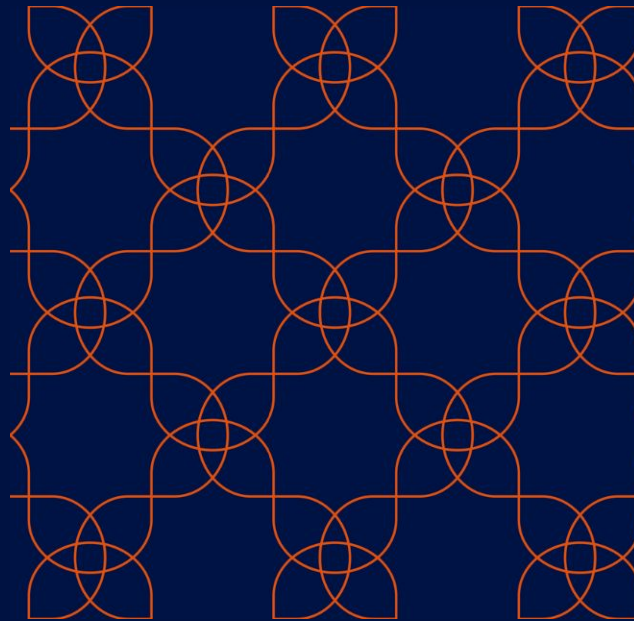


**THE
CLEMENT
ROOMS**



BY **SPACEMADE** .CO

SPACEMADE

For meaningful connections.

At Spacemade, we believe that real-world connections shape our personal and professional journeys in ways unmatched by digital networks and interfaces.

This is why at each of our locations, we foster environments that make your office days feel purposeful and engaging; where mere interactions turn into meaningful connections and opportunities to learn, grow, and succeed together.

Whether you need a private office, a coworking space, or a meeting room for the day, you'll be welcomed into a vibrant community of like-minded professionals and businesses, all thriving in the company of others.

Jonny & Dan

Spacemade Co-Founders





Welcome to *The Clement Rooms*

A collection of beautifully appointed, recently renovated private offices in the heart of London.

With views of iconic London landmarks, these beautifully designed, modern private offices are perfect for any business that wants a hub in the heart of the capital.

Located on The Strand, directly opposite the Royal Courts of Justice you're just moments away from some of the city's top bars, restaurants and theatres, well connected between Holborn, Charing Cross & Temple tube stations and just a short walk to the London Thameslink.



The Space

Our beautifully designed private offices range from 2 to 20 people across four floors. All with natural daylight and fully customizable, there's no shortage of amenities, from focus booths and breakout rooms to showers and bike racks with weekly & monthly member events too.

Amenities

- 24/7 Access
- Community Manager on site: Monday – Friday 8:30AM – 5:30PM
- Dog Friendly
- Free Fast Wifi
- Fully Kitted Kitchen, with Artisanal Caravan Coffee, Brew Tea and Fresh Fruits
- Showers
- Meeting Rooms
- Focus Booths
- Member Events
- Breakout and Collaboration Areas



SPACEMADE



BY SPACEMADE .CO

Private Office

From £475* per desk



First Floor



Key

- Office
- Meeting Room
- Kitchen/Tea Point

*All prices listed are priced per month and exclusive of VAT. Based on a 12-month contract.



BY SPACEMADE .CO

Private Office

From £475* per desk



Second Floor

Key

- Office
- Meeting Room
- Kitchen/Tea Point

*All prices listed are priced per month and exclusive of VAT. Based on a 12-month contract.



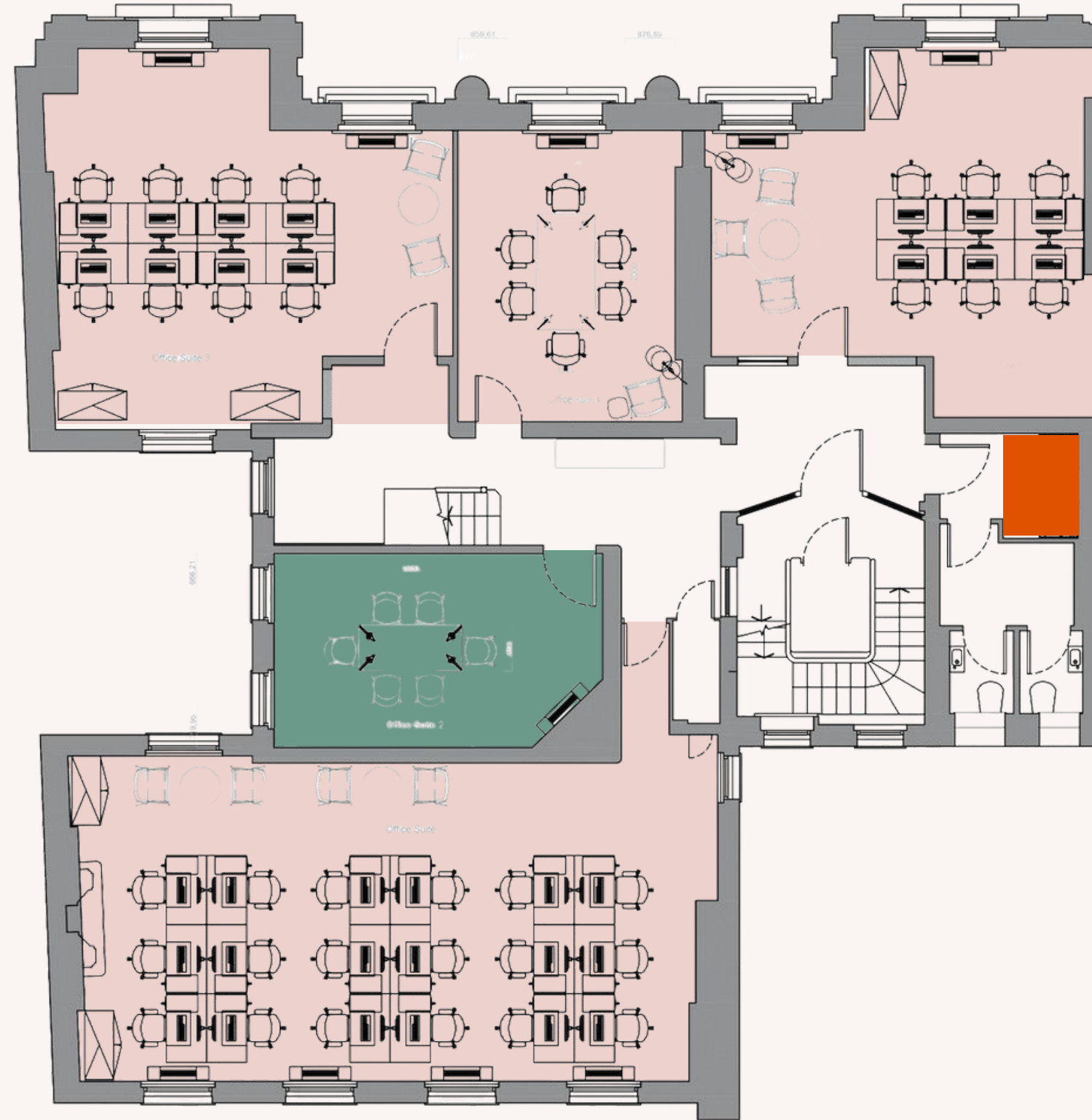
BY SPACEMADE .CO

Private Office

From £475* per desk



Third Floor



Key

- Office
- Meeting Room
- Kitchen/Tea Point

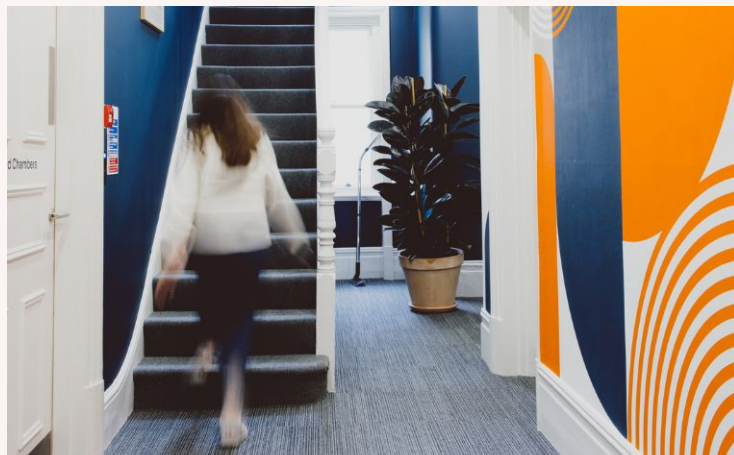
*All prices listed are priced per month and exclusive of VAT. Based on a 12-month contract.



BY SPACEMADE .CO

Private Office

From £475* per desk



Fourth Floor



Key

- Office
- Meeting Room
- Kitchen/Tea Point

*All prices listed are priced per month and exclusive of VAT. Based on a 12-month contract.

Meeting Rooms

Searching for the ideal space to host your team's brainstorming sessions or client presentations? Look no further! Our three fully-equipped meeting rooms cater to teams of up to ten people, ensuring your needs are met. Beyond our stylish and functional rooms, indulge in our amenities, including a fully-equipped kitchen and unlimited Caravan Coffee. Need catering? Just ask! With super-fast WiFi, large screens, and Zoom room tech, your meetings will be seamless. Book by the hour and boost your team's productivity!



The Bells

£40p/h

Members enjoy a 1/3 saving on all bookings

Meeting room for up to 6 people



Oranges & Lemons

£50p/h

Members enjoy a 1/3 saving on all bookings

Meeting room for up to 8 people



The Old Chambers

£50p/h

Members enjoy a 1/3 saving on all bookings

Meeting room for up to 10 people

[>> CLICK HERE TO BOOK A MEETING ROOM](#)

In the Neighbourhood

With the iconic bars, restaurants and theatres of Aldwych and Covent Garden on the doorstep and the River Thames just a few minutes' walk, you'll be spoiled for choice when you need a break from your working day. Linking London's political centre, Westminster, with the City, the capital's trade and banking hub, The Strand is a bustling thoroughfare packed full of shops, cafés, bars, restaurants and theatres.



>> [CLICK HERE TO READ OUR NEIGHBORHOOD GUIDE](#)



Drink in One of London's Oldest Pubs

A favourite watering-hole of Charles Dickens, Dr Johnson and Samuel Pepys, Ye Olde Cock Tavern is full of history and character, dating all the way back to 1549.

click to find out more!



Get Your History Fix

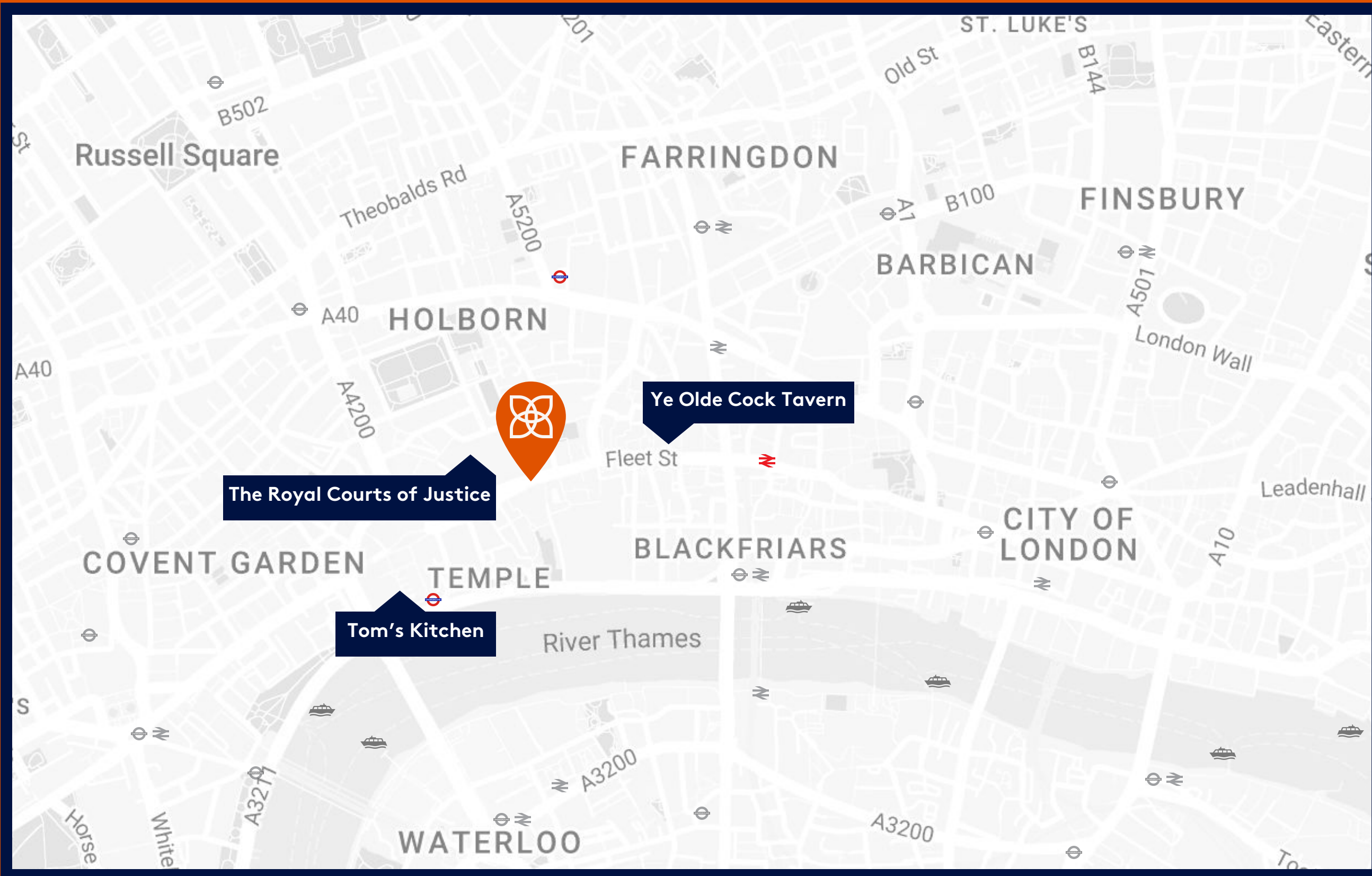
If history is your thing, you'll be spoilt for choice. The Clement Rooms is surrounded by iconic buildings and landmarks. Take a break from your busy day and visit Temple Bar, the only surviving gateway to the City of London, St Bride's Church Crypt Museum or the home of Dr Samuel Johnson, the father of the modern dictionary.



The Views Alone Will Win You Over

Situated on the ground floor of the iconic Somerset House building, Tom's Kitchen serves comfort food favourites. With views across the Thames, the terrace has become one of London's most popular hotspots.





Illustrative representation of area.

Ye Olde Cock Tavern

Dating from 1549 this pub has hosted Pepys, Dickens and Dr Johnson.

The Royal Courts of Justice

A court building in Westminster that houses the High Court and Court of Appeal of England and Wales.

Tom's Kitchen

Fashionable, upscale riverside restaurant & bar serving Punjabi & South Indian cuisine.

The Clement Rooms by Spacemade

217 Strand, Temple London, WC2R 1AT
///beats.skills.extra

Easily Accessible



Temple
(5 min walk)



City Thameslink
(8 min walk)



Holborn
(15 mins walk)



**THE
CLEMENT
ROOMS**

BY **SPACEMADE** .CO



Certified



Corporation

T: 020 8064 1715

E: theclementrooms@spacemade.co

[>> CLICK HERE FOR MORE INFO](#)



Kane Silver
Sales Manager

T: 07519 996 845

E: kane@spacemade.co