

# FOR LEASE

**B** BALTIMORE COUNTY, MD

# MCDONOUGH CROSSROADS

10 CROSSROADS DRIVE AND 5 PARK CENTER COURT | OWINGS MILLS, MD 21117



## PROPERTY HIGHLIGHTS:

- ▶ CLASS A OFFICE SPACE
- ▶ PREMIERE OFFICE/MEDICAL PARK
- ▶ 1 MILE FROM I-695
- ▶ INDIVIDUAL HVAC SYSTEM
- ▶ FREE PARKING
- ▶ CENTRALLY LOCATED IN REISTERSTOWN ROAD CORRIDOR
- ▶ LINWOODS LOCATED IN ADJACENT BUILDING
- ▶ TWO MILES FROM METRO CENTRE AT OWINGS MILLS

**DAVID S. BROWN**  
ENTERPRISES, L.T.D.

**KEVIN KEANE | SVP, OFFICE LEASING**  
410.581.2519 | KEVIN@DAVIDSBROWN.COM

**BRENT MANGUM | VP, OFFICE LEASING**  
410.581.2518 | BRENT@DAVIDSBROWN.COM

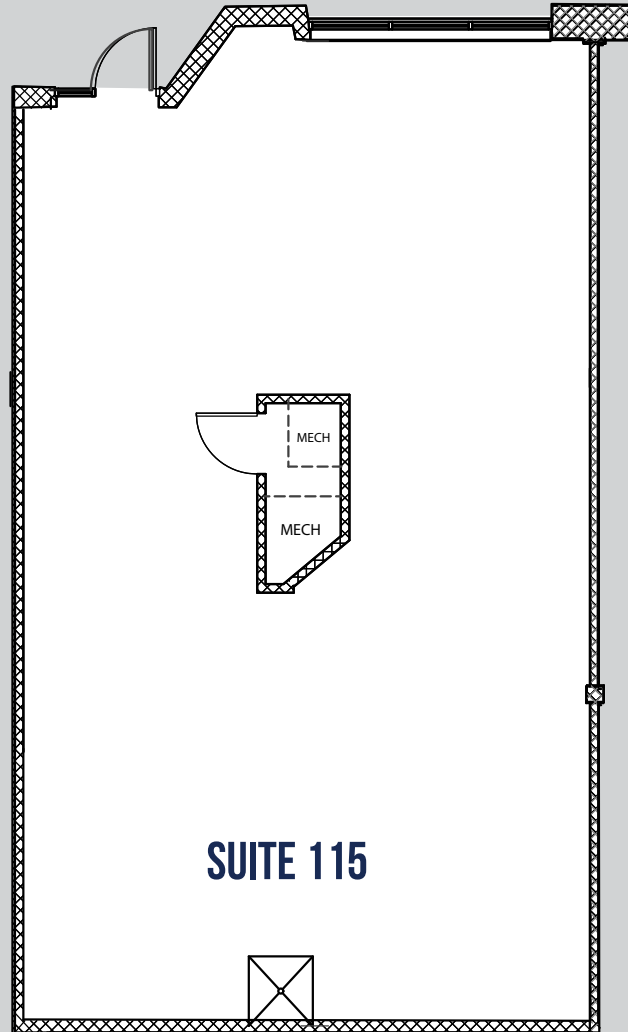
**NOAH ADLER | LEASING ASSOCIATE**  
410.581.2510 | NADLER@DAVIDSBROWN.COM

# FOR LEASE

BALTIMORE COUNTY, MD

# MCDONOUGH CROSSROADS

10 CROSSROADS DRIVE AND 5 PARK CENTER COURT | OWINGS MILLS, MD 21117



AVAILABLE

▶ SUITE 115: 1,331 SF

10 CROSSROADS DRIVE

# FOR LEASE

BALTIMORE COUNTY, MD

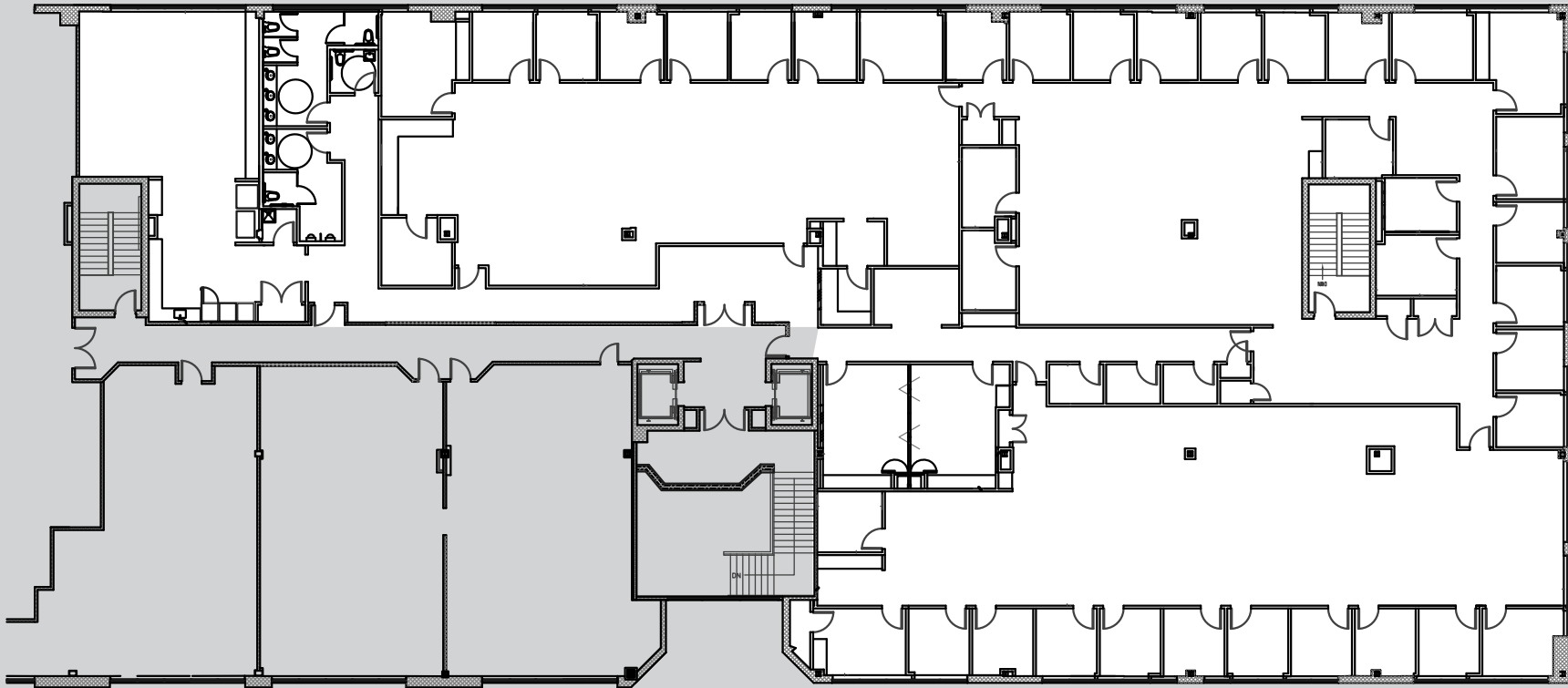
# MCDONOUGH CROSSROADS

10 CROSSROADS DRIVE AND 5 PARK CENTER COURT | OWINGS MILLS, MD 21117

AVAILABLE

► SUITE 204-208: 16,081 SF

10 CROSSROADS DRIVE



**DAVID S. BROWN**  
ENTERPRISES, LTD.

**KEVIN KEANE | SVP, OFFICE LEASING**  
410.581.2519 | KEVIN@DAVIDSBROWN.COM

**BRENT MANGUM | VP, OFFICE LEASING**  
410.581.2518 | BRENT@DAVIDSBROWN.COM

**NOAH ADLER | LEASING ASSOCIATE**  
410.581.2510 | NADLER@DAVIDSBROWN.COM

DAVID S. BROWN ENTERPRISES | 100 PAINTERS MILL ROAD, OWINGS MILLS, MD 21117 | 410.581.2520 | WWW.DAVIDSBROWN.COM | 

# FOR LEASE

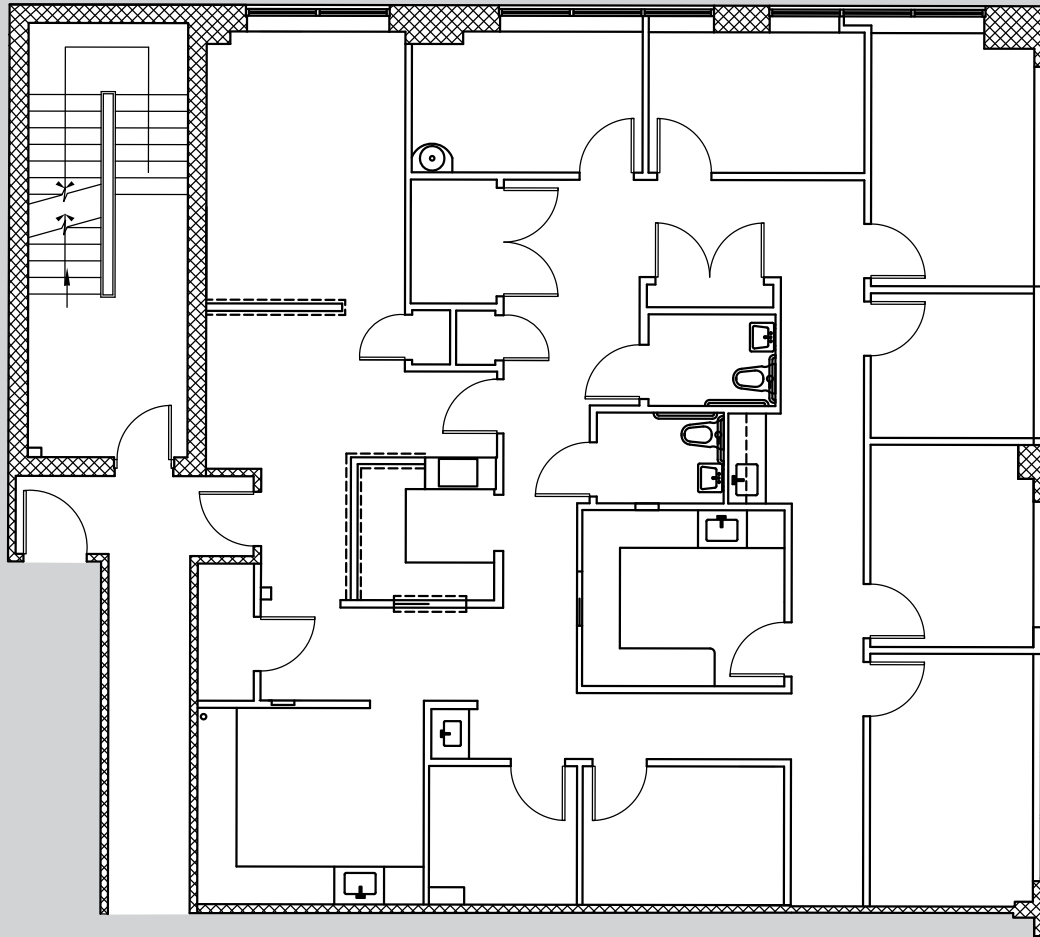
**B** BALTIMORE COUNTY, MD

# MCDONOUGH CROSSROADS

10 CROSSROADS DRIVE AND 5 PARK CENTER COURT | OWINGS MILLS, MD 21117

AVAILABLE

▶ SUITE 203: 2,370 SF



5 PARK CENTER COURT

**VIRTUAL TOUR** ▶

# MCDONOGH CROSSROADS

10 CROSSROADS DRIVE AND 5 PARK CENTER COURT | OWINGS MILLS, MD 21117

# MAP



## NEARBY AMENITIES:

- Lenny's Deli
- Ruth's Chris
- Linwood's
- Wegmans
- Panera