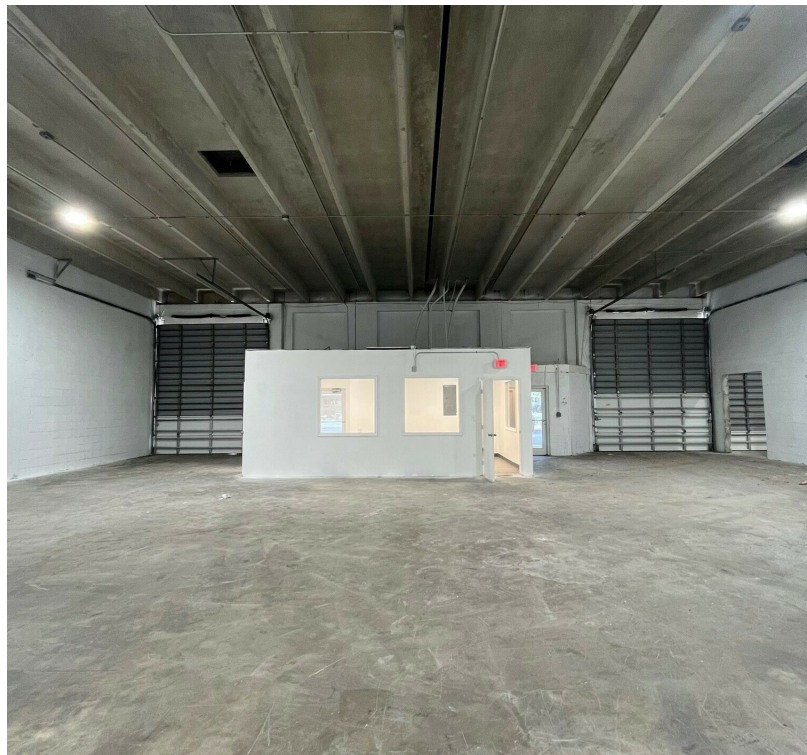


FOR LEASE

# INDUSTRIAL PARK LAUDERHILL

3700-3798 NW 16TH STREET, LAUDERHILL, FL 33311

3786-3788 NW 16TH STREET



## SPACE HIGHLIGHTS

- 3,060 SF newly renovated multi-bay warehouse
- Fully air-conditioned 329 SF office
- 2 Front Grade level 12' x 14' overhead doors
- 18' clear ceiling height in warehouse
- LED lighting
- Hurricane impact doors
- 3 Phase Electric
- Ample parking
- Fronts NW 38th Street



### ANGIE WEAVER

Lauderdale Lakes and Lauderhill Manager  
Direct: 954.485.9200 | Cell: 917.645.2339  
angie@levyrai.com

### HALEY PRESSER

Property Manager / Sales Associate  
Direct: 954.485.9200 | Cell: 954.254.5396  
Haley@levyrai.com

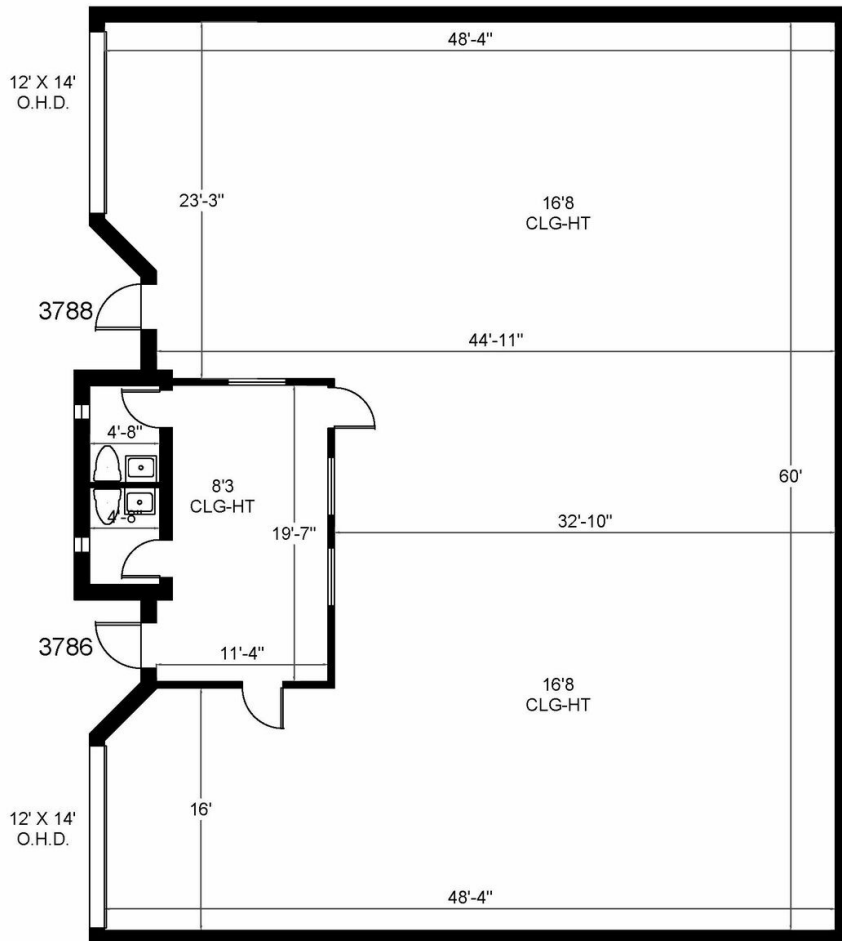


# INDUSTRIAL PARK LAUDERHILL

3700-3798 NW 16TH STREET, LAUDERHILL, FL 33311

## INDUSTRIAL PARK LAUDERHILL

3786-3788 NW 16<sup>th</sup> Street | Lauderhill, FL 33311



Office - 329 Sq. Ft.

3,060 Rentable Sq. Ft.  
[www.LevyRealtyAdvisors.com](http://www.LevyRealtyAdvisors.com)

### ANGIE WEAVER

Lauderdale Lakes and Lauderhill Manager  
Direct: 954.485.9200 | Cell: 917.645.2339  
angie@levyrai.com

### HALEY PRESSER

Property Manager / Sales Associate  
Direct: 954.485.9200 | Cell: 954.254.5396  
Haley@levyrai.com

