

GROUND LEASE

HIGHLY VISIBLE RETAIL BUILDING
2799 Main Street, Glastonbury, Connecticut 06033

“3,600 SF existing building for lease or redevelopment on .5 acres”



FOR MORE INFORMATION:

David Dumeer

(860) 508-2266

ddumeer@gomanyork.com



Goman+York Property Advisors

111 Founders Plaza

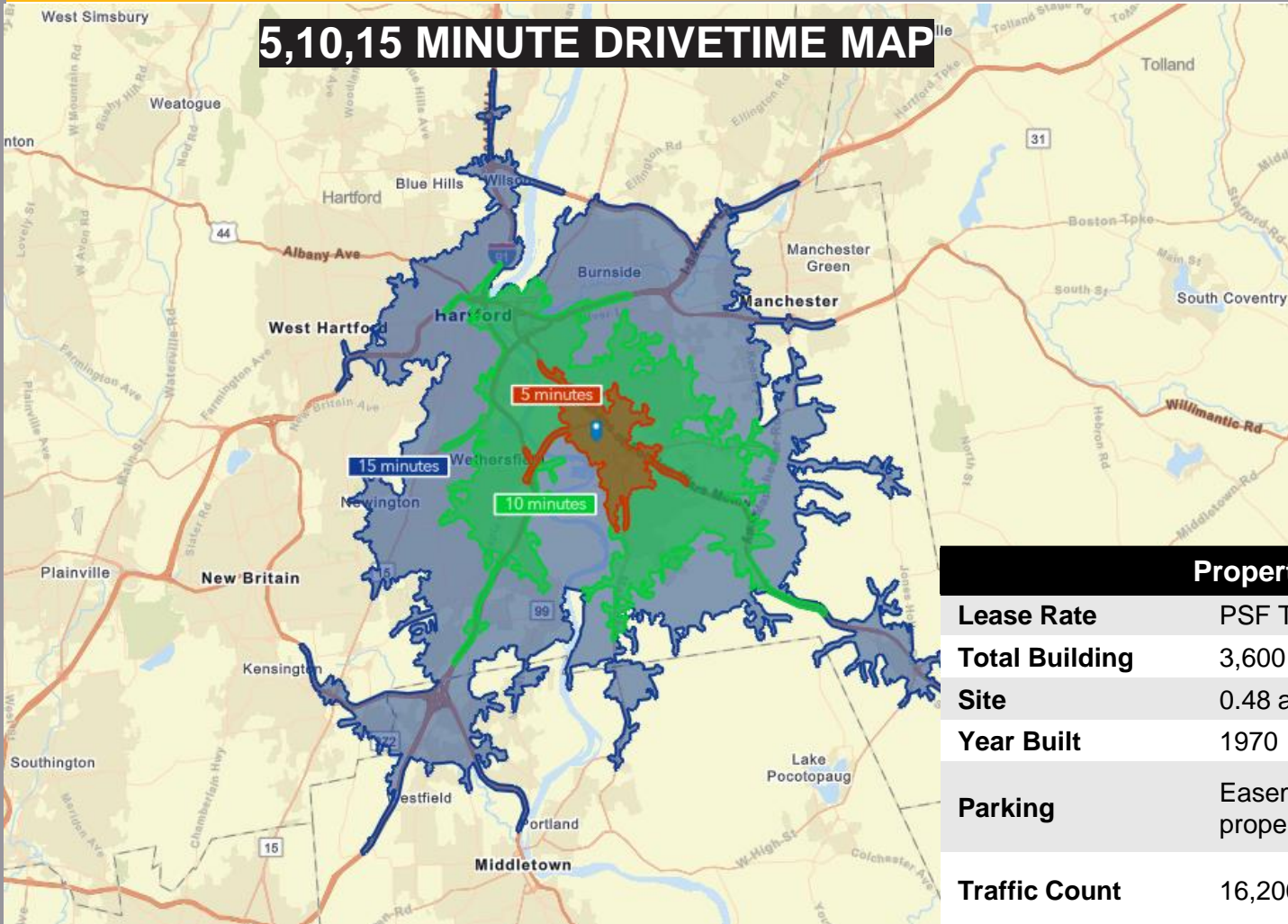
East Hartford, CT 06108

www.gomanyork.com

PROPERTY DATA

For Lease: 2799 Main Street, Glastonbury, CT

5,10,15 MINUTE DRIVETIME MAP



DEMOGRAPHICS

POPULATION

- 1 Mile: 4,985
- 3 Mile: 45,828
- 5 Mile: 179,656

HOUSEHOLDS

- 1 Mile: 2,520
- 3 Mile: 18,947
- 5 Mile: 69,154

AVG. HOUSEHOLD \$

- 1 Mile: \$82,622
- 3 Mile: \$97,916
- 5 Mile: \$79,942

Property Features

Lease Rate	PSF TBD or Ground Lease
Total Building	3,600 SF
Site	0.48 acres
Year Built	1970
Parking	Easements in place with abutting property owner for parking & access
Traffic Count	16,200 ADT on Main Street

FOR MORE INFORMATION:

David Dumeer
 (860) 508-2266
ddumeer@gomanyork.com



Goman+York Property Advisors
 111 Founders Plaza
 East Hartford, CT 06108
www.gomanyork.com

LOCAL TRADE AREA

For Lease: 2799 Main Street, Glastonbury, CT



FOR MORE INFORMATION:

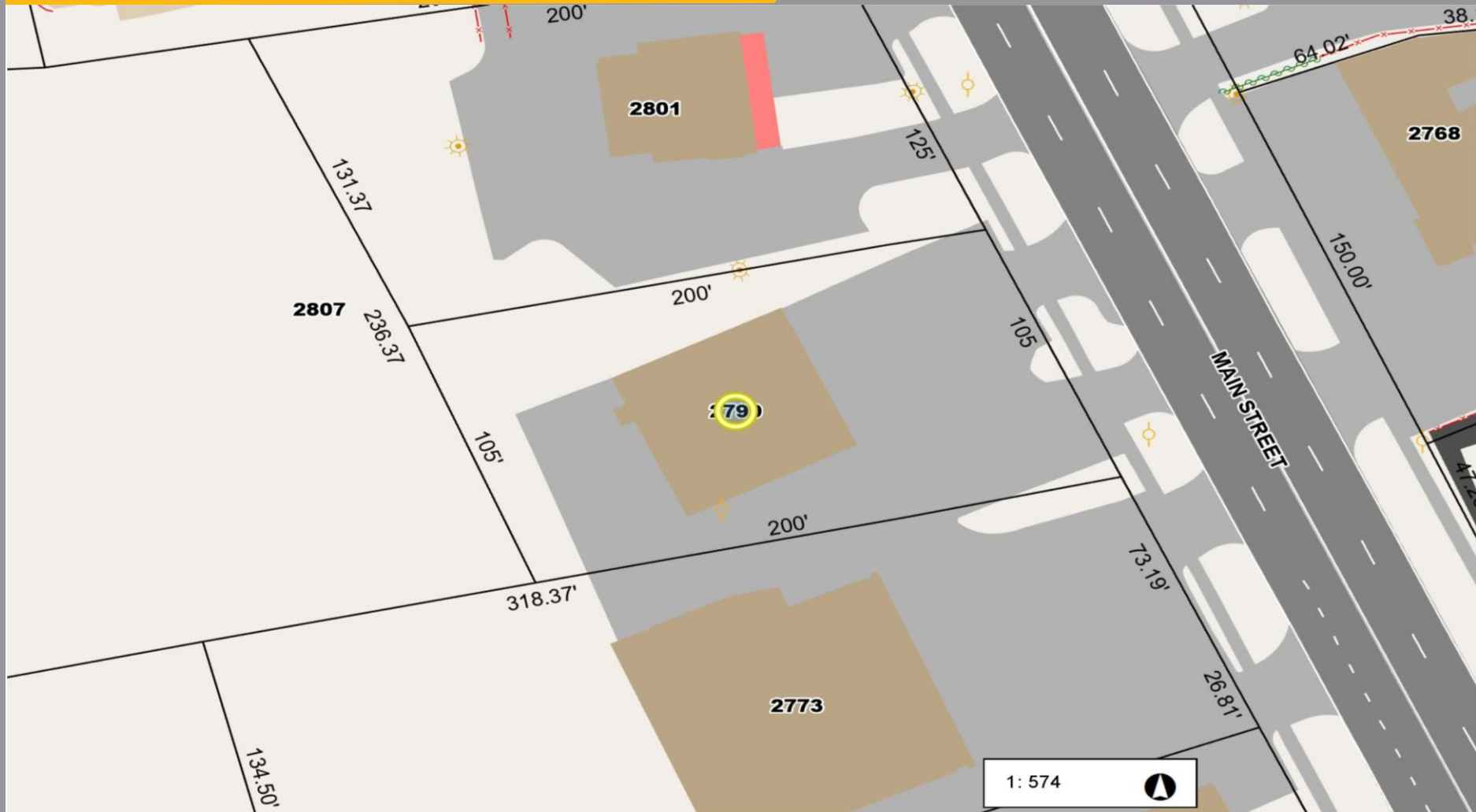
David Dumeer
(860) 508-2266
ddumeer@gomanyork.com



Goman+York Property Advisors
111 Founders Plaza
East Hartford, CT 06108
www.gomanyork.com

SITE PLAN

For Lease: 2799 Main Street, Glastonbury, CT



FOR MORE INFORMATION:

David Dumeer

(860) 508-2266

ddumeer@gomanyork.com



PROPERTY ADVISORS

Goman+York Property Advisors

111 Founders Plaza
East Hartford, CT 06108

www.gomanyork.com

IMMEDIATE AREA

For Lease: 2799 Main Street, Glastonbury, CT



FOR MORE INFORMATION:

David Dumeer
(860) 508-2266
ddumeer@gomanyork.com



Goman+York Property Advisors
111 Founders Plaza
East Hartford, CT 06108
www.gomanyork.com