

# OFFICE / FLEX SPACE FOR LEASE

2121 2<sup>ND</sup> ST (SUITE A-106)

Davis, CA 95618

Zoned: PD 2-84

Clean, modern flex/office space

Large warehouse area

Available now!

Modern flex unit. Nice build out. Office portion includes: Reception, conference room, storage room, two private offices, closet and two single-occupant restrooms.

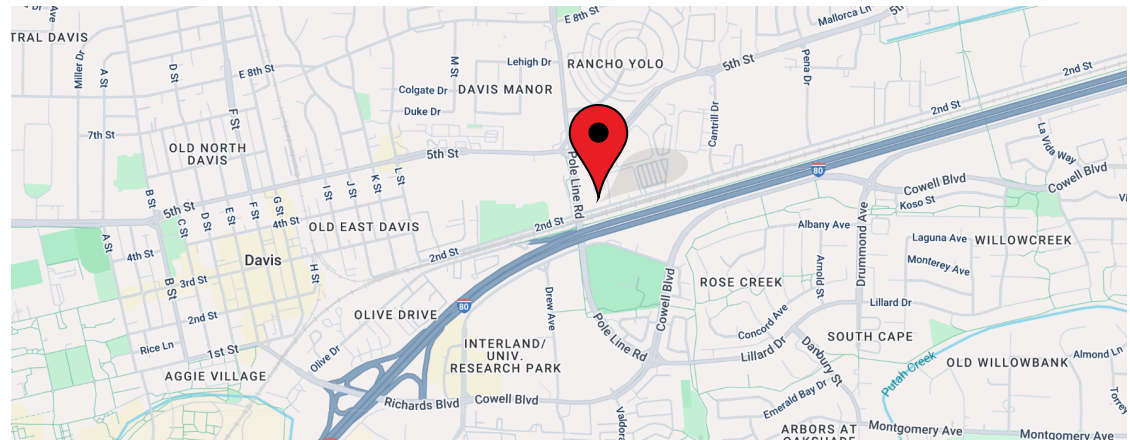
## ANTONIA GIAOURIS

Executive Director of Leasing

Antonia.Giaouris@Clire.com | (916) 457 - 9900 x 6

**clire.com**

Information herein deemed reliable but not guaranteed. References to any values are approximate. Floor Plans and Site Plans are not to scale. Lessee should conduct independent verification of all matters deemed to be material. Listed rate may not include certain utilities, building services and property expenses. All approvals, permits, and compliance with applicable codes are the responsibility of the lessee.



± 2,541 SF  
Rentable

NNN lease  
Call for details



**FOR LEASE**

# 2121 2<sup>ND</sup> ST (SUITE A-106)

Davis, CA 95618



Davis Commerce Park, a dynamic community designed for innovation, productivity, and growth. Perfectly positioned to meet the diverse needs of modern enterprises, our park is home to a vibrant mix of lab, office, flex, gym, cannabis, science, and research tenants. Easily accessible by car, bus, walking, and biking, Davis Commerce Park is situated near numerous bike and walking paths. In addition to its convenient location, Davis Commerce Park is surrounded by a variety of restaurants, making it easy for employers, employees, and clients to grab a quick bite, enjoy lunch, or host a meeting. This center comprises three commercial buildings and offers flexible space to accommodate both small and large businesses. Discover how Davis Commerce Park can be the catalyst for your business success!

**clire.com**

Information herein deemed reliable but not guaranteed. References to any values are approximate. Floor Plans and Site Plans are not to scale. Lessee should conduct independent verification of all matters deemed to be material. Listed rate may not include certain utilities, building services and property expenses. All approvals, permits, and compliance with applicable codes are the responsibility of the lessee.

## PROPERTY HIGHLIGHTS

- Zoned: PD - Planned Development
  - PD #2-84 Master CUP approval
- Building size: 62,369 SF
- Lot size: ± 4.37 acres
- Strong street visibility
- Desirable location
- Easy parking
- Minutes from I-80
- Concrete tilt-up buildings
- Fiber optic internet access
- Natural gas
- Built in 1985

**ANTONIA GIAOURIS**

Executive Director of Leasing

[Antonia.Giaouris@Clire.com](mailto:Antonia.Giaouris@Clire.com)

(916) 457 - 9900 x 6



**FOR LEASE**

**2121 2<sup>ND</sup> ST (SUITE A-106)**

Davis, CA 95618



## SUITE HIGHLIGHTS

- Large warehouse space
- 2 private offices
- Secure storage area
- Conference room
- Reception area
- Roll up door
- Half T-bar / Half High Bay
- Alarm / security system
- 2 single occupant ADA restrooms
- Central HVAC
- Lease term: 5 years

**ANTONIA GIAOURIS**

Executive Director of Leasing

[Antonia.Giaouris@Clire.com](mailto:Antonia.Giaouris@Clire.com)

(916) 457 - 9900 x 6

**clire.com**

Information herein deemed reliable but not guaranteed. References to any values are approximate. Floor Plans and Site Plans are not to scale. Lessee should conduct independent verification of all matters deemed to be material. Listed rate may not include certain utilities, building services and property expenses. All approvals, permits, and compliance with applicable codes are the responsibility of the lessee.

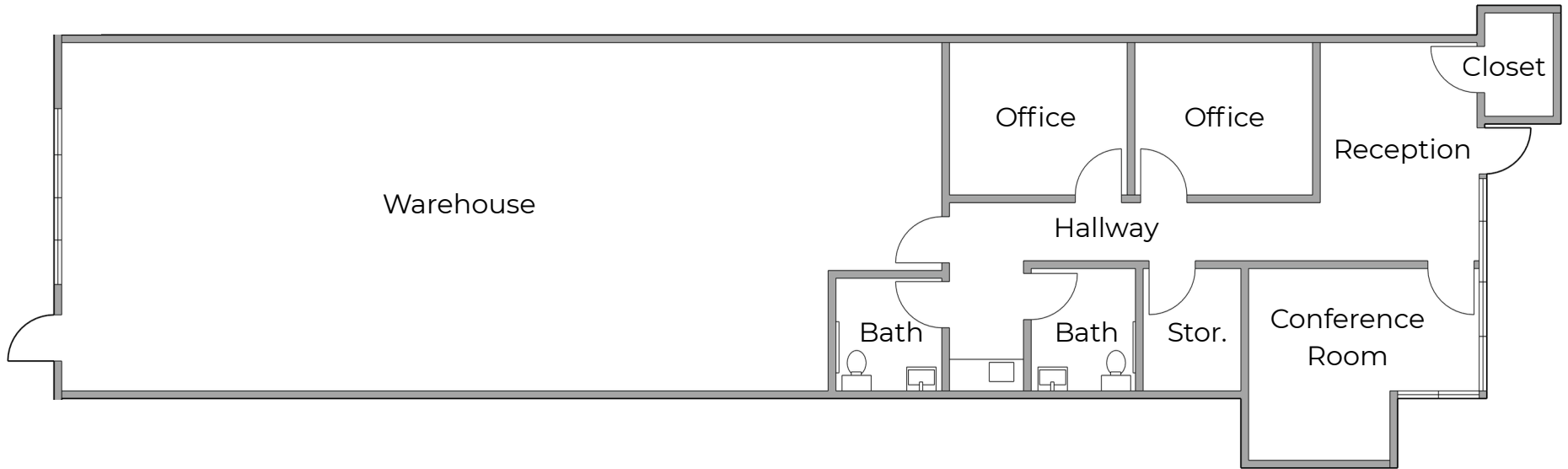


**FOR LEASE**

**2121 2<sup>ND</sup> ST (SUITE A-106)**

Davis, CA 95618

# FLOOR PLAN



**clire.com**

Information herein deemed reliable but not guaranteed. References to any values are approximate. Floor Plans and Site Plans are not to scale. Lessee should conduct independent verification of all matters deemed to be material. Listed rate may not include certain utilities, building services and property expenses. All approvals, permits, and compliance with applicable codes are the responsibility of the lessee.



**FOR LEASE**

# 2121 2<sup>ND</sup> ST (SUITE A-106)

Davis, CA 95618

## SITE PLAN



**clire.com**

Information herein deemed reliable but not guaranteed. References to any values are approximate. Floor Plans and Site Plans are not to scale. Lessee should conduct independent verification of all matters deemed to be material. Listed rate may not include certain utilities, building services and property expenses. All approvals, permits, and compliance with applicable codes are the responsibility of the lessee.



# FOR LEASE

## 2121 2<sup>ND</sup> ST (SUITE A-106)

Davis, CA 95618

# LOCATION HIGHLIGHTS



1. Bank of America  
1.3 miles away
2. Wells Fargo Bank  
1.2 miles
3. Chase Bank  
1.3 miles away
4. Travis Credit Union  
1.4 miles away
5. US Bank  
1.2 miles away



1. Davis Bike Loop  
1.7 miles away
2. Putah Creek Riparian Reserve  
1.6 miles away
3. Walnut Park  
0.5 miles away
4. Brooks Road Trailhead  
3.7 miles
5. UC Davis Arboretum and Public Garden  
1.9 miles away
6. Northstar Park  
2.2 miles away
7. Central Park  
1.1 miles away
8. Yolo Bypass Wildlife Area  
2.9 miles away
9. Sandy Motley Park  
1.4 miles away
10. Slide Hill Park  
1.0 miles away



1. Tres Hermanas  
0.8 miles away
2. Dos Coyotes Border Case  
0.5 miles away
3. Ike's Love & Sandwiches  
0.9 miles away
4. Mr. Pickle's Sandwich shop  
0.5 miles away
5. Black Bear Diner  
1.2 miles away
6. In-N-Out Burger  
0.9 miles away
7. Raising Canes's Chicken Fingers  
1.0 miles away
8. Blaze Pizza  
0.9 miles away
9. Nick the Greek  
1.0 miles away
10. Sam's Mediterranean Cuisine  
1.2 miles away



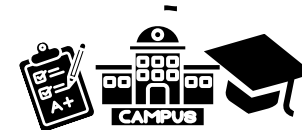
1. Hyatt House Davis  
0.3 miles away
2. Hyatt Place UC Davis  
1.5 miles away
3. University Park Inn and Suites  
1.0 miles away
4. Holiday Inn Express & Suites Davis  
0.6 miles away



1. Oakland International Airport  
80.1 miles away
2. Sacramento International Airport  
20.6 miles away
3. San Francisco International Airport  
88.3 miles away



1. Sutter Davis Hospital  
4.1 miles away
2. UC Davis Medical Center  
2.6 miles away
3. Kaiser Permanente Davis Offices  
2.0 miles away



1. UC Davis  
1.7 miles away
2. University of Southern California  
398 miles away
3. UC Berkeley  
70.8 miles away
4. Stanford University  
111 miles away
5. California Institute of Technology  
398 miles away

**clire.com**

Information herein deemed reliable but not guaranteed. References to any values are approximate. Floor Plans and Site Plans are not to scale. Lessee should conduct independent verification of all matters deemed to be material. Listed rate may not include certain utilities, building services and property expenses. All approvals, permits, and compliance with applicable codes are the responsibility of the lessee.



# OTHER AVAILABLE PROPERTIES

Sacramento CA Region

ANTONIA GIAOURIS

Executive Director of Leasing

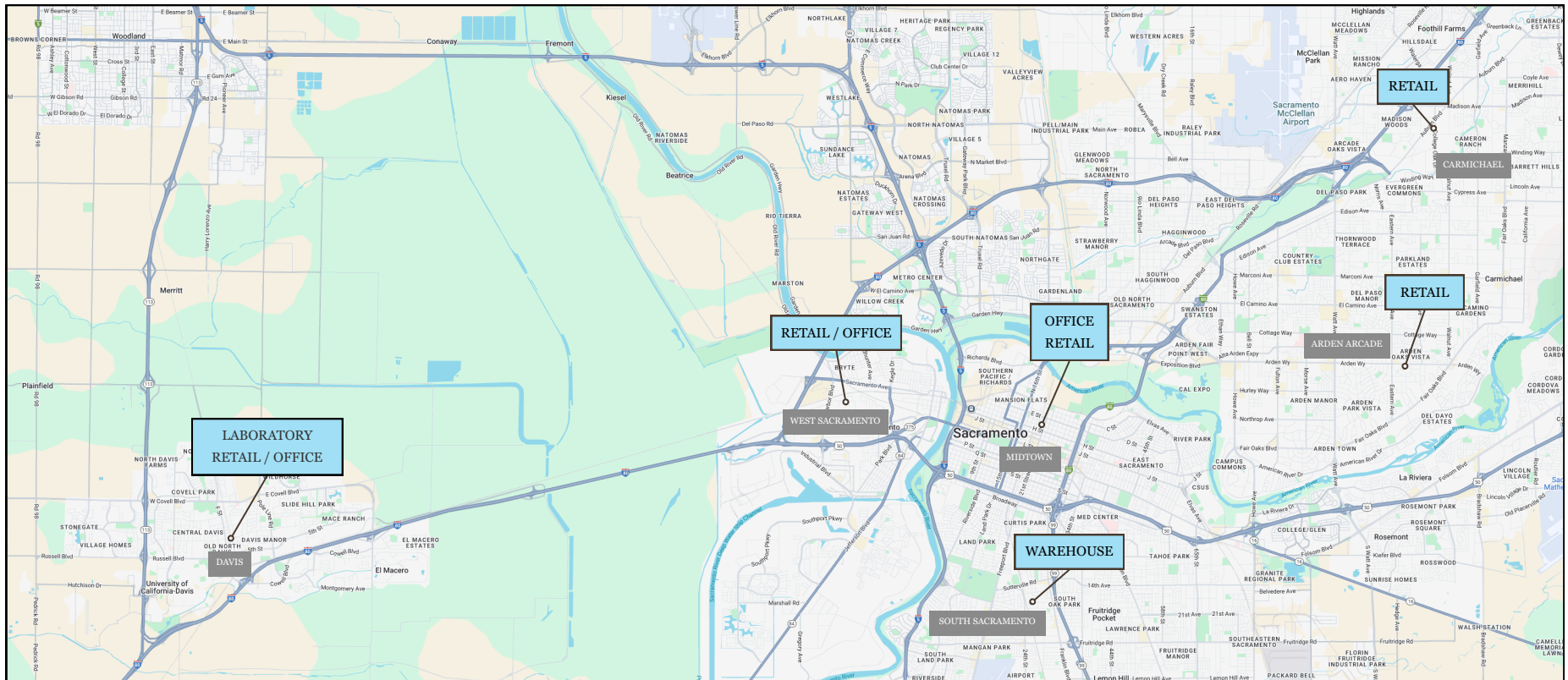
Antonia.Giaouris@Clire.com | (916) 457 - 9900 x 6

[View All Retail](#)

[View All Offices](#)

[View All Warehouses](#)

[View All Laboratories](#)



[View All Available Properties](#)

**clire.com**

Information herein deemed reliable but not guaranteed. References to any values are approximate. Floor Plans and Site Plans are not to scale. Lessee should conduct independent verification of all matters deemed to be material. Listed rate may not include certain utilities, building services and property expenses. All approvals, permits, and compliance with applicable codes are the responsibility of the lessee.





## OFFICE / FLEX SPACE FOR LEASE

Schedule a tour today!

DAVIS COMMERCE PARK  
2121 2<sup>nd</sup> St. Suite A-106  
Davis , CA 95691

Not quite what you're looking for? Give us a call —  
we may have something else that fits your needs.

### ANTONIA GIAOURIS

Executive Director of Leasing

[Antonia.Giaouris@Clire.com](mailto:Antonia.Giaouris@Clire.com)

(916) 457 - 9900 x 6

**clire.com**

Information herein deemed reliable but not guaranteed. References to any values are approximate. Floor Plans and Site Plans are not to scale. Lessee should conduct independent verification of all matters deemed to be material. Listed rate may not include certain utilities, building services and property expenses. All approvals, permits, and compliance with applicable codes are the responsibility of the lessee.

