

FOR LEASE

5001 West Village Green Drive
Midlothian, VA 23112

Brandermill Professional Center
Office & Medical Spaces
1,250 & 2,500 SF Suite



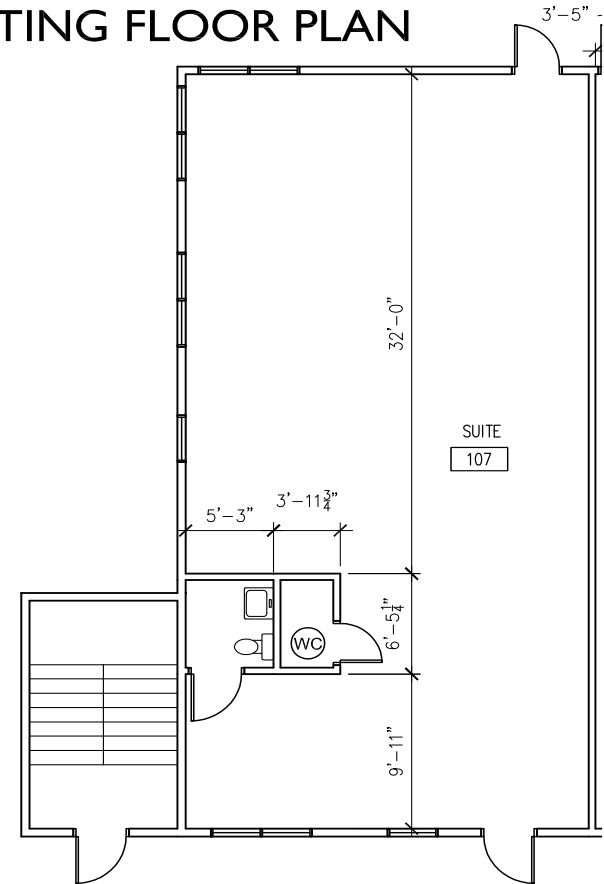
Connor Williams
(804) 744-9290 | connor@ccrealtyllc.com

Chesterfield Commercial Realty
5001 West Village Green Drive, Suite 203 | Midlothian, VA 23112

Property Details

- Suites 100 & 107 Currently Available
- 1,250 SF Suite & 2,500 SF Suite
- \$14.00 - \$17.25 / SF NNN
- Individual Restrooms, HVAC, & Electric Meters for Each Suite
- New Roof & Newly Painted Building
- Front & Rear Access
- C-2 Neighborhood Business Zoning
- Close access to I-288 & Powhite Parkway via Hull Street Road & Old Hundred Road

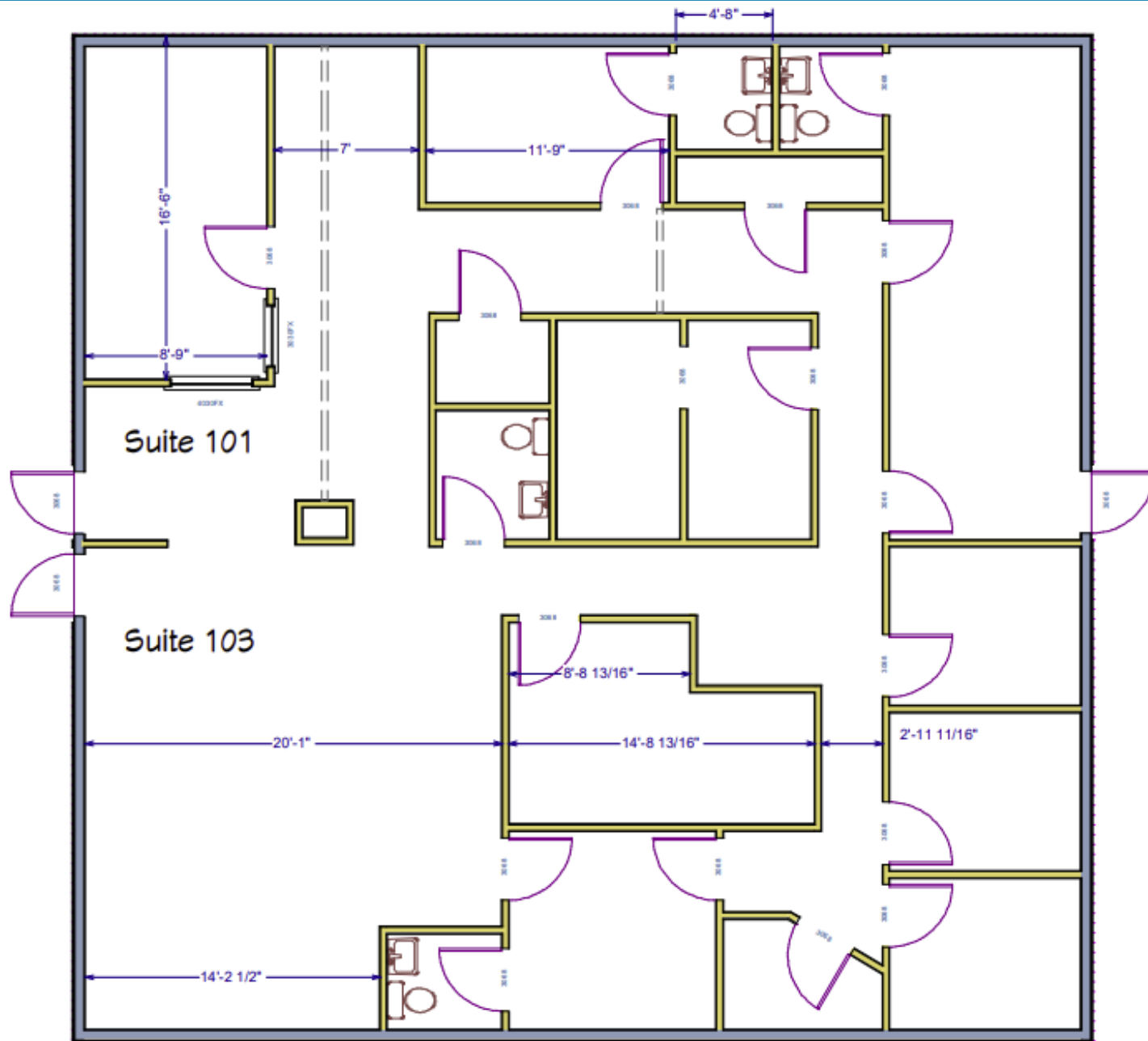
EXISTING FLOOR PLAN



Demographics

	<i>1 Mile</i>	<i>3 Miles</i>	<i>5 Miles</i>
<i>Total Population</i>	<i>5,305</i>	<i>49,402</i>	<i>113,983</i>
<i>Average Household Income</i>	<i>\$110,315</i>	<i>\$107,671</i>	<i>\$118,375</i>

Suite 100 Floor Plan



Aerial View

