

55 Goswell Road

Farringdon, EC1

nuveen

55 Goswell Road

London, EC1

About the Building

55 Goswell Road provides 4 warehouse style units ranging from 8-12 desks.

Each space is fully fitted, with further opportunity to personalise to your brand – making it easier than ever to move your office to Goswell Road today.



PERSONALISATION
OPTIONS



FULLY FURNISHED



PRIVATE WCS



HEATING AND
COOLING SYSTEM



COMMUNAL SHOWER
FACILITIES



KITCHEN



Available Units

Unit	Sq ft	Desks	Price Per Month
1st South	601	8	£9,000
2nd South	646	8	£9,700
2nd North	897	12	£13,500
3rd South	624	8	£9,350





Peldon Rose



Peldon Rose® 3D Visual for illustrative purposes only

1st Floor South

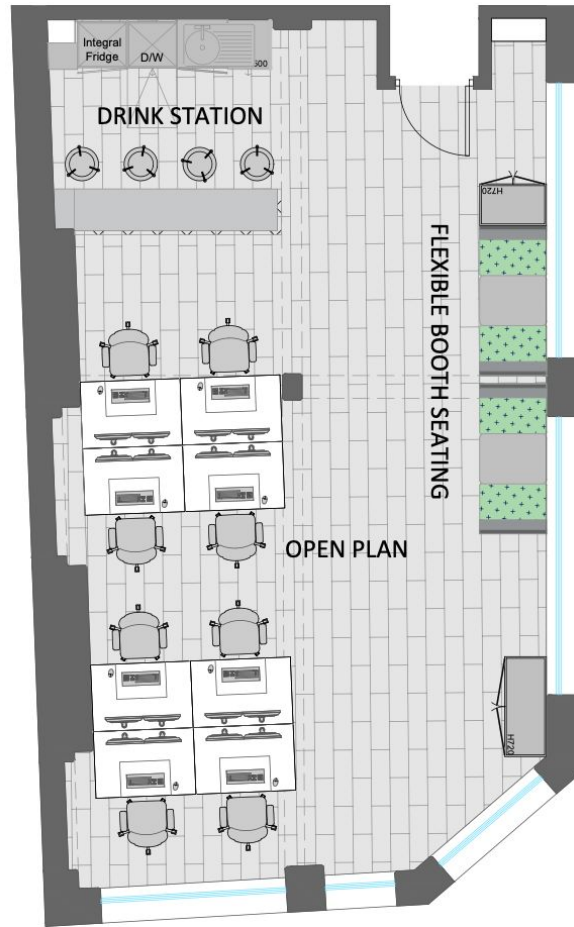
Price per month £9,000

Size 601 sf

Virtual Tour ▶

nuveen | 55 Goswell Road
London, EC1

0 0.4 1 2m
SCALE 1:20



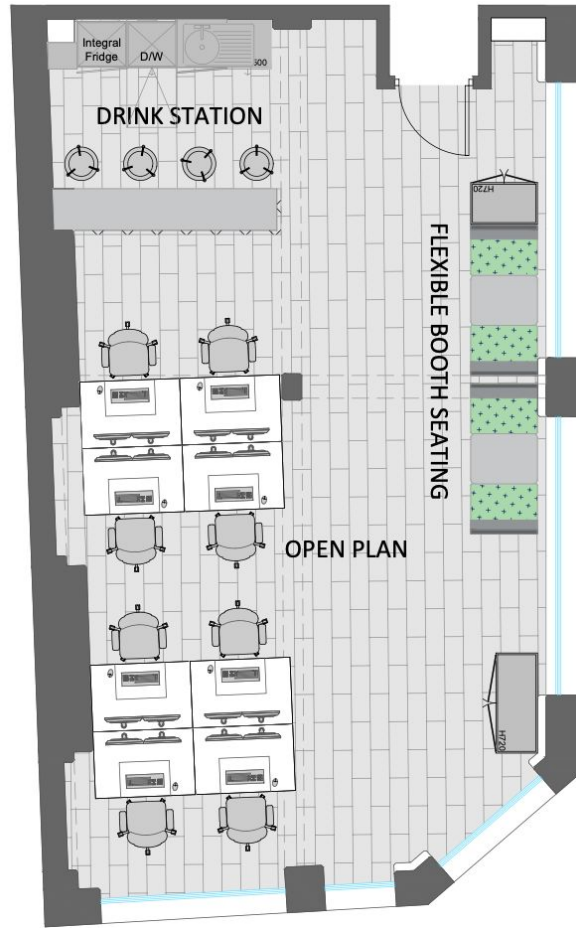
2nd Floor South

Price per month £9,700

Size 624 sf

[Virtual Tour](#) ▶

nuveen | 55 Goswell Road
London, EC1



2nd Floor North

Price per month £13,500

Size 897 sq ft



[Virtual Tour](#) ▶

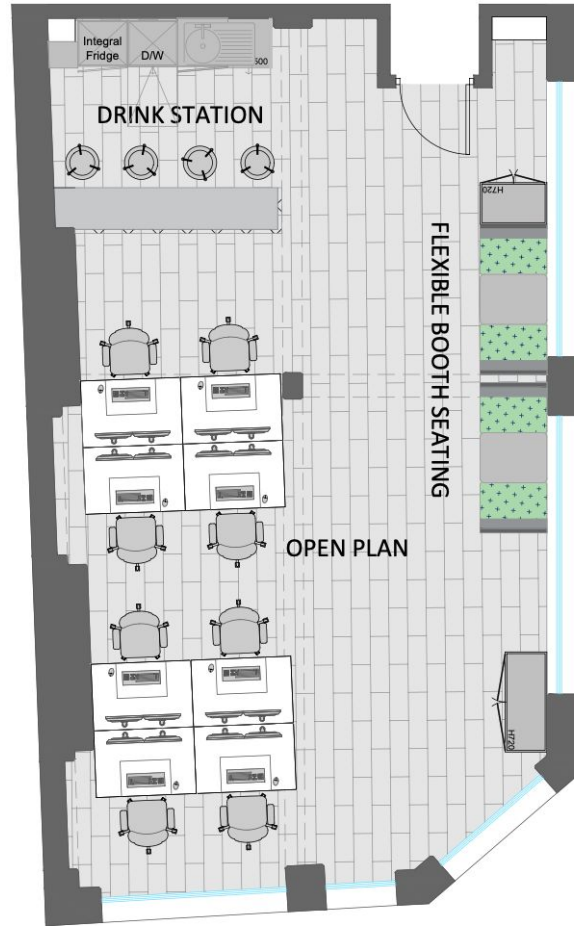
3rd Floor South

Price per month £9,350

Size 624 sf

Virtual Tour ▶

0 0.4 1 2m
SCALE 1:20



A Fully Managed Experience at Hatcher's Yard

A core service package, built around you.



IT & Connectivity



Utilities



General Maintenance



Tea, Coffee & Milk Supplies



Health & Safety



Mobile Access Control



Cleaning & Waste Management

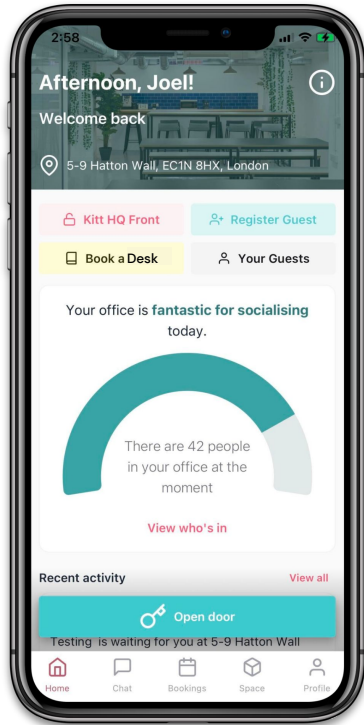


App Client Support & Management

Design & Branding	IT & Connectivity	Utilities	General Maintenance	Tea, Coffee suppliers	Health & Safety	Mobile App Access	Cleaning	Office Management
We will make your space branded, across the space	100mbps fully managed line	All demise utilities covered	Monthly allowance for small general repairs and A/C maintenance	Tea, instant coffee and milk to be supplied and replenished	All standard Health & Safety to be completed regularly	Door access controlled through a mobile app	2 hours per day	Full office management to ensure a smooth operation

Mobile-first office experience

Everything you need to manage your space at your fingertips



Access your space

In-App access means no need for keys, cards or fobs!



Book a desk

Your team can reserve their own dedicated desk in the office ahead of time



Register a guest

Instantly grant your guest building access for their next visit



Request additional products or services

Take your office experience to the next level with tons of available products + services



See how busy your office is

Get a gauge of how many people are in your office today



Send and receive space updates

Stay in the loop on everything you need to know with all important building updates

Get in touch



Josh Blackhurst

josh.blackhurst@kittoffices.com

44 7916 168 932