

DELIVERING Q1 2026

the MERCURY

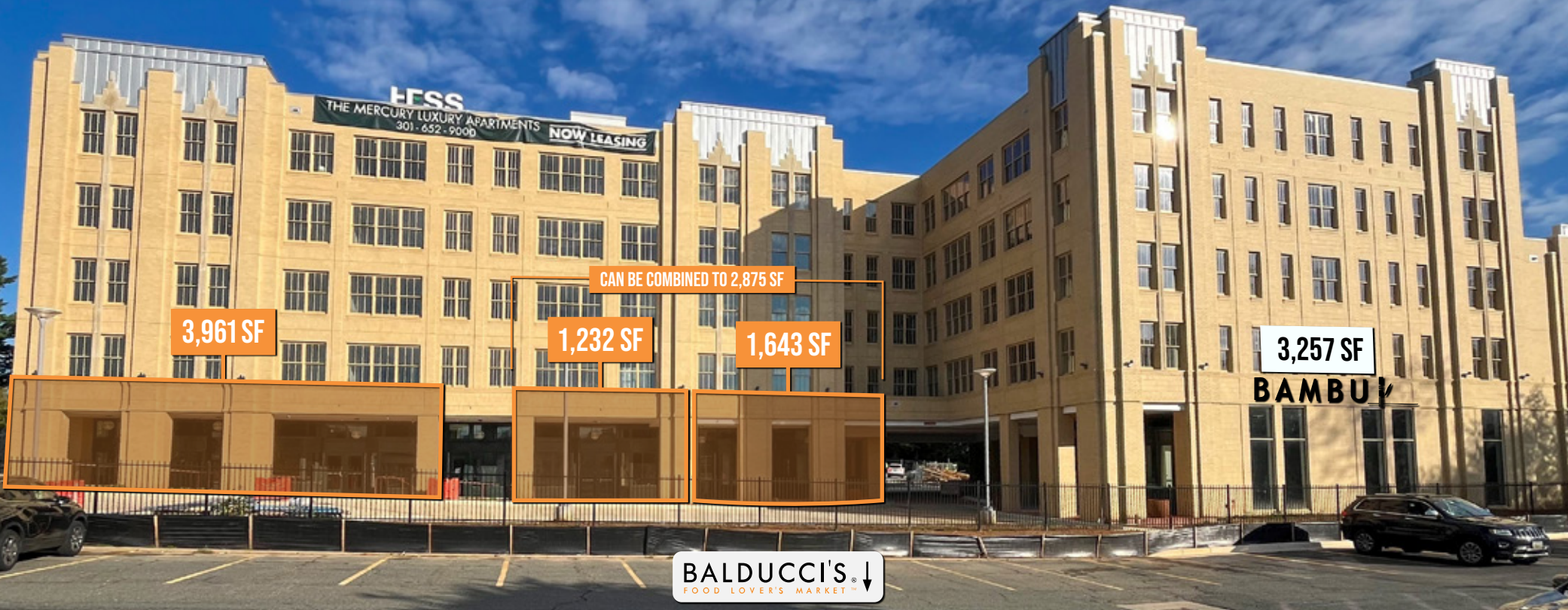
AT WILDWOOD SHOPPING CENTER

10339 OLD GEORGETOWN RD, BETHESDA, MD

60 APARTMENT UNITS

10,093 SF OF RETAIL / RESTAURANT

13 AT GRADE PARKING PLUS 60 DEDICATED GARAGE PARKING



3,961 SF

CAN BE COMBINED TO 2,875 SF

1,232 SF

1,643 SF

3,257 SF

BAMBU

BALDUCCI'S
FOOD LOVER'S MARKET

MATT SKALET | 202-420-7775 | MSKALET@KLNb.COM

BEN BECKER | 202-420-7773 | BBECKER@KLNb.COM

kl**nb**



SITE DETAILS

- New mixed use project adjacent to Bethesda's high-end Wildwood
- 60 new apartments above 3 retail units totaling 10,093 SF
 - Space 1: 3,961 SF Available with Restaurant Venting and dedicated private elevator from the garage into the premise
 - Space 2A: 1,232 SF Available with Restaurant Venting
 - Space 2B: 1,643 SF Available with Restaurant Venting
 - Space 3: 3,257 SF BAMBU
- 60 dedicated retail garage parking spaces plus 114 common surface parking spaces
- Monument signage available on Old Georgetown Road
- Q1 2026 Delivery

2023 DEMOGRAPHICS

	1 Mile	3 Mile	5 Mile	10 Min Drive
Average HH Income	\$218,363	\$211,339	\$208,799	\$226,825
Population	19,390	137,937	376,195	117,736
Daytime Population	26,169	202,318	446,811	178,251
Households	8,076	56,160	142,656	49,228
College Educated	78%	77%	69%	79%

JOIN:



the NEIGHBORHOOD



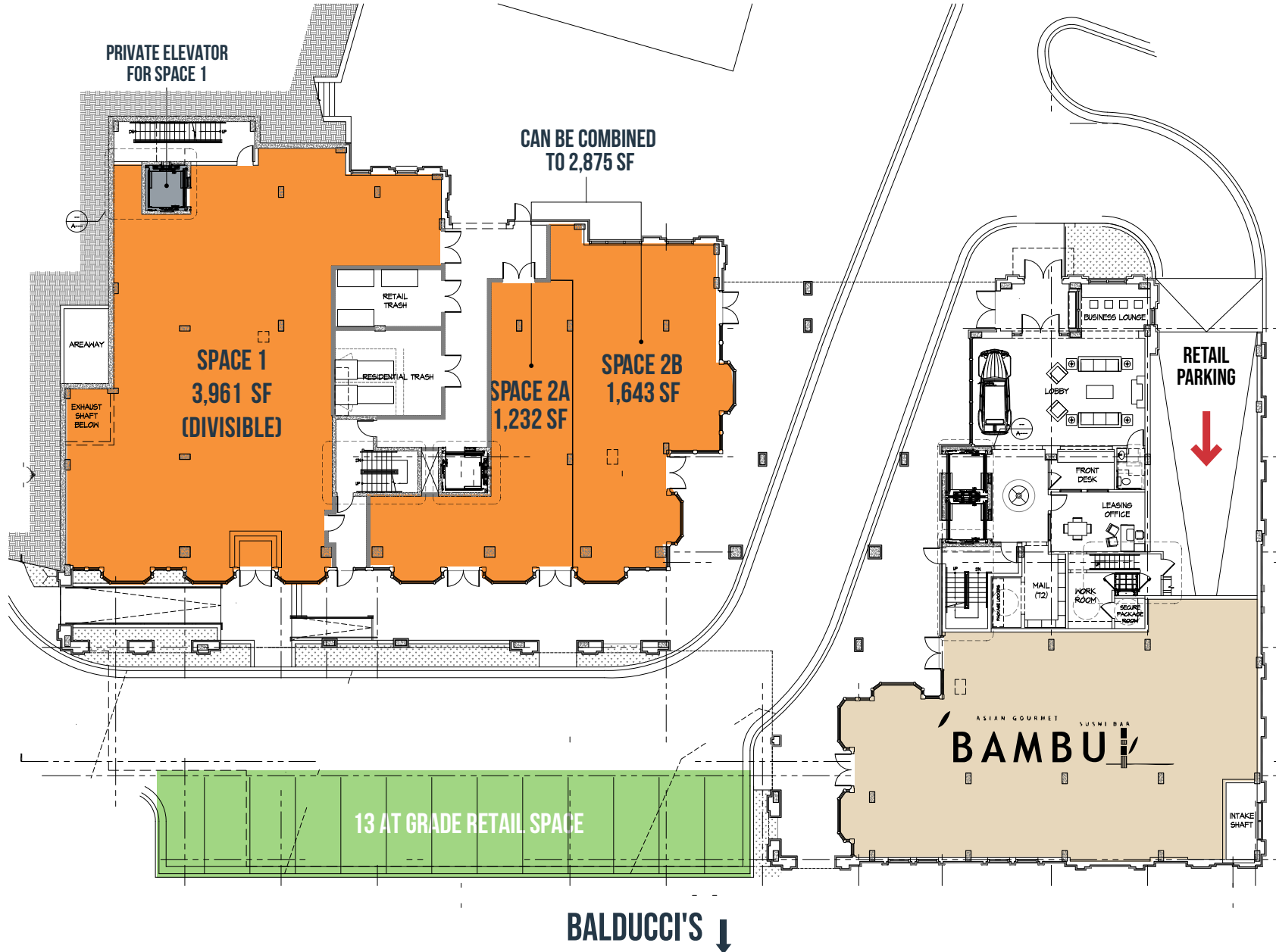
the DEVELOPMENT



the SITE

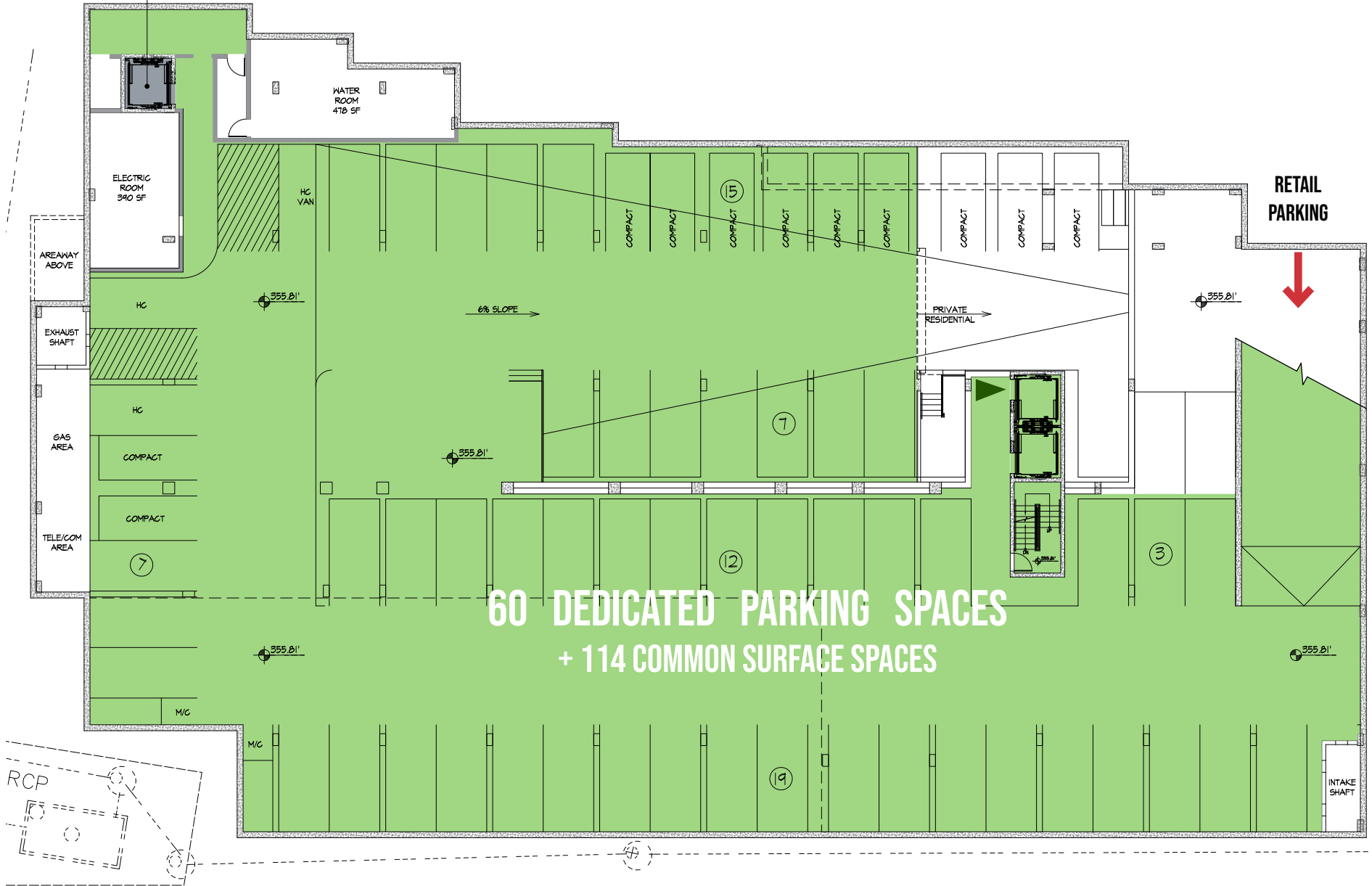
AVAILABLE

↑ OLD GEORGETOWN ROAD



the PARKING

PRIVATE ELEVATOR FOR SPACE 1



60 DEDICATED PARKING SPACES
+ 114 COMMON SURFACE SPACES

the MERCURY

AT WILDWOOD SHOPPING CENTER | BETHESDA, MD

kl**nb**

MATT SKALET | 202-420-7775 | MSKALET@KLNb.COM

BEN BECKER | 202-420-7773 | BBECKER@KLNb.COM

While we have no reason to doubt the accuracy of any of the information supplied, we cannot, and do not, guarantee its accuracy. All information should be independently verified prior to a purchase or lease of the property. We are not responsible for errors, omissions, misuse, or misinterpretation of information contained herein and make no warranty of any kind, express or implied, with respect to the property or any other matters