

Colliers

WESTCHESTER MEDICAL PAVILION

311 NORTH STREET • WHITE PLAINS, NY

ONLY TWO SPACES LEFT

2,511 RSF (*built & ready to occupy*) & 5,200 RSF (*raw & ready to customize*)

HIGH QUALITY MEDICAL SPACE -HIGH QUALITY MEDICAL PRACTICES



**WESTCHESTER
MEDICAL PAVILION**
311 NORTH STREET • WHITE PLAINS, NY

ONLY TWO SPACES LEFT

2,511 RSF (*built & ready to occupy*) & 5,200 RSF (*raw & ready to customize*)

PROPERTY FEATURES

The Westchester Medical Pavilion is conveniently located just minutes from the heart of downtown White Plains with easy access to major hospitals, highways and parkways including I-287, I-684, I-95, I-87, Saw Mill River Parkway, Sprain Brook Parkway and Hutchinson River Parkway.

- **40 minute commute to NYC via highway or Metro North Railroad**
- **The Building designed specifically for medical tenants**

FIRST-CLASS AMENITIES

- 23-acre beautifully landscaped campus setting
- Elegant finishes provide a warm comfortable environment
- Café with free Wi-Fi access
- Outdoor seating and café tables
- Abundant parking for employees and patients
- Complementary valet parking

Colliers

WESTCHESTER MEDICAL PAVILION

311 NORTH STREET • WHITE PLAINS, NY

GROUND FLOOR

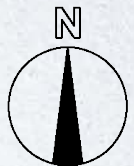
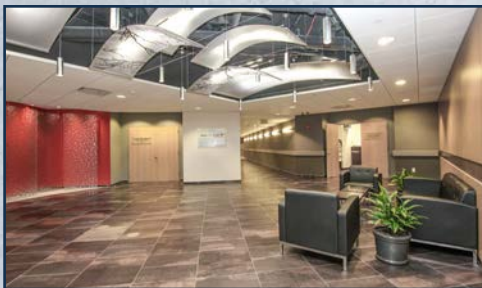
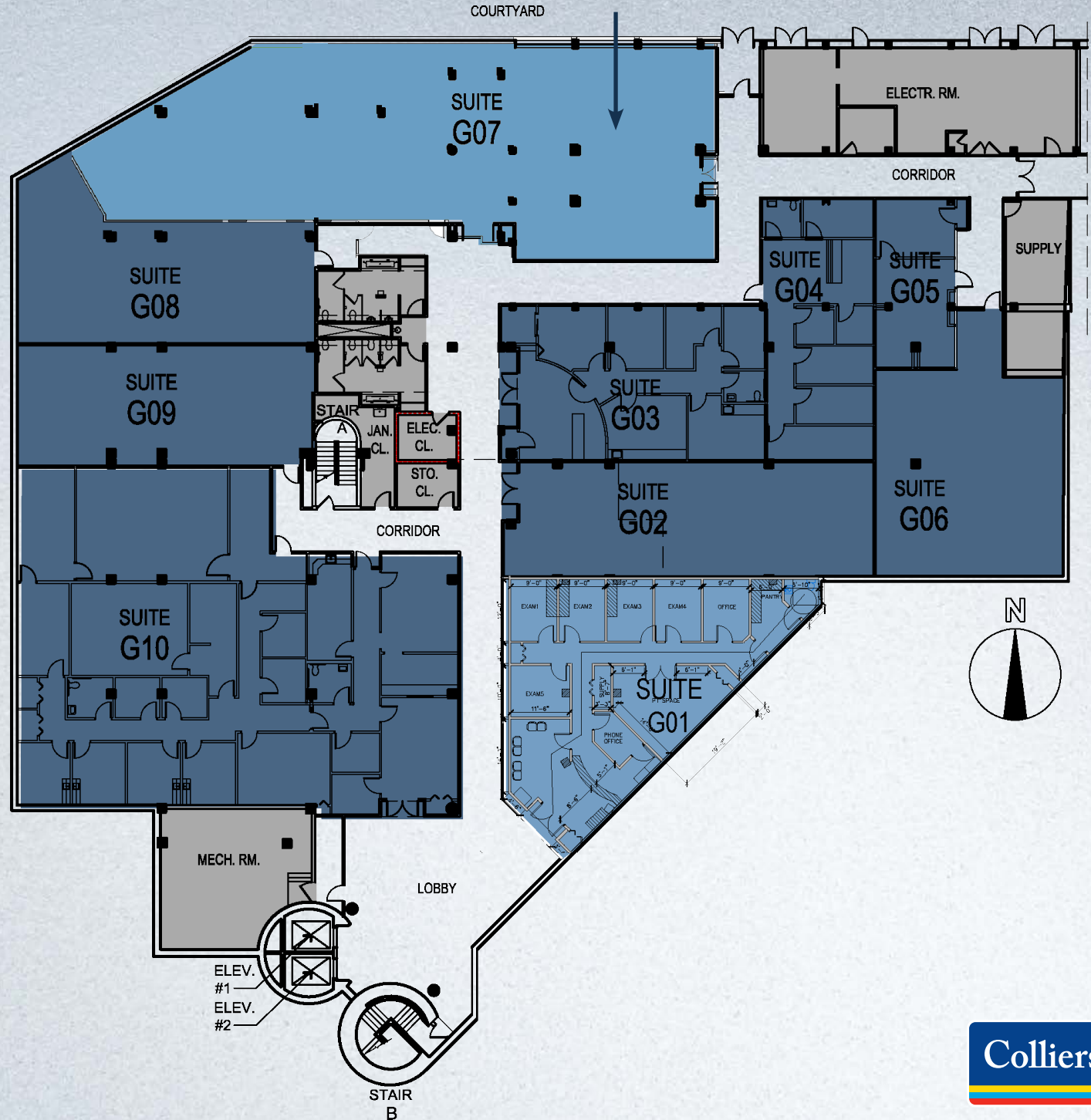
- CURRENT AVAILABLE SPACE
- CURRENT TENANT SPACE
- BUILDING UTILITIES & CIRCULATION

Square Footage

G01: 2,511 SF
G07: 5,200 SF

NOTE

G07 Can have a private entrance



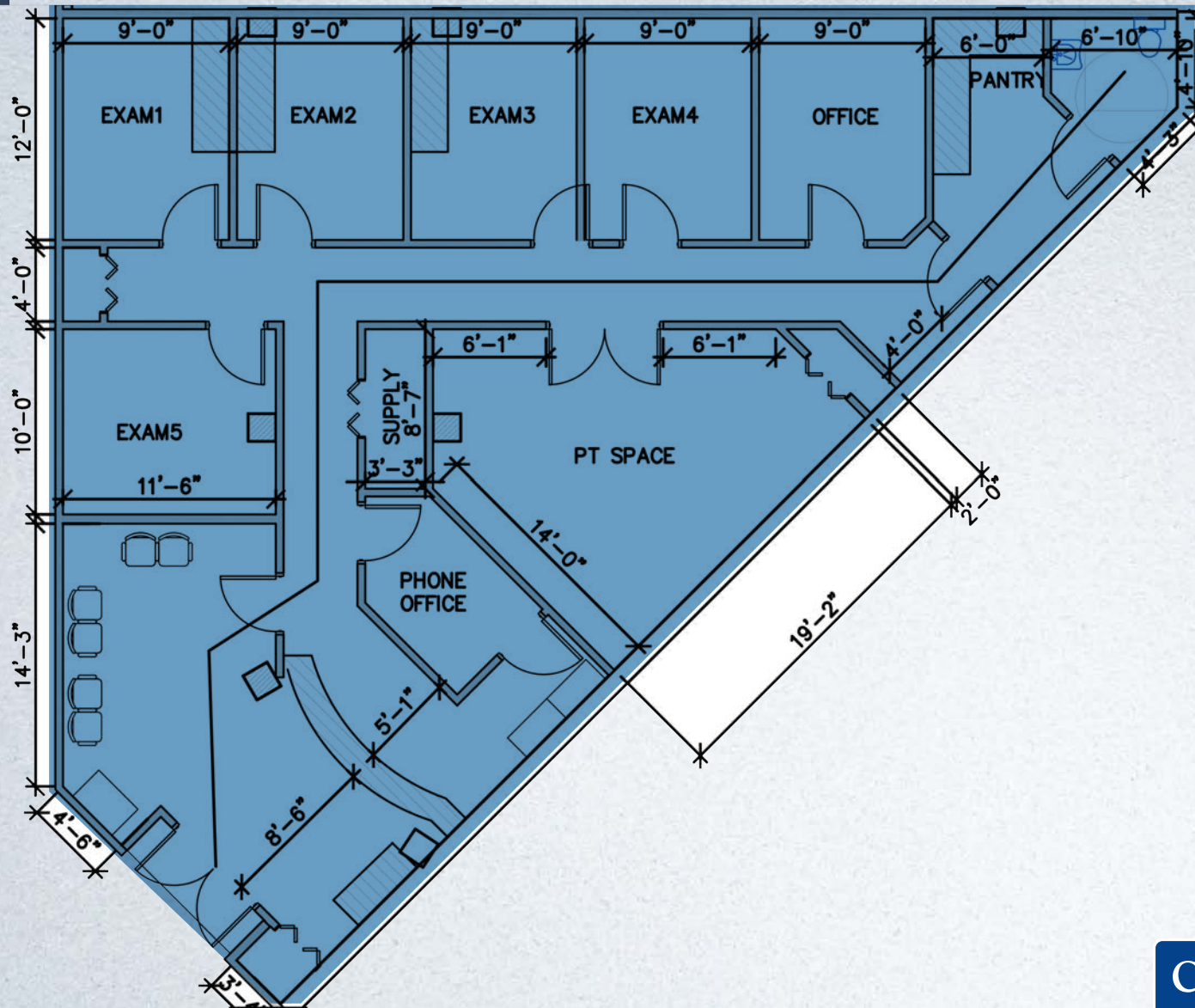
WESTCHESTER MEDICAL PAVILION

311 NORTH STREET • WHITE PLAINS, NY

GROUND FLOOR

Square Footage

G01: 2,511 SF



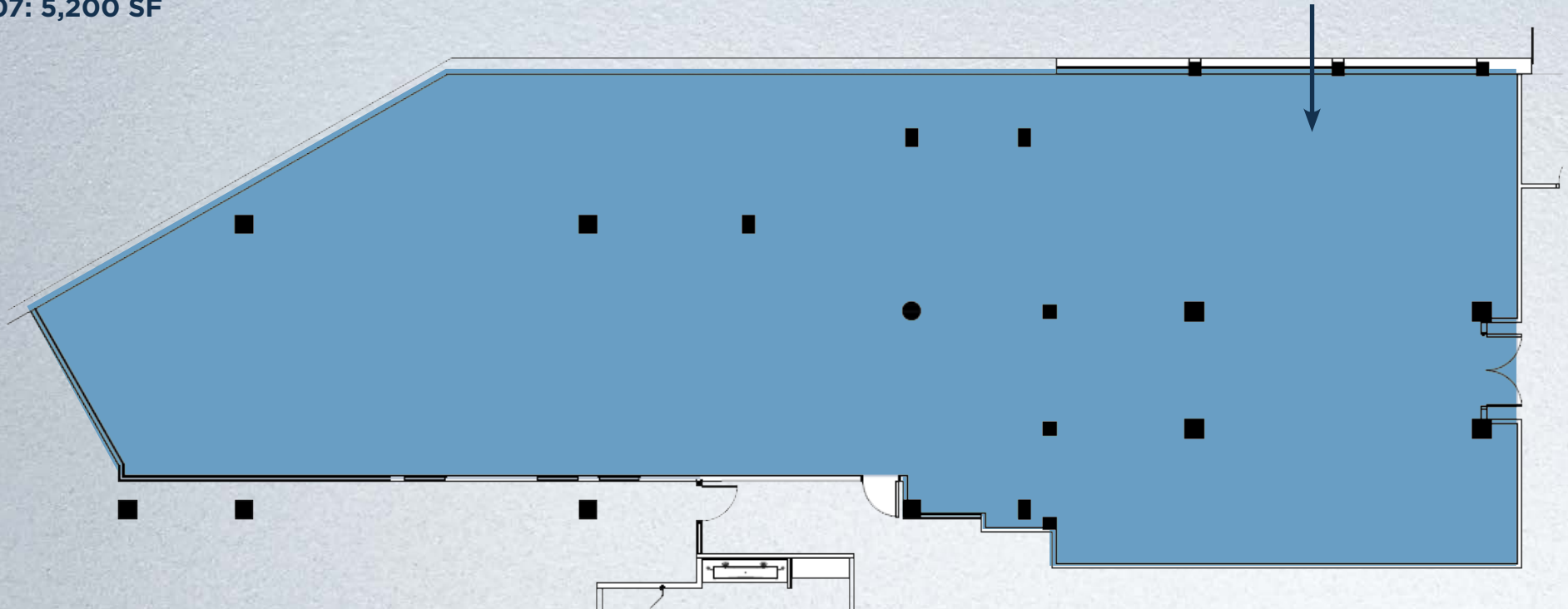
**WESTCHESTER
MEDICAL PAVILION**
311 NORTH STREET • WHITE PLAINS, NY

GROUND FLOOR

Square Footage

G07: 5,200 SF

CAN HAVE A PRIVATE ENTRANCE AND/OR PATIO



WESTCHESTER MEDICAL PAVILION

311 NORTH STREET • WHITE PLAINS

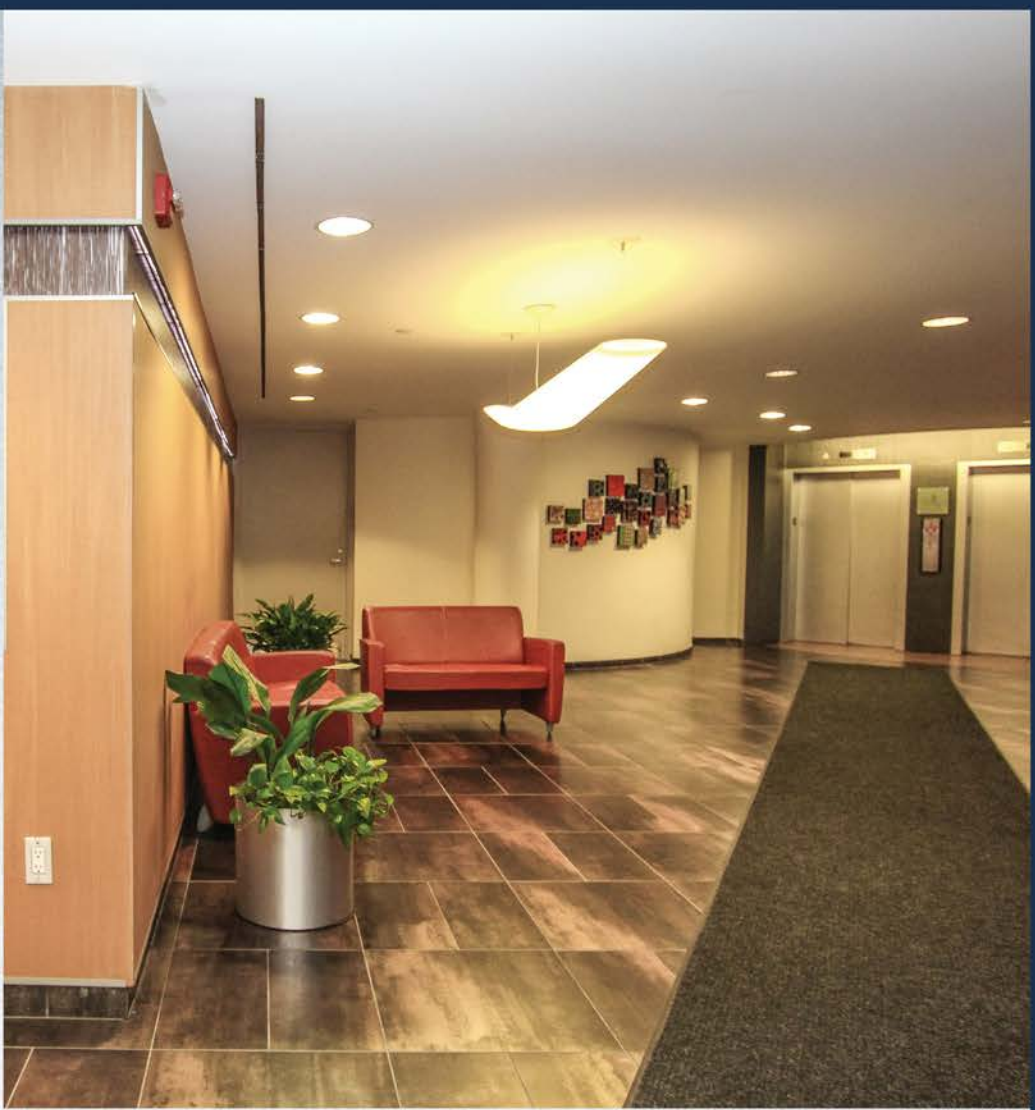
ONLY TWO SPACES LEFT
2,511 RSF & 5,200 RSF

Relocate to or open in the most conveniently located Medical office building to the most conveniently located, highest quality medical office building in the area. With practices such as Orthopedics, Plastic Surgery, Geriatric, Physical Therapy, Cardiology, Ophthalmology, Pediatrics, Psychiatric, Dental, Chiropractic, Family, Wellness and a diagnostics and imaging center complete with MRI, stand-up MRI and ultrasound. The Westchester Medical Pavilion is truly the best location for medical practices in Westchester County.

The Westchester Medical Pavilion is designed for today's medical practices, offering minimal out of pocket and even "turn key" medical build outs with state-of-the-art building systems, available back up power and attractive amenities.

In addition, The Bristol, a 148 bed Assisted Living facility, is just stepsaway. The Bristol residents take full advantage of the close proximity of our doctors.



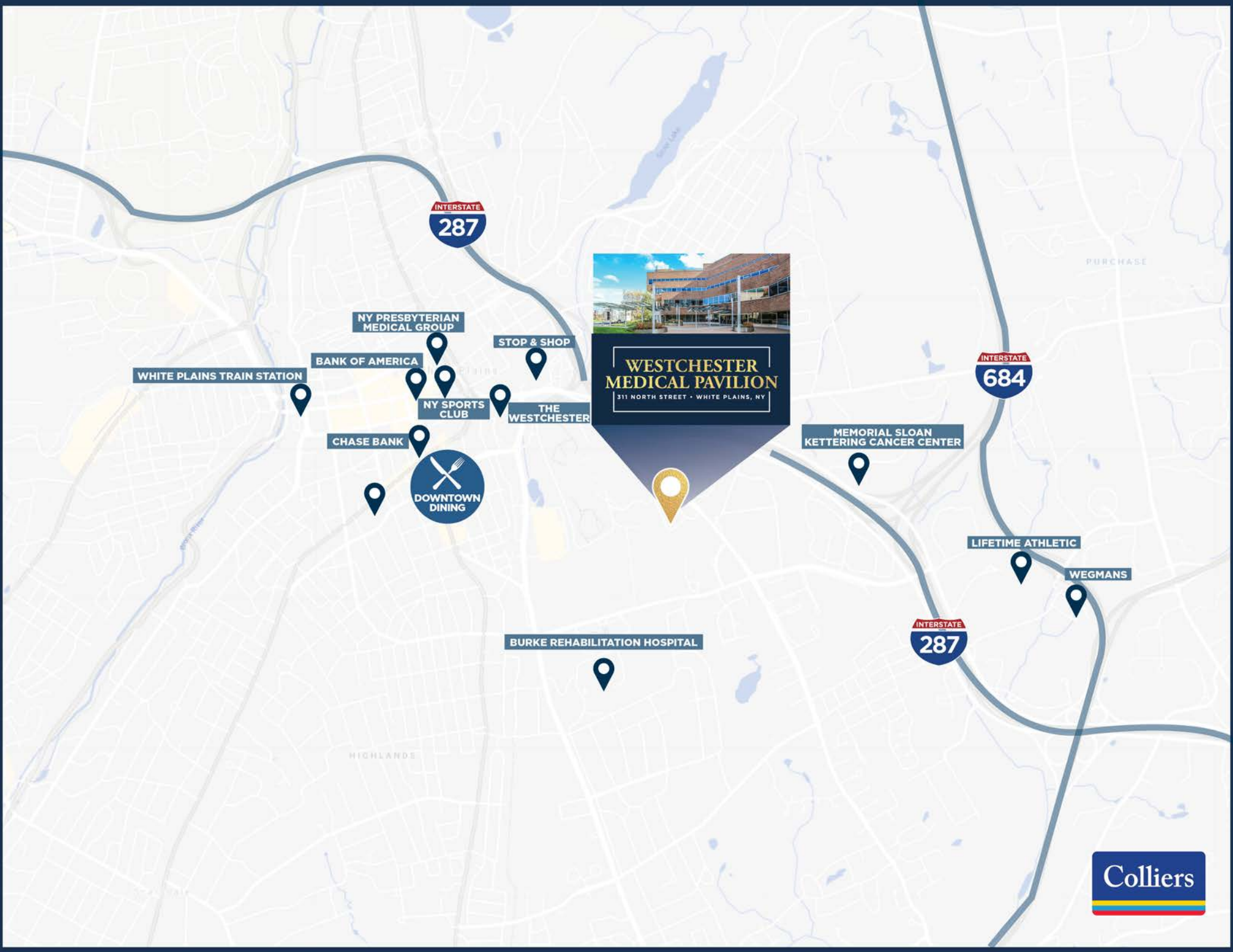


Area Map



**WESTCHESTER
MEDICAL PAVILION**
311 NORTH STREET • WHITE PLAINS, NY





INTERSTATE
287

INTERSTATE
684

INTERSTATE
287



**WESTCHESTER
MEDICAL PAVILION**
311 NORTH STREET · WHITE PLAINS, NY

NY PRESBYTERIAN
MEDICAL GROUP

STOP & SHOP

BANK OF AMERICA

WHITE PLAINS TRAIN STATION

NY SPORTS
CLUB

THE
WESTCHESTER

CHASE BANK



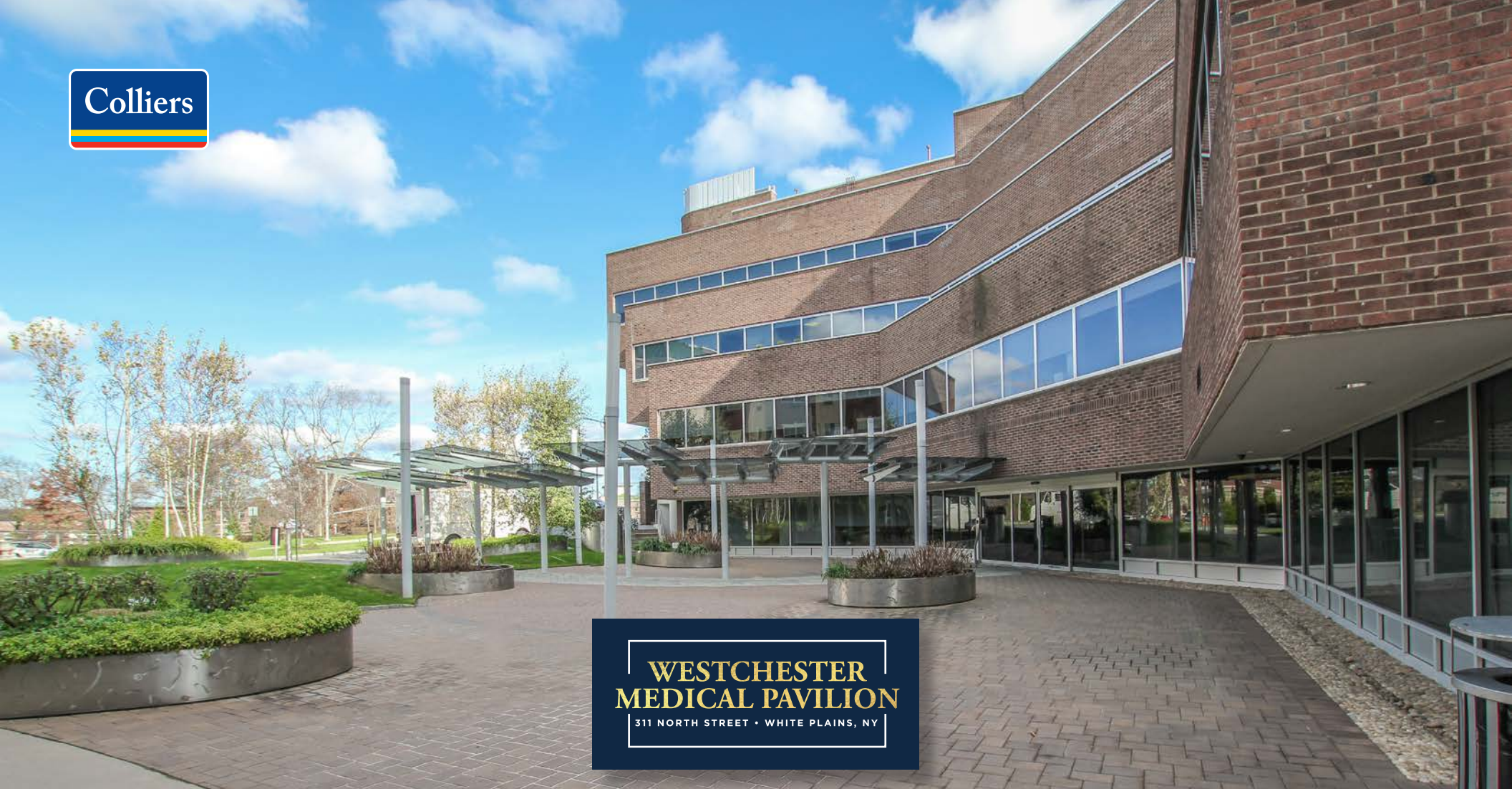
MEMORIAL SLOAN
KETTERING CANCER CENTER

LIFETIME ATHLETIC

WEGMANS

BURKE REHABILITATION HOSPITAL





**WESTCHESTER
MEDICAL PAVILION**
311 NORTH STREET • WHITE PLAINS, NY

Craig S. Ruoff

Executive Vice President
Associate Real Estate Broker
CELL +1 914 441 7688
craig.ruoff@colliers.com

No representation is made as to the accuracy of the information furnished herein and same is submitted subject to errors, omissions, change of prices, rental, or other conditions, prior sale, lease, sublease, and/or withdrawal without notice. While every attempt is made to ensure accuracy, the floor plan(s) is for guidance only. The measurements, dimensions, specifications, and other data shown are approximate and may not be to scale. We assume no responsibility for the accuracy of the floor plan(s) or for any action taken in reliance thereon. The floor plan(s) do not create any representation, warranty or contract. All parties should consult a professional, such as an architect, to verify the information contained herein. The furnishing of this information shall not be deemed a hiring. A commission in accordance with our principal's schedule of rates and conditions will be paid to the procuring Broker who executes our or our principal's brokerage agreement, subject to a fully consummated transaction upon terms and conditions acceptable to our principal.