

For Lease

*1395-
1467*

Boul. Michele-Bohec,
Blainville, Qc

OBERFELD SNOWCAP

For more information, please contact:

*Manon Larose**

Managing Director – Client Services

1 438 990-8968

manonl@oberfeldsnowcap.com

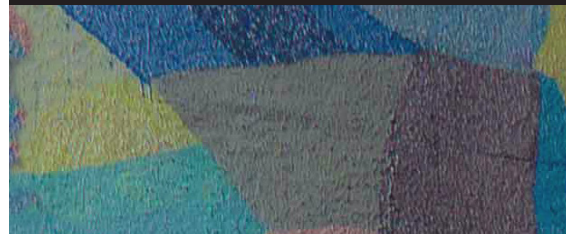


*Michelle Marcotte-Blart***

Director – Client Services

1 514 972-6163

michelle@oberfeldsnowcap.com



Overview

The site is anchored by well-known retailers such as Rona, SAQ, Dollarama and Chocolate Favoris. Located at the corner of Michele-Bohec Blvd. and St.-Anne-des-Plaines, the space offers excellent visibility.

Area Demographics

Source: Statistics Canada, 2021

Property Details

SQUARE FOOTAGE

- Unit A: 4,451 SF
- Unit B: 1,553 SF
- Unit C: 5,112 SF
- Unit D: 4,205 SF
- Unit E: 5,065 SF

ADDRESS

1395-1467 Boulevard Michele-Bohec,
Blainville, QC

AVAILABILITY

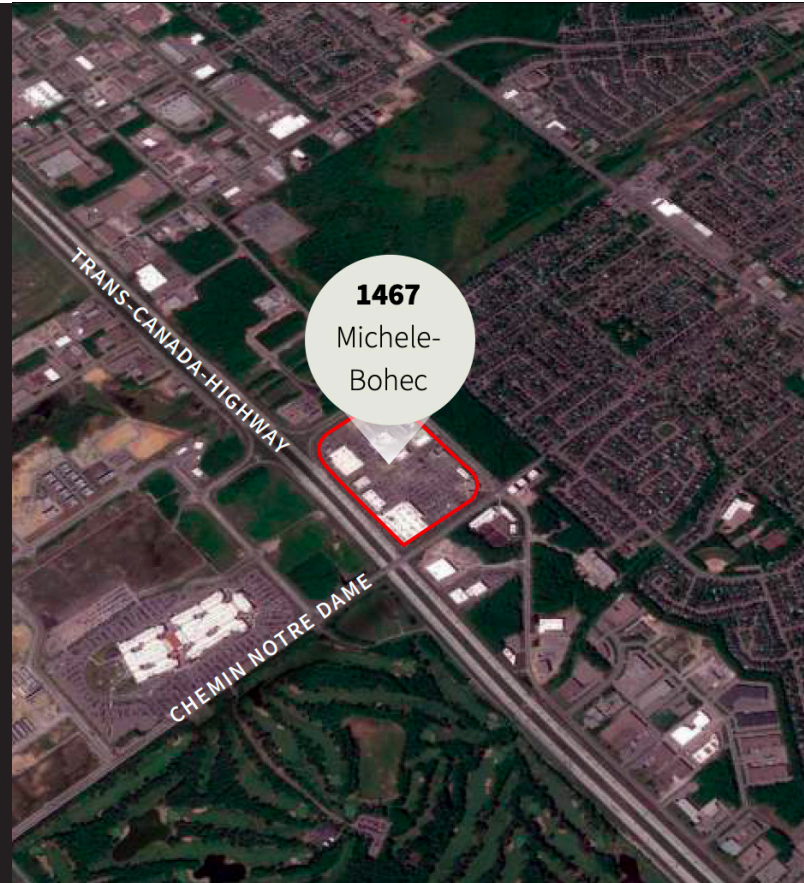
Immediate

BASIC RENT

Contact listing brokers

ADDITIONAL RENT (2022)

\$12.38pSF*

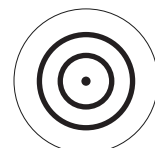


	5KM	10KM	15KM
Total Population	69,541	172,377	464,006
Daytime Population	63,827	156,716	406,852
Median Age	39,6	40,6	41,9
Total Households	26,117	65,631	178,695
Average HH Income	\$119,964	\$121,517	\$112,669
Total Expenditure (Per Household)	\$120,967	\$121,657	\$112,795

Project Highlights



Many parking spaces available



High Visibility from Boulevard Michele-Bohec

Overview

Available Suites

Unit	SF
Unit A	4,451 SF
Unit B	1,553 SF
Unit C	5,112 SF
Unit D	4,205 SF
Unit E	5,065 SF



Nearby Retailers



1. Cour à Bois
2. Winners
3. RONA Blainville
4. Carlos & Pepe's - Blainville
5. Dollarama
6. Mr. Puffs
7. Petinos Blainville
8. Chocolats Favoris
9. La Chambre - Blainville
10. Five Guys
11. Bulk Barn
12. Restaurant Boustan
13. Coco Frutti Blainville
14. Shop Santé Blainville
15. Benny&Co.
16. SAQ Dépôt
17. Notre-Boeuf-De-Grâce Blainville
18. Walmart Supercentre
19. Trévi Blainville
20. Familiprix Clinique
21. Starbucks

For Lease

**1395-
1467**

Boul. Michele-Bohec,
Blainville, Qc

OBERFELD SNOWCAP

For more information, please contact:

Manon Larose*

Managing Director – Client Services

1 438 990-8968

manonl@oberfeldsnowcap.com



Michelle Marcotte-Blart**

Director – Client Services

1 514 972-6163

michelle@oberfeldsnowcap.com

