

25405 HANCOCK AVENUE | MURRIETA, CA

WALSH

MEDICAL ARTS CENTER



MEDICAL OFFICE SPACE FOR LEASE



CBRE

PROPERTY FEATURES



CLASS "A"
MEDICAL
OFFICE
PROJECT



TWO-STORY
LOBBY



ADJACENT
TO RANCHO
SPRINGS
MEDICAL CENTER



EASY ACCESS
TO BOTH I-15
AND I-215



ABUNDANT
PARKING



TENANT MIX
INCLUDES:
SURGERY CENTER,
DENTISTRY,
CARDIOLOGY, ETC.



AVAILABILITY

SUITE	RENTABLE SF	ASKING RATES
SUITE 216	4,678 SF	Negotiable

- * DIVISIBLE DOWN TO **2,000 SF**
- * INSTITUTIONAL LANDLORD PROVIDING ATTRACTIVE TENANT IMPROVEMENT ALLOWANCE PACKAGES.

EXTERIOR PHOTOS



INTERIOR PHOTOS

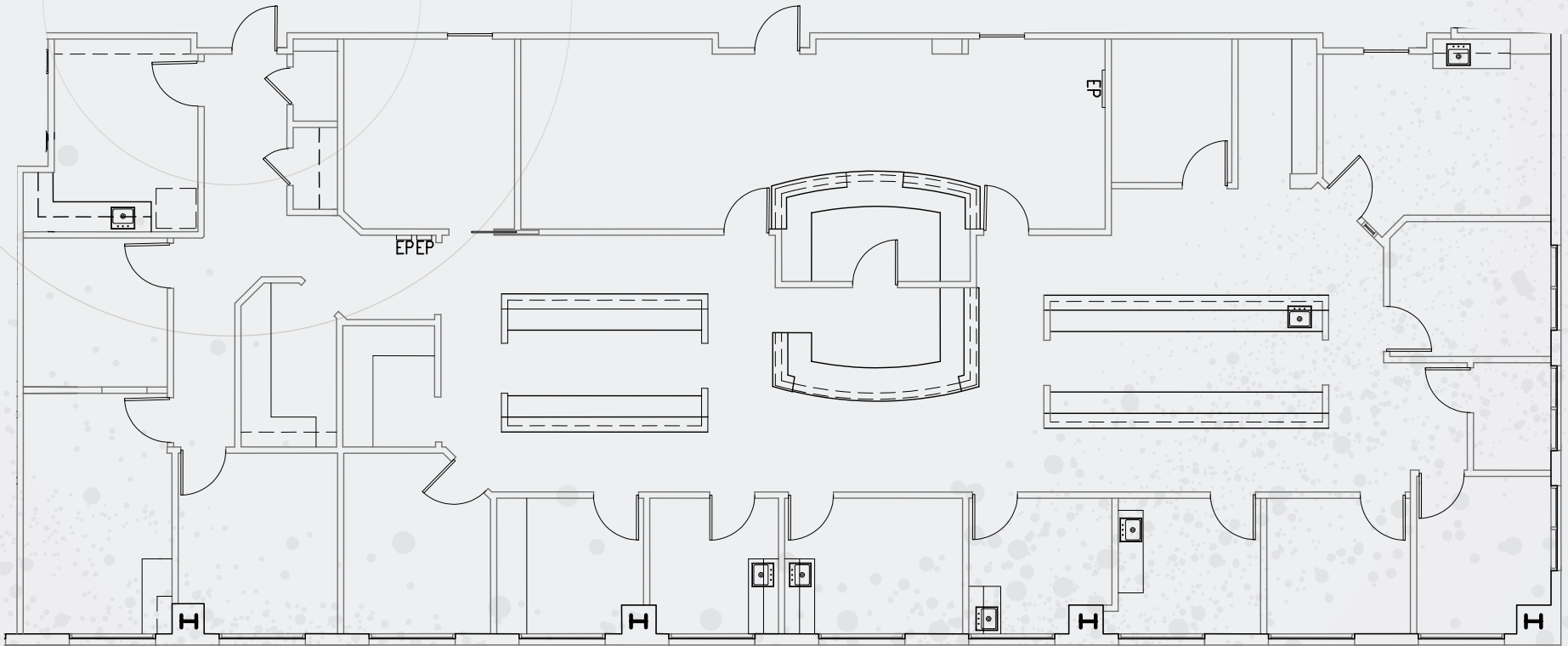


INTERIOR PHOTOS



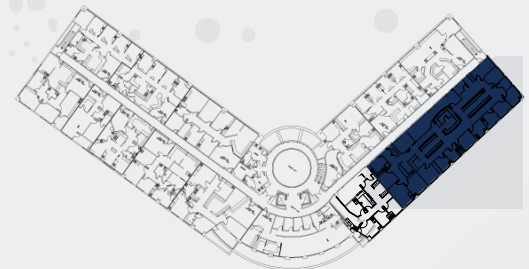
FLOOR PLAN

SUITE 216 | 4,678 SF



 VIRTUAL TOUR

 AVAILABLE



WALSH

MEDICAL ARTS CENTER

H

Rancho Springs
Medical Center

Retail Plaza

Murrieta Hot Springs

New Planned
Retail Development

INTERSTATE
215

INTERSTATE
15

Burlington

Toys R Us

ROSS
DRESS FOR LESS

24
FITNESS

Sizzler

Walgreens

Pollo
Loco

Rubio's

DICK'S
Clothing & Sporting Goods

BUFFALO
WILD
WINGS

THE
HOME
DEPOT

PETSMART

IHOP
RESTAURANT

Denny's

COLD STONE
CREAMERY

25405 HANCOCK AVENUE | MURRIETA, CA

WALSH

MEDICAL ARTS CENTER

LARS EISENHAUER

Senior Vice President

Lic. 01372911

+1 760 438 8534

lars.eisenhauer@cbre.com

DAN HENRY

Vice President

Lic. 02035998

+1 760 438 8569

dan.henry@cbre.com



© 2025 CBRE, Inc. All rights reserved. This information has been obtained from sources believed reliable but has not been verified for accuracy or completeness. CBRE, Inc. makes no guarantee, representation or warranty and accepts no responsibility or liability as to the accuracy, completeness, or reliability of the information contained herein. You should conduct a careful, independent investigation of the property and verify all information. Any reliance on this information is solely at your own risk. CBRE and the CBRE logo are service marks of CBRE, Inc. All other marks displayed on this document are the property of their respective owners, and the use of such marks does not imply any affiliation with or endorsement of CBRE. Photos herein are the property of their respective owners. Use of these images without the express written consent of the owner is prohibited. BSO_11.4.25