

Dupont Industrial Center

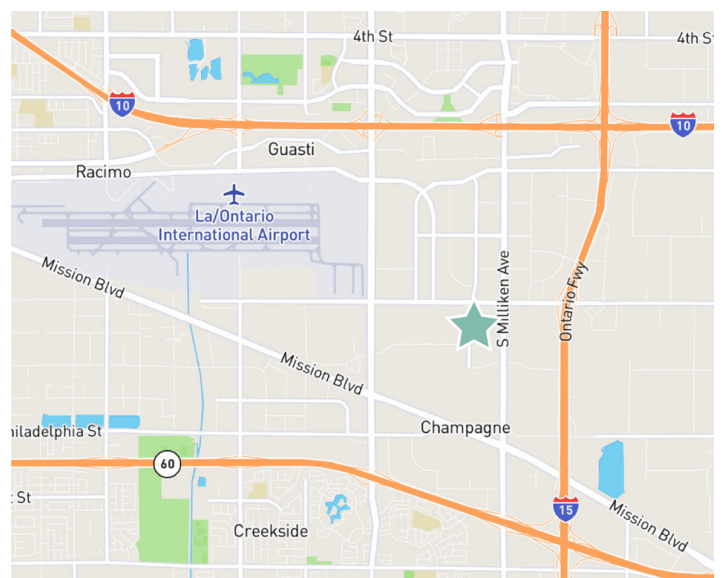
±6,960 SF
AVAILABLE

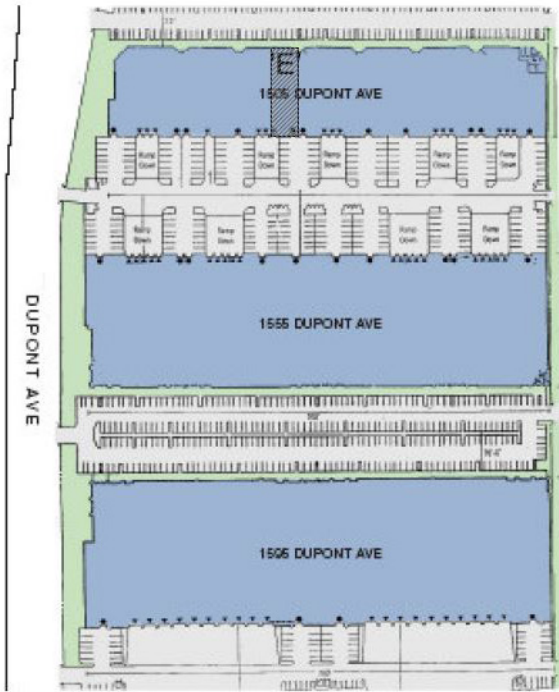
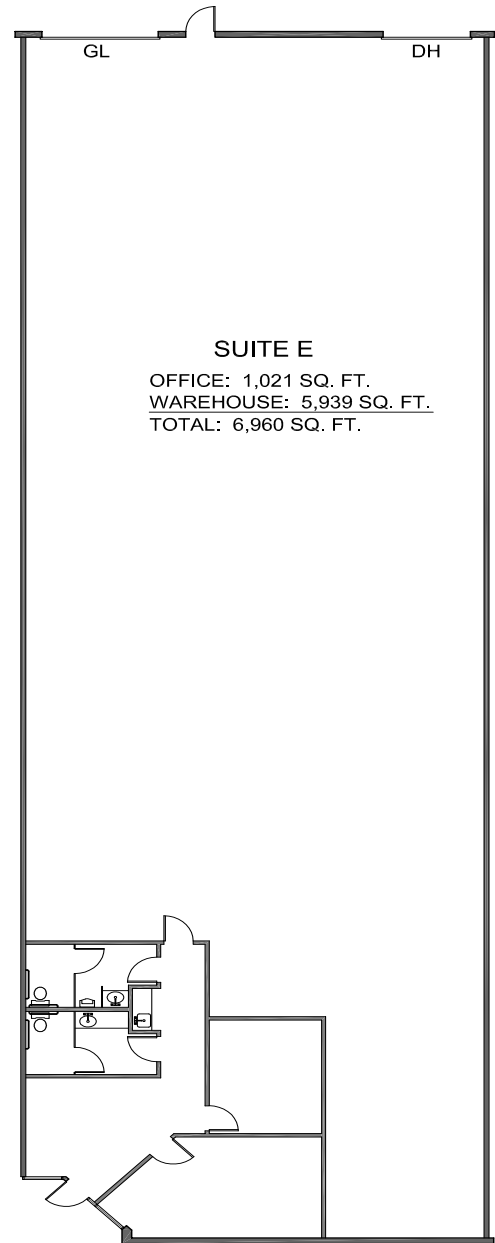
1505 S Dupont Ave Unit E | Ontario, CA 91761



Property Highlights

- + ±6,960 SF Industrial Building
- + ±1,021 SF of Office Space
- + 20' Minimum Clear Height
- + 0.33 GPM/3,000 SF Sprinkler System
- + 1 Dock High Doors, 1 Grade Level Doors
- + Fenced & Secured Yard Space
- + 200 Amps, 120/208 volts, 3 phase
- + 48' x 48' Typical Bay Spacing
- + Secured Concrete Truck Court
- + Part of California Commerce Center
- + 188' Reciprocal Trucking Court and Staging Area





KEY PLAN

N.T.S.



Contact Us

Len Santoro
Senior Vice President
+1 909 418 2158
len.santoro@cbre.com
Lic. 00758706

Wes Jones
Executive Vice President
+1 909 418 2070
wes.jones@cbre.com
Lic. 01783489

James Toomarian
First Vice President
+1 909 418 2083
james.toomarian@cbre.com
Lic. 02030414

Andrew Chaffee
Associate
+1 909 418 2098
andrew.chaffee@cbre.com
Lic. 02168894

© 2025 CBRE, Inc. All rights reserved. This information has been obtained from sources believed reliable, but has not been verified for accuracy or completeness. You should conduct a careful, independent investigation of the property and verify all information. Any reliance on this information is solely at your own risk. CBRE and the CBRE logo are service marks of CBRE, Inc. All other marks displayed on this document are the property of their respective owners, and the use of such logos does not imply any affiliation with or endorsement of CBRE. Photos herein are the property of their respective owners. Use of these images without the express written consent of the owner is prohibited.