

JERICO PLAZA 1 & 2

Jericho, NY 11753



Leasing Information:
212.752.1041

Chris Wittmann
212.752.1041
cwittmann@lpc.com

Mike Taylor
973.879.8020
mtaylor@lpc.com

Lincoln

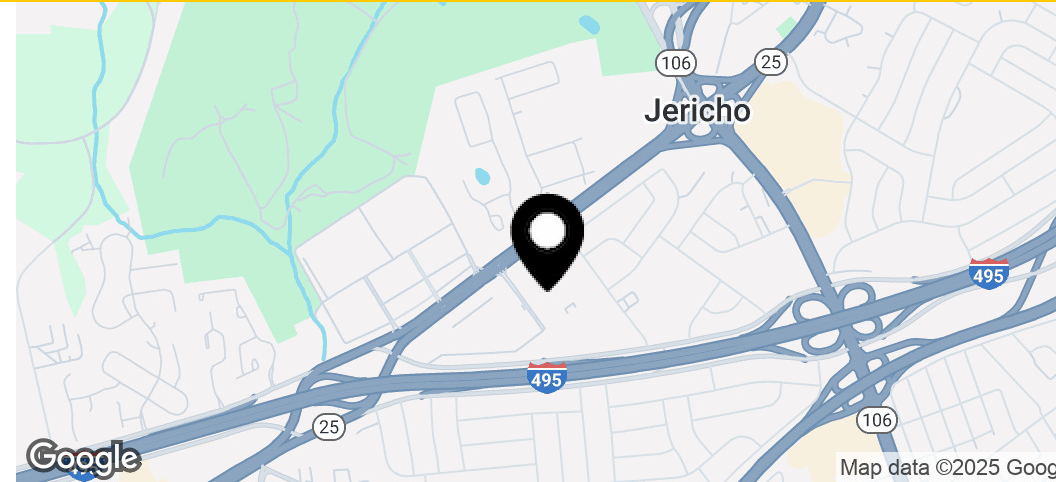
Lincoln Property Company
500 Fifth Avenue, Floor 57
New York, NY 10110

www.lpc.com

JERICHO PLAZA 1 & 2

Jericho, NY 11753

Office For Lease



Property Highlights

- Concierge & 24 hour security desks
- Newly renovated lobby & full service café
- Tenant-only fitness center
- Direct access from Exit 40E of the LIE
- On-site property management
- 1.1/1,000 SF surface parking ratio

Property Overview

Jericho 1: 300,000 SF Total | 100,000 SF Typical Floor Plate
Jericho 2: 638,000 SF Total | 212,000 SF Typical Floor Plate

| Availabilities | SF | Date Available |
|-------------------------------------|-----------|-----------------------|
| Jericho Plaza 1 1st Floor | 6,467 SF | Available Immediately |
| Jericho Plaza 1 1st Floor Suite B | 8,414 SF | Available Immediately |
| Jericho Plaza 1 1st Floor Suite C | 5,664 SF | Available Immediately |
| Jericho Plaza 1 2nd Floor B Wing | 11,453 SF | Available Immediately |
| Jericho Plaza 2 Partial 1st Floor | 4,240 SF | Immediately |
| Jericho Plaza 2 1st Floor A Wing | 2,016 SF | Available Immediately |
| Jericho Plaza 2 1st Floor B Wing | 814 SF | Available Immediately |
| Jericho Plaza 2 Partial 3rd Floor | 20,771 SF | September 2026 |

Chris Wittmann **Mike Taylor**
212.752.1041 973.879.8020
cwittmann@lpc.com mtaylor@lpc.com

Lincoln

JERICO PLAZA 1 & 2

Jericho, NY 11753

Newly Renovated Lobby
937,040 SF



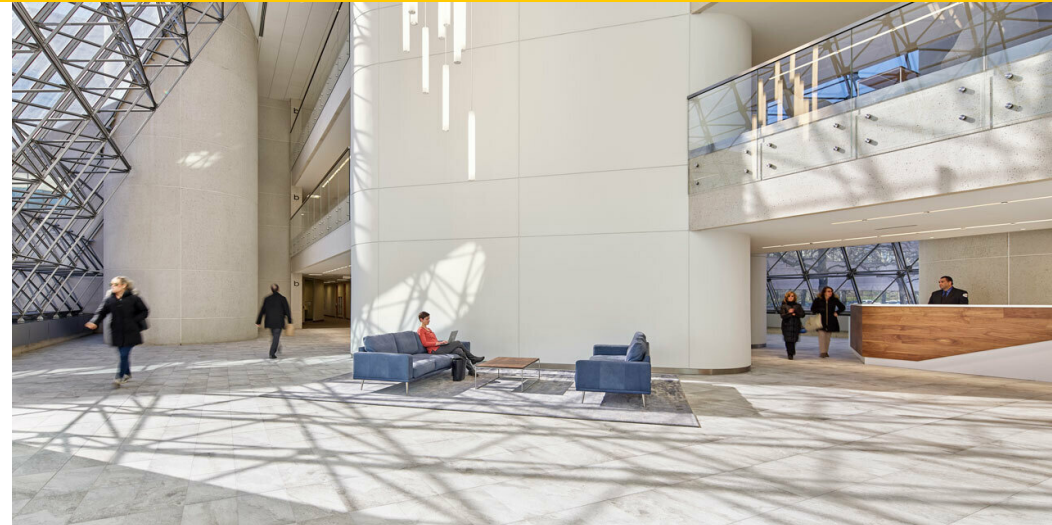
Chris Wittmann **Mike Taylor**
212.752.1041 973.879.8020
cwittmann@lpc.com mtaylor@lpc.com

Lincoln

JERICO PLAZA 1 & 2

Jericho, NY 11753

Modernized Amenities
937,040 SF



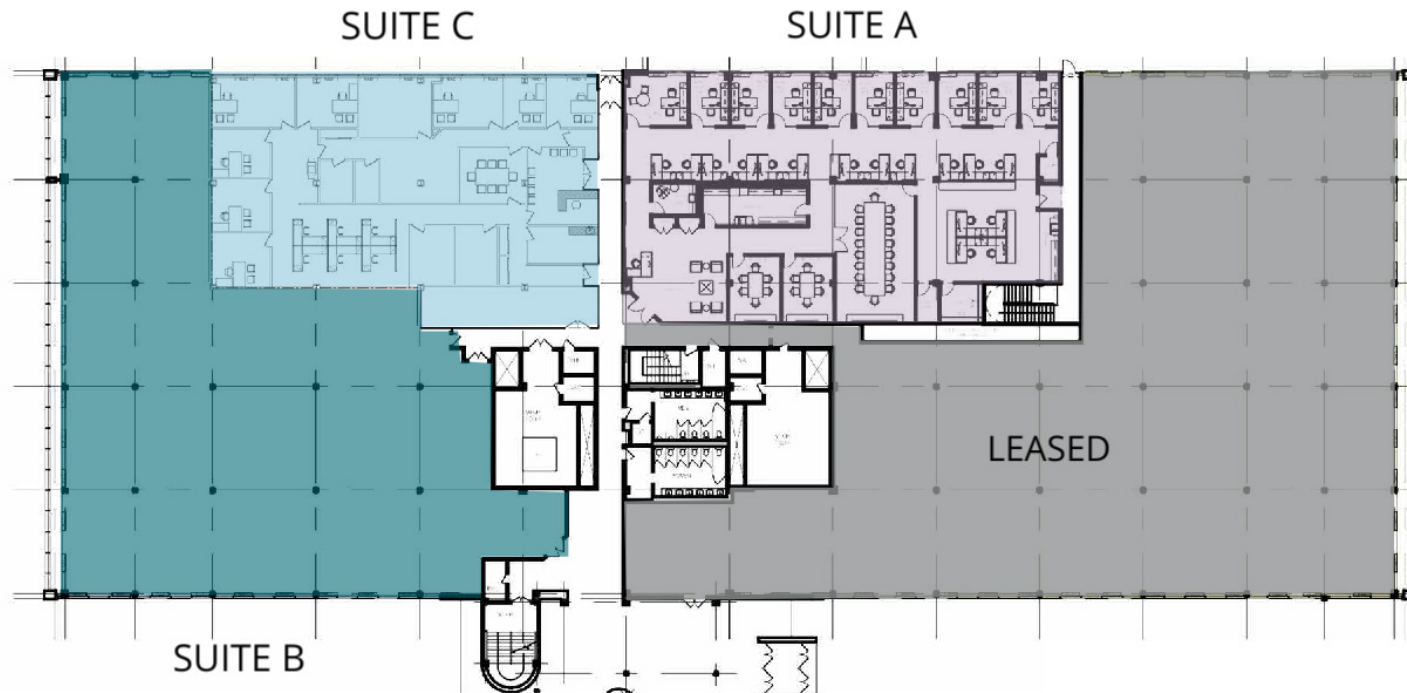
Chris Wittmann **Mike Taylor**
212.752.1041 973.879.8020
cwittmann@lpc.com mtaylor@lpc.com

Lincoln

JERICO PLAZA 1 & 2

Jericho, NY 11753

Jericho Plaza 1 | 1st Floor



| Suite | Size | Description |
|---------------------------------------|-----------|-----------------------|
| ■ Jericho Plaza 1 1st Floor | 6,467 SF | Available Immediately |
| ■ Jericho Plaza 1 1st Floor Suite C | 5,664 SF | Available Immediately |
| ■ Jericho Plaza 1 2nd Floor B Wing | 11,453 SF | Available Immediately |

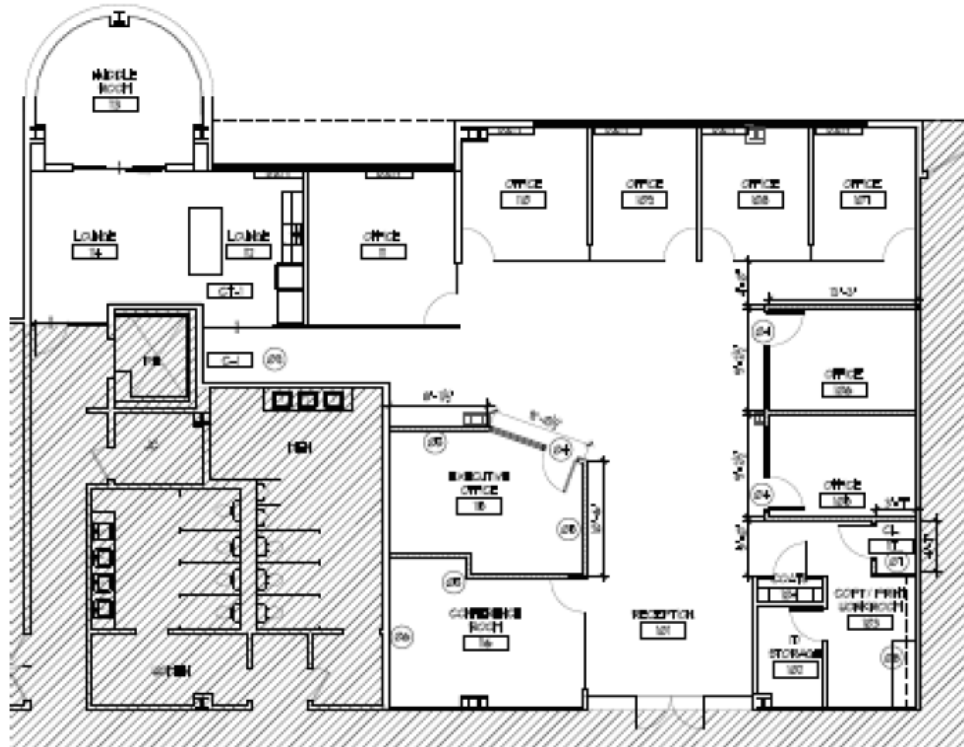
Chris Wittmann **Mike Taylor**
212.752.1041 973.879.8020
cwittmann@lpc.com mtaylor@lpc.com

Lincoln

JERICHO PLAZA 1 & 2

Jericho, NY 11753

Jericho Plaza 2 | Partial 1st Floor



| Suite | Size | Lease Rate | Description |
|-------------------------------------|----------|------------|-------------------------------------|
| Jericho Plaza 2 Partial 1st Floor | 4,240 SF | Negotiable | Highly improved built office space. |

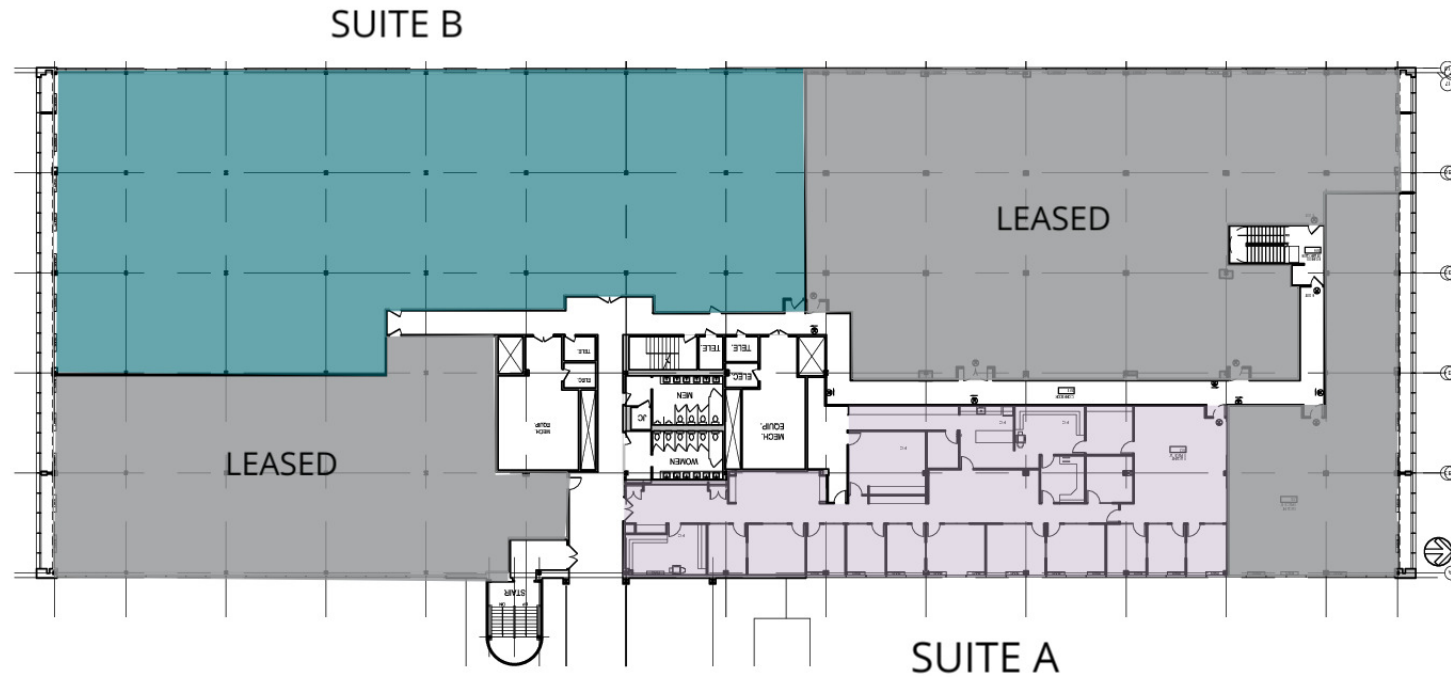
Chris Wittmann **Mike Taylor**
212.752.1041 973.879.8020
cwittmann@lpc.com mtaylor@lpc.com

Lincoln

JERICO PLAZA 1 & 2

Jericho, NY 11753

Jericho Plaza 1 | 2nd Floor



| Suite | Size | Description |
|--------------------------------------|-----------|-----------------------|
| ■ Jericho Plaza 1 2nd Floor B Wing | 11,453 SF | Available Immediately |

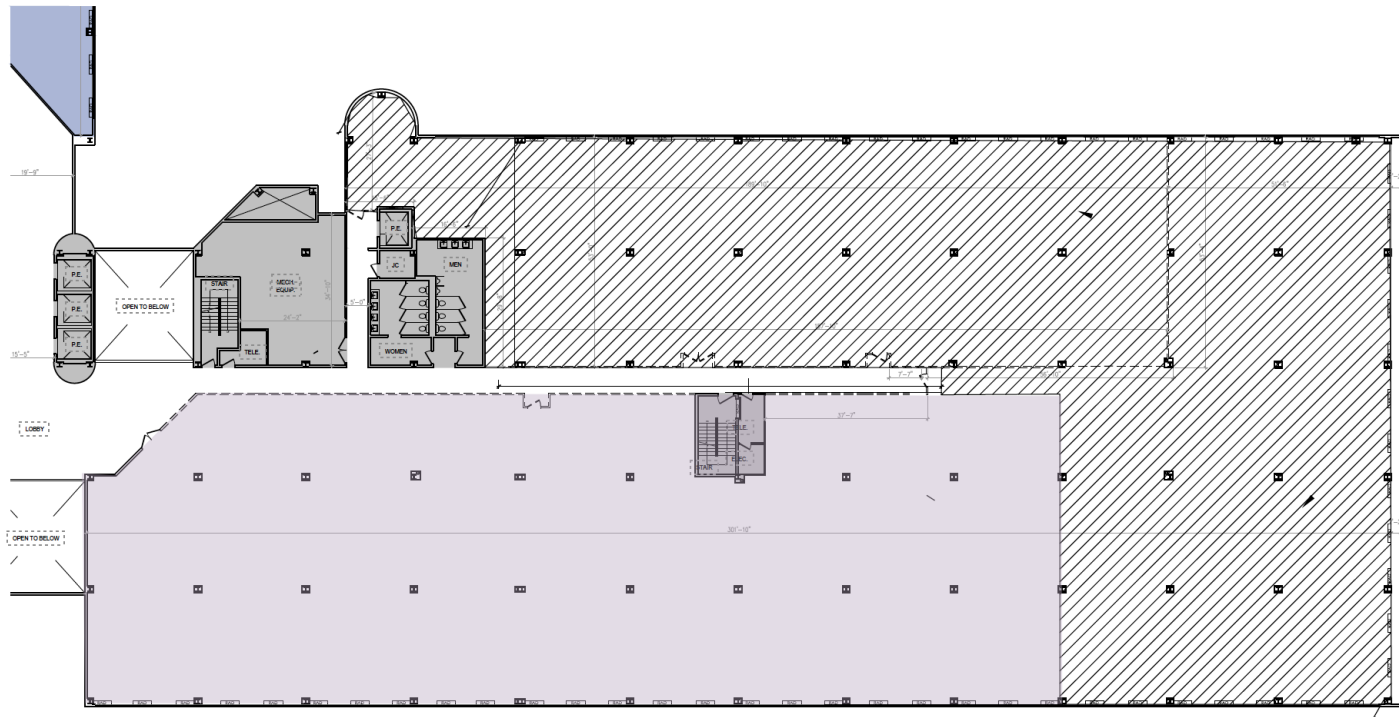
Chris Wittmann **Mike Taylor**
212.752.1041 973.879.8020
cwittmann@lpc.com mtaylor@lpc.com

Lincoln

JERICO PLAZA 1 & 2

Jericho, NY 11753

Jericho Plaza 2 | 3rd Floor



| Suite | Size | Lease Rate | Description |
|--------------------------------------|-----------|------------|-------------|
| ■ Jericho Plaza 2 3rd Floor C Wing | 22,045 SF | Negotiable | - |

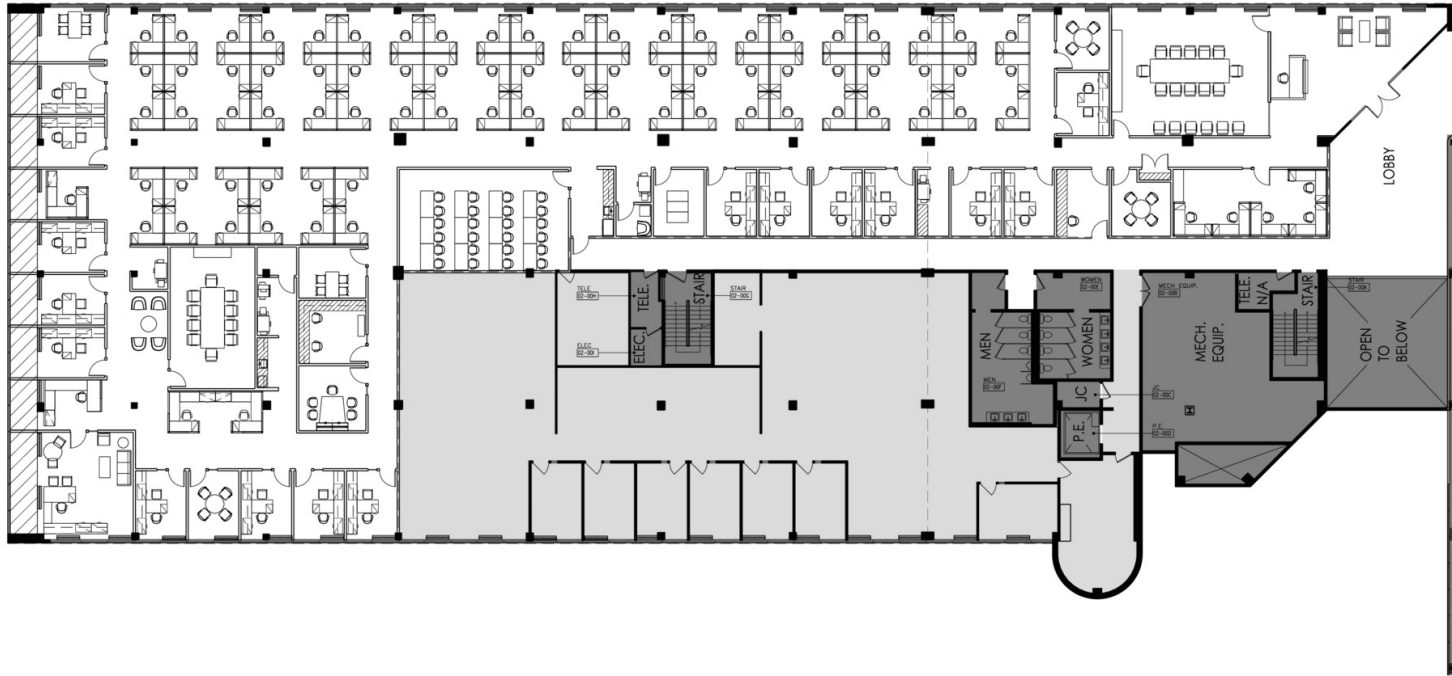
Chris Wittmann **Mike Taylor**
212.752.1041 973.879.8020
cwittmann@lpc.com mtaylor@lpc.com

Lincoln

JERICO PLAZA 1 & 2

Jericho, NY 11753

Jericho Plaza 2 | Partial 3rd Floor



Suite

Jericho Plaza 2 | Partial 3rd Floor

Size

20,771 SF

Description

Highly improved built office space

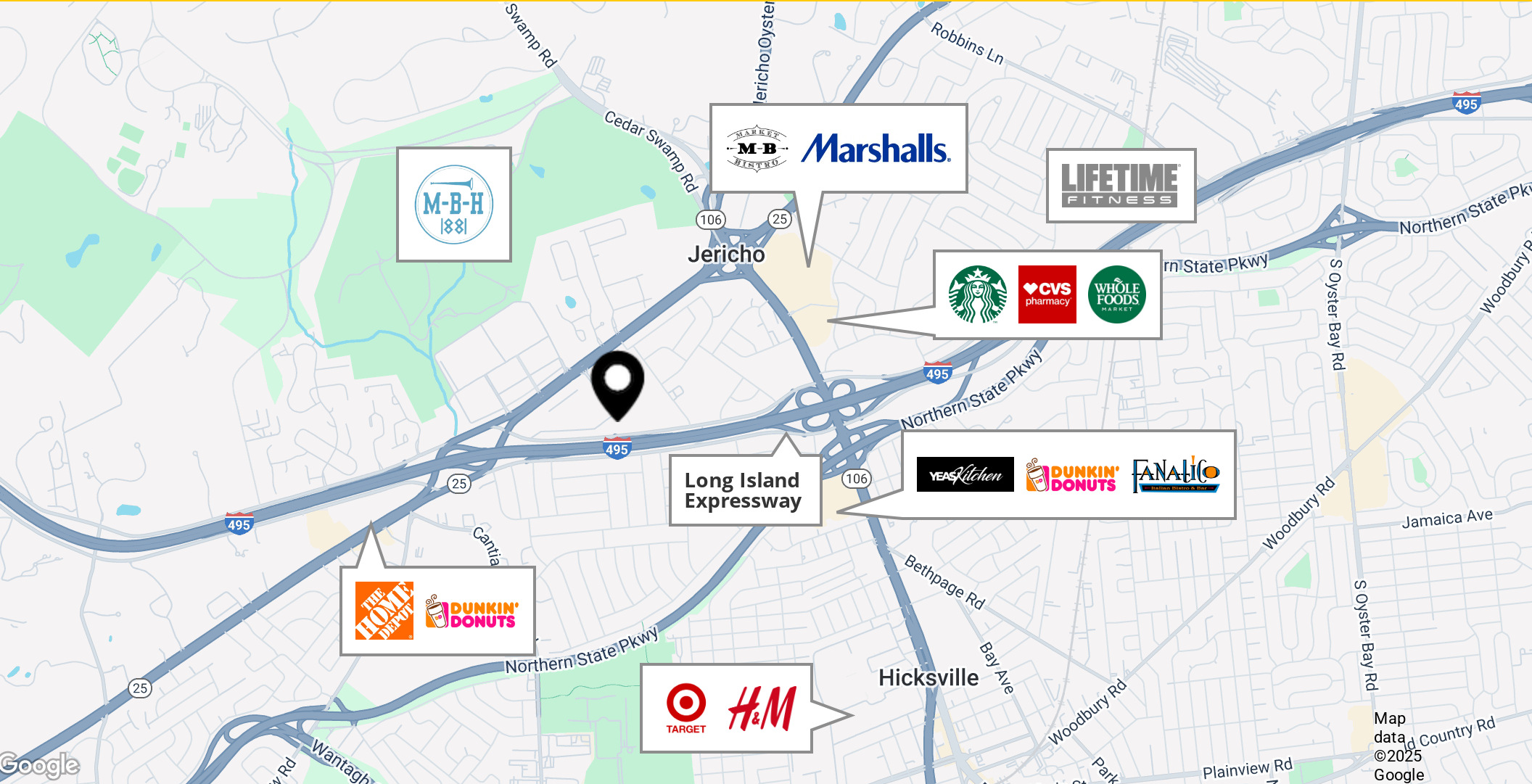
Chris Wittmann **Mike Taylor**
 212.752.1041 973.879.8020
 cwittmann@lpc.com mtaylor@lpc.com

Lincoln

JERICHO PLAZA 1 & 2

Location Map
937,040 SF

Jericho, NY 11753



Chris Wittmann Mike Taylor
212.752.1041 973.879.8020
cwittmann@lpc.com mtaylor@lpc.com

Lincoln



JERICO PLAZA 1 & 2

Jericho, NY 11753

Leasing Information: 212.752.1041

Chris Wittmann
212.752.1041
cwittmann@lpc.com

Mike Taylor
973.879.8020
mtaylor@lpc.com

Lincoln

Lincoln Property Company
500 Fifth Avenue, Floor 57
New York, NY 10110

www.lpc.com