

# 1 W. ELM ST.

CONSHOHOCKEN | PA



## EXCEPTIONAL SUBLEASE OPPORTUNITY IN THE HEART OF CONSHOHOCKEN

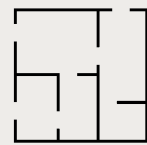
±40,671 (DIVISIBLE TO ±20,000 RSF)

SUBLEASE TERM: 1/31/2032

### HIGHLIGHTS



FULLY  
FURNISHED



DYNAMIC MOVE-IN  
READY SPACE



TRUE PLUG  
& PLAY



HIGH END  
FINISHES

FOR MORE INFORMATION, PLEASE CONTACT:

**KIM FINNERTY**  
610-772-2007  
Kim.Finnerty@cushwake.com

**JEFF BARKER**  
610-772-2006  
Jeff.Barker@cushwake.com

