



Because every working day matters

Park Street

111 Park Street, London W1K 7JF

LANDMARK

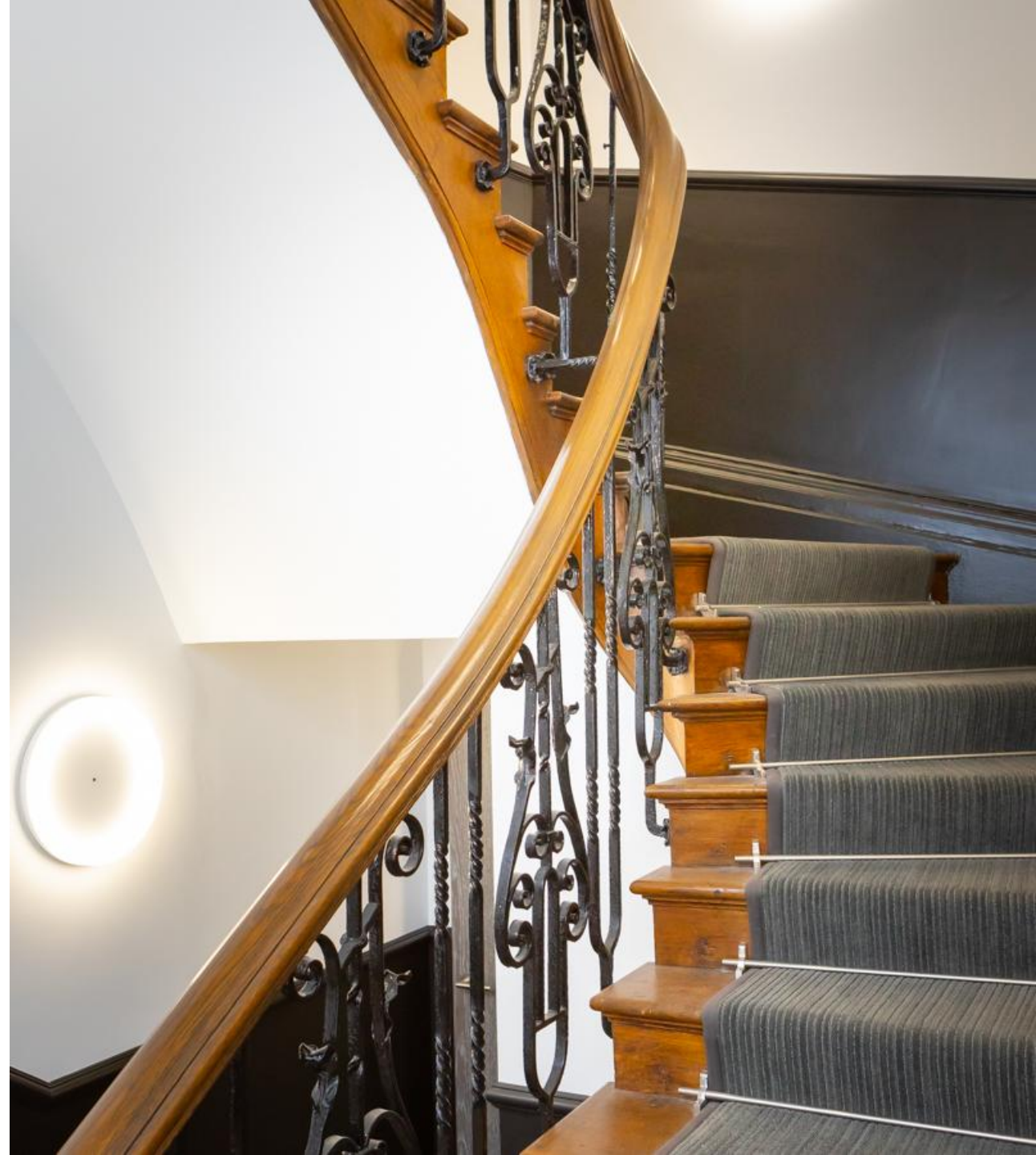
flexible workspace

the space

Landmark Park Street is a contemporary office building in the heart of Mayfair with excellent commuter access.

The fully serviced and furnished offices would suit any business.

There are spacious break-out areas allowing you to network as never before, as well as a professionally trained on-site team to handle your every need.





Welcome to Park Street

"I'm Muvi, your Client Experience Manager at Park Street. We can't wait to welcome you to our beautiful offices, meeting rooms, and flexible workspace at this convenient location. All the team are excited about helping your business make the most of our organised and productive workspace. Welcome to Landmark."

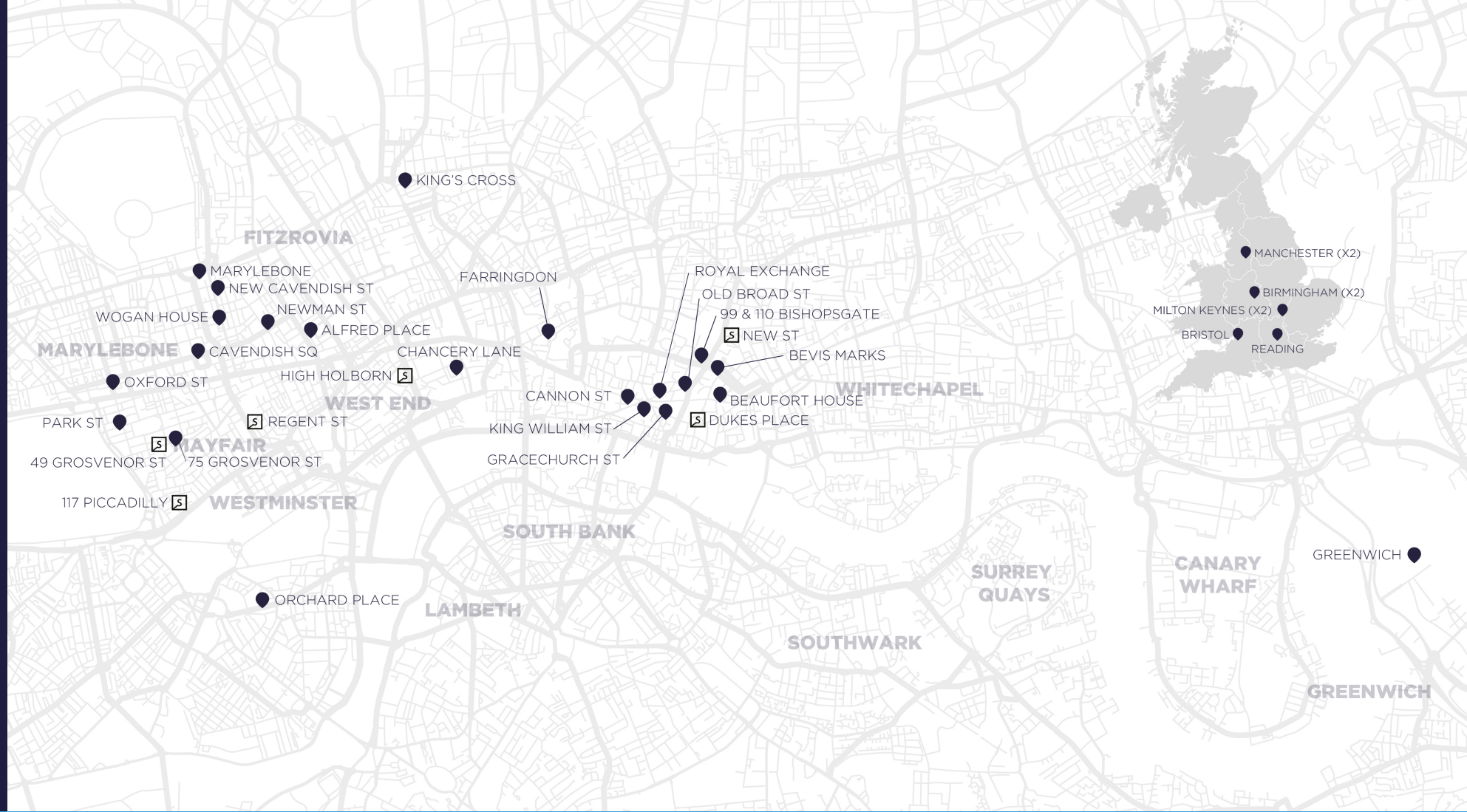
View the virtual tour

"The staff in reception are great, they know exactly where everything is and are always there for anything you need!"

Cathryn McSwiggan, Landmark client at Park Street



Park Street
is one of
37 prime
locations
across
London and
the UK.



111 Park Street,
 London W1K 7JL



Bike
 facilities



Shower
 facilities



Marble Arch
 3 minutes' walk



Bond Street
 7 minutes' walk



Oxford Circus
 14 minutes' walk



Marylebone
 17 minutes' walk



Lower Ground - Indicative floor plans



Located in the heart of the West End, this beautiful period building projects elegance, prestige and style after a comprehensive refurbishment.

The private offices enjoy plenty of natural light and there's a welcoming courtyard and terrace. The building offers approximately 200 workstations across six floors (11,000 sq ft).

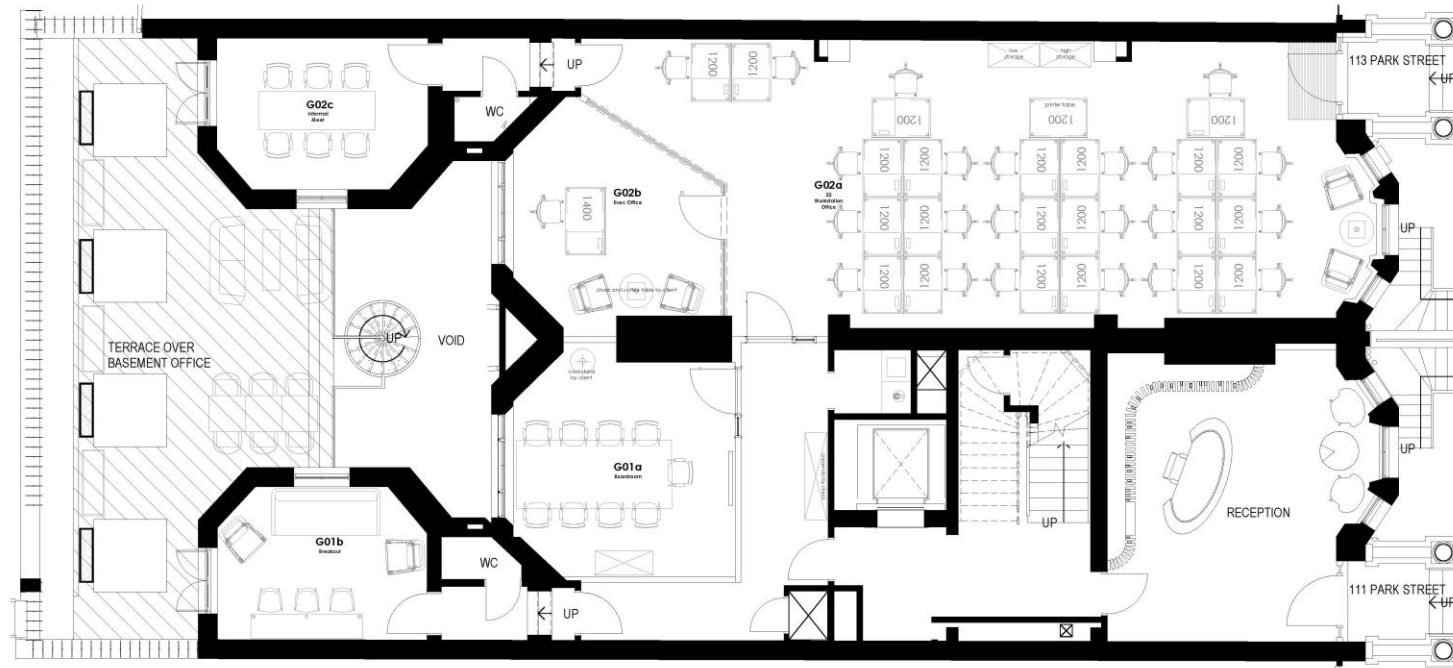
[View the virtual tour](#)



LANDMARK

flexible workspace

111 Park Street Ground Floor



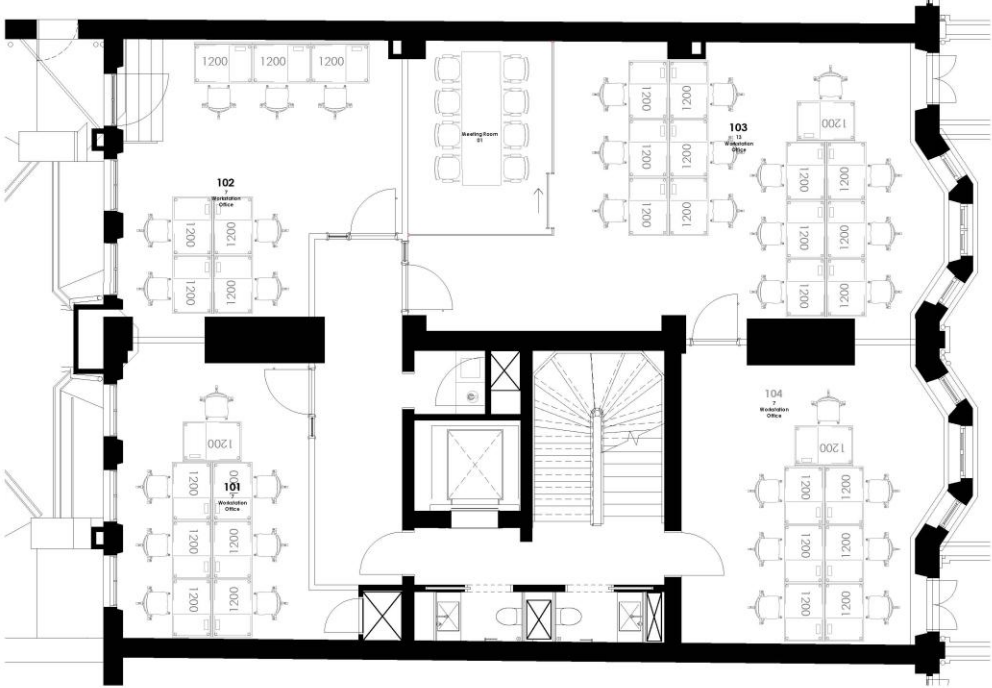
Indicative floor plan

LANDMARK

flexible workspace

111 Park Street

First Floor

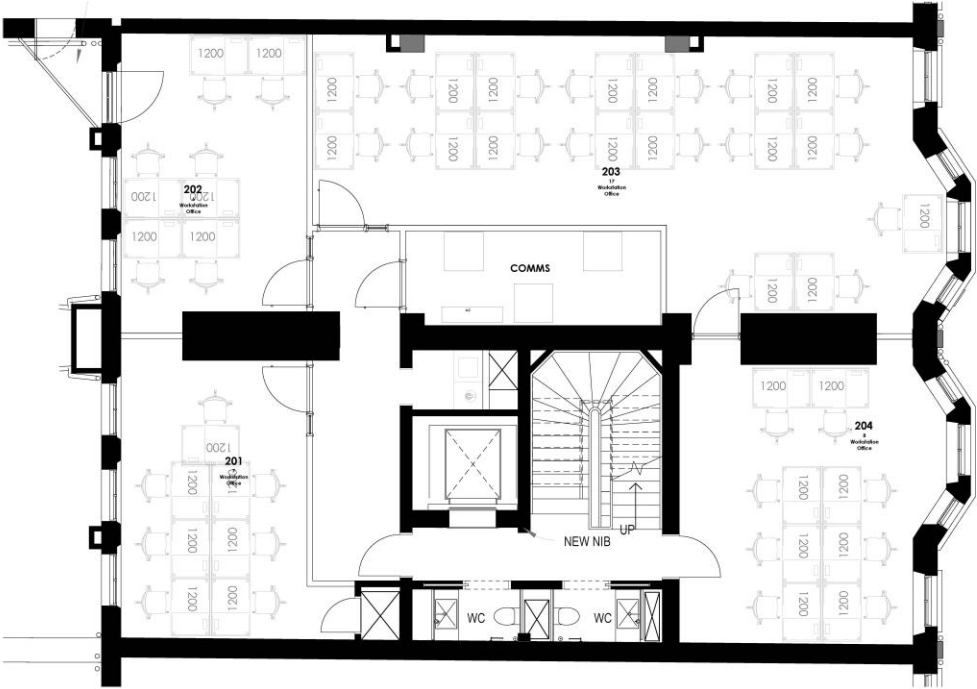


Indicative floor plan

LANDMARK

flexible workspace

111 Park Street Second Floor



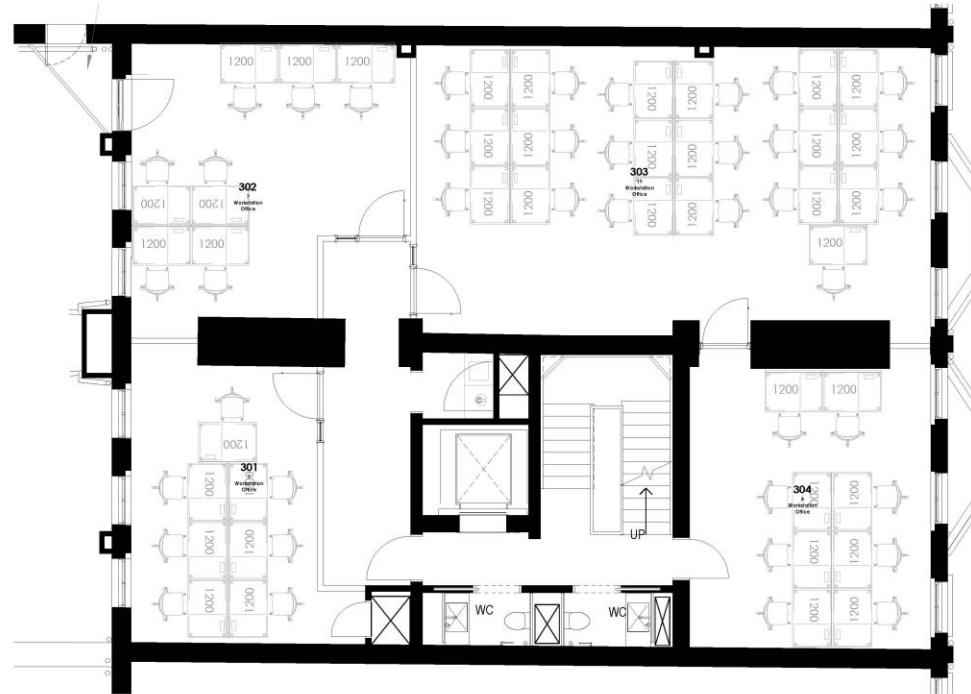
Indicative floor plan

LANDMARK

flexible workspace

111 Park Street

Third Floor

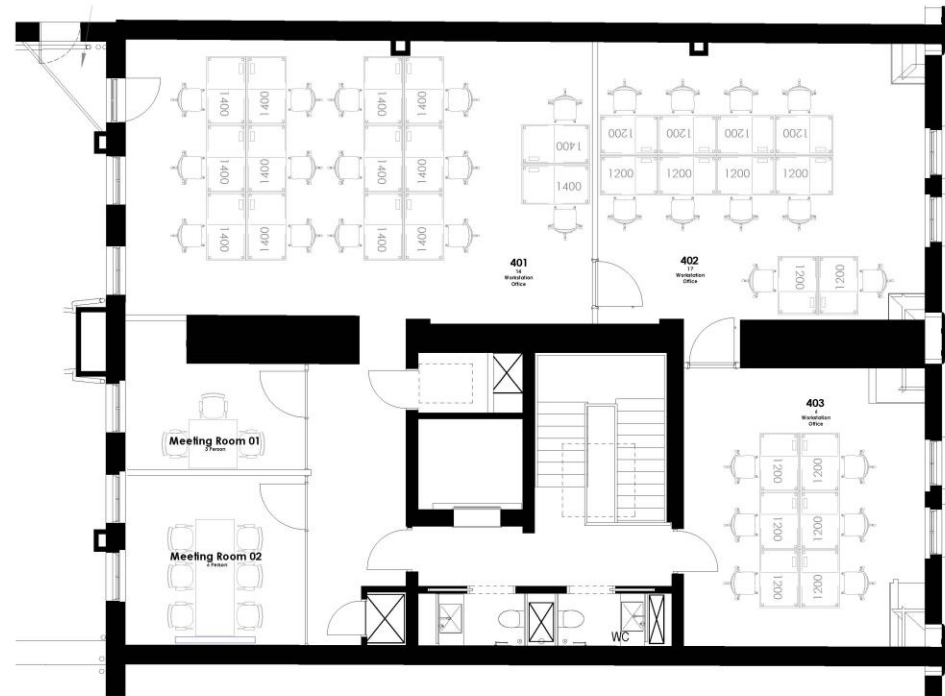


Indicative floor plan

LANDMARK

flexible workspace

111 Park Street
Fourth Floor



Indicative floor plan





Get in touch

Mariarita Milazzo

Area General Manager, West End London

+44 (0) 2034 405 000

enquiries@landmarkspace.co.uk

landmarkspace.co.uk