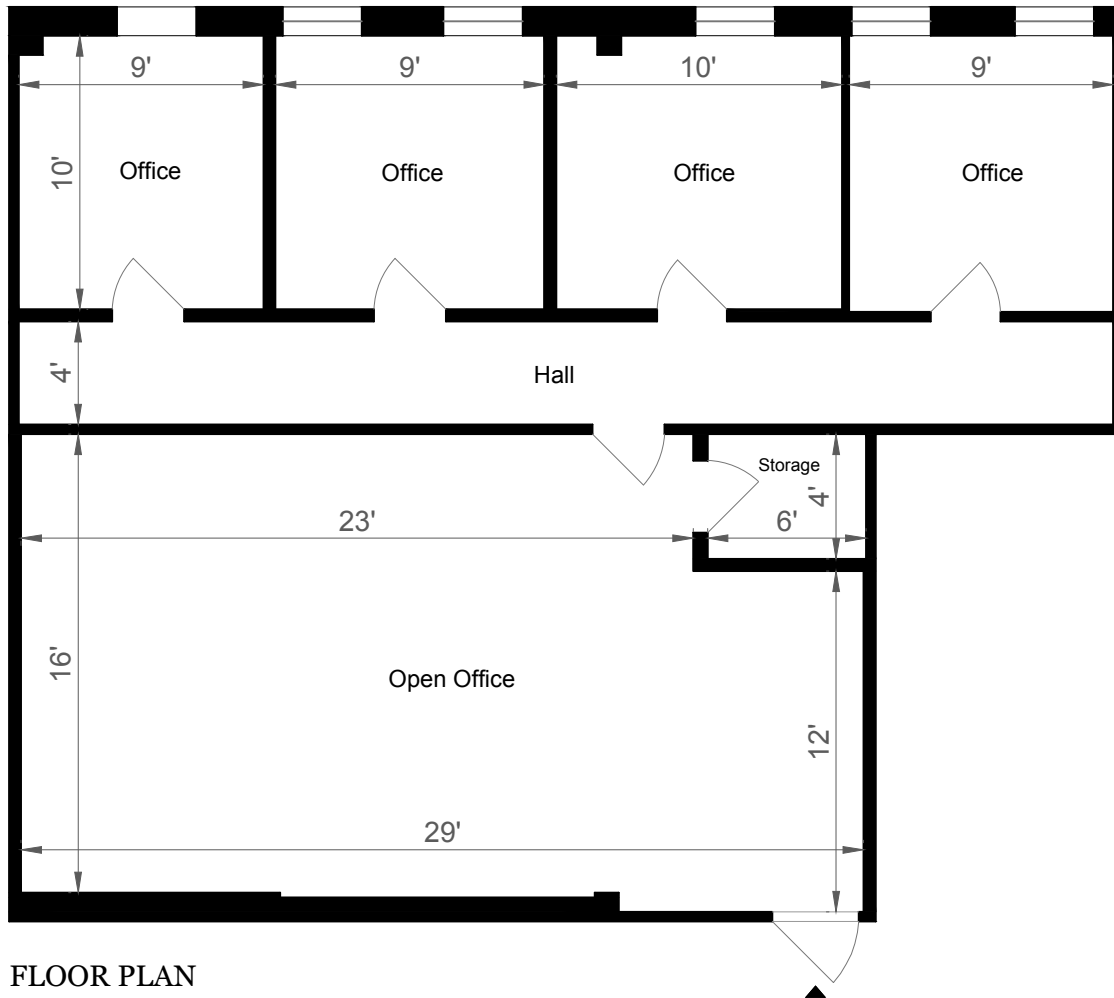


7411 RIGGS ROAD | UNIT 416

HYATTSVILLE, MD 20783



FLOOR PLAN

**Estimated Total
Square Footage: 1,065 SQ FT**

*Calculated from outside face of exterior walls and
center line of demising walls.*

Core Factor: 16,74%

*Total Rentable Square Footage: 1,240 SQ FT

