

CHARTER

BUILDING

THE HILL OF RUBISLAW



Charter Building.
Open For Business at
the Hill of Rubislaw.

Welcome to your amenity packed new office
including pre installed high speed internet

Modern, flexible office space to let from 170 sq ft - to 54,000 sq ft

charterbuilding.co.uk
AB15 6FZ



AMENITIES



A New Way of Working

Join a great customer line-up already enjoying the benefits of being located at the Hill of Rubislaw.

Our space is flexible and can be configured for small or large companies. We can also offer refurbished space with high-speed internet ready to go.

Being located at Charter Building also gives occupants access to amenities across the Hill of Rubislaw including a state-of-the-art Pure Gym and café facilities.



Health and Fitness

Pure Gym offers Charter Building occupiers 15,000 sq ft of up-to-the-minute health facilities and fitness equipment.



Café @ H1, the Hill of Rubislaw

Meet, relax and refuel. Serving breakfast, lunch, teas, coffees, snacks – and corporate catering – the Café @ H1 is a four-minute stroll from your desk.



The Ideal Place for Businesses to Flourish



Create the Perfect Work-Life Balance

A PRIME LOCATION

Sited in the heart of Aberdeen's West End office corridor, this modern complex sits on Anderson Drive (A90), the city's main arterial route, and is close to the Rubislaw Quarry landmark.

For new occupiers, Charter Building will offer a choice of office accommodation, superb transport links, unrivalled parking and a host of dedicated business and catering amenities on the doorstep. So if you're in the market for a great business location, you've found the right place.

WHAT'S ON OFFER

Flexible Options for Occupiers

Flexible, modern refurbished offices available from only 170 sq ft up to 54,000 sq ft with **pre installed high speed internet available**.

Generous Parking

Offered to Charter Building's customers at 1:317 sq ft.

Sited for Success

Only one mile from the city centre and six miles from Aberdeen Airport.

Head Online for a Virtual Visit

Want to look around? Be our guest. Take the tour today at charterbuilding.co.uk

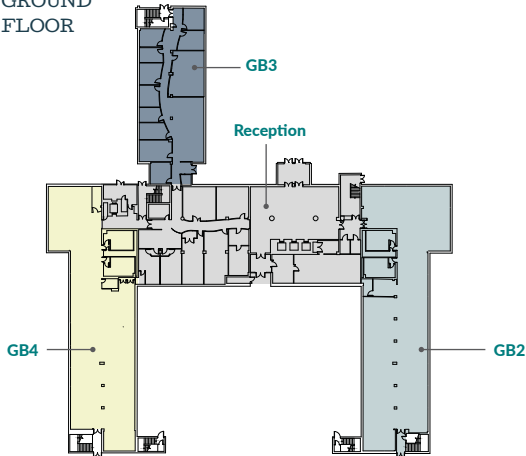
OFFICE SPECIFICATION

- Refurbished modern reception with touch down working stations
- Open plan refurbished offices with air conditioning and LED lighting
- Refurbished toilets
- Building amenities including cycling facilities and showers
- Flexible lease terms
- Suites available with existing meeting rooms for minimal Capital Expenditure on entry
- Pre installed high speed internet available
- Market leading car parking ratio

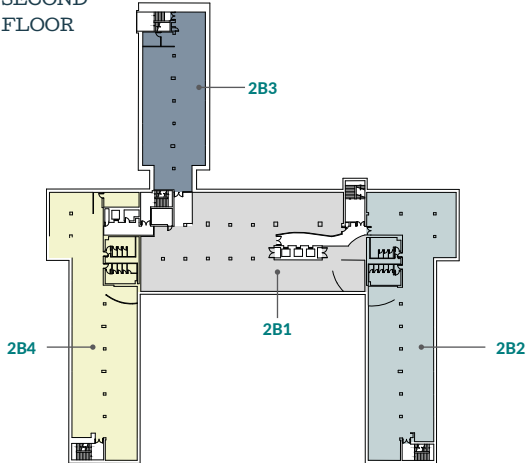




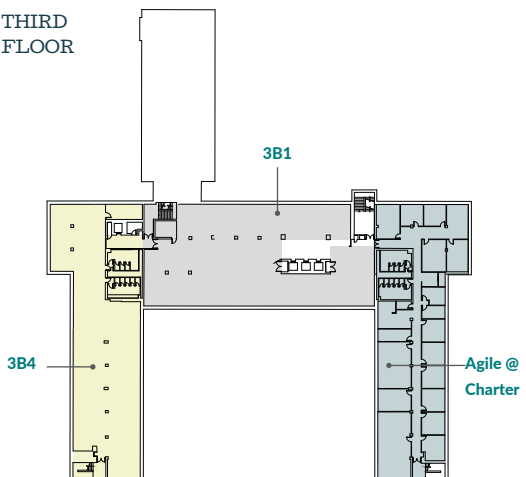
GROUND FLOOR



SECOND FLOOR



THIRD FLOOR



AVAILABLE SPACE



Ground Floor

| | | |
|-------------------------------|-------------------|---------------------|
| Reception & Common Facilities | - | - |
| GB2 | 563 sq.m | 6,055 sq.ft |
| GB3 | 357 sq.m | 3,838 sq.ft |
| GB4 | 502 sq.m | 5,402 sq.ft |
| | 1,422 sq.m | 15,295 sq.ft |

Second Floor

| | | |
|------------|-------------------|---------------------|
| 2B1 | 619 sq.m | 6,665 sq.ft |
| 2B2 | 563 sq.m | 6,054 sq.ft |
| 2B3 | 334 sq.m | 3,595 sq.ft |
| 2B4 | 549 sq.m | 5,908 sq.ft |
| | 2,065 sq.m | 22,222 sq.ft |

Note: 2B1, 2B3 and 2B4 can be combined.

Third Floor

| | | |
|-------------------------|-------------------|---------------------|
| 3B1 | 619 sq.m | 6,664 sq.ft |
| 3B4 | 549 sq.m | 5,908 sq.ft |
| Agile @ Charter* | 170-4,000 sq.ft | |
| | 1,539 sq.m | 16,572 sq.ft |

*The accommodation in this suite can be made available on inclusive deals.

Note: 3B1 & 3B4 can be combined.

| | | |
|--------------|-------------------|---------------------|
| TOTAL | 5,026 sq.m | 54,089 sq.ft |
|--------------|-------------------|---------------------|

FIND OUT MORE TODAY

Speak with our agents, about securing your place in Charter Building at the Hill of Rubislaw.



Dan Smith
dan.smith@savills.com
01224 971134



Graeme Nisbet
graeme.nisbet@fgburnett.co.uk
01224 597532

The Charter Building, The Hill of Rubislaw, Anderson Drive, Aberdeen AB15 6FZ
charterbuilding.co.uk

