

Private Lobby.

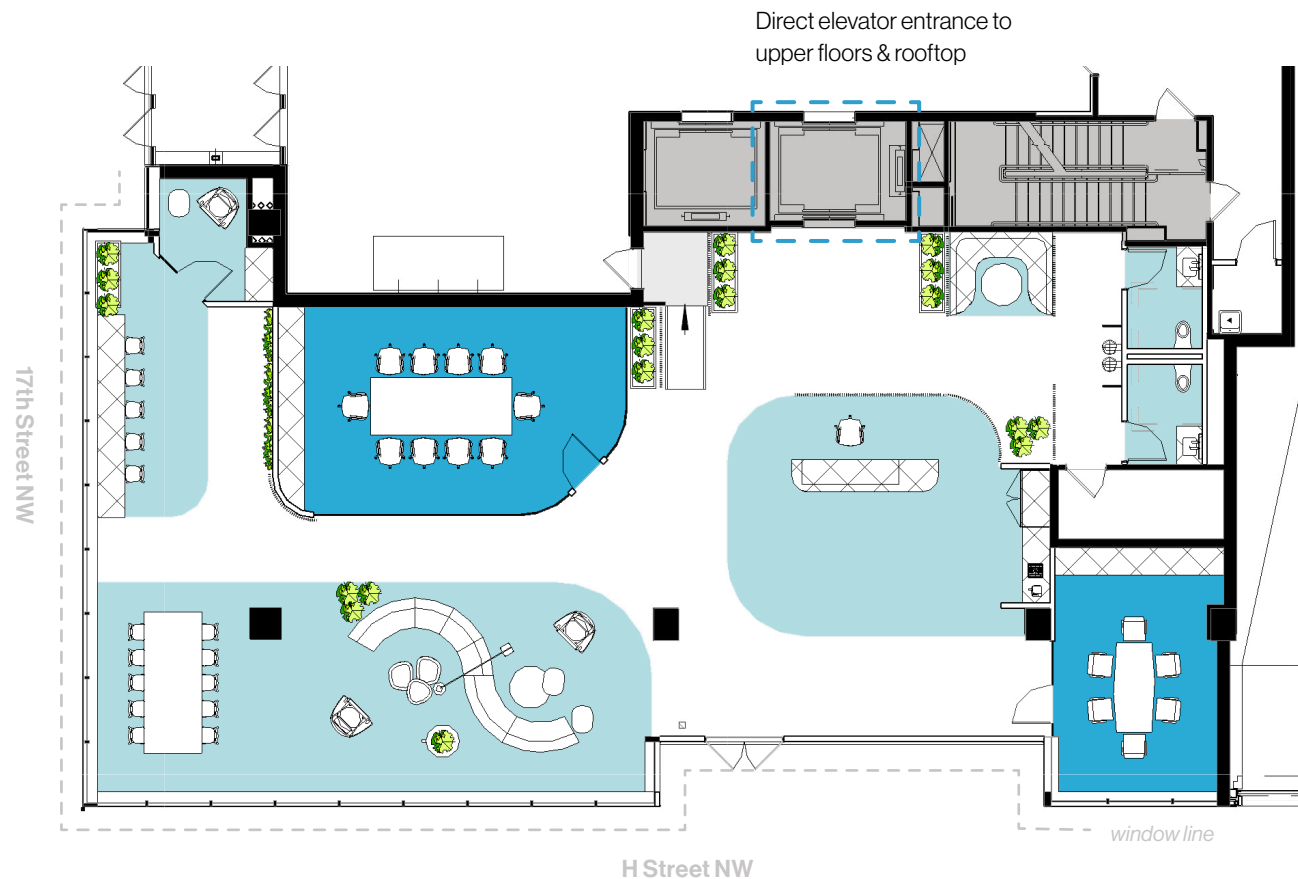
801^{17th}

Ground Floor
4,336 RSF

Ground floor presence
Corner signage opportunity
Slab-to-slab height: 11'2"

[See what's possible](#) ↗

[Explore the building](#) ↗



Penthouse.

801^{17th}

Private Rooftop Opportunity
+ Shared Amenity Space

Private wine storage

Retractable exterior wall

Alternate conferencing layout

[See what's possible](#) ↗

[Explore the building](#) ↗



Conference Center.

801^{17th}

High-Capacity Event/Meeting Space
+ Pre-Function Lounge

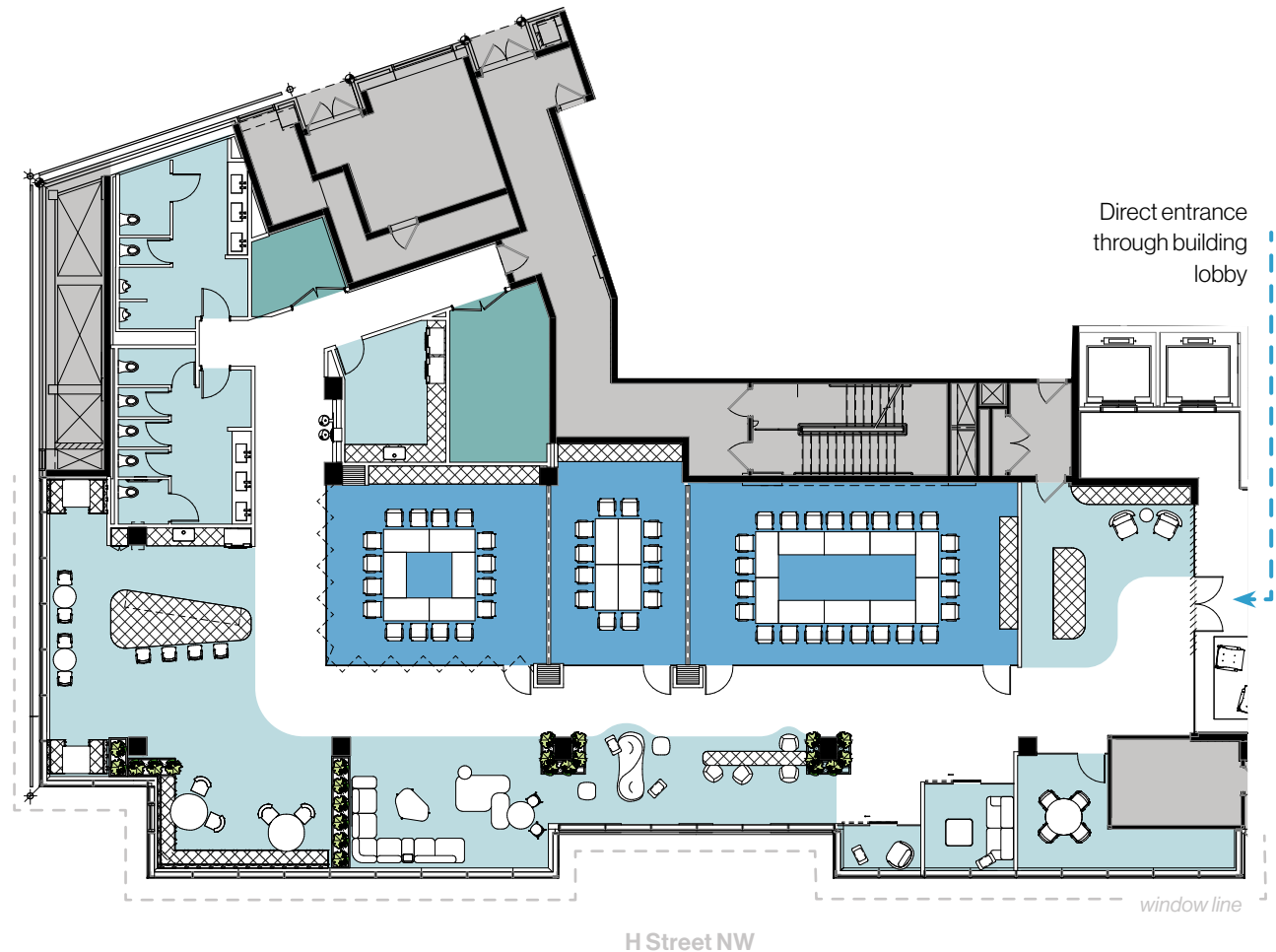
120 seats in classroom layout

416-person event capacity

Retractable interior walls

[See what's possible](#) ↗

[Explore the building](#) ↗



Trophy Top Block.

801^{17th}

Typical Floor (9-11)

23,167 RSF

Up to 37 windowed offices per floor

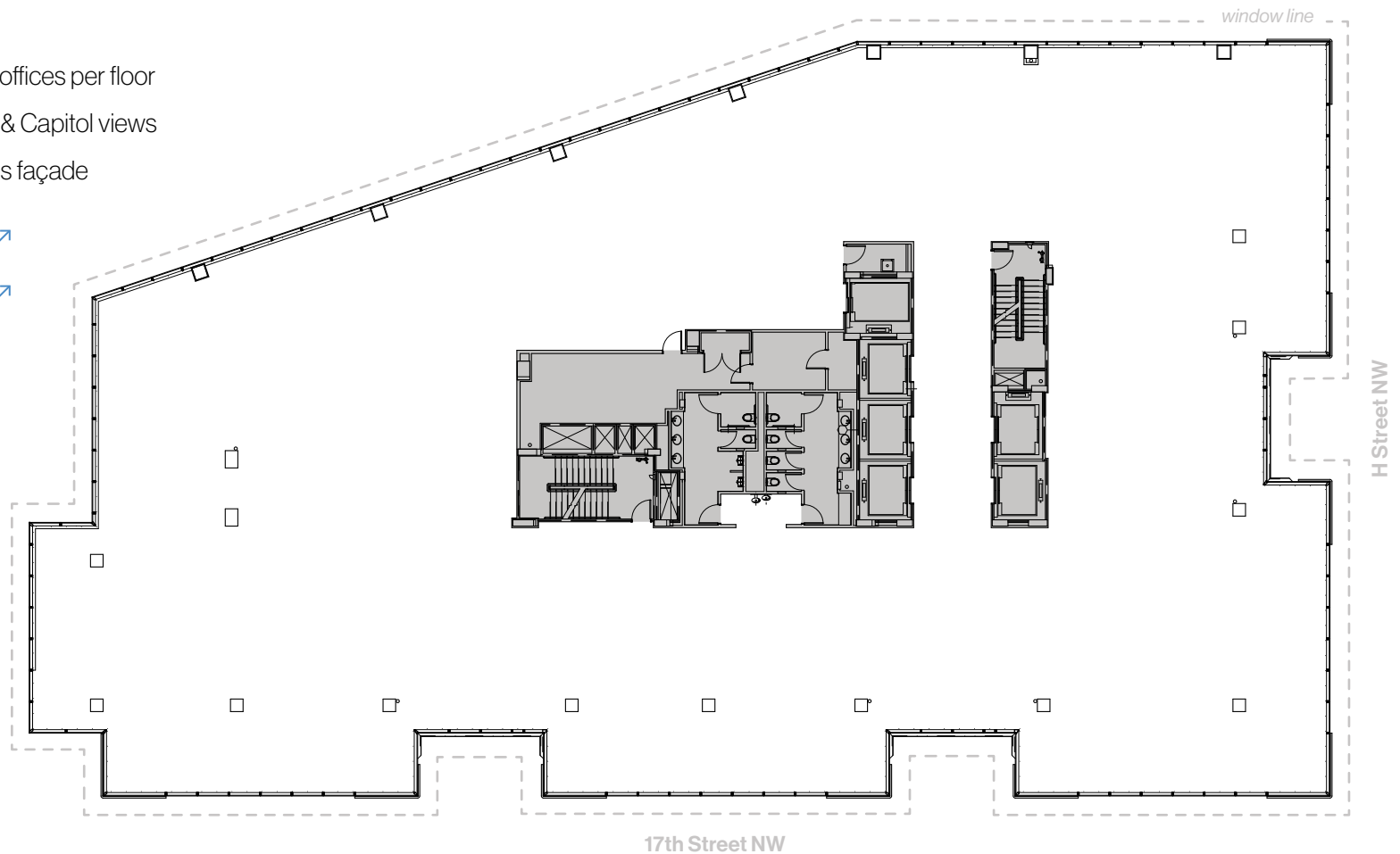
Direct White House & Capitol views

Floor-to-ceiling glass façade

[See what's possible](#)

[Explore the building](#)

White House & Capitol Views ↗



Trophy Top Block.

801 17th

9th Floor

23,348 RSF

White House & Capitol Views ↗

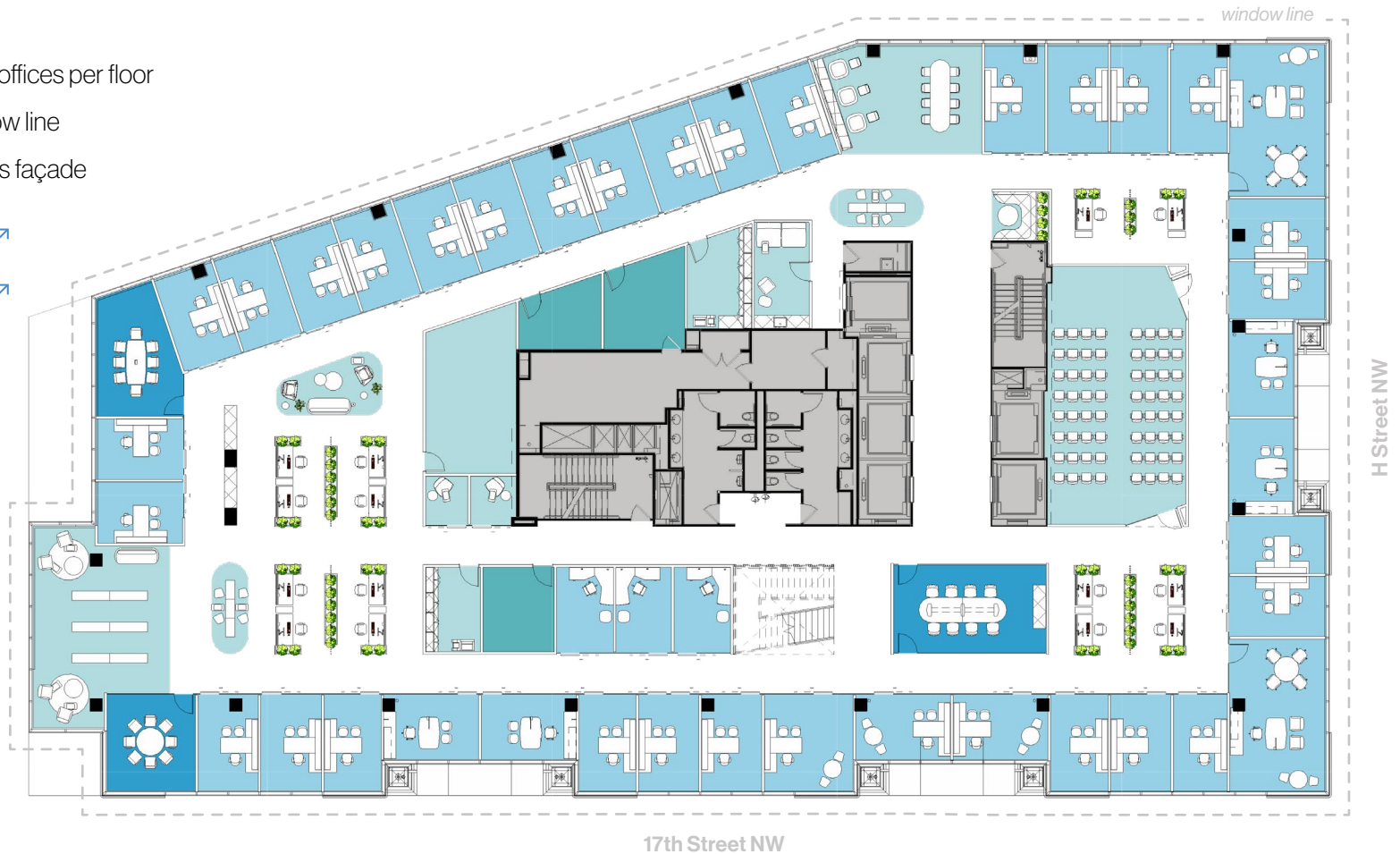
Up to 37 windowed offices per floor

Full perimeter window line

Floor-to-ceiling glass façade

[See what's possible ↗](#)

[Explore the building ↗](#)



Trophy Top Block.

801^{17th}

10th Floor
23,167 RSF

White House & Capitol Views ↗

Up to 37 windowed offices per floor
Full perimeter window line
Floor-to-ceiling glass façade

[See what's possible ↗](#)

[Explore the building ↗](#)



Trophy Top Block.

801^{17th}

11th Floor

23,167 RSF

White House & Capitol Views ↗

Up to 37 windowed offices per floor

Full perimeter window line

Floor-to-ceiling glass façade

[See what's possible ↗](#)

[Explore the building ↗](#)

