

FOR LEASE



1504-1508 S MAIN ST.

LOS ANGELES, CA 90015

LEASE RATE: \$1.50 NNN | **UNIT SIZE:** 2,000-7,000 RENTABLE SF

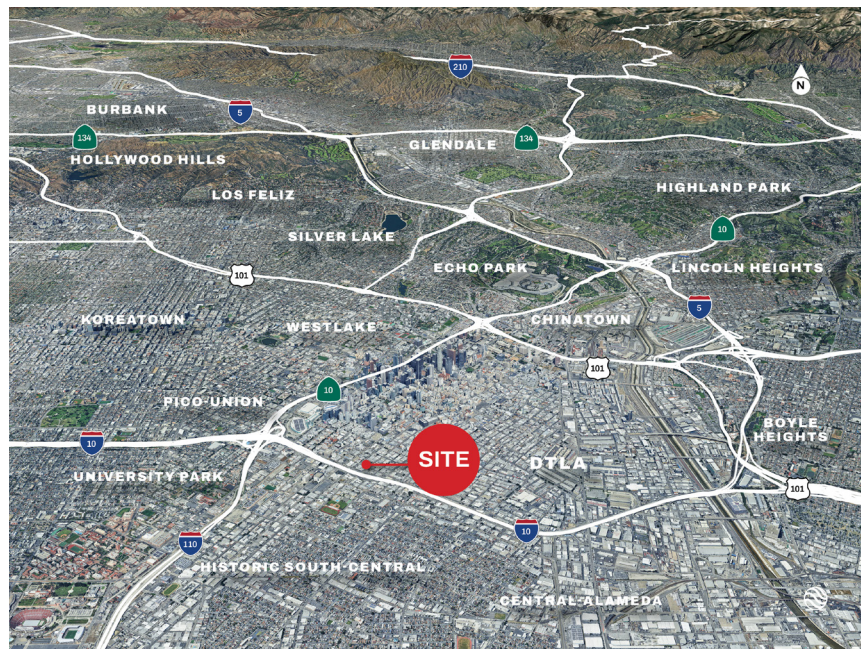
PROPERTY OVERVIEW

1504-1508 S Main St. is a premier retail storefront in Downtown Los Angeles. 1504-1508 S Main St is fenced and secured and offers tenants premium amenities such as 14' warehouse clearance, conveyor belt, renovated office space and restrooms, and entry from both Main St and the Rear Retail Corridor.

The Property is located less than one (1) mile away from the I-10 Freeway.

Description | Uses:

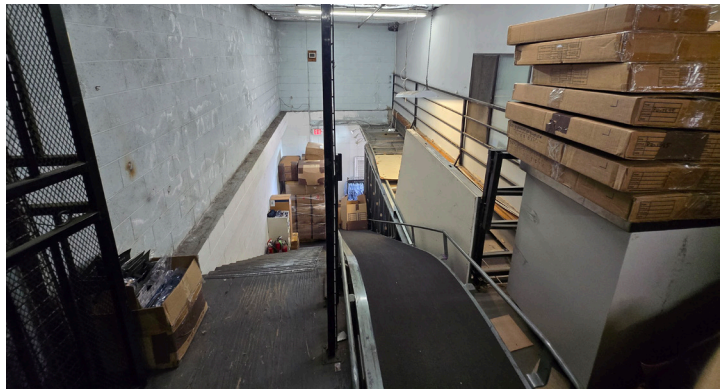
One and two Story Retail Storefront Retail/Office. LA-M2 zoning allows retail/warehouse use, along with numerous other uses.



Ivan K. Hopkins

Senior Associate
d 213.632.7719 m 917.805.3889
ihopkins@naicapital.com
CA Dre #02062490

PROPERTY PHOTOS



Ivan K. Hopkins
Senior Associate
d 213.632.7719 m 917.805.3889
ihopkins@naicapital.com
CA Dre #02062490

NAI Capital
800 S. Figueroa St #925
Los Angeles, CA 90017
213.632.7700
info@naicapital.com

No warranty, express or implied, is made as to the accuracy of the information contained herein. This information is submitted subject to errors, omissions, change of price, rental or other conditions, withdrawal without notice, and is subject to any special listing conditions imposed by our principals. Cooperating brokers, buyers, tenants and other parties who receive this document should not rely on it, but should use it as a starting point of analysis, and should independently confirm the accuracy of the information contained herein through a due diligence review of the books, records, files and documents that constitute reliable sources of the information described herein. NAI Capital CA DRE #02130474

PROPERTY SUMMARY



Address:

1504-1508 S Main St.
Los Angeles, CA 90015

Unit Size:

2,000-7,000
Rentable SF

Lease Rate:

\$1.50 NNN

Lease Term:

TBD

Office Area:

+/-200 SF
+/-500 SF



Loading:

1 Ground Level
Loading Door



Clear Height:

14'0"



Auto Parking:

3 Surface
Parking Spaces



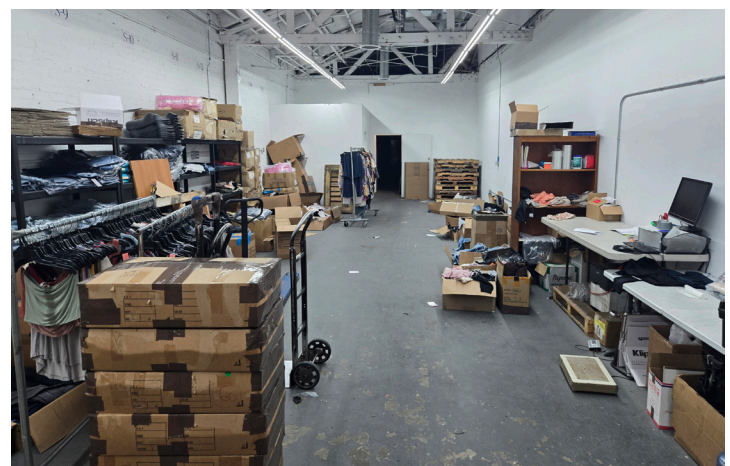
Zoning:

LA County
M2



Amenities:

Conveyor Belt
Front & Rear Access



Ivan K. Hopkins

Senior Associate
d 213.632.7719 m 917.805.3889
ihopkins@naicapital.com
CA Dre #02062490

NAI Capital

800 S. Figueroa St #925
Los Angeles, CA 90017
213.632.7700
info@naicapital.com

No warranty, express or implied, is made as to the accuracy of the information contained herein. This information is submitted subject to errors, omissions, change of price, rental or other conditions, withdrawal without notice, and is subject to any special listing conditions imposed by our principals. Cooperating brokers, buyers, tenants and other parties who receive this document should not rely on it, but should use it as a starting point of analysis, and should independently confirm the accuracy of the information contained herein through a due diligence review of the books, records, files and documents that constitute reliable sources of the information described herein. NAI Capital CA DRE #02130474