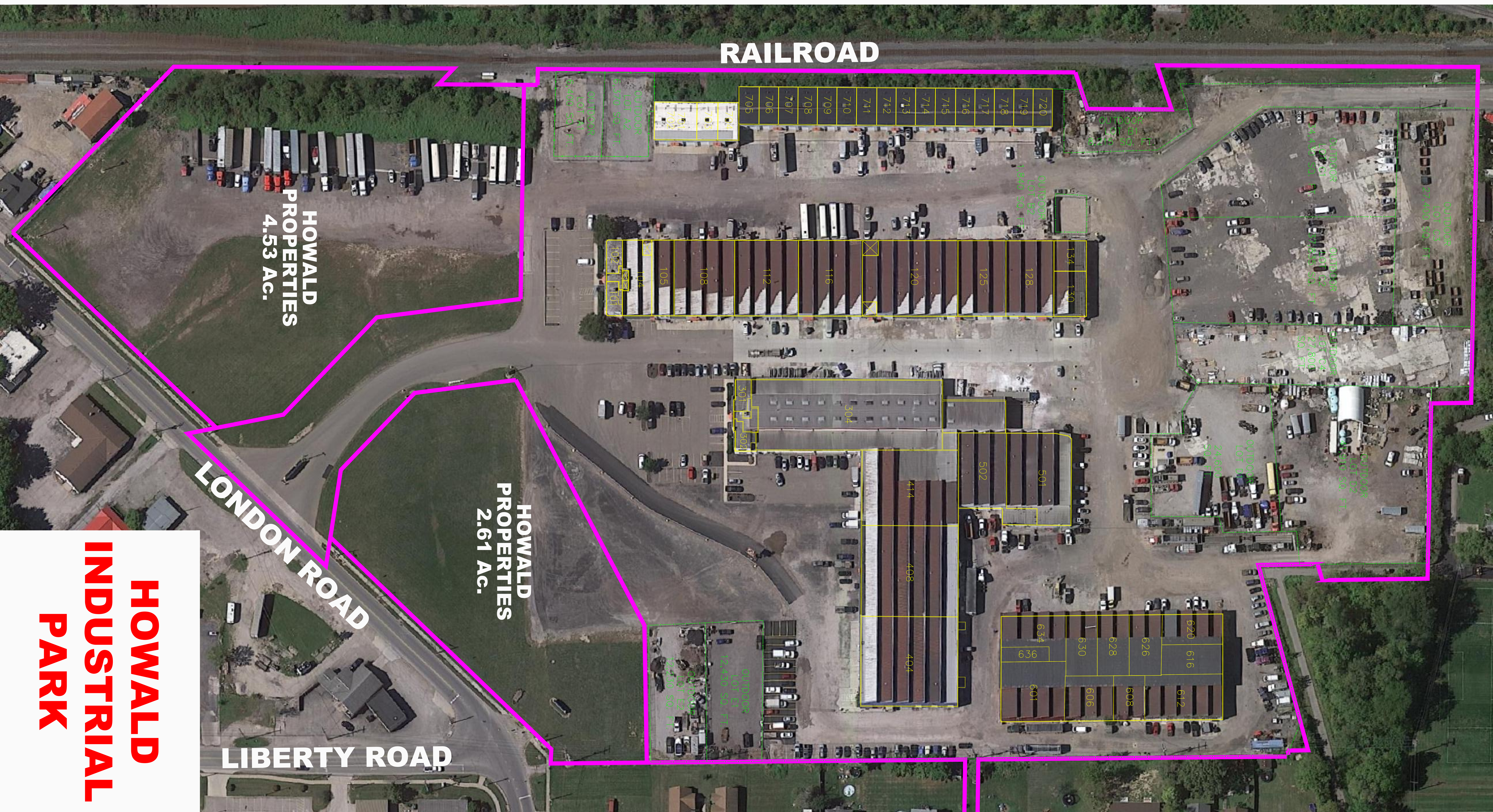


UNIT	SQ. FOOTAGE
101	585 sq. ft.
102	750 sq. ft.
103	2000 sq. ft.
104	2990 sq. ft.
105	2555 sq. ft.
108	7075 sq. ft.
112	7470 sq. ft.
116	7480 sq. ft.
120	10,320 sq. ft.
125	5600 sq. ft.
128	5600 sq. ft.
130	2240 sq. ft.
134	1500 sq. ft.
=====	
301	695 sq. ft.
302	660 sq. ft.
303	2010 sq. ft.
304	20,895 sq. ft.
=====	
404	13,490 sq. ft.
408	13,665 sq. ft.
414	11,295 sq. ft.
=====	
501	8380 sq. ft.
502	6450 sq. ft.
=====	
601	5975 sq. ft.
606	3435 sq. ft.
608	2195 sq. ft.
612	5515 sq. ft.
616	2860 sq. ft.
620	2850 sq. ft.
626	3090 sq. ft.
628	3020 sq. ft.
630	2960 sq. ft.
634	3500 sq. ft.
636	1110 sq. ft.
=====	
UPSTAIRS	15,650 sq. ft.
=====	
701/702	2440 sq. ft.
703	1200 sq. ft.
704	1190 sq. ft.
705	1150 sq. ft.
706	1110 sq. ft.
707	1110 sq. ft.
708	1110 sq. ft.
709	1110 sq. ft.
710	1120 sq. ft.
711	1155 sq. ft.
712	1100 sq. ft.
713	1110 sq. ft.
714	1120 sq. ft.
715	1160 sq. ft.
716	1100 sq. ft.
717	1105 sq. ft.
718	1110 sq. ft.
719	1100 sq. ft.
720	1100 sq. ft.



RAILROAD

**HOWALD PROPERTIES
4.53 AC.**

**HOWALD PROPERTIES
2.61 AC.**

LONDON ROAD

LIBERTY ROAD

HOWALD INDUSTRIAL PARK