



BV BONNEVILLE
LABS

PCR

BSC

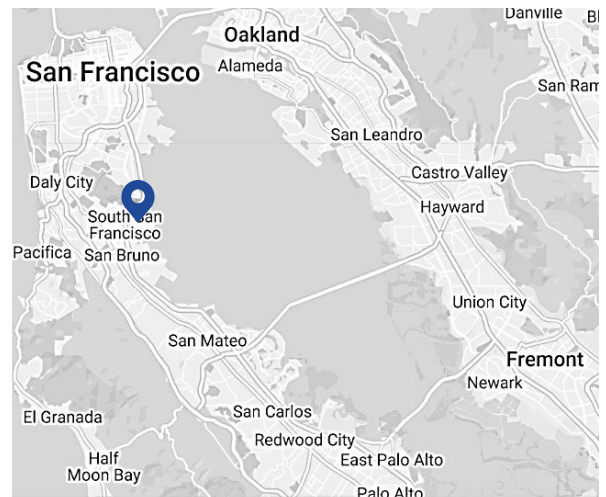
SDS

The Empowering Solution

- ✓ Flex-Office and Lab Space
- ✓ Flexible Membership Options
- ✓ Access to Lab Equipment
- ✓ Purchasing Assistance
- ✓ Lab Operational Services
- ✓ An Enabling Community
- ✓ IT & EH&S Support

South San Francisco | 750 Gateway Blvd

Bonneville Labs is a flexible coworking lab space optimized for a community of Bio-Doers, emerging biotechnology companies, community partners, and life science market leaders.



GO FORWARD, FASTER.

South San Francisco, CA

WHY BONNEVILLE LABS

- ✓ Easy commute options (on/off-freeway and public transportation access)
- ✓ Membership options matched to your needs
- ✓ Bio-Community/network
- ✓ Learn through the Technical Series, Educational Seminars and Bonneville Labs Mentor Network
- ✓ VC and Investor Connections



SERVICES



LAB SPACE & EQUIPMENT

With flexible lab space, equipment and infrastructure, members can work like larger organizations at a fraction of the cost. When it's time to grow, larger dedicated suites are just down the hall. Getting off the ground has never been easier.



LAB OPERATIONS SUPPORT

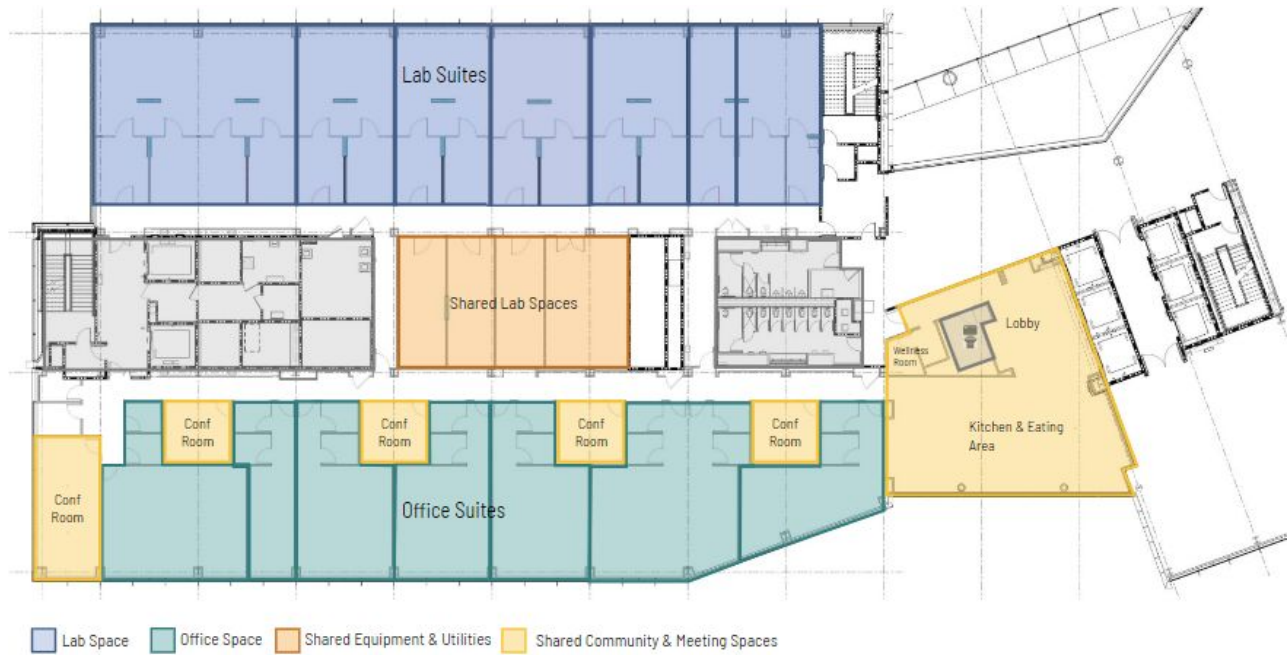
Bonneville Labs assists members with crucial matters such as Environmental Health & Safety oversight and training, waste pickup, and much more, saving members money and time in the process.



OFFICE AMENITIES & COMMUNITY

Growing, agile teams shouldn't have to worry about the setup and maintenance of traditional office infrastructure. They should focus on their science, and connecting with other innovators working in similar fields.

FACILITY



WHAT YOU GET

AVAILABLE SERVICES

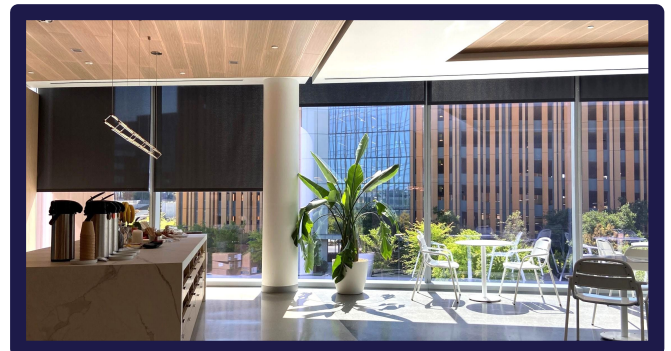
- ✔ Lab Equipment Setup, Training, & Space Planning
- ✔ 24/7 On Call Services and Facilities Support
- ✔ Available Storage Spaces
- ✔ Limited Flammable & Corrosive Storage
- ✔ Cold Store Monitoring
- ✔ Shipping and Receiving
- ✔ Stock Room and Receiving Chemical Management
- ✔ Gas Inventory
- ✔ Oxygen Monitoring System
- ✔ IT Support
- ✔ Coffee, Tea, Sparkling Water & Refreshments

EH&S SUPPORT

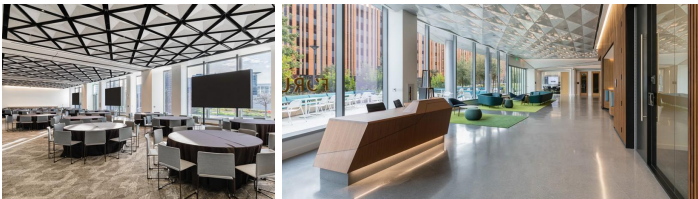
- ✔ Pre-Inspection Guidance and Training
- ✔ Safety Committee Meetings
- ✔ CERS Reporting Assistance
- ✔ Lab Coats Provided and Laundered
- ✔ Equipment Earthquake Proofing

JOIN THE COMMUNITY

In the Heart of
the Birthplace of Biotech



AMENITY HIGHLIGHT



TR~~A~~VERSE

Experience modern luxury and sophistication at Traverse!

The amenity center, located in the heart of Gateway of Pacific, offers a range of personalized culinary, fitness, and community experiences to make you feel empowered and connected.

Additionally, Traverse is LEED® Platinum certified and earned a Fitwel 2 Star Rating, ensuring a workplace environment that enhances occupant health, wellness, and productivity.

SQUARE FOOTAGE

±50,000

AMENITIES

Bar and Restaurant
Food Hall
Meeting Spaces
Spa & Health Club
Multi-Functional Indoor-Outdoor Areas

F~~O~~RUM

Elevate your event to the next level with Forum – the premier conference center that provides exceptional meeting and gathering space for tenants!

With 20,000 square feet of ground-level space in the Gateway of Pacific Phase II building, Forum can easily accommodate up to 450 people in an auditorium seating arrangement, complete with state-of-the-art audio-visual systems.

Forum offers unparalleled flexibility with sub-dividable spaces that can adapt to smaller meetings of up to 130 people, so you can customize your space to fit your needs. And with stunning open spaces for pre- and post- function use, Forum provides the ideal venue for your next event.

SQUARE FOOTAGE

±20,000

AMENITIES

450 person conference room
board room
huddle rooms
Multi-function space uses
Leed Gold and Fitwel 2 Star
certifications

Included in Membership **No Additional Cost**

Infrastructure and Site Amenities

- IT network infrastructure including:
 - Redundant fiber internet
 - Firewall, powered switches, and wireless access points
- Common printer/copier and secure paper shredding
- Wellness room
- Showers stocked with shampoo, conditioner & towel service provided at Traverse
- Kitchen & café equipped with:
 - Refrigerator, microwave, toaster, dishwasher, espresso & coffee maker
 - Snack and beverage program
- Conference spaces with A/V teleconferencing hardware.
- Access to FORUM and Traverse event spaces (additional fees may apply).
- Access to Cove App that integrates with on-site amenities and events to enhance our tenants' experiences
- Back-up power generators for all shared equipment
- Secure bicycle storage
- Loading dock & freight elevator

High-touch Service & Support

- Professionally managed, full-service operations staff including Site Support and EH&S managers and community personnel
- Client & guest services desk
- Networking and educational events/lunch and learns throughout the year
- Shipping and receiving processing services
- Vendor & contractor management
- 24/7 security and emergency response
- Base building repair & maintenance
- Janitorial, waste and recycling service
- Personal Protective Equipment: lab coat and cleaning,
- Environmental Health & Safety compliance, trainings, and support
- Permitting (Biosafety, Wastewater, EPA ID, and Flammable Liquids & Solvents)
- Hazardous waste management
- Glass-washing and autoclave service
- Staffed 24x7 security/emergency response
- Consumables support: liquid nitrogen, CO2, wet ice, dry ice, vacuum, compressed air, and RODI water

Equipment Included in Base Membership - No Extra Charge



1st sleeve free

-80C PHCbi VIP Series
Ultra-Low Temperature Freezer



1st ½ shelf free

-20C American BioTech Supply
Manual Defrost Laboratory Freezer



1st shelf free

4C Laboratory Refrigerator



1st box free

Thermo Cryogenic Freezer
Locator JR Plus



Glassware Washer / Dryer



Autoclave



Elga PURELAB Flex 2 Polisher



Ice Machine



Dry Ice

Equipment Included in Shared Equipment Tier 1 Membership

Members can instantly reserve equipment online. Access is first-come-first-serve and not guaranteed.



Esco AIRSTREAM RELIANT 4 Ft Class II Type A2 Biological Safety Cabinet



Cell-IQ Series 5.8 ct. ft. CO2 Laboratory Incubator



Applied Biosystems QuantStudio 5 Real-Time PCR System



Varioskan LUX Multimode Microplate Reader



iBright FL1500 Imaging System



SpectraMax iD3 Multi-Mode Microplate Reader



NanoDrop OneC Microvolume UV-Vis Spectrophotometer



MiniAmp Plus Thermal Cycler



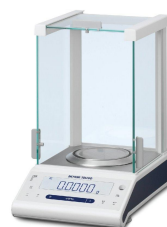
Nikon Eclipse TE 2000-S Phase Contrast Polarization Fluorescence Inverted Microscope



Bio-Rad C1000 Touch Thermal Cycler



Sorvall X4R Pro-MD Centrifuge



Analytical Balance



Fisherbrand Accumet AB150 pH meter

Equipment Included in Shared Equipment Tier 2 Membership - hourly rate

Access is subject to availability.



NovoCyte Quanteon Flow Cytometer
Located at BVL - Gateway of Pacific location



BioTek Cytation 5 Cell Imaging Multimode Reader
Located at BVL - Gateway of Pacific location

Equipment Available for Private Rental



Heratherm 180L AP Incubator Advanced Protocol Microbiological Oven



Esco AIRSTREAM
RELIANT 4 Ft Class II
Type A2 Biological Safety Cabinet



Cell-iQ Series 5.8 ct. ft.
CO2 Laboratory Incubator



4C Laboratory Refrigerator



-20C American BioTech Supply
Manual Defrost Laboratory Freezer



-80C PHCbi VIP Series
Ultra-Low Temperature Freezer