

FOR SUBLEASE

INDUSTRIAL WAREHOUSE

1930 WATSON WAY
VISTA, CA 92081



SULLIVAN O'BRIEN

sobrien@voitco.com

(858) 602.2894

Lic #02219481

Voit

REAL ESTATE SERVICES

Suite C Availability

1,560 SF
SF Available

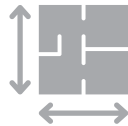
\$1.45/SF/MG + CAM
Asking Rate

Feb 28, 2029
Master Lease Expires

BUILDING SPECIFICATIONS



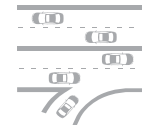
25,359 SF
Total Building Size



2.00 Acres
Land Size



3.05/1,000 SF
Parking Ratio



Close Freeway Proximity
Hwy-78



3p Heavy
Power



16'
Clear Height



Retail Amenities
Close By

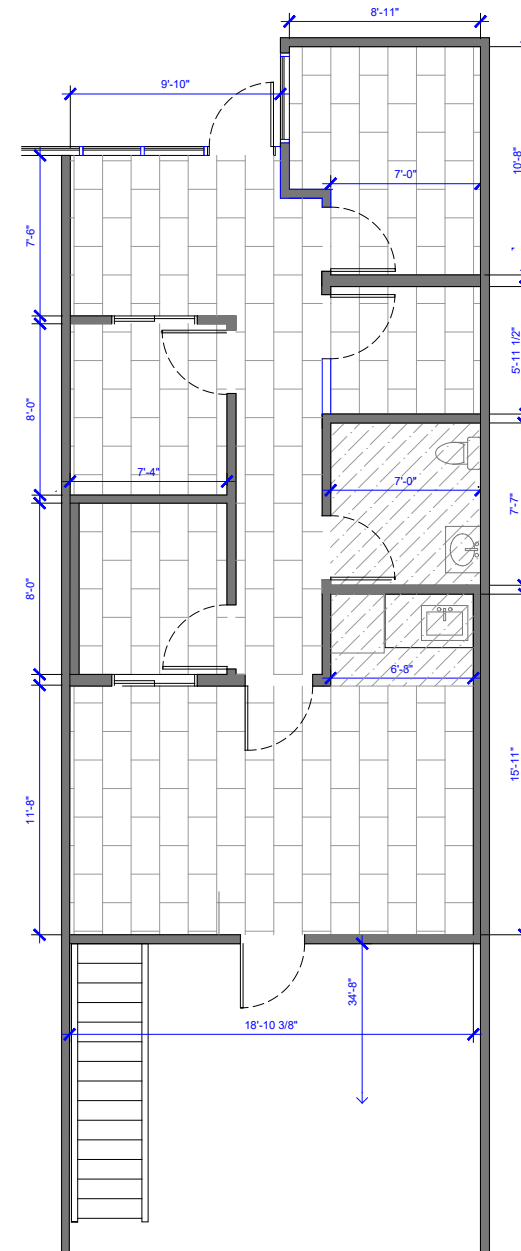


GL Door

FLOOR PLAN

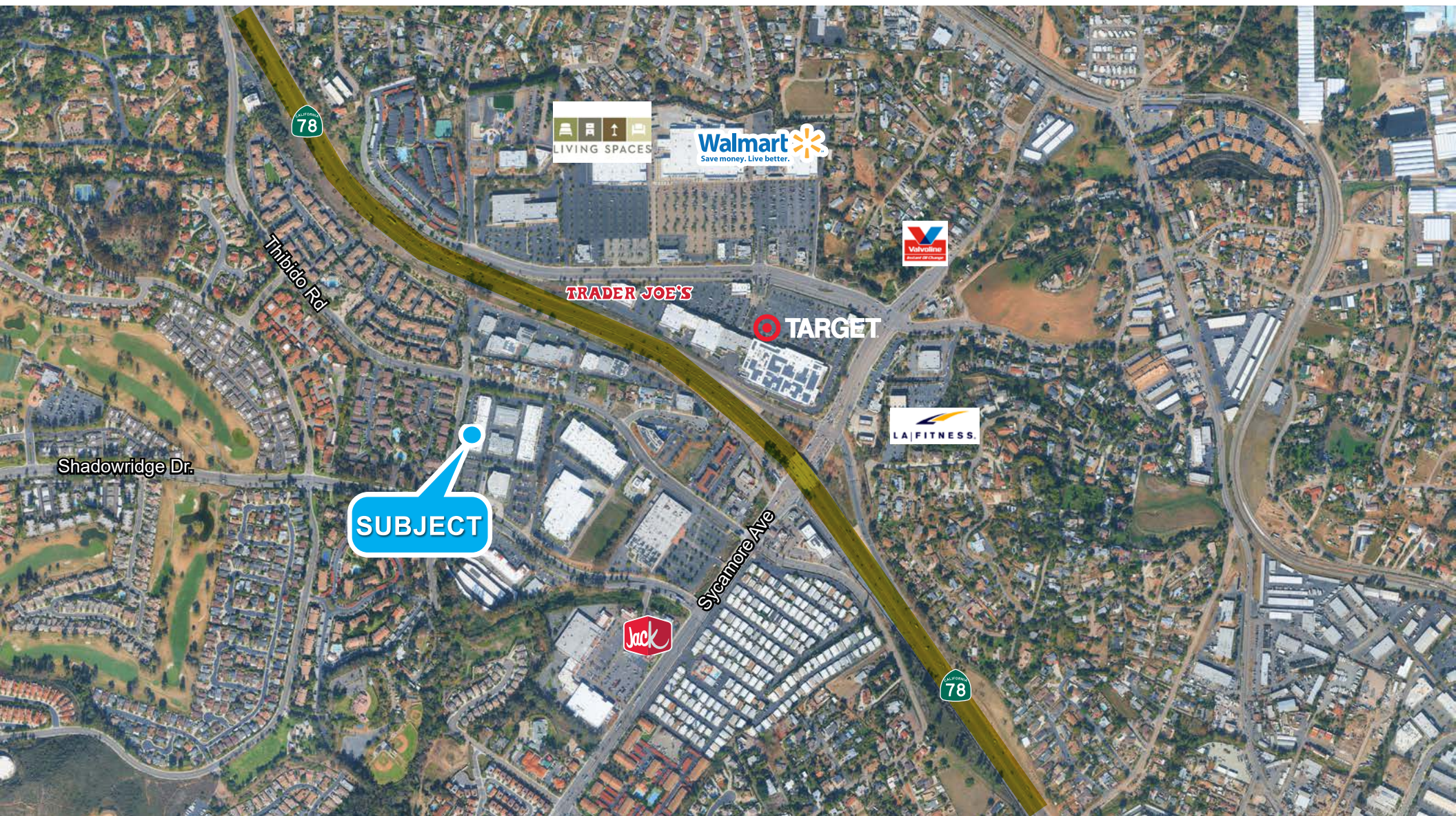
SUITE C

- 1,560 SF
- 272 SF of Bonus Mezzanine not included in square footage
- 50% office / 50% warehouse
- Four (4) private offices
- Reception
- Conference room
- Kitchenette
- Private bathroom



**Brand New Office Improvements*





SUBJECT

SULLIVAN O'BRIEN

sobrien@voitco.com

(858) 602.2894

Lic #02219481

Voit
REAL ESTATE SERVICES

4180 La Jolla Village Drive, Suite 100, La Jolla, CA 92037 | 858.453.0505 858.408.3976 Fax | Lic #01991785 | www.voitco.com

Licensed as Real Estate Salespersons by the DRE. The information contained herein has been obtained from sources we deem reliable. While we have no reason to doubt its accuracy, we do not guarantee it. ©2026 Voit Real Estate Services. All Rights Reserved.