

MEDICAL OFFICE BUILDING

2001 E. 4TH STREET

Santa Ana, CA 92705

AVAILABLE FOR LEASE

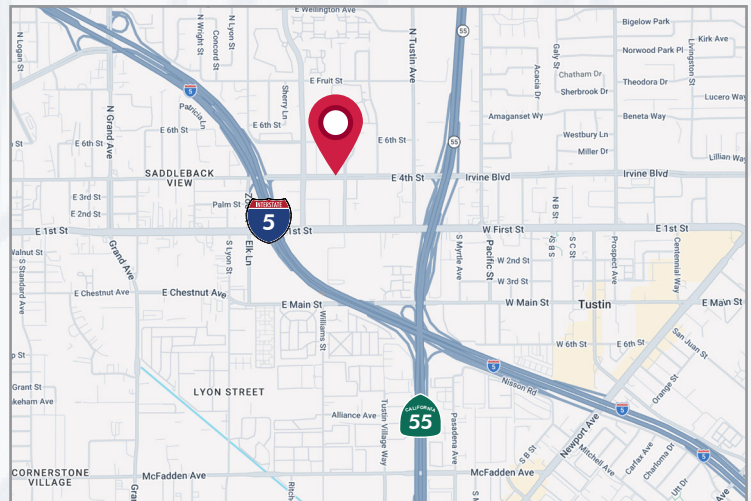


AVAILABILITY

Suite	Type	Size	Lease Rate
210	Medical/Office	525 SF	\$1.85 FSG
220	Medical/Office	1,052 SF	\$1.85 FSG

PROJECT HIGHLIGHTS

- Corner unit property with E. 4th Street visibility
- Short distance to St. Joseph Medical Facility and Orange County Medical Center
- 2-story medical and office building
- Located near residential and commercial area
- Turn key improvements and available for long term lease deals
- On-site property management team
- Elevator served
- Excellent access to the 405, 5 and 55 Freeways



CONTACT



Mia Pham
Senior Vice President
CalBRE 01875144
949.790.3129
mpham@leeirvine.com



Eric Darnell
Senior Vice President
CalBRE 01888743
949.790.3157
edarnell@leeirvine.com



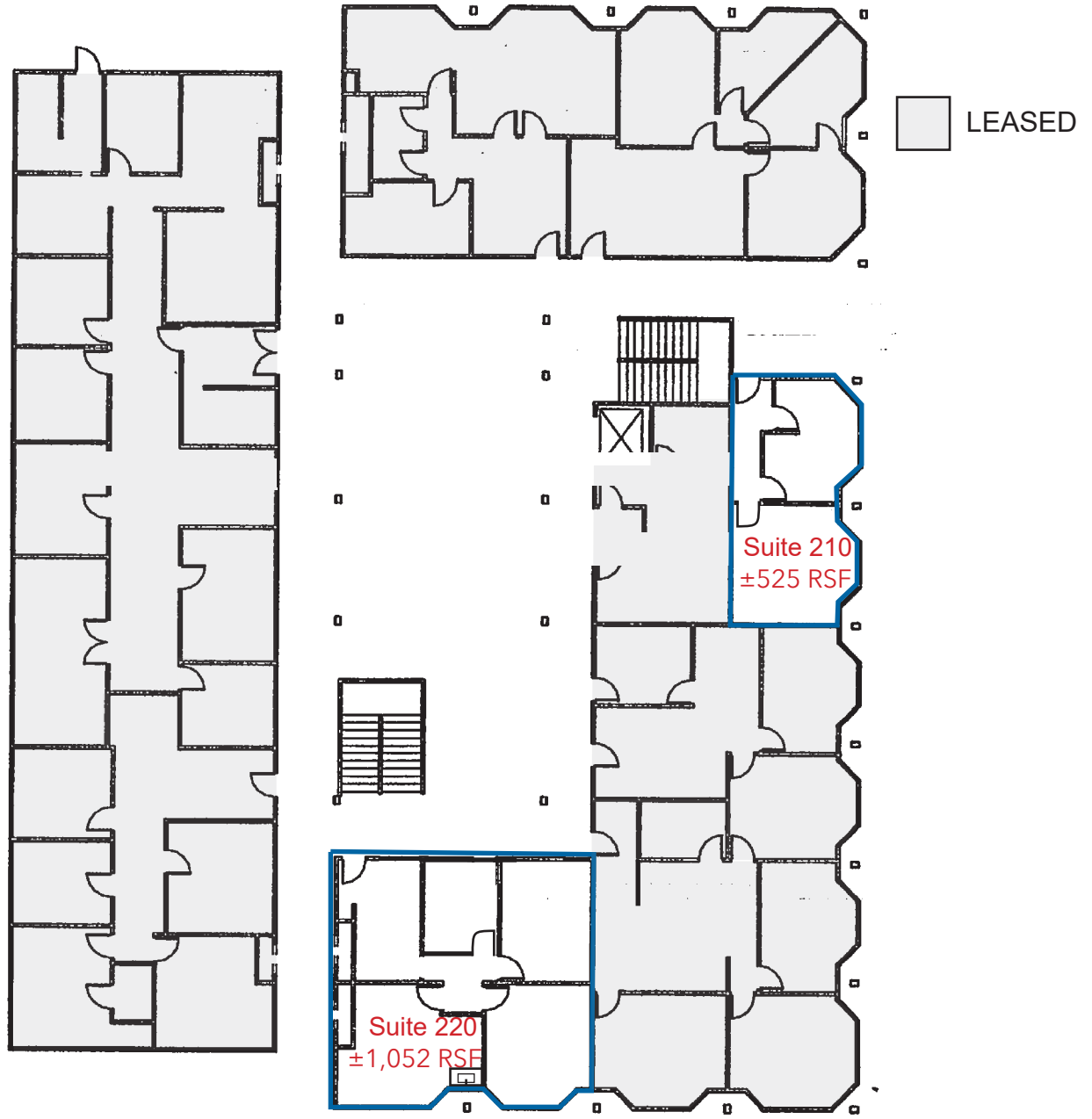
COMMERCIAL REAL ESTATE SERVICES

No warranty or representation is made to the accuracy of the foregoing information. Terms of sale or lease and availability are subject to change or withdrawal without notice.

2001 E. 4TH STREET

Santa Ana, CA 92705

Floor Plan - Second Floor



CONTACT



Mia Pham
Senior Vice President
CalBRE 01875144
949.790.3129
mpham@leeirvine.com



Eric Darnell
Senior Vice President
CalBRE 01888743
949.790.3157
edarnell@leeirvine.com

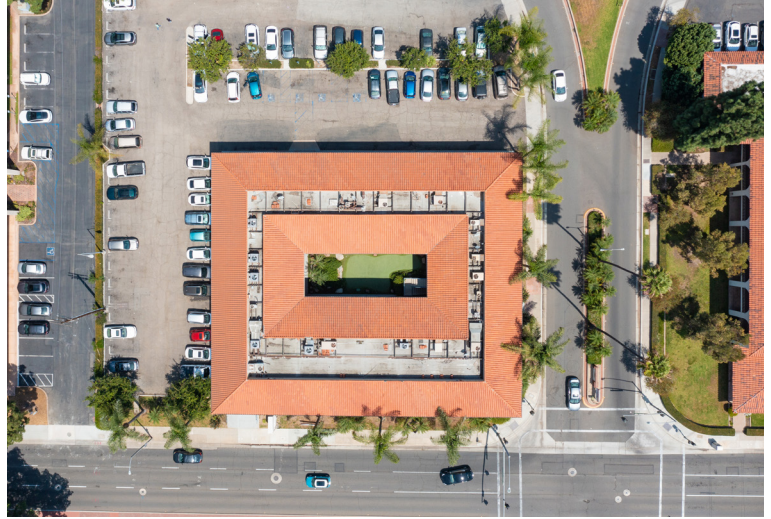


COMMERCIAL REAL ESTATE SERVICES
No warranty or representation is made to the accuracy of the foregoing information. Terms of sale or lease and availability are subject to change or withdrawal without notice.

2001 E. 4TH STREET

Santa Ana, CA 92705

Photographs



CONTACT



Mia Pham
Senior Vice President
CalBRE 01875144
949.790.3129
mpham@leeirvine.com



Eric Darnell
Senior Vice President
CalBRE 01888743
949.790.3157
edarnell@leeirvine.com



COMMERCIAL REAL ESTATE SERVICES
No warranty or representation is made to the accuracy of the foregoing information. Terms of sale or lease and availability are subject to change or withdrawal without notice.