



# 290 10th Street N.

Stress-free all-inclusive fees, convenient on-site parking, including internet, storage, and multiple configurations.

## Downtown Offices

— up to 4,000 ft<sup>2</sup> —

We have single offices and sectioned groups of offices available at hassle-free flat fees. Property maintenance and care are included in fees. On-site internet, storage, and parking in additional to optional furnishings.

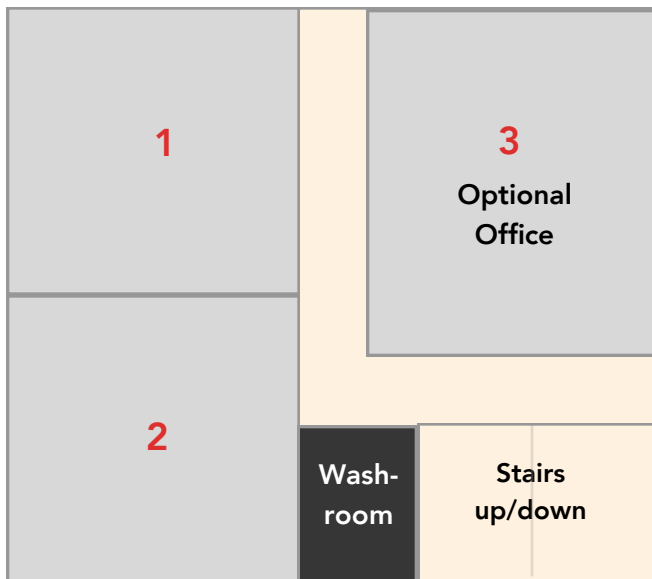
### Pricing (all-inclusive)

Offices starting \$450/month  
Large offices \$550/month

### Primary Features & Amenities

- Flat rental fees includes utilities, maintenance, and management.
- On-site parking and plenty of street parking.
- Individual and groups of offices available.
- Large windows with plenty of natural light.
- Various room configurations available.
- Plenty of on-site storage.
- Optional furnishings.
- Video camera & security system.

# LOWER LEVEL



**Room 1 { 13 x 13 ft}**

**Room 2 { 13 x 13 ft}**

**Room 3 { 18 x 12.5 ft}**

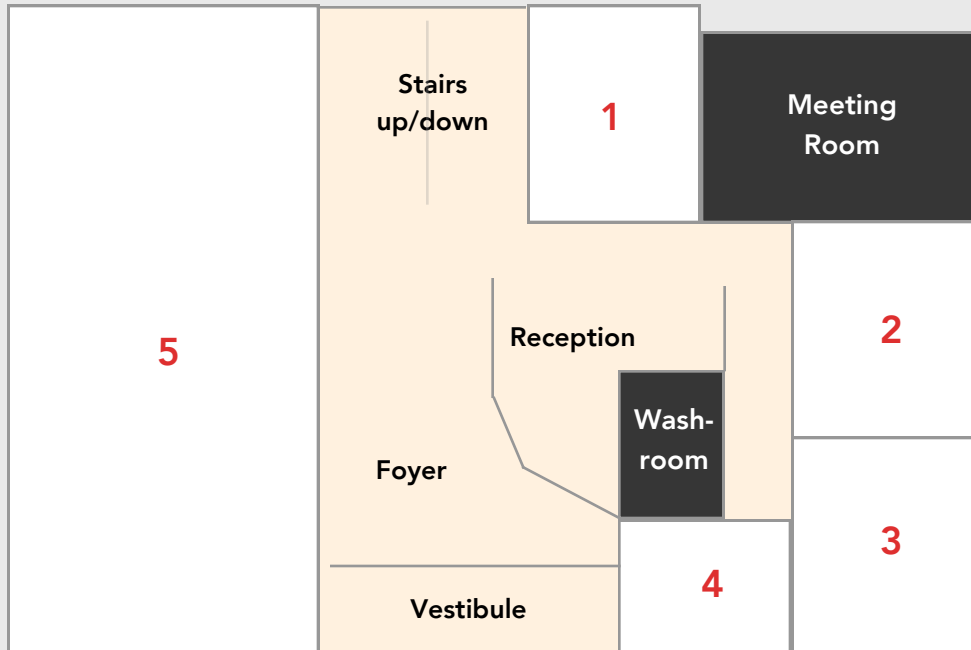
Our lower level is available for customization beyond the configuration shown here. All configurations will allow for natural light along the exterior office walls.



# MAIN LEVEL



# MAIN LEVEL



## Room 1 { 9.5 x 16 ft }

Available as an individual room rental. This office includes large windows and direct visibility of front foyer area.

## Room 2 { 12 x 15 ft }

This office has a private entrance, large window, and skylights with plenty of natural light. It also provides direct access to the meeting room.

## Room 3 { 12 x 15 ft }

Currently Occupied.

## Room 4 { 9 x 10 ft }

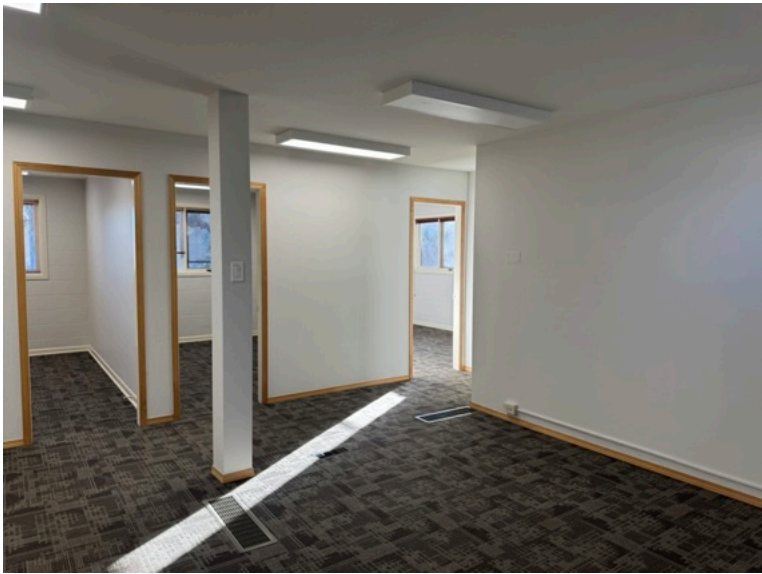
Currently occupied.

## Room 5 { 30 x 16.5 ft }

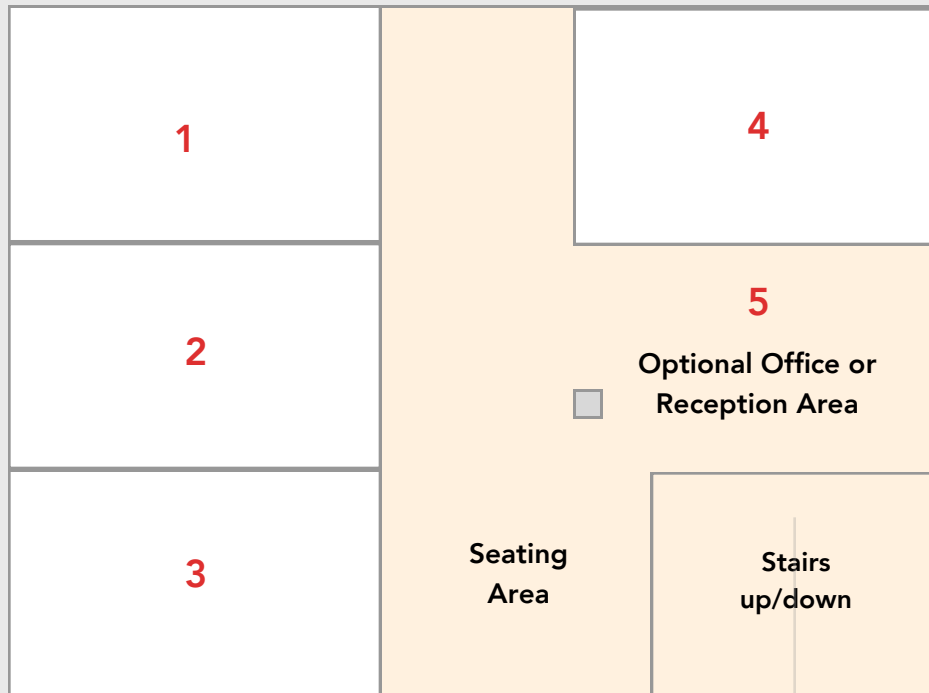
This open space can be re-jigged or subdivided into multiple offices or meeting spaces depending on your needs. The room also has a customizable private entrance, very large windows, and single-door access into the main foyer providing privacy.



UPPER LEVEL



# UPPER LEVEL



**Room 1 {10 x 13 ft}**

**Room 2 { 7.75 x 12.5 ft}**

**Room 3 { 7.75 x 12.5 ft}**

**Room 4 {10 x 13 ft}**

Four spacious rooms including two corner offices. These rooms can be merged and subdivided as needed. Available as individual offices or clusters of rooms.

**Room 5 { 7 x 12 ft}**

This open space can be walled-off, remain exposed or merged with adjacent rooms. The entire upper floor can be walled off to create a private office space.