



CBRE

SETTING *a* NEW  
STANDARD FOR THE  
FUTURE *of* WORK

*ROSE*ROCK *pl.*

121 KING ST WEST, TORONTO, ON



## A TENANT-FIRST, BOUTIQUE EXPERIENCE

Crestpoint has re-imagined 121 King St West as Roserock Place drawing inspiration from the site's storied past while nurturing its future. Deeply rooted in high-quality hospitality and with a tenant-first mindset, Crestpoint has delivered a boutique experience by establishing building programming that is responsive to its users' evolving needs and surroundings. Roserock Place is a dynamic, commute-worthy destination where its community can converge, congregate and establish pride in place.

As engaged owners and operators, Crestpoint holds themselves to the highest standard treating every touchpoint with great care to build and foster an authentic community that is open to all, thoughtfully integrated and continuously evolving.



ROSEROCK PL.





## WELCOME *to/the* CORNERSTONE OF KING & YORK

Roserock Place is a 540,000 square foot Class 'A' office tower in the heart of Toronto's financial core. Adorned in polished granite, visitors are welcomed by a fully redeveloped lobby featuring a stunning deconstructed granite centerpiece, further surrounded by soaring ceilings, inlaid marble floors, polished granite walls and a bank of 11 high-speed elevators. Operating to high sustainability and environmental standards, Roserock Place boasts a multitude of on-site amenities including a brand new tenant lounge, a fully equipped conference centre, and state-of-the-art end-of-trip facilities with shower and bike storage free of charge. Concourse retailers connect Roserock Place directly to Toronto's PATH system while the building is steps from St. Andrew Station and a short walk from Union Station. If driving in, Roserock Place offers two levels of secured underground parking. More than just an office, Roserock Place is the backdrop for life and business to take place.

# BUILDING FEATURES & UPGRADES



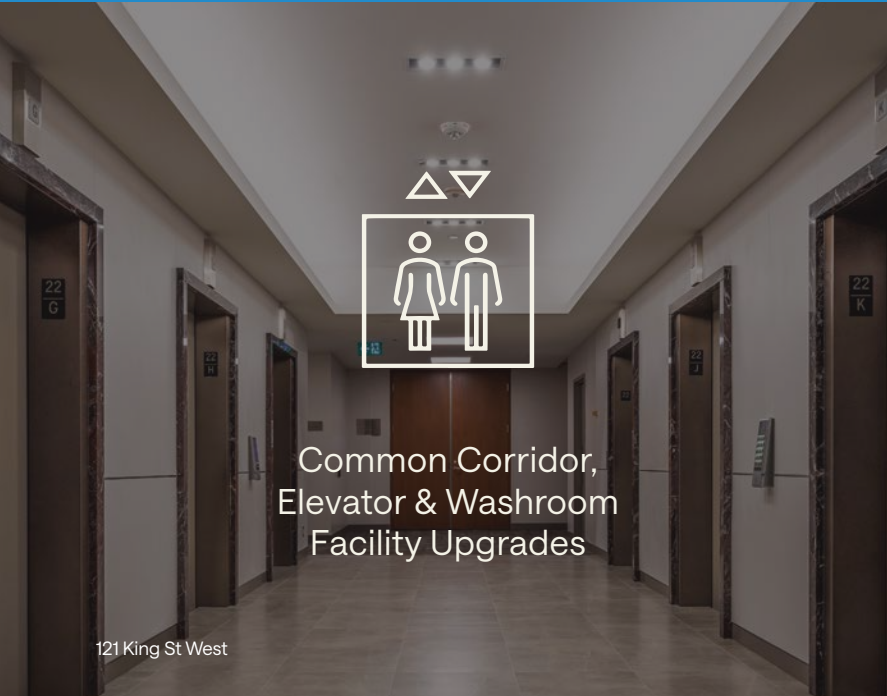
Fully Renovated  
Lobby



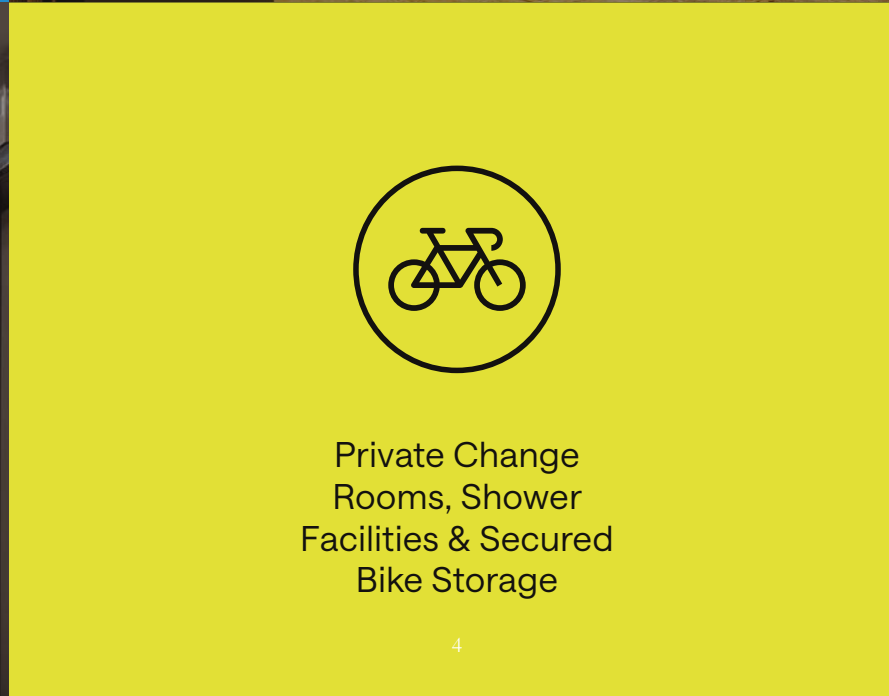
Tenant Lounge  
& Conference  
Centre



Move-In Ready  
Model Suites



Common Corridor,  
Elevator & Washroom  
Facility Upgrades



Private Change  
Rooms, Shower  
Facilities & Secured  
Bike Storage



Roserock Tenant  
Experience App

## RENOVATED LOBBY

Roserock Place offers an entryway that boasts an abundance of natural light, welcoming concierge staff and ample seating, enabling spontaneous connections and interactions between you and your colleagues, clients, and visitors.

The new lobby features a stunning deconstruction of the building's original pink granite. The transformation of the granite from its polished, refined state on the floor and across the lower vertical planes to the rough-hewn, natural state found in nature rising to the upper heights is a physical manifestation of the rebirth of the space. The organic rock wall feature is bathed in a circadian light that soothes the senses and welcomes us to the wonders of nature through the Canadian shield.

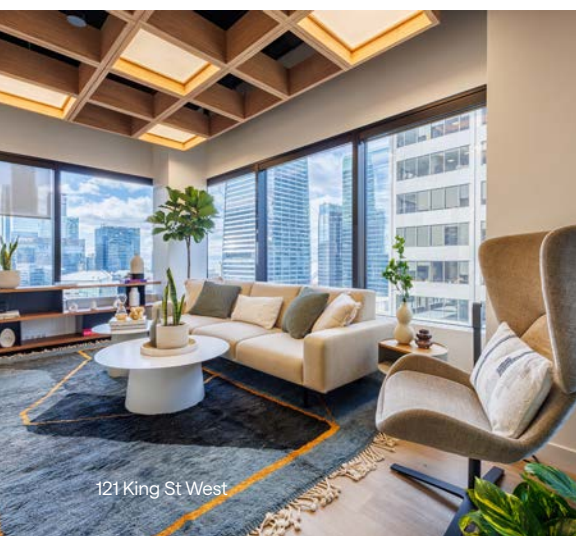


## CONFERENCE CENTRE & TENANT LOUNGE

### Leisure & Workspace

The lounge has been specifically designed to promote team collaboration, encourage learning, and offer opportunities for individual focus and rejuvenation. Outside of work hours this space provides an exclusive venue for team bonding and social experiences.

With a variety of boardrooms, breakout rooms and event spaces that can accommodate both small and large groups, the lounge is ideal for hosting unique conferences and gathering experiences for your teams or clients.



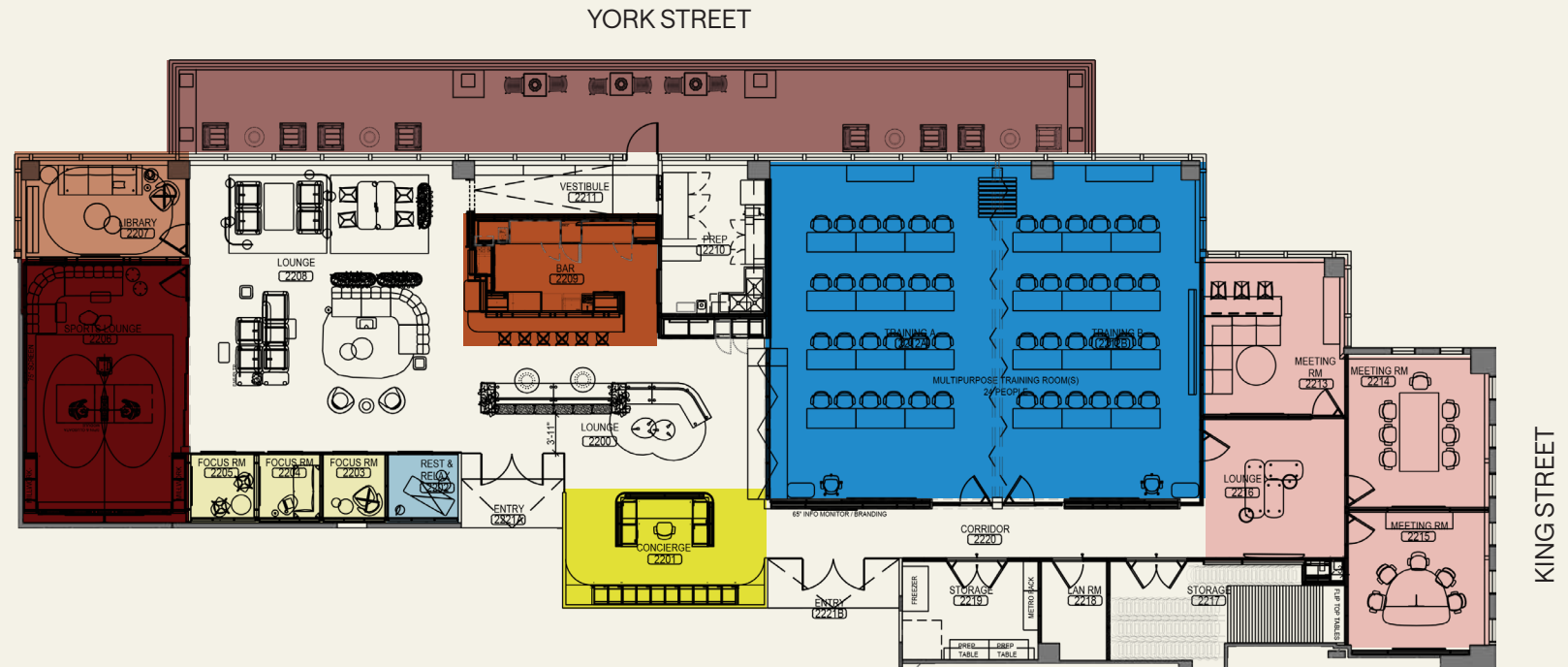
121 King St West



# CONFERENCE CENTRE & TENANT AMENITY LOUNGE

## Features Include:

- Concierge Services
- Multi-Sport Simulator
- Library
- Focus Rooms
- Bar & Lounge
- 2 Combinable 30-Person Conference Rooms
- Outdoor Patio
- Multi-Format Meeting Rooms
- Relax & Rest Rooms

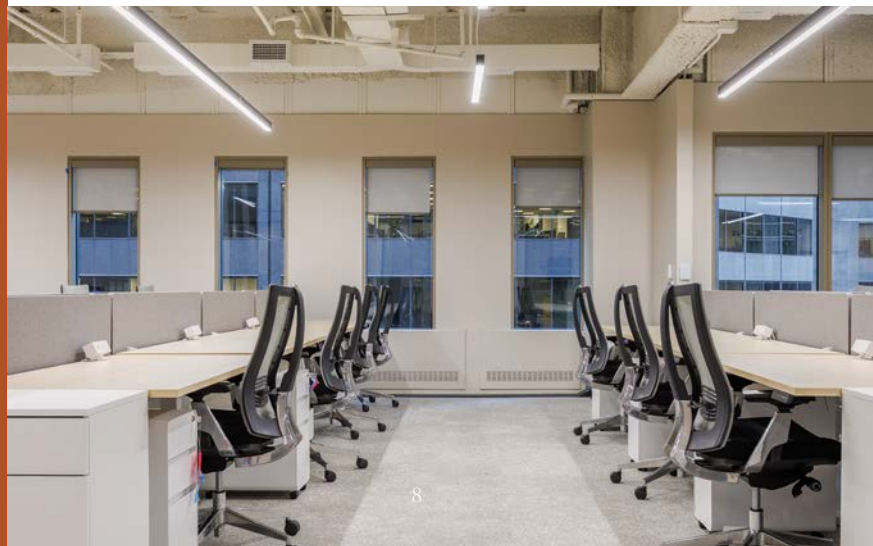


- |                                  |                 |
|----------------------------------|-----------------|
| ● Multi-Sport Simulator          | ● Library       |
| ● Bar                            | ● Relax & Rest  |
| ● Meeting Rooms with Common Area | ● Focus Rooms   |
| ● Concierge Desk                 | ● Outdoor Patio |
| ● Multipurpose Training Rooms    |                 |

## BUILT OUT MODEL SUITES

Our spaces offer a range of suite designs and aesthetics to meet various specifications. We can provide move-in ready suites or collaborate to design custom spaces to meet your needs.

Our suites feature a warm and inviting reception area, a spacious boardroom, huddle rooms for quick meetings, private offices for focused work, an open-concept workspace to encourage collaboration among team members, and a fully equipped kitchen for your team to relax and recharge.





# COMMON CORRIDOR

## Elevator Upgrades

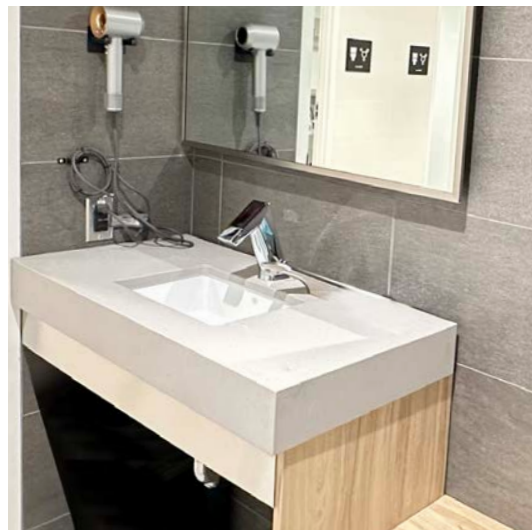
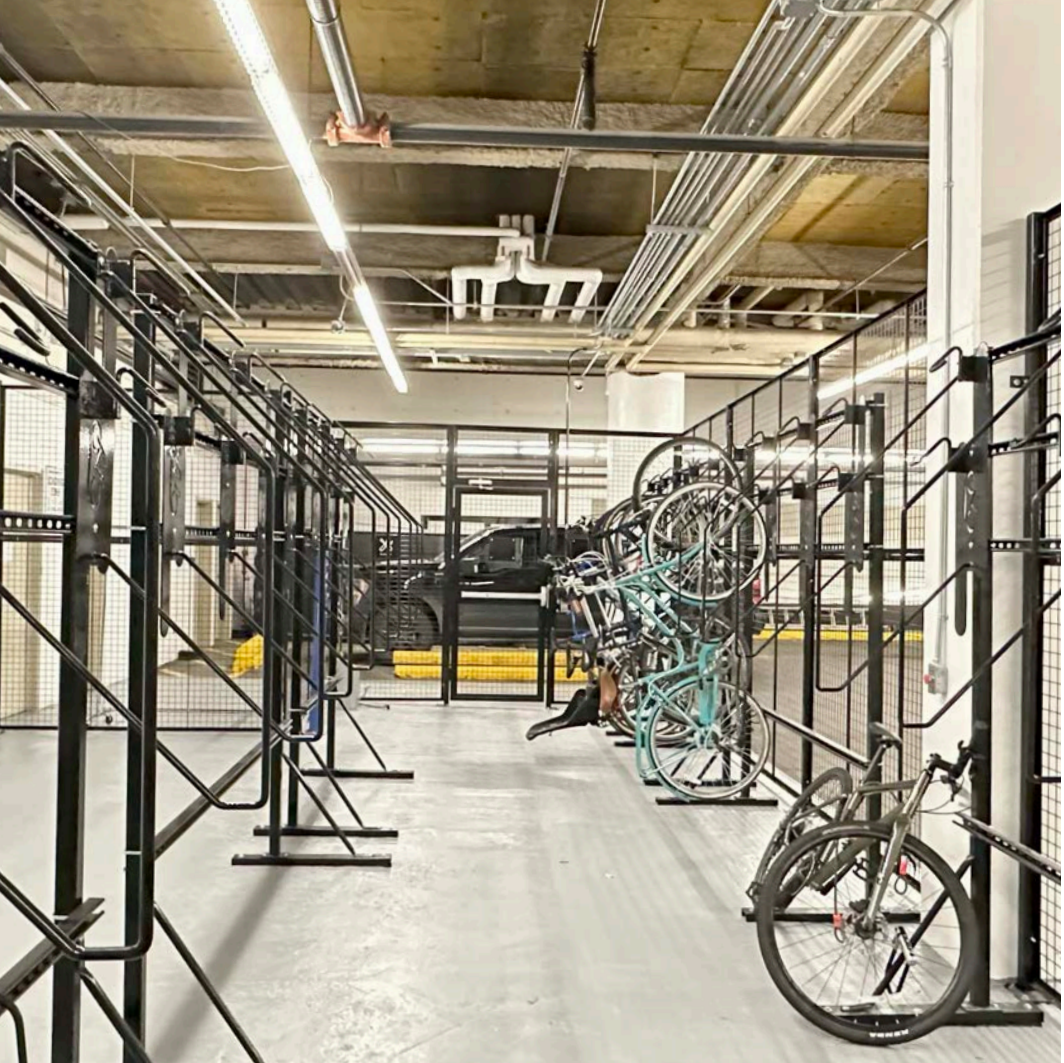
Upgrades include the elevator bay, which features a mix of materials and design elements that are smooth and refined.

The elevators themselves offer a clean, modern design that balances form with function.

## Washroom Facility Upgrades

This is an ongoing program that will see every corridor and washroom at Roserock Place elevated and refreshed.





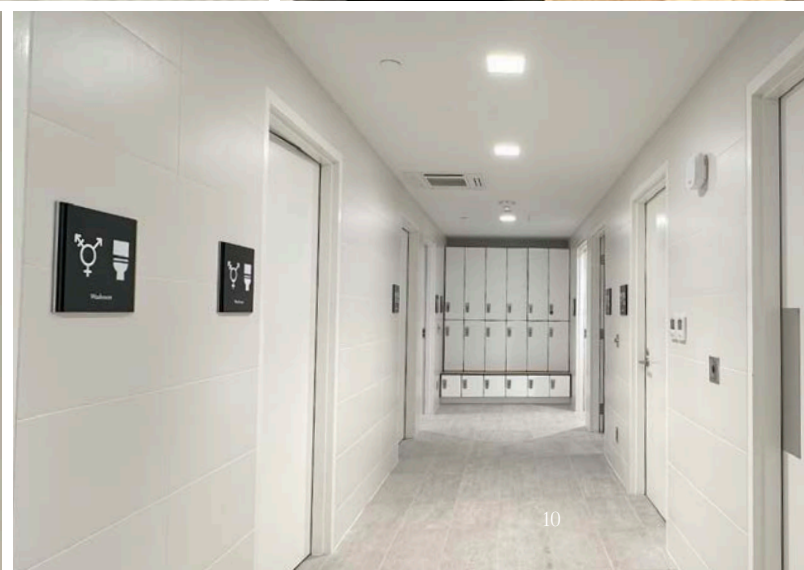
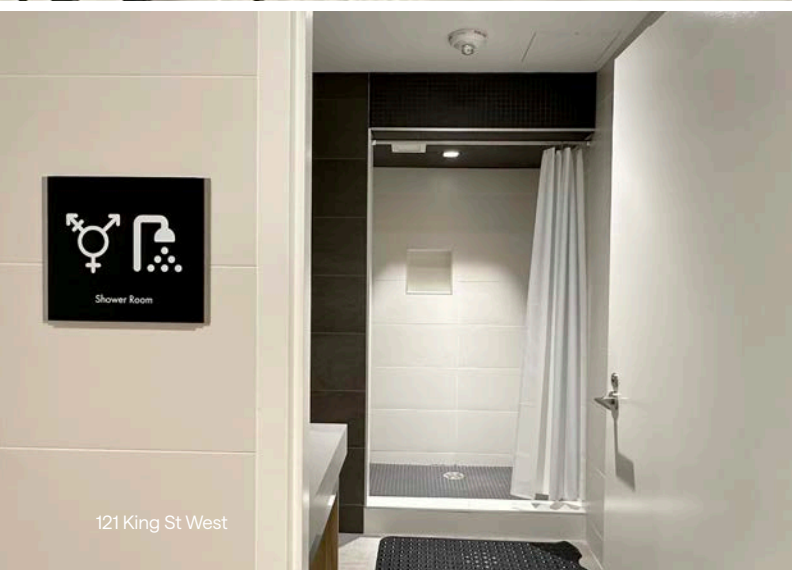
## END-OF-TRIP FACILITIES

### Change Rooms with Shower Facilities and Bike Storage

For the convenience of those who cycle into the office, tenant-exclusive change rooms and shower facilities are available, and are easily accessed from the bicycle parking and storage area in the lower level of Roserock Place.

#### Features Included:

- Towel service
- Private showers with individual change rooms
- Dyson hair dryers
- Secure lockers and bike storage
- Free of charge to tenants



## FOSTERING CONNECTION THROUGH THE ROSE ROCK APP

The building app for Roserock Place is a comprehensive tool designed to foster a sense of community among tenants and enhance their overall experience. It serves as a centralized platform for team experience initiatives, property experiences, and tenant feedback. The app promotes communication between tenants and management, encouraging users to provide input and suggestions as well as enables real-time communication and the facilitation of meaningful connections among Roserock Place tenants through unique events and thoughtful building programming.



Community



Service



Tenant Feedback



Event Planning

# TENANT ENGAGEMENT EVENTS

Explore our interactive building programming - which will have the potential to liven up your day at the office, and encourage meaningful interactions with other in-building professionals.



## Sweet Tooth Tasting

Join us for a delightful Chocolate Tasting Workshop at our office building! Enhance your palate, discover new favourites, and indulge in an exquisite array of premium chocolates. Open for all tenants, it's the perfect chance to mingle and savour some sweet moments together.



## Latte Art & Coffee Tasting

Discover the art (and joy) of coffee. Enjoy a behind-the-scenes look as a master barista transforms foam into beautiful designs, while you sip and sample brews from around the world. It's a delightful, energising experience for coffee lovers of all kinds—one that might just awaken your inner coffee connoisseur.



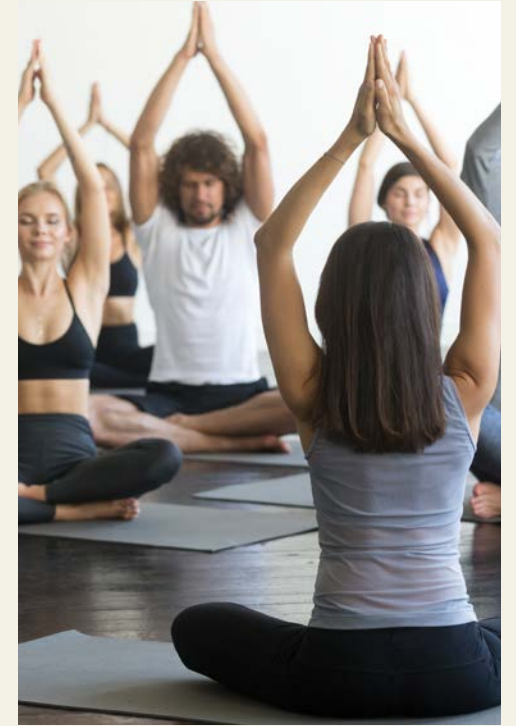
## Cocktail Class

Shake things up with an interactive mixology class at Roserock Place. Learn to craft both classic cocktails and inventive alcohol-free creations alongside expert bartenders. It's a fun, hands-on experience that blends creativity, great flavours, and community. Cheers to new skills and shared moments!



## The Sweetest Appreciation

To express our gratitude for your continued support, we're hosting an Ice Cream Day for all our esteemed tenants. Come bask in the summer sun and enjoy an array of delicious and refreshing ice cream flavours. It's our sweet way of saying thank you!



## Yoga

Stretch, breathe, and find your calm. Our yoga sessions offer the perfect midweek reset—inviting you to let go of stress and reconnect with your inner peace. Whether you're a seasoned yogi or just beginning, join us for a guided experience that leaves you feeling balanced and refreshed.

# COMMITTMENT TO HIGHEST STANDARDS

Roserock Place's foundation is built on care and it has been awarded for its highest standard in operations, connectivity, and customer health. Crestpoint continues to be a leader in Environmental, Social and Governance initiatives holding itself accountable for a better, more sustainable future.

**LEED® EB GOLD**  
Year 2018 — 2027



**WIRED SCORE PLATINUM**  
Year 2018 — 2026



**FITWEL 2 STAR**  
Year 2018 — 2028



**BOMA BEST PLATINUM**  
Year 2017 — 2028



**RICK HANSEN FOUNDATION**  
Year 2018 — 2029



# ENSURING A SUSTAINABLE FUTURE



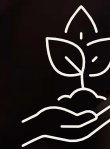
## Energy, Water And Greenhouse Gases

Our goal is to decrease utility consumption and greenhouse gas emissions by targeting all three impact areas: building systems, operations, and tenant behaviour. To achieve a 10% energy use reduction, we utilize our Stream system to analyze past energy use, identify preliminary targets in the three areas, and develop an annual action plan.



## Waste Management

Roserock Place has established Waste Reduction and Recycling programs, including the collection of various materials like paper, plastics, glass, organics, e-Waste, wood and writing instruments. The effectiveness of these programs is assessed through monthly waste diversion reports, which are analyzed quarterly for annual target adjustments.



## Indoor/Outdoor Environment

Roserock Place is implementing eco-friendly practices for both indoor and outdoor environments. Outdoors, we have installed drought-resistant plants and use environmentally friendly herbicides and fertilizers. We have a rooftop garden where the harvested food is donated to local shelters. In addition, our tiniest tenants are moving in as we implement the Beehive program to foster a healthier habitat. Indoors, we upgraded our lighting system to protect local birds, we utilize energy-efficient architectural features, and conduct annual air quality testing and monitoring.

# ABUNDANT LOCAL AMENITIES

## Restaurants



- 1 Modus Restaurant
- 2 Black and Blue
- 3 Bardi's Steak House
- 4 Earls Kitchen + Bar
- 5 Bymark
- 6 Canoe
- 7 Sushi Yugen
- 8 Alobar Downtown
- 9 Kellys Landing
- 10 Ki Modern Japanese + Bar
- 11 Walrus Pub & Beer Hall
- 12 King Taps
- 13 Cactus Club Cafe
- 14 Chotto Matte
- 15 Jump Restaurant
- 16 Daphne
- 17 Hys
- 18 Oliver Bonaccini
- 19 Local Public Eatery

## Hotels



- 1 Fairmont Royal York Hotel
- 2 Shangri-La
- 3 The Ritz-Carlton
- 4 One King Street W Hotel
- 5 The St. Regis Hotel
- 6 Sheraton Hotels & Resorts
- 7 Le Germain Hotel
- 8 The Soho Hotel & Residences
- 9 Marriott Hotels
- 10 Westin Hotels & Resorts

## Cafes



- 1 Aroma
- 2 Neo Coffee
- 3 Mos Mos
- 4 Saint James
- 5 Maman
- 6 Cafe Landwer
- 7 Starbucks Coffee
- 8 Dineen Coffee
- 9 Cafe Plenty

## Retailers

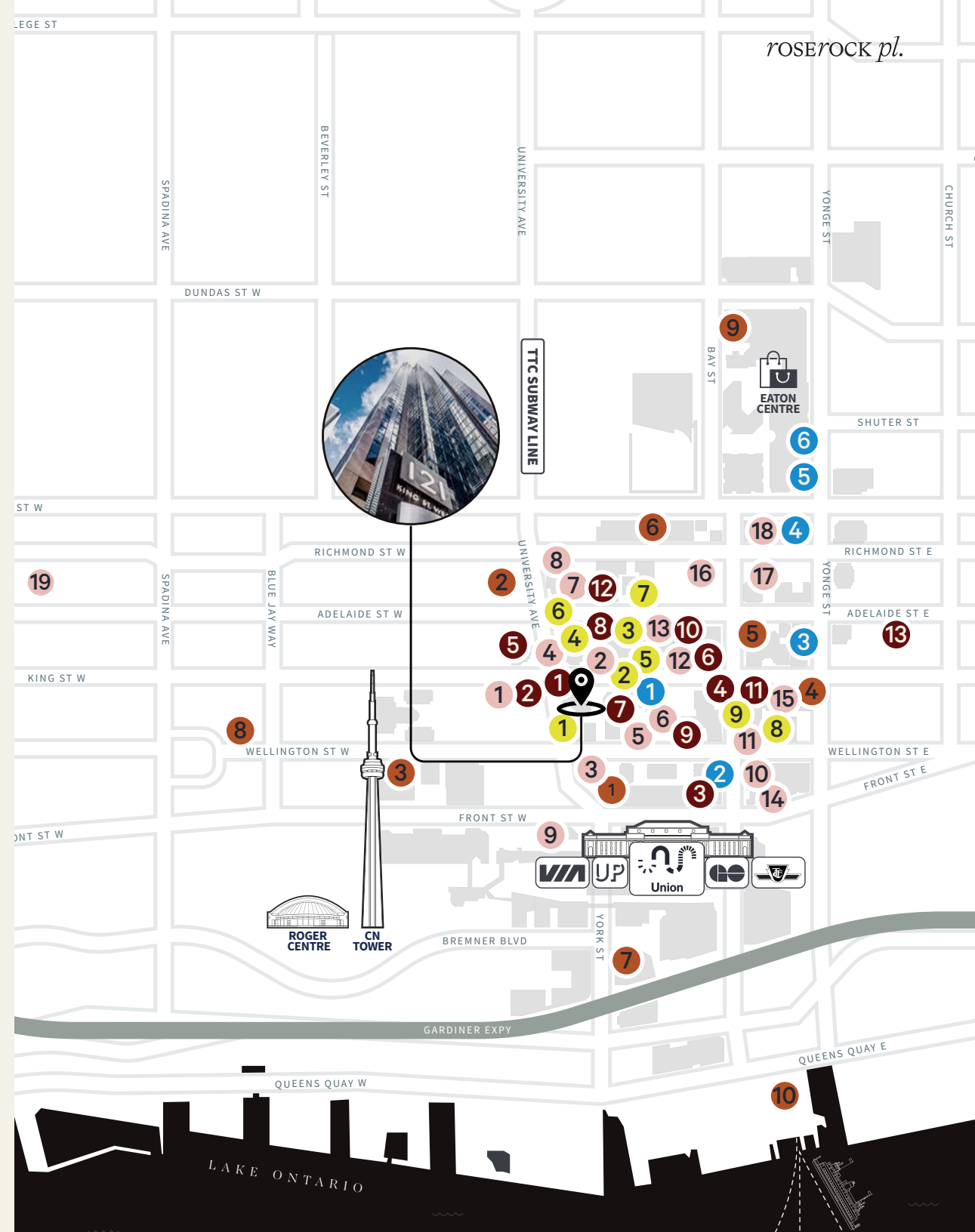


- 1 Rego Bespoke
- 2 LCBO
- 3 Moores Men Clothing
- 4 Saks Fifth Avenue
- 5 Harry Rosen
- 6 L'Occitane En Provence

## Services



- 1 National Bank
- 2 Scotiabank
- 3 RBC Bank
- 4 TD Bank
- 5 CIBC
- 6 Bank of Montreal
- 7 The Printing House
- 8 Integra Health Centre
- 9 Stitch It Clothing Alterations & Dry Cleaning
- 10 Adelaide Club
- 11 Equinox
- 12 Medcan
- 13 Canada Post



ROSEROCK pl.

LAKE ONTARIO

# PROPERTY DETAILS

Gross Leasable Area	Approximately 540,000 SF
Total Retail Space	10,666 SF
Additional Rent	\$33.10 per SF
Location	Located centre stage in Toronto's financial district directly across from the Toronto Stock Exchange. One block from the King/Bay intersection. Directly connected to the PATH underground pedestrian walkway system with direct access to TTC subway stations such as St. Andrew and Union Station. Easily accessible from the King streetcar route and GO train at Union Station.
Amenities	<ul style="list-style-type: none"><li>• Concourse retail outlets</li><li>• Nursing Room</li><li>• Conference Centre &amp; Tenant Amenity Lounge:<ul style="list-style-type: none"><li>◦ Concierge services</li><li>◦ Sports stimulator</li><li>◦ Library</li><li>◦ Focus rooms</li><li>◦ Bar and lounge</li><li>◦ 2 combinable 30-person conference rooms</li><li>◦ Outdoor patio</li><li>◦ Multi-format meeting rooms</li></ul></li></ul>
Environmental, social and governance	<ul style="list-style-type: none"><li>• Roof top garden</li><li>• Beehive program</li><li>• EV chargers</li><li>• Indoor bike cage</li><li>• Organic waste collection</li><li>• Battery and electronic recycling</li></ul>
Year Built	1984
Construction Features	Fibre optic available
Design Features	Construction - Steel frame structure with reinforced concrete core. Polished granite exterior walls. Ceiling System - T8'9" floor to T-bar ceiling; slab to slab height 12'5"; open ceiling option is available
Ceiling / Lighting	All fluorescent lighting fixtures upgraded to T-8 lamps with electronic ballast providing approx. 55 foot candles at desk-top level. Combined lighting + power = 5 to 16 watts/sf.
HVAC	Automatic HVAC system featuring a variable volume air supply and hot water perimeter heating. Air volume is replaced approx. every 20 minutes with fresh air replenished every ½ hour. Each floor has 35 thermostatically controlled zones (additional zones can be provided). Approx. 40-45 thermostatically controlled zones (30 perimeter, 15 interior)
Elevators	11 passenger elevators, 1 parking elevator, 1 freight elevator
Parking	2 levels of parking with 189 parking stalls.
Business Hours	Monday to Friday 7:00 am – 6:00 pm (Legacy leases and some leases are 8 am – 6 pm)

121 King St West



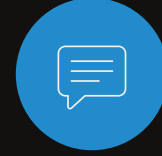
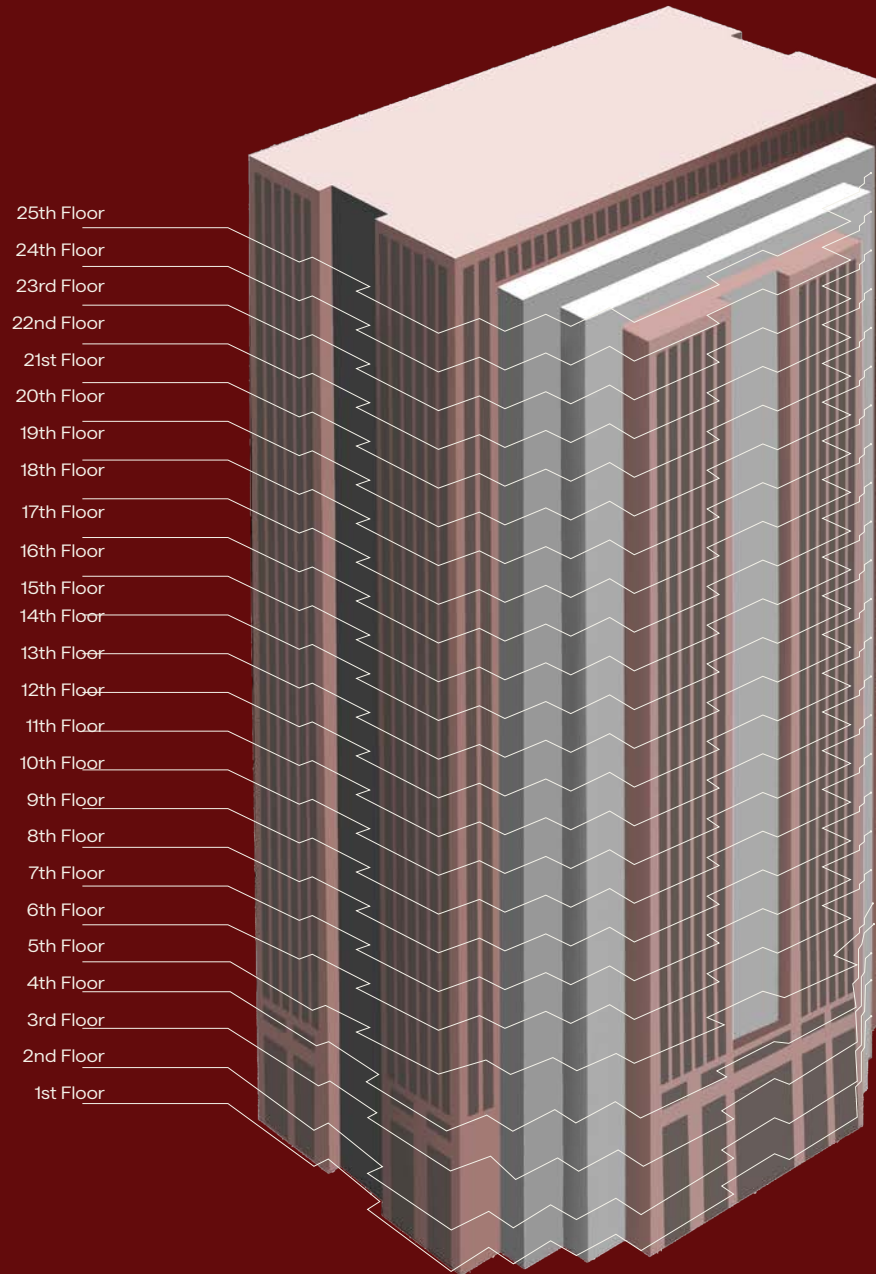
ROSE ROCK *pl.*



CBRE

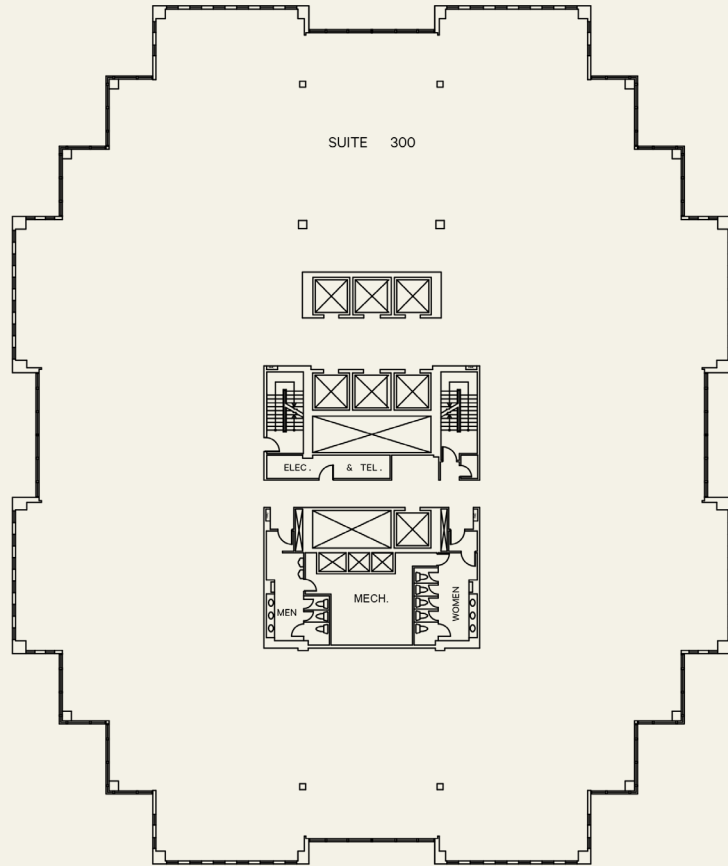
Crestpoint  
REAL ESTATE  
COMMERCIAL

# STACKING PLAN

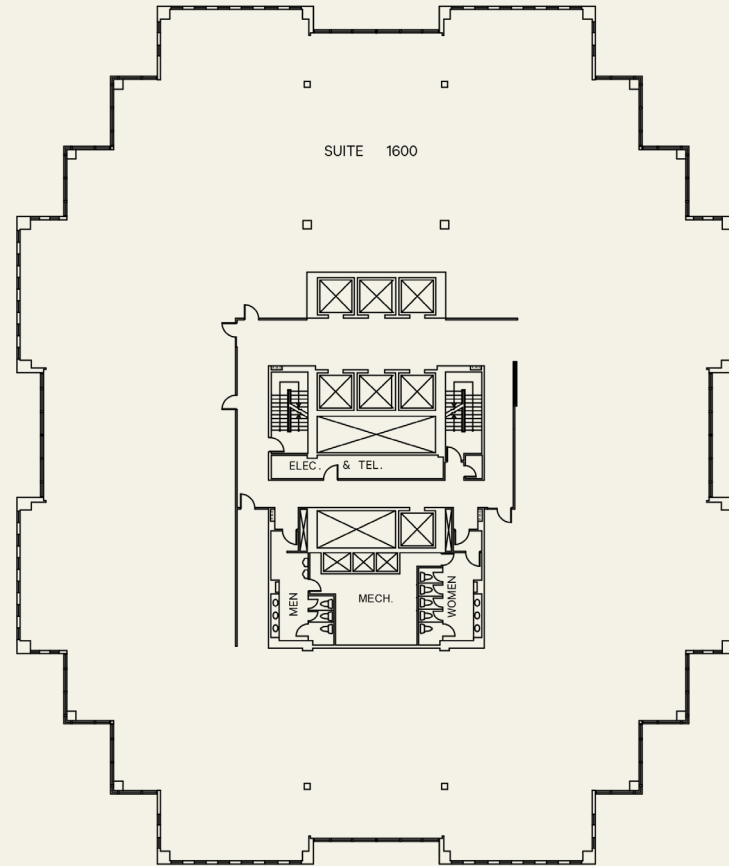


SUITE	SQ. FT.	COMMENTS	AVAILABLE DATE
Suite 2600	16,495 Sq. Ft.	Built Out	March 1st, 2026
Suite 2000	24,469 Sq. Ft.	Built Out	Immediate Available
Suite 1400	10,974 Sq. Ft.	Turnkey Suite	Immediate Available
Suite 1105	7,563 Sq. Ft.	Turnkey Model Suite	May 1st, 2026
Suite 1010	3,172 Sq. Ft.	Built Out	September 1st, 2026
Suite 1000	20,432 Sq. Ft.	Built Out	September 1st, 2026
Suite 900	23,627 Sq. Ft.	Built Out	September 1st, 2026
Suite 850	1,782 Sq. Ft.	Built Out	October 1st, 2026
Suite 700	23,547 Sq. Ft.	Base Built	Immediate Available
Suite 600	23,627 Sq. Ft.	Built Out	Immediate Available

# FLOOR PLAN



Typical Low-Rise Floor  
23,000 SF



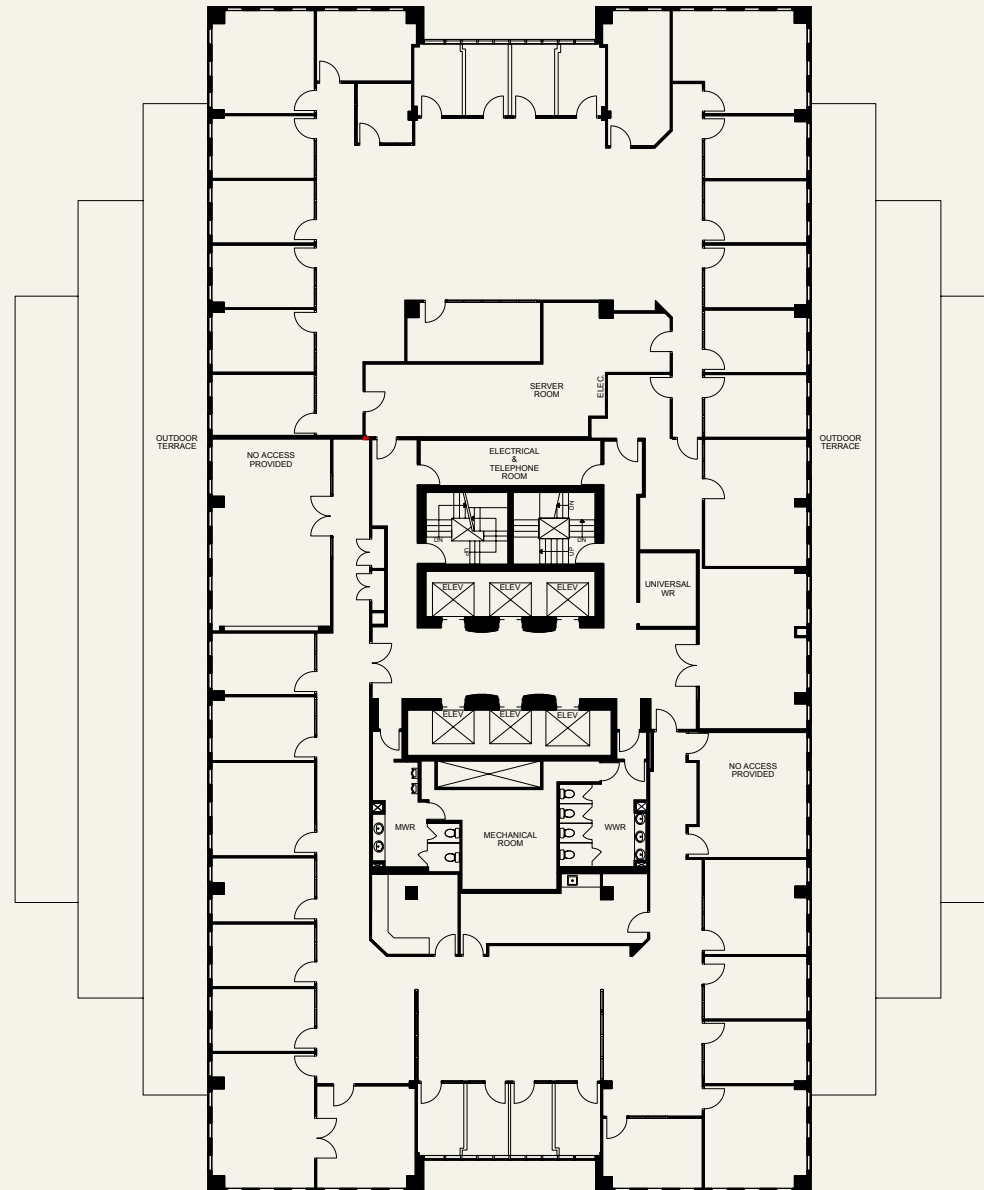
Typical High-Rise Floor  
22,000 SF

# Suite 2600 | 16,495 sq. ft.



King St West

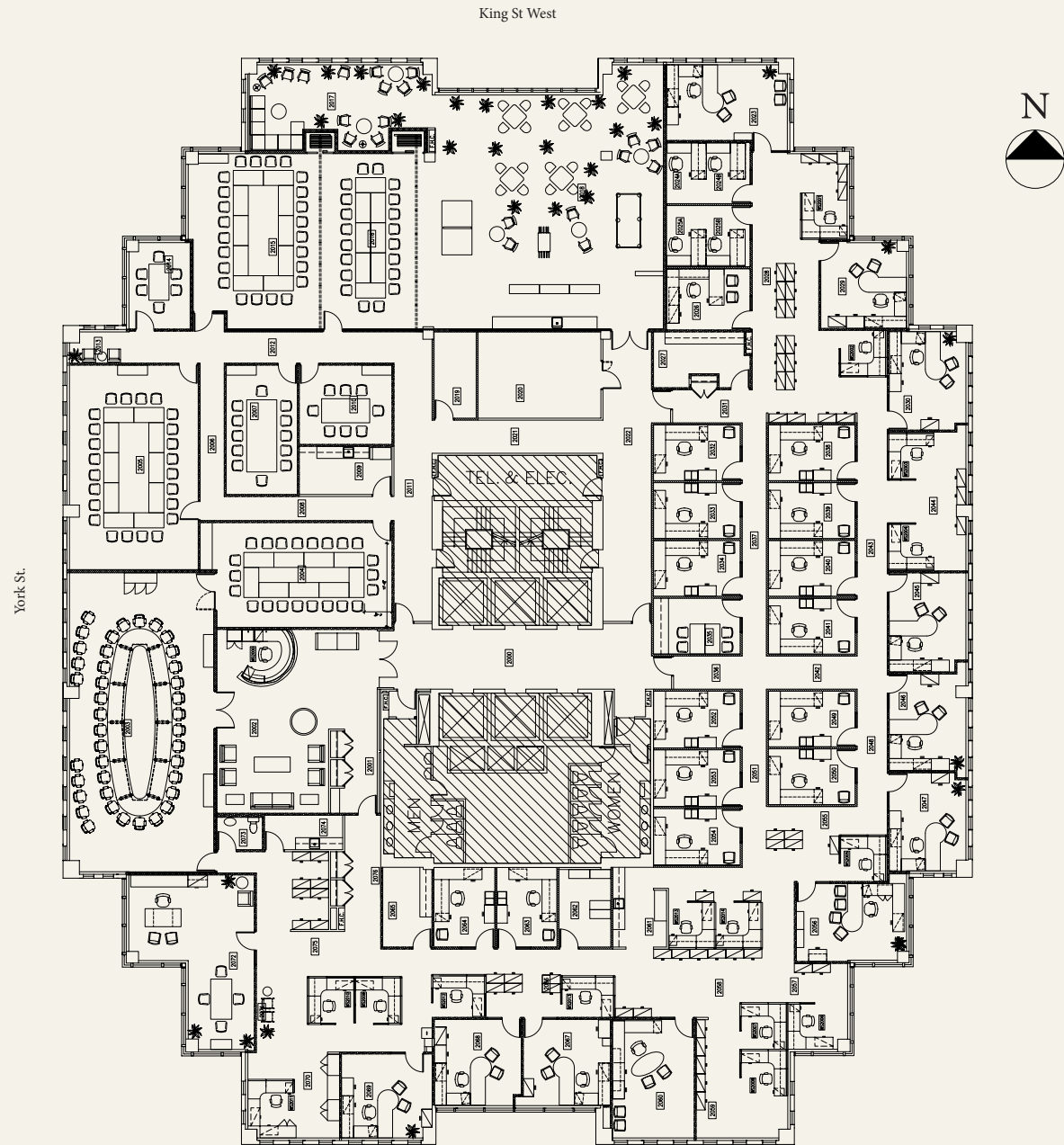
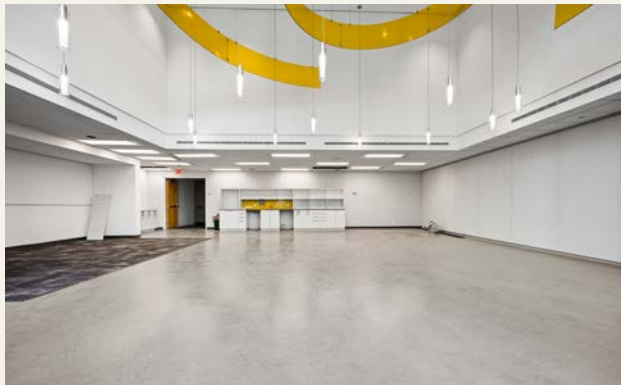
York St.



## Built Out *Full Floor Opportunity*

Suite 2600 is a full floor opportunity and can be delivered built out. This suite features two outdoor terraces.

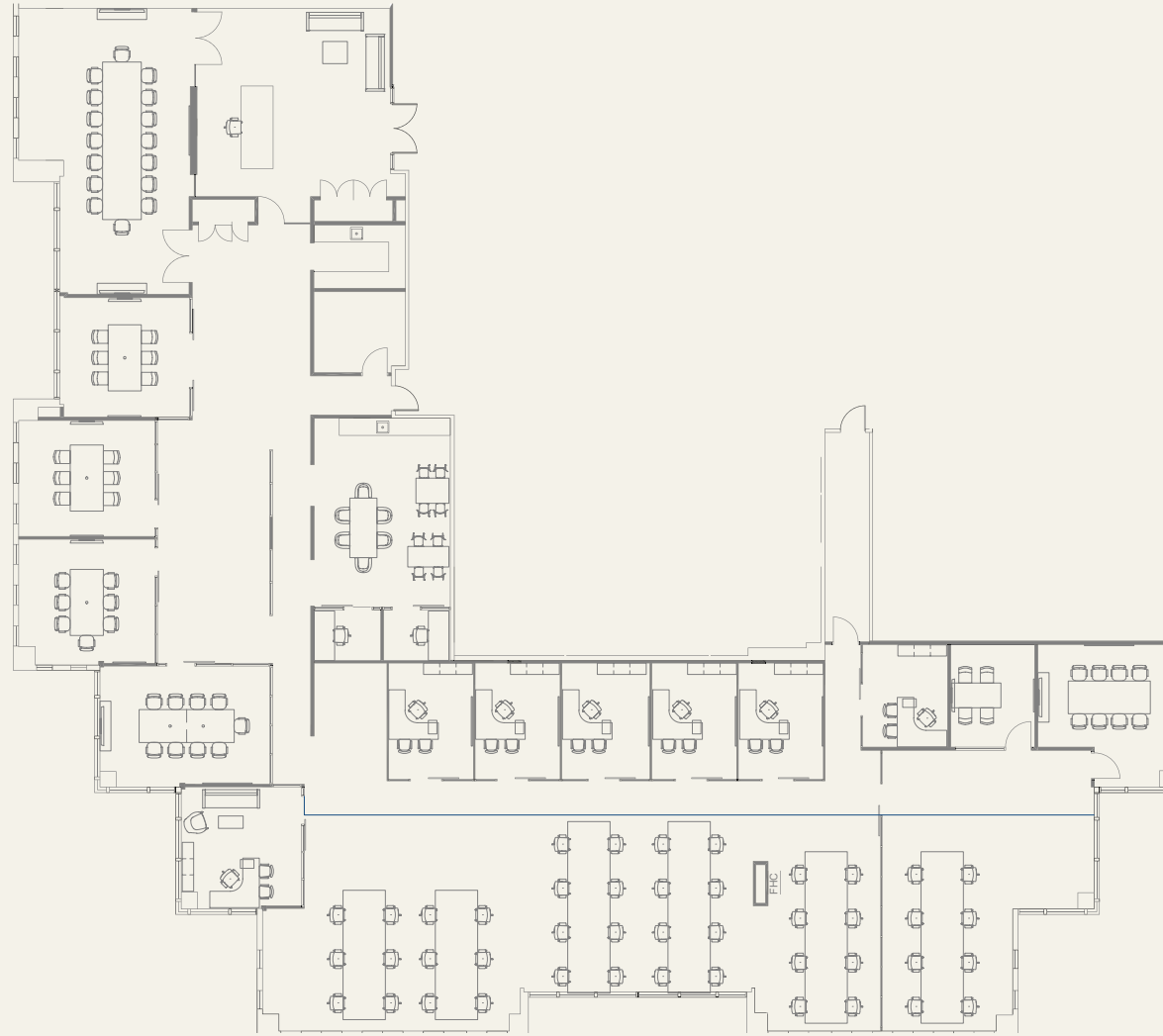
# Suite 2000 | 24,469 sq. ft.



## Built Out *Full Floor Opportunity*

Suite 2000 is a full floor opportunity and can be delivered built out. This suite has a double height ceiling in the existing kitchen area.

# Suite 1400 | 10,974 sq. ft.



## Turnkey Suite

Suite 1400 can be delivered fully furnished with boardrooms, meeting rooms, huddle rooms, a reception area, kitchen and open area.



York St.

King St West



# Suite 1105 | 7,563 sq. ft.



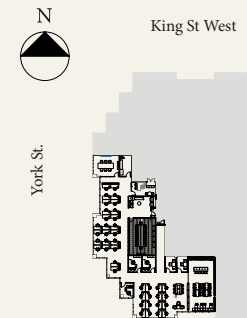
*Pictured: Model Suite 1105 renderings.*



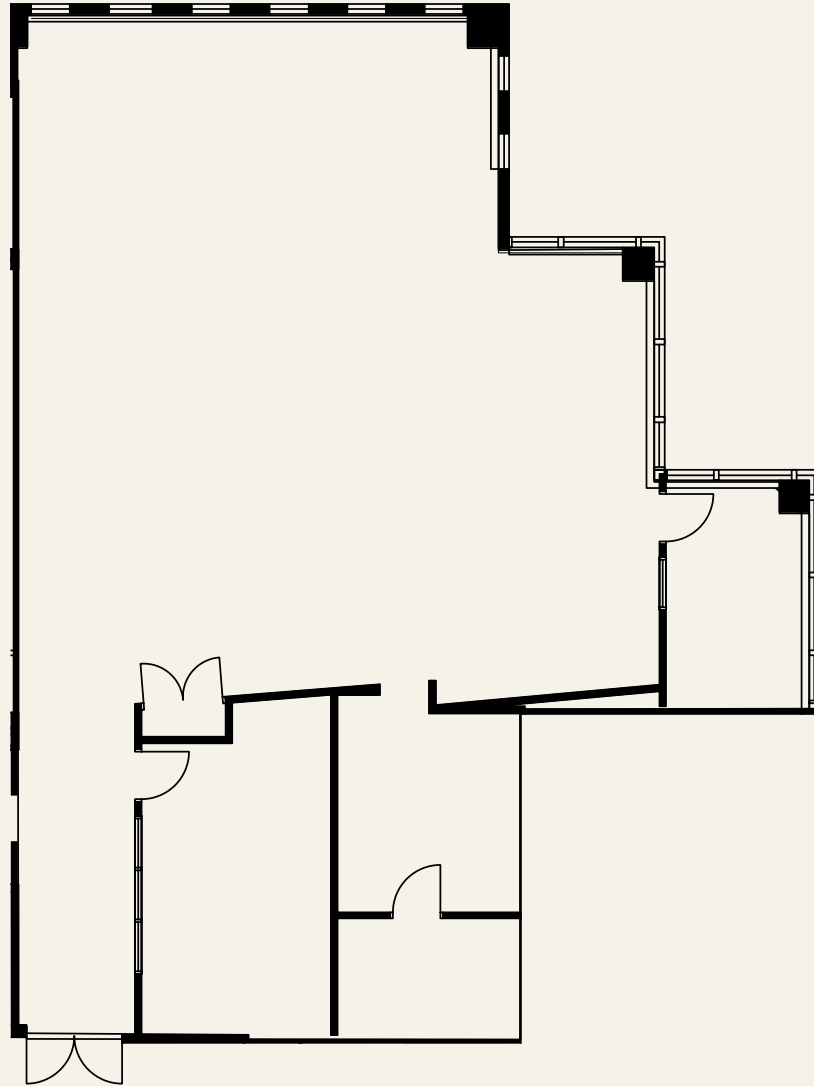
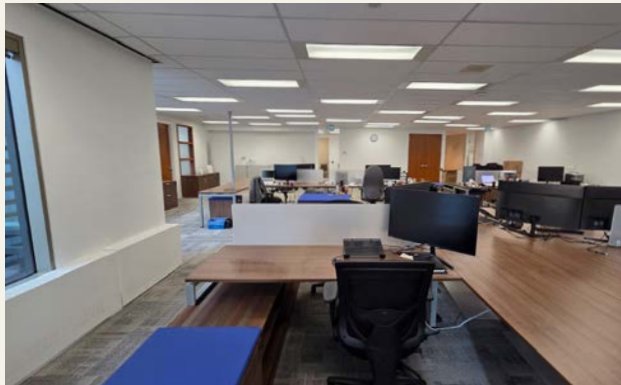
## Turnkey Model Suite

Suite 1105 is a new model suite. The fully furnished suite is built out with 34 workstations, a spacious 15-person boardroom, a 6-person conference room, two 3-person huddle rooms, 4 private offices, and sit-stand desks.

This model suite is move in ready as of May 1, 2026.



# Suite 1010 | 3,172 sq. ft.



## Built Out

Suite 1010 is fully built out, with a boardroom, kitchenette, storage room, and dedicated IT room.

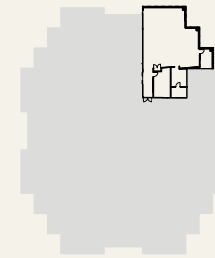
The suite is contiguous with suite 1000 up to 23,604 square feet.

This is a future availability.



York St.

King St West



# Suite 1000 | 20,432 sq. ft.



## Built Out

Suite 1000 can be delivered built out.

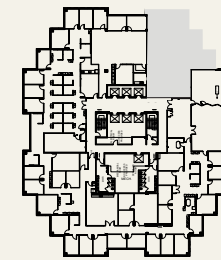
The suite is contiguous with suite 1010 up to 23,604 square feet.

This is a future availability.

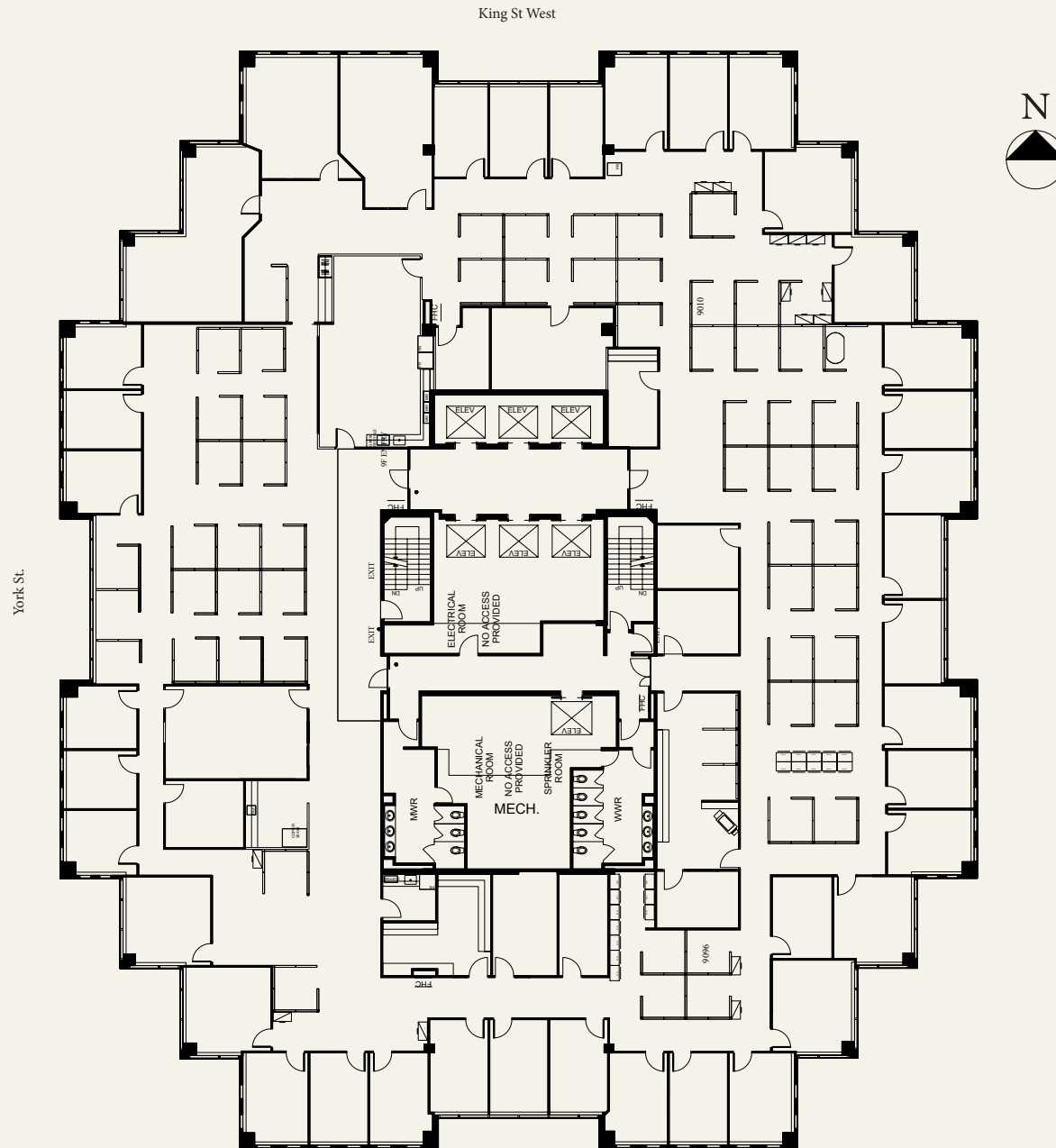


York St.

King St West



Suite 900 | 23,627 sq. ft.



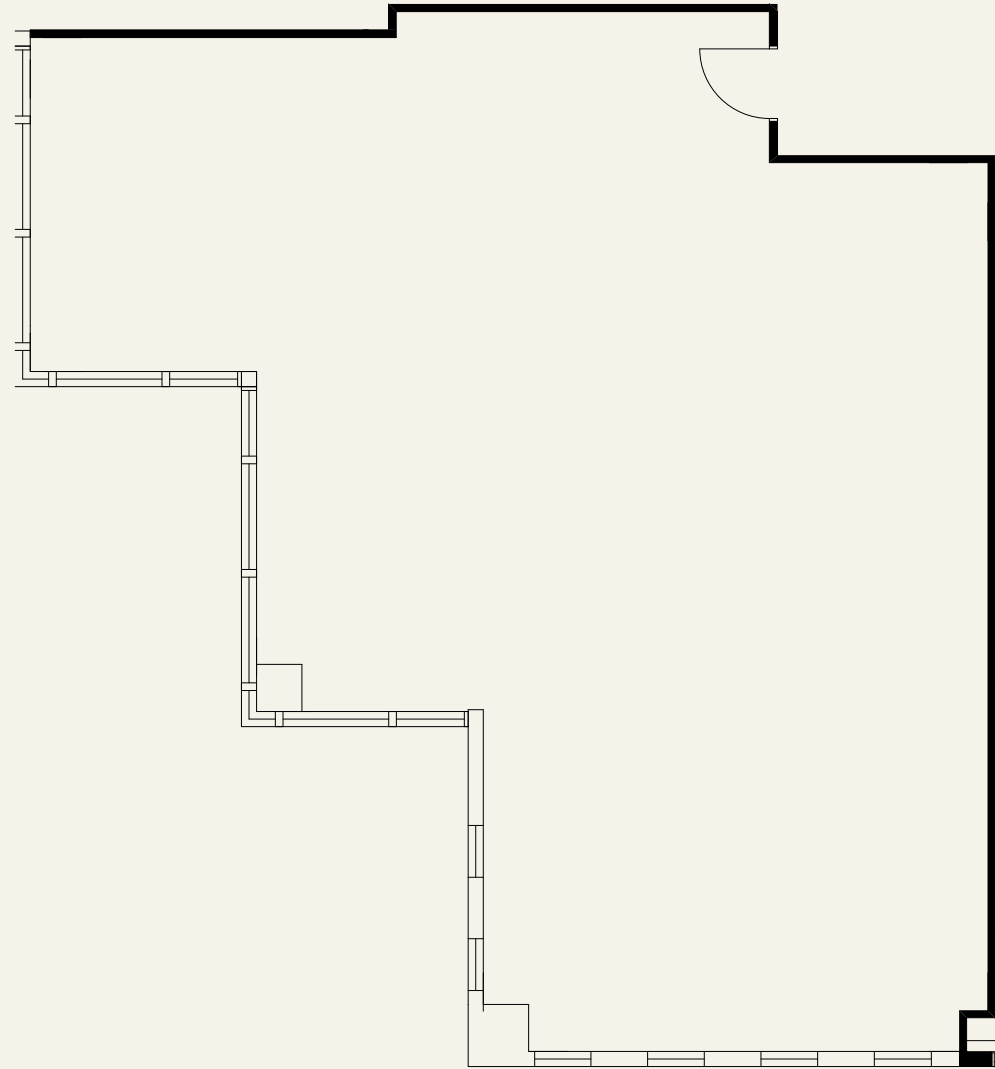
## Built Out *Full Floor Opportunity*

Suite 900 is a full floor opportunity and can be delivered built out.

Floor 9 is contiguous with floor 10 up to 47,231 square feet.

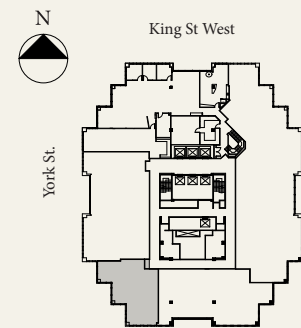
This is a future availability.

# Suite 850 | 1,782 sq. ft.

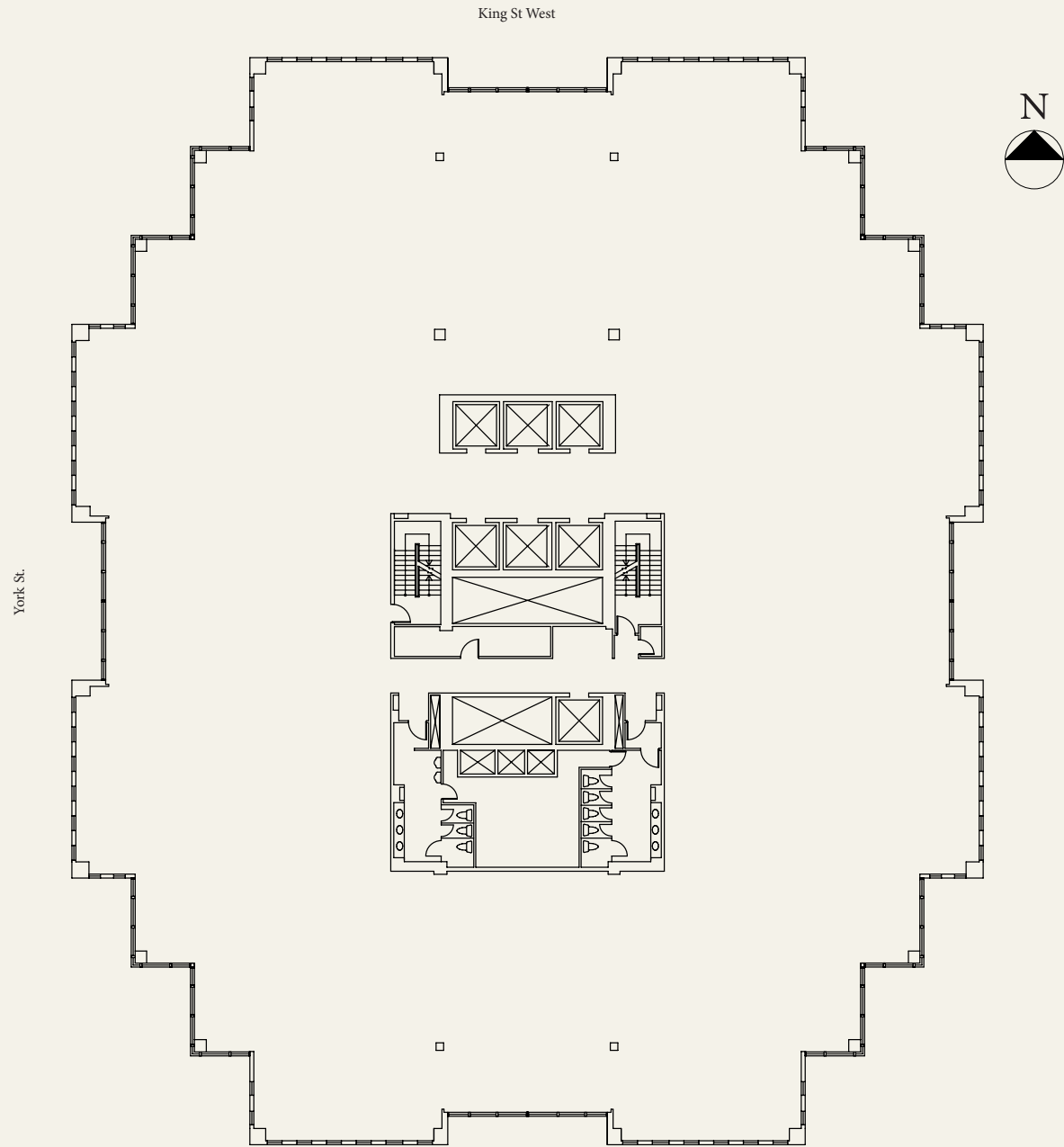


## Built Out

This suite features one office, one meeting room, one boardroom and half a kitchenette.



# Suite 700 | 23,547 sq. ft.

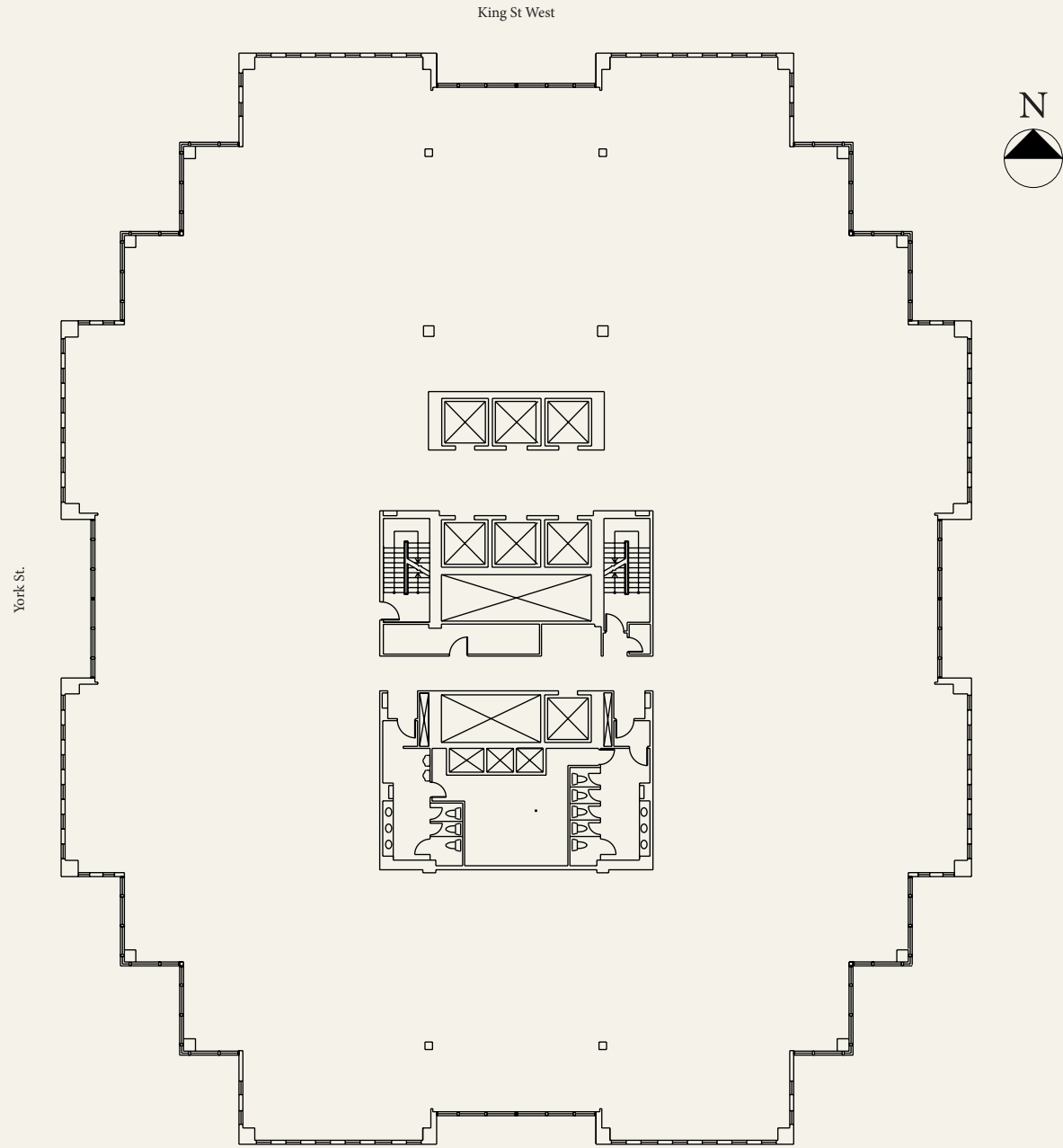


## Base Built

*Contiguous to 600 + 700 : 47,174 SF*

Suite 700 is contiguous up to 47,174 square feet and can be delivered in base building condition.

# Suite 600 | 23,627 sq. ft.



## Built Out

*Contiguous to 600 + 700 : 47,174 SF*

Suite 600 is contiguous up to 47,174 square feet and can be delivered in base building condition.



121 King St West

# *ROSEROCK pl.*

BRENDAN SULLIVAN\*

Senior Vice President

+1 416 847 3262

brendan.sullivan@cbre.com

CONOR BETHELL\*

Sales Associate

+1 647 943 4174

conor.bethell2@cbre.com

\*Sales Representative

**CBRE**



This disclaimer shall apply to CBRE Limited, Real Estate Brokerage, and to all other divisions of the Corporation; to include all employees and independent contractors ("CBRE"). The information set out herein, including, without limitation, any projections, images, opinions, assumptions and estimates obtained from third parties (the "Information") has not been verified by CBRE, and CBRE does not represent, warrant or guarantee the accuracy, correctness and completeness of the Information. CBRE does not accept or assume any responsibility or liability, direct or consequential, for the Information or the recipient's reliance upon the Information. The recipient of the Information should take such steps as the recipient may deem necessary to verify the Information prior to placing any reliance upon the Information. The Information may change and any property described in the Information may be withdrawn from the market at any time without notice or obligation to the recipient from CBRE. CBRE and the CBRE logo are the service marks of CBRE Limited and/or its affiliated or related companies in other countries. All other marks displayed on this document are the property of their respective owners. All Rights Reserved.