

# SAN MATEO SCIENCE CENTER

Class A Lab Space in the Heart of the Peninsula

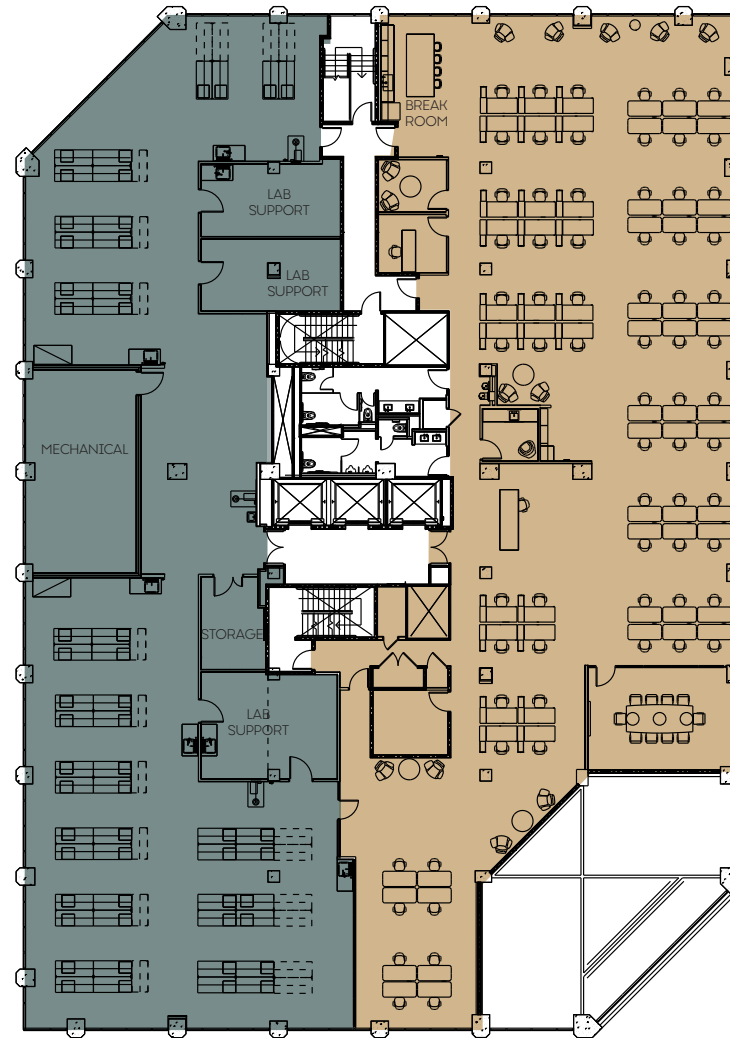


**NEWMARK**

**SAN MATEO** / **SCIENCE CENTER**

MARINERS ISLAND BLVD  
**901 / Floor 2**

Single Tenant Floor Plan  
± 19,300 Square Feet



- Lab Benches: 52\*
- Workstations: 70
- Office/Huddle: 2
- Conference Rooms: 1
- Wellness Room: 1

\*Casework provided

■ ±9,650 SF LAB      ■ ±9,650 SF OFFICE

**Bill Benton**  
Vice Chairman  
415 274 4421  
bill.benton@nrmk.com  
Lic. #01247617

**Eric Bluestein**  
Executive Managing Director  
650 688 8547  
eric.bluestein@nrmk.com  
Lic. #01720416

**John Kraft**  
Managing Director  
650 358 5277  
john.kraft@nrmk.com  
Lic. #01787698

**Neill Sherron**  
Partner, Portfolio Leasing  
919 414 0320  
nsherron@lfrp.com





# NEWMARK

**JOHN KRAFT**

Managing Director  
650 358 5277  
john.kraft@nmrk.com  
Lic. #01787698

**ERIC BLUESTEIN**

Executive Managing Director  
650 688 8547  
eric.bluestein@nmrk.com  
Lic. #01720416

**BILL BENTON**

Vice Chairman  
415 274 4421  
bill.benton@nmrk.com  
Lic. #01247617

**COLIN KLOEZEMAN**

Associate  
650 688 8532  
colin.kloezeman@nmrk.com  
Lic. #02210827

**NEILL SHERRON**

Partner, Portfolio Leasing  
919 414 0320  
nsherron@lfrep.com

Procuring broker shall only be entitled to a commission, calculated in accordance with the rates approved by our principal only if such procuring broker executes a brokerage agreement acceptable to us and our principal and the conditions as set forth in the brokerage agreement are fully and unconditionally satisfied. Although all information furnished regarding property for sale, rental, or financing is from sources deemed reliable, such information has not been verified and no express representation is made nor is any to be implied as to the accuracy thereof and it is submitted subject to errors, omissions, change of price, rental or other conditions, prior sale, lease or financing, or withdrawal without notice and to any special conditions imposed by our principal.