

NOW LEASING

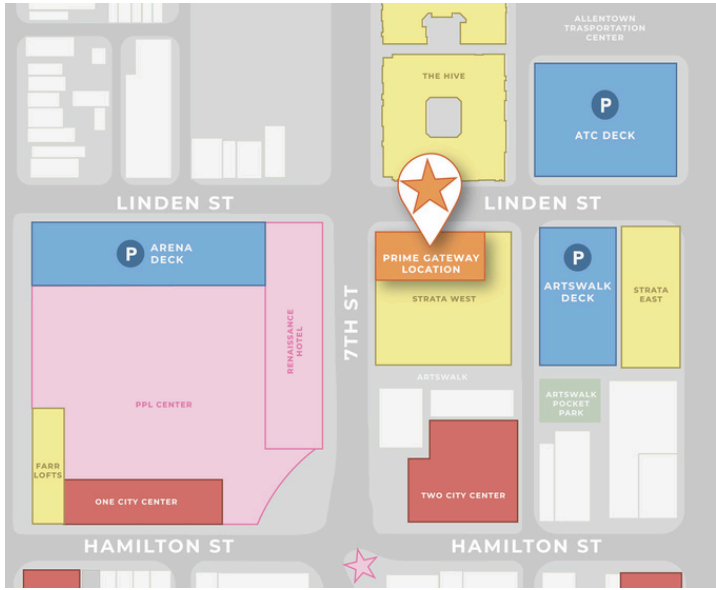
27 N 7TH STREET #100

DOWNTOWN ALLENTOWN, PA



AVAILABLE

DOWNTOWN IS YOUR BEST AMENITY



PRIME LOCATION AT SIGNALIZED INTERSECTION



ACROSS FROM THE PPL CENTER



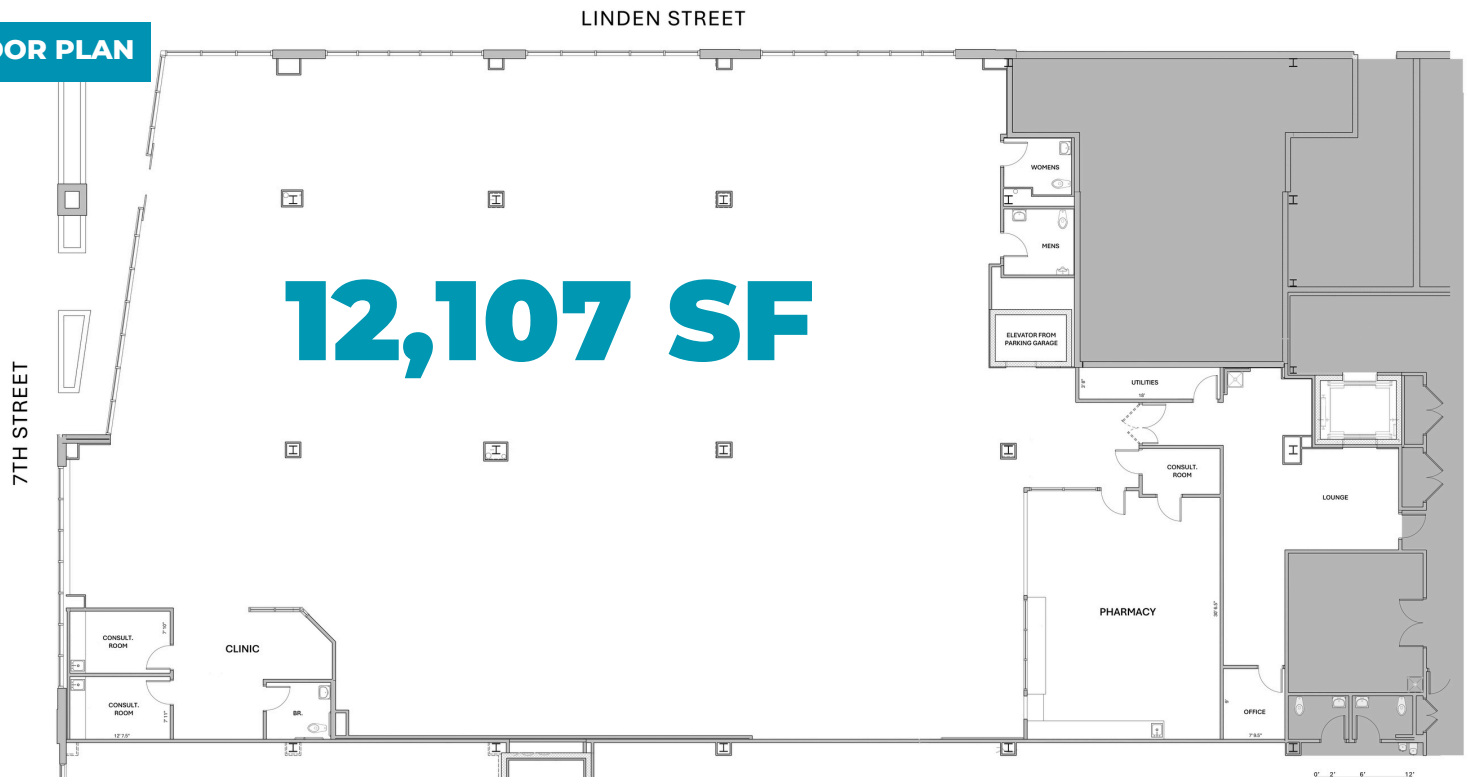
NOW LEASING

27 N 7TH STREET #100

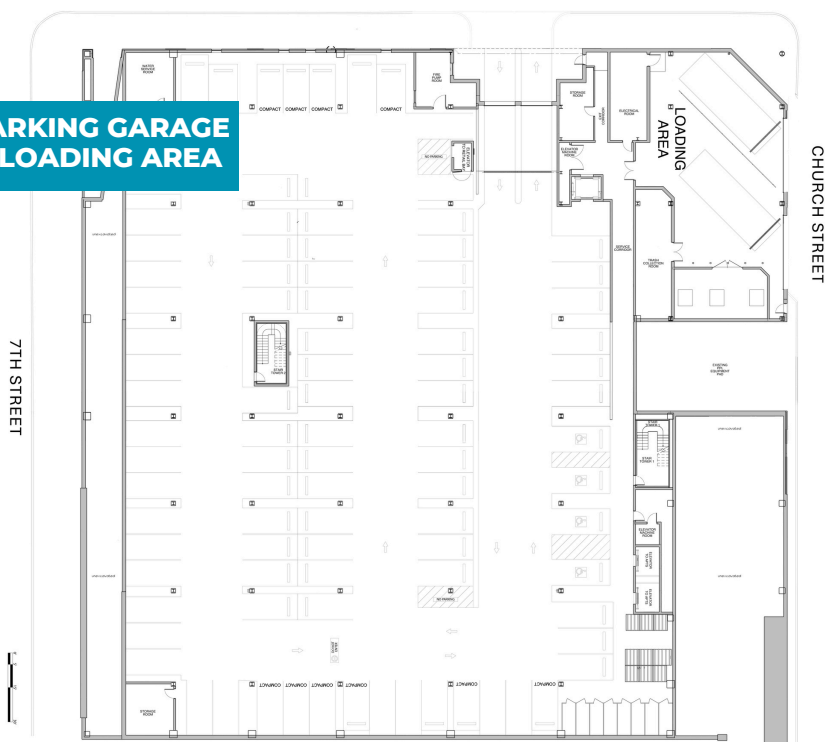
DOWNTOWN ALLENTOWN, PA



FLOOR PLAN



PARKING GARAGE & LOADING AREA



- HIGHLY VISIBLE LOCATION AT SIGNALIZED INTERSECTION OF MACARTHUR ROAD (RT 145) AND LINDEN STREET.
- CONVENIENT UNDERGROUND PARKING WITH ELEVATOR DIRECTLY TO SPACE.
- OVER 53,000 PEOPLE LIVING WITHIN ONE MILE OF LOCATION
- OVER 1,500 BRAND NEW APTS WITHIN WALKING DISTANCE
- OFF STREET LOADING DOCK
- TI ALLOWANCE OFFERED



MEGAN COLON
MCOLON@CITYCENTERGRP.COM
610.625.5538