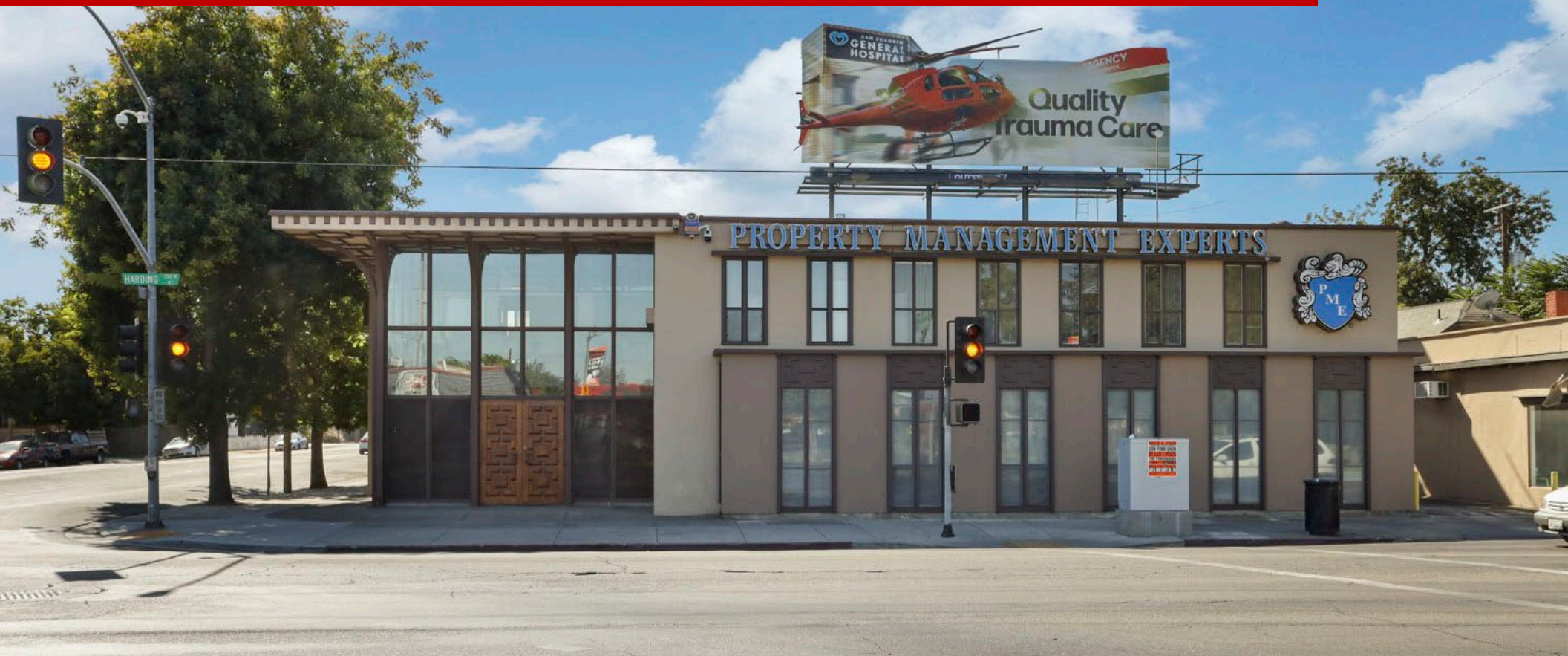


FOR LEASE ±3,000 SF

SECOND FLOOR – LEASE RATE: \$1.10 psf MG per month



FOR LEASE

200 W HARDING ST., STOCKTON, CA

2nd FLOOR OF 200 HARDING (SEPARATE ADDRESS 1435 N Madison)

**FOR MORE INFORMATION
CONTACT:**

LIDDICOAT

Corp. Lic. 02305797

CRE

LORIE LIDDICOAT

209.915.9913

Lic. 01952818

Lorie@LiddicoatCRE.com

All information found in this marketing package have been gathered from resources believed to be reliable. Brokers and Agents do not warrant, guarantee or represent the accuracy of the Information and recommend that all information be verified prior to a transaction.

NOW LEASING

Position your office where convenience meets character. Located just down the block from the University of the Pacific and steps from the vibrant Miracle Mile, surrounded by popular restaurants, financial services, and the Stockton Adult School.

Situated on the second floor of 200 Harding Way, this ±3,000 SF office has a functional layout and an abundance of workspace.

Features Include:

- Seven (7) private offices in a variety of size
- Open workspaces throughout
- Conference room overlooking the Miracle Mile
- Onsite and Street Parking Available
- *Two Stair-access entry points to second floor
- Select Suites Available with short-term leases

* Second Floor Access via Stairs Only

NEED MORE ROOM TO GROW? Adjacent to the premises is a commercial building with wide open floor plan located at 220 Harding that can also be leased under same ownership.

Contact listing agents to schedule a tour.



FOR MORE INFORMATION
CONTACT:

LIDDICOAT

Corp. Lic. 02305797

CRE

LORIE LIDDICOAT

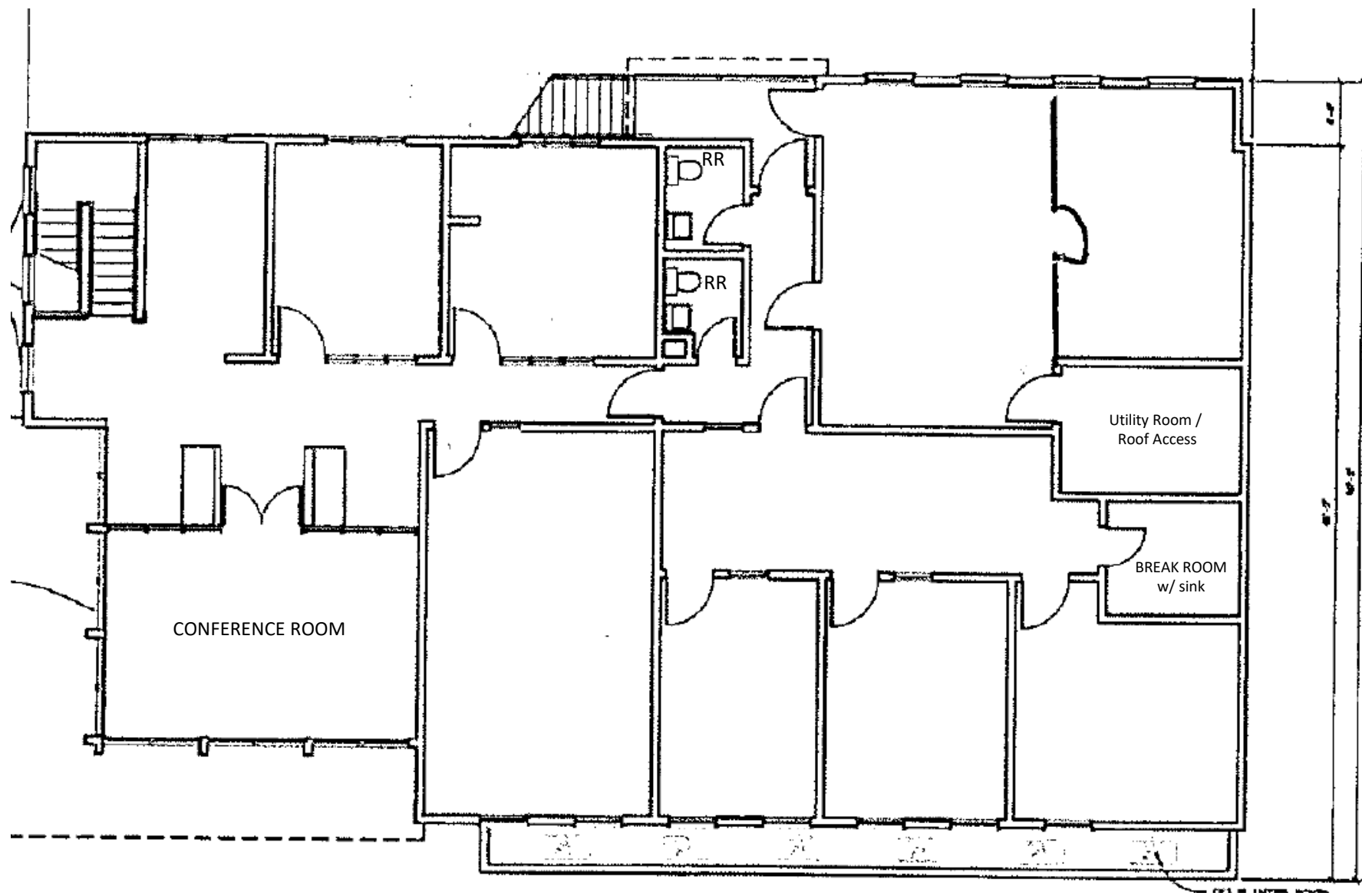
209.915.9913

Lic. 01952818

Lorie@LiddicoatCRE.com

All information found in this marketing package have been gathered from resources believed to be reliable. Brokers and Agents do not warrant, guarantee or represent the accuracy of the Information and recommend that all information be verified prior to a transaction.

2nd Floor – Floor Plan

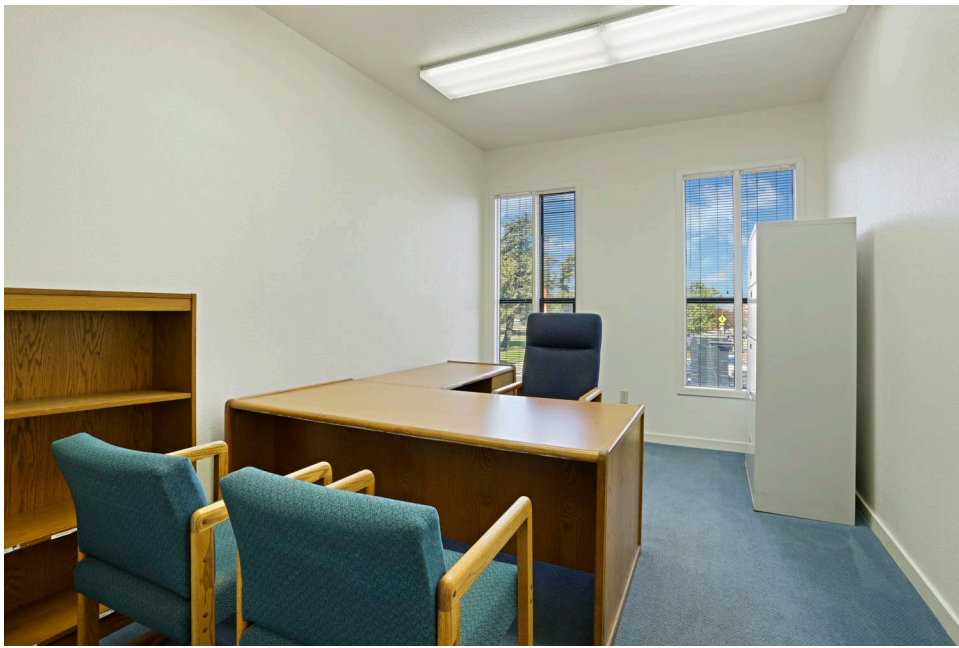


FOR MORE INFORMATION
CONTACT:
LIDDICOAT
Corp. Lic. 02305797



LORIE LIDDICOAT
209.915.9913
Lic. 01952818
Lorie@LiddicoatCRE.com

All information found in this marketing package have been gathered from resources believed to be reliable. Brokers and Agents do not warrant, guarantee or represent the accuracy of the Information and recommend that all information be verified prior to a transaction.



FOR MORE INFORMATION
CONTACT:
LIDDICOAT
Corp. Lic. 02305797



LORIE LIDDICOAT
209.915.9913
Lic. 01952818
Lorie@LiddicoatCRE.com

All information found in this marketing package have been gathered from resources believed to be reliable. Brokers and Agents do not warrant, guarantee or represent the accuracy of the Information and recommend that all information be verified prior to a transaction.



FOR MORE INFORMATION
CONTACT:
LIDDICOAT
Corp. Lic. 02305797



LORIE LIDDICOAT
209.915.9913
Lic. 01952818
Lorie@LiddicoatCRE.com

All information found in this marketing package have been gathered from resources believed to be reliable. Brokers and Agents do not warrant, guarantee or represent the accuracy of the Information and recommend that all information be verified prior to a transaction.

NEIGHBORHOOD BUSINESSES



SOME OF THE MANY MIRACLE MILE MERCHANTS:



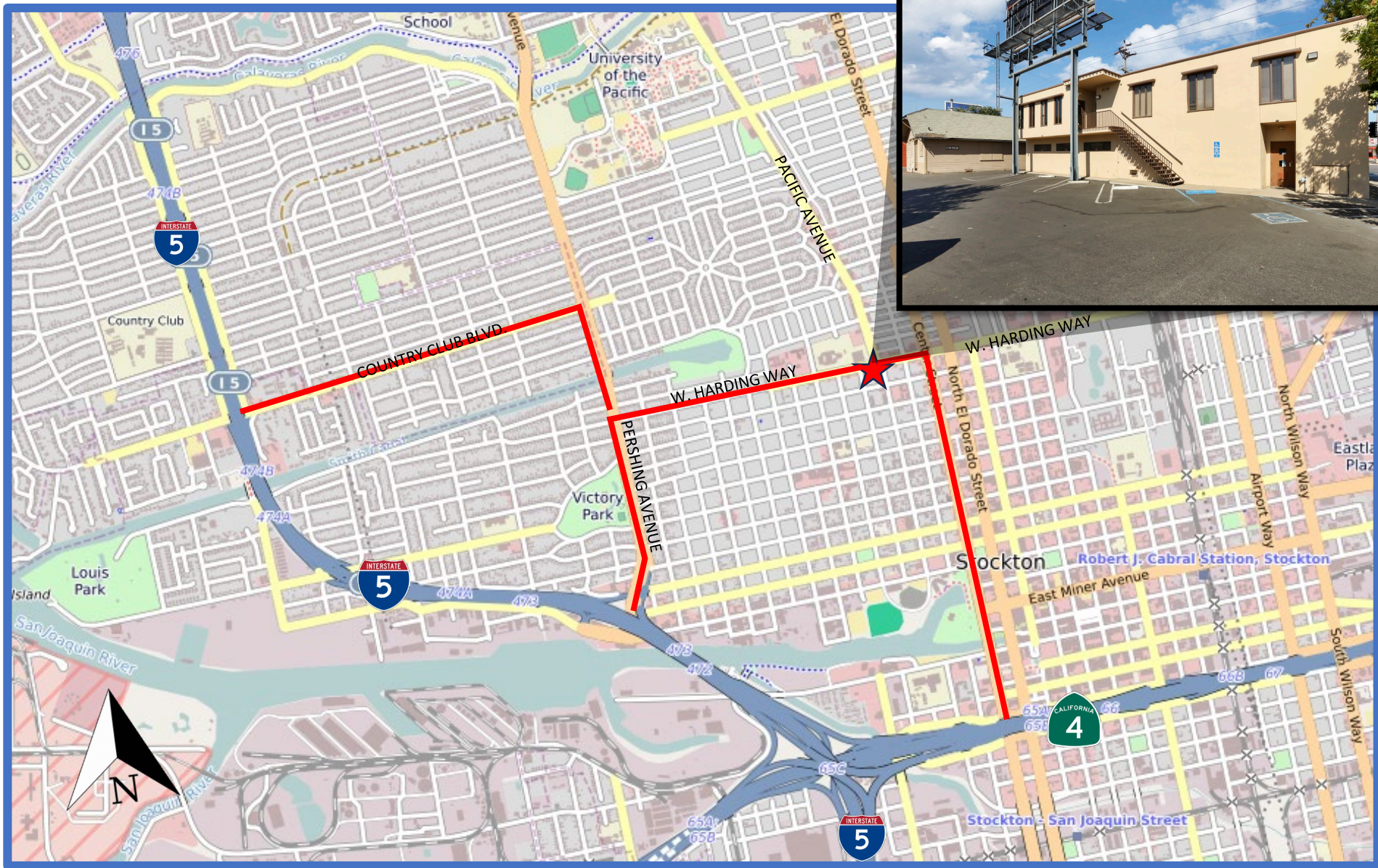
FOR MORE INFORMATION CONTACT:
LIDDICOAT
 Corp. Lic. 02305797



LORIE LIDDICOAT
 209.915.9913
 Lic. 01952818
 Lorie@LiddicoatCRE.com

All information found in this marketing package have been gathered from resources believed to be reliable. Brokers and Agents do not warrant, guarantee or represent the accuracy of the Information and recommend that all information be verified prior to a transaction.

VICINITY MAP & FREEWAY ACCESS ROUTES



FOR MORE INFORMATION
CONTACT:
LIDDICOAT
Corp. Lic. 02305797



LORIE LIDDICOAT
209.915.9913
Lic. 01952818
Lorie@LiddicoatCRE.com

All information found in this marketing package have been gathered from resources believed to be reliable. Brokers and Agents do not warrant, guarantee or represent the accuracy of the Information and recommend that all information be verified prior to a transaction.