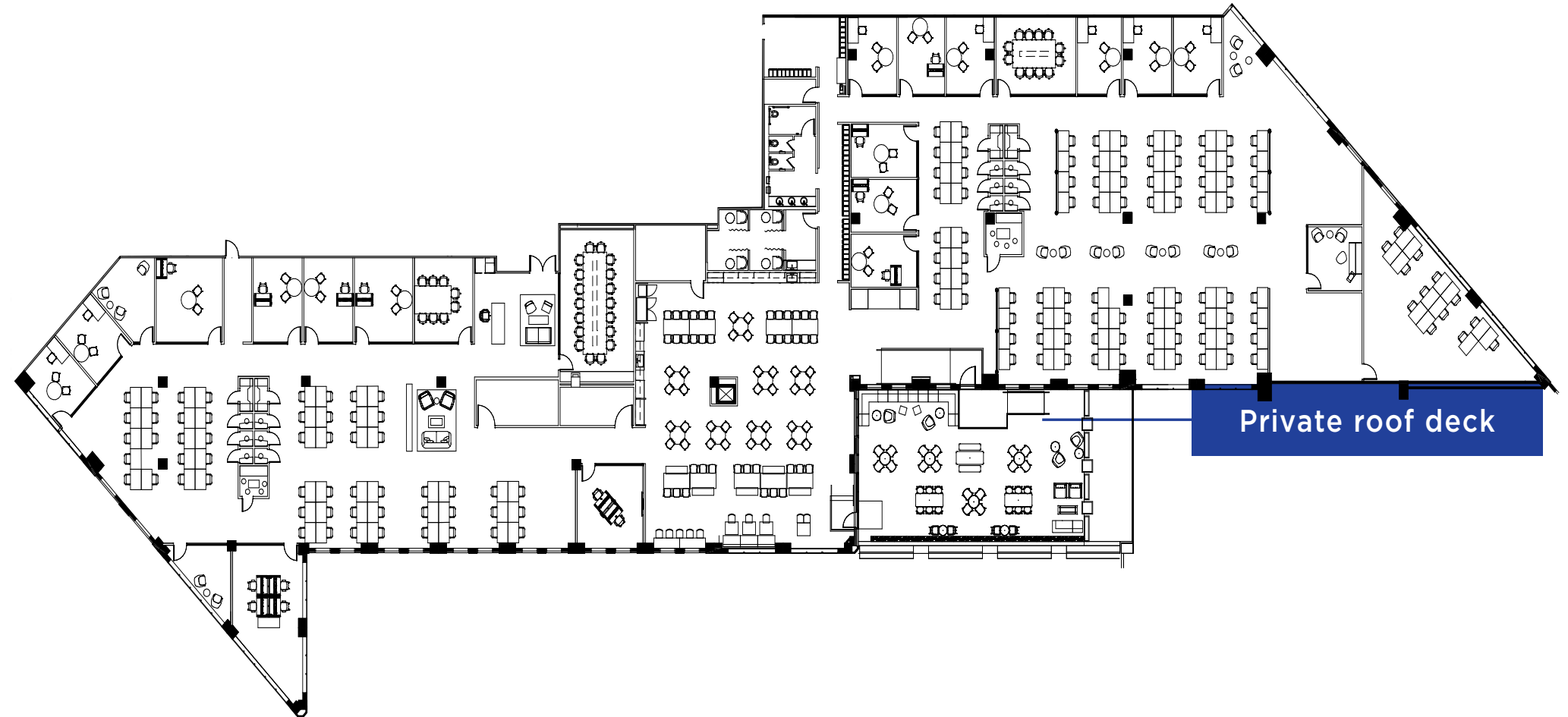


303 SECOND STREET - NORTH TOWER

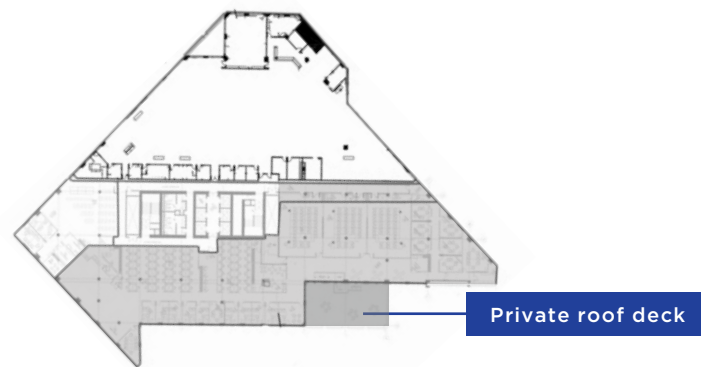
STE 500

*Hypothetical furniture plan

TOTAL RSF	±28,885 RSF
CEILING HEIGHT	11'6"
OCCUPANCY	AVAILABLE NOW
CONDITION	<ul style="list-style-type: none"> • LARGE PRIVATE DECK • OPEN PLAN WITH NEWER FINISHES



FOLSOM STREET



- 24 MEETING ROOMS
- 2 LARGE BOARDROOMS
- 18 PHONE ROOMS
- 126 WORKSTATIONS WITH ROOM FOR MORE