

**FOR LEASE**



# McGinnis Green

Jerome Drive & Route 13 (N. Dupont Highway)  
Cheswold, DE 19901

## Overview

McGinnis Green is a retail development on US-13 in north Dover, Delaware. Anchored by a 185,000 square foot Walmart Supercenter, the development consists of 22,000 square feet of retail space and three pad sites. The development has signalized access and a shared entrance drive with Walmart. Right-in access from northbound Route 13.

## Quick Facts

- Availability** Immediate
- Size** 1,355 & 1,520 square feet (can be combined)  
3,500 square feet
- Net Charges** CAM: \$3.75 psf; INS: \$0.35 psf, TAX: \$1.00 psf;  
Trash charge: \$0.55 psf
- Signage** US-13 Pylon & Monument Signage Available
- Co-Tenants**

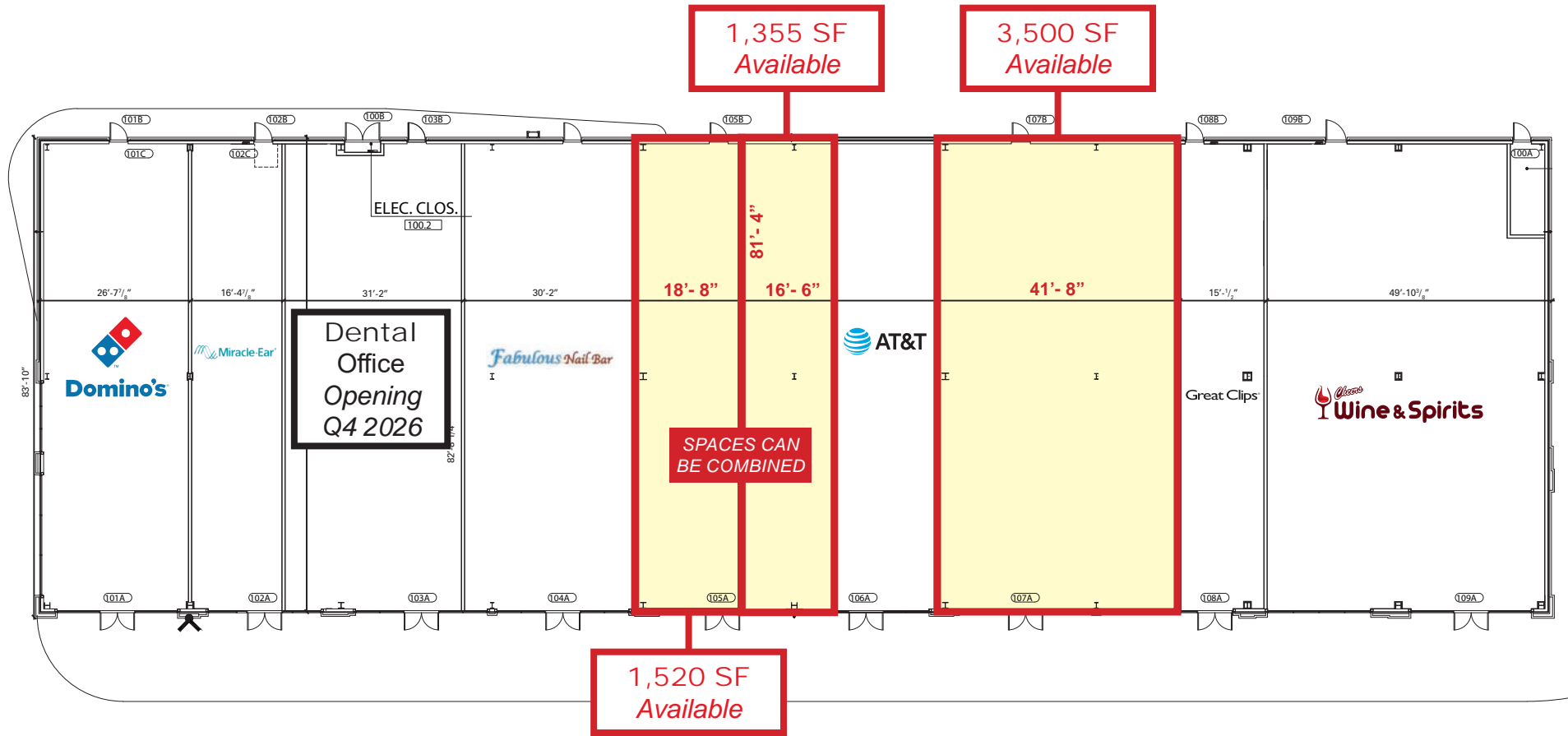


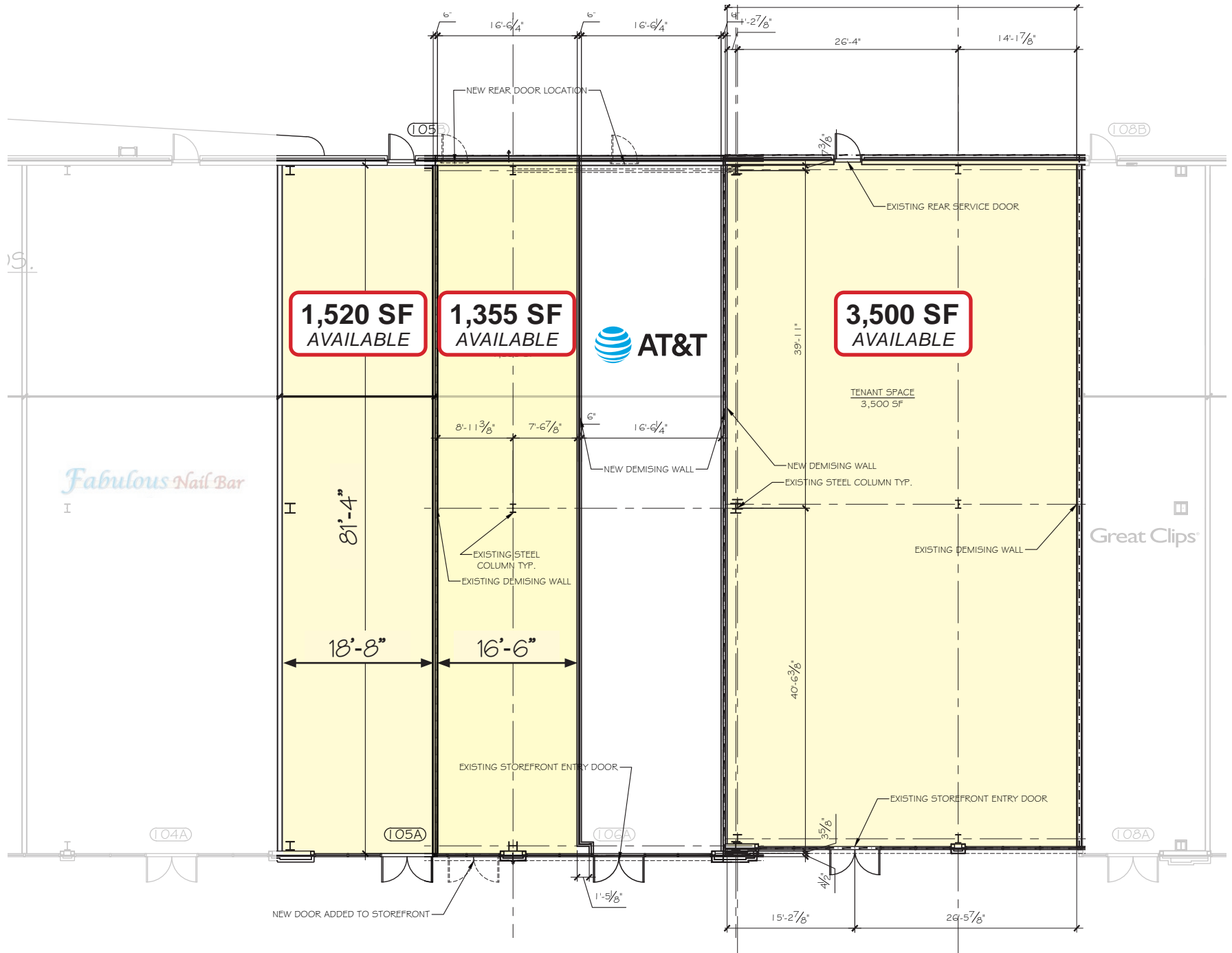
2025 Demographics	3 mile	5 miles	10 miles
POPULATION	19,066	63,836	138,143
HOUSEHOLDS	6,667	23,867	51,170
AVG. HH INCOME	\$104,999	\$95,300	\$98,070
DAYTIME POPULATION	28,892	71,004	160,213
TRAFFIC COUNT	33,067 AADT (N. Dupont Highway)	55,279 AADT (DE Route 1)	

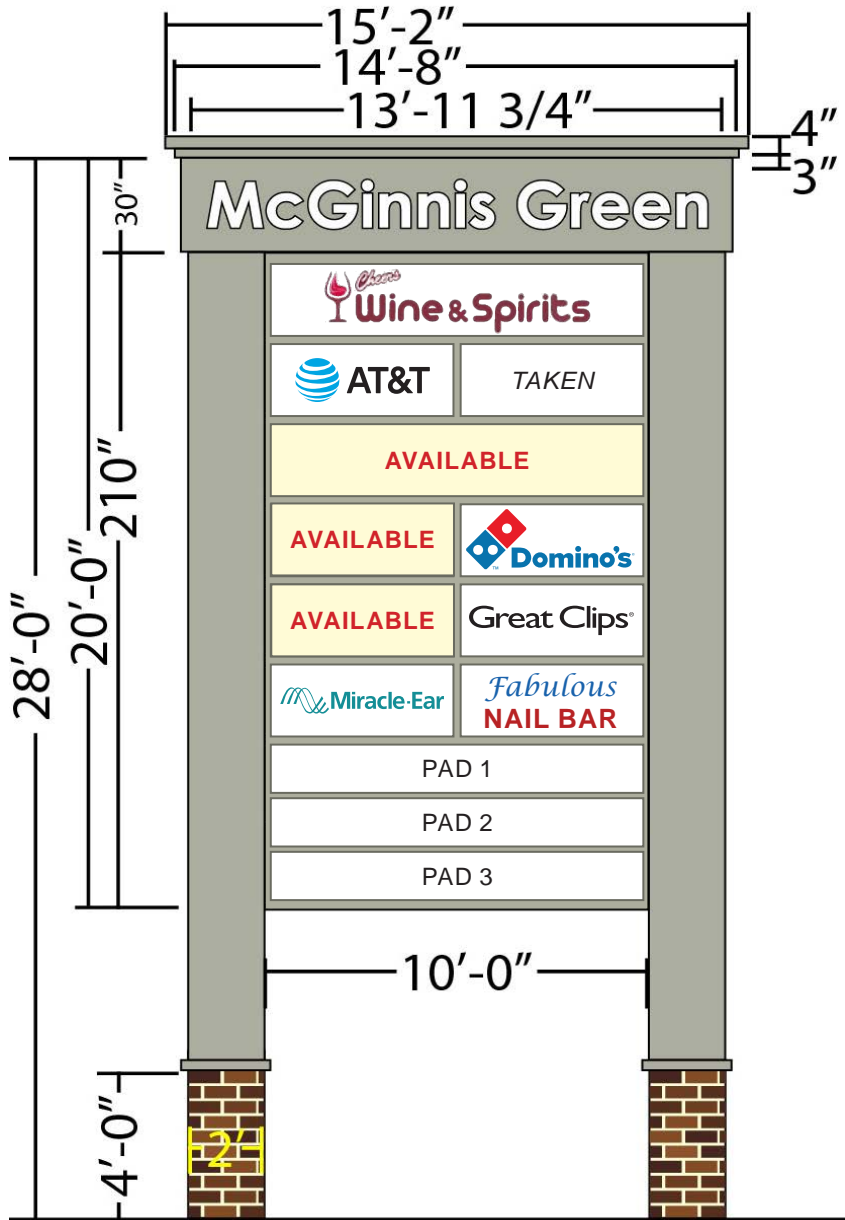
**segall**  
GROUP

COMMERCIAL REAL ESTATE





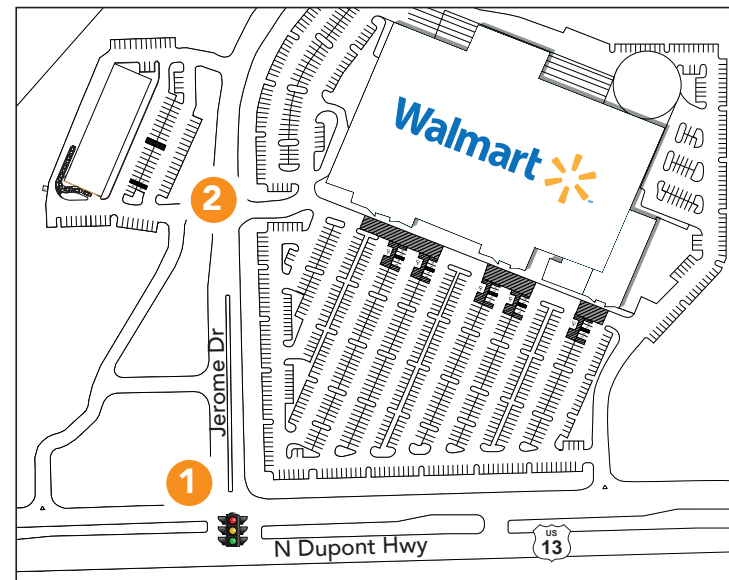




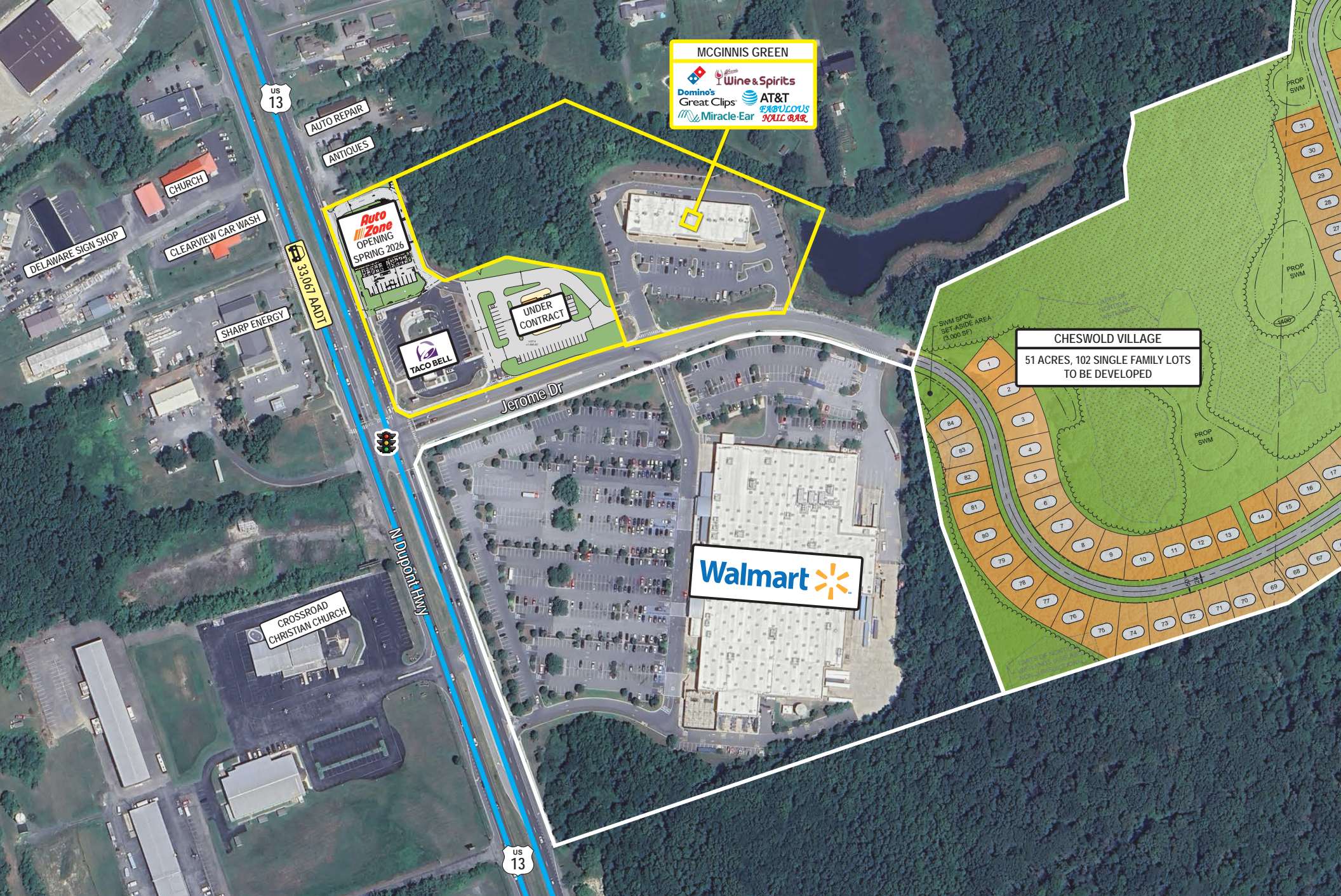
1. Shared Pylon Signage



2. Monument Signage







MCGINNIS GREEN  
Wine & Spirits  
Domino's  
Great Clips  
Miracle-Ear  
AT&T  
FABULOUS  
KALIC BAR

Auto Zone  
OPENING  
SPRING 2026

UNDER  
CONTRACT

TACO BELL


CHESWOLD VILLAGE  
51 ACRES, 102 SINGLE FAMILY LOTS  
TO BE DEVELOPED

Walmart

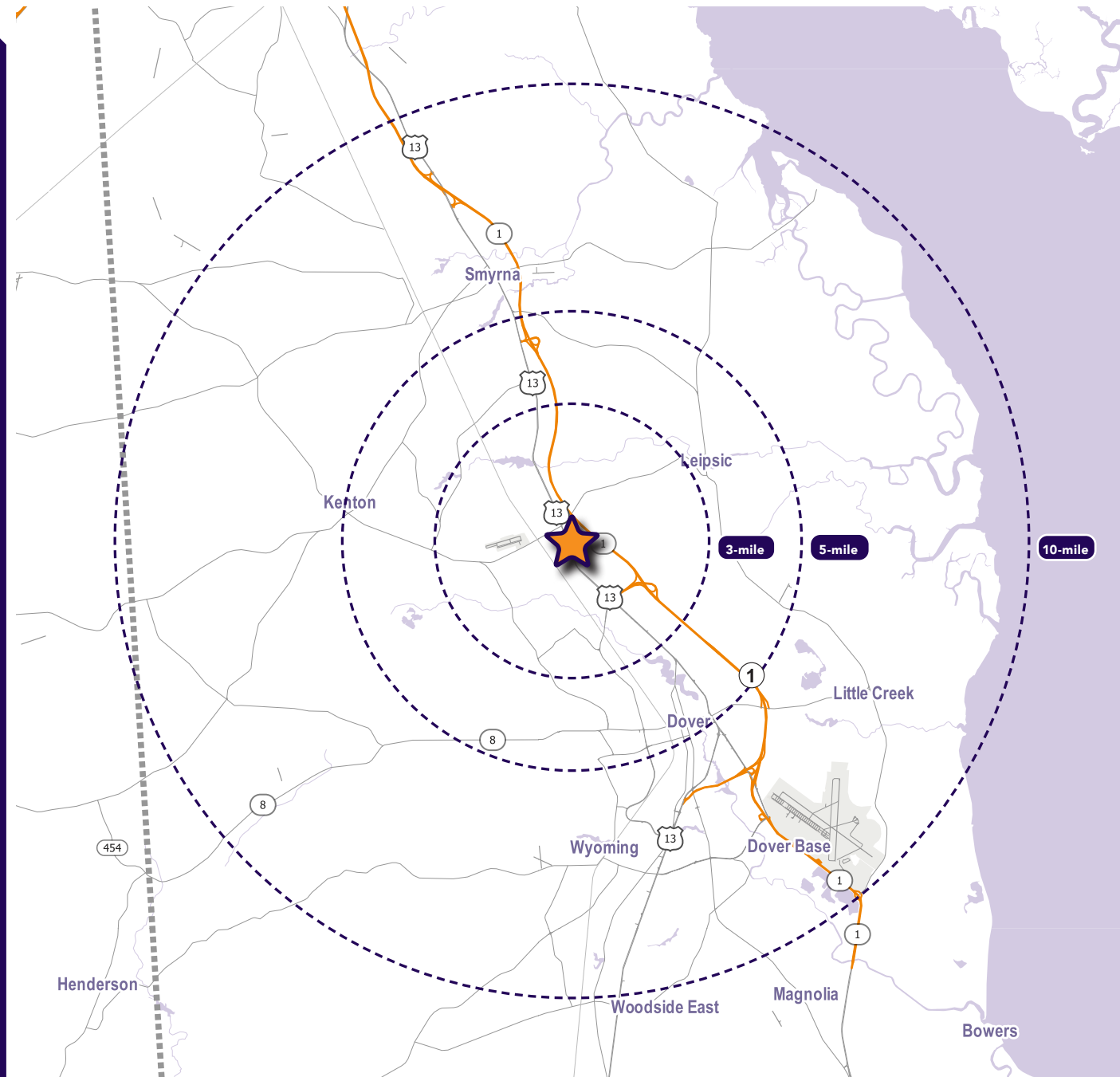
# Interested? Contact:

**Andrew Segall**

 [asegall@segallgroup.com](mailto:asegall@segallgroup.com)

 410.753.3947

 410.960.0361



## Maryland

605 South Eden Street  
Suite 200  
Baltimore, MD 21231  
410.753.3000

## DC • Northern VA

8245 Boone Boulevard  
Suite 200  
Tysons, VA 22182  
202.833.3830

## Richmond

4701 Cox Road  
Suite 100  
Glen Allen, VA 23060  
804.207.4040

## Online

[www.segallgroup.com](http://www.segallgroup.com)

Member of  
**REALTY RESOURCES**

**RETAIL  
READY.**

**segall**  
GROUP