

Unit Size: ± 2,000 SF



PROPERTY DESCRIPTION

- Unit: ± 2,000 SF
- Zoning: C3 General Commercial
- 2 Restrooms
- 1 Office

PROPERTY HIGHLIGHTS

- Located on Holt Blvd, a main thoroughfare.
- Gated parking behind building.
- Proximity to CA 10 and 83 Freeways.

JASON HELLMOLD

Sales Associate

Direct: 909-374-6199

Email: Jasonhellmoldremaxcre@gmail.com

CA DRE LICENSE #02237265

JESSE SANCHEZ

Sales Associate

Direct: 909-235-2776

Email: Jessesanchezremaxcre@gmail.com

CA DRE LICENSE #02092550

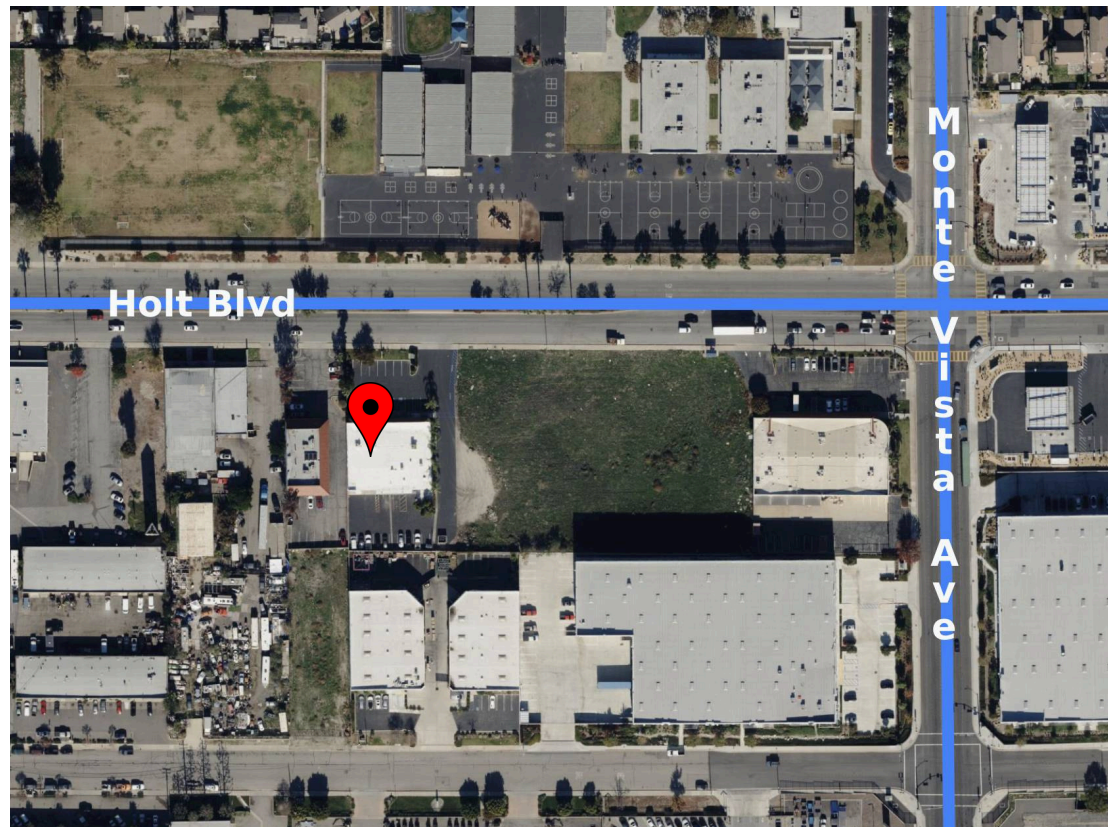
JORGE YAMZON

Senior Vice President / Director

Direct: 626-786-5869

Email: Jorgeyamzon@remax.net

CA DRE LICENSE #01359483



DISCLAIMER

THIS INFORMATION HAS BEEN SECURED FROM SOURCES WE BELIEVE TO BE RELIABLE, BUT WE MAKE NO REPRESENTATIONS OR GUARANTEES, EXPRESSED OR IMPLIED, AS TO THE ACCURACY OF THE INFORMATION. REFERENCES TO SQUARE FOOTAGE OR AGE ARE APPROXIMATE. BUYER MUST VERIFY THE INFORMATION AND BEARS ALL RISK FOR ANY INACCURACIES.