

INDUSTRIAL

388 Dawson Drive, Camarillo



1,540 SF INDUSTRIAL SPACE AVAILABLE FOR LEASE

For More Information
Please Contact:

GRANT HARRIS

805.626.1212
gharris@lee-re.com
www.gharris-re.com
Lic # 01029619

JOHN OCHOA, SIOR

805.626.1208
jochoa@lee-re.com
www.johnchoa-re.com
Lic # 00986604

www.lee-associates.com

Lee & Associates - LA North/Ventura, Inc.
Corporate ID #01191898
A Member of the Lee & Associates
Group of Companies
2775 N Ventura Road, Suite 201
Oxnard, CA 93036



COMMERCIAL REAL ESTATE SERVICES

No warranty or representation is made to the accuracy of the foregoing information. Terms of sale or lease and availability are subject to change or withdrawal without notice.

PROPERTY HIGHLIGHTS

- Multi-Tenant Industrial Building | 1,540 SF Unit Available
- M-1 Zoning
- Within 1 Mile of 101 Freeway
- Available April 1, 2026
- **Lease Rate:** \$1.45 PSF Industrial Gross*

* Plus a \$0.08 per square foot Common Area Maintenance (CAM) fee. \$225.00/yr HVAC maintenance fee. \$50 non-refundable key deposit.



INDUSTRIAL

388 Dawson Drive, Camarillo

PROPERTY SPECIFICATIONS

Available SF	1,540	Year Built	1970
Total Bldg SF	POL	Power	100A 120/208V Ø3 W4
Land SF	POL	Loading	(1) GL (10'W x 10'H)
Office SF	170	Min Clear Ht	12' 10"
Zoning	M-1	Parking	2 Spaces

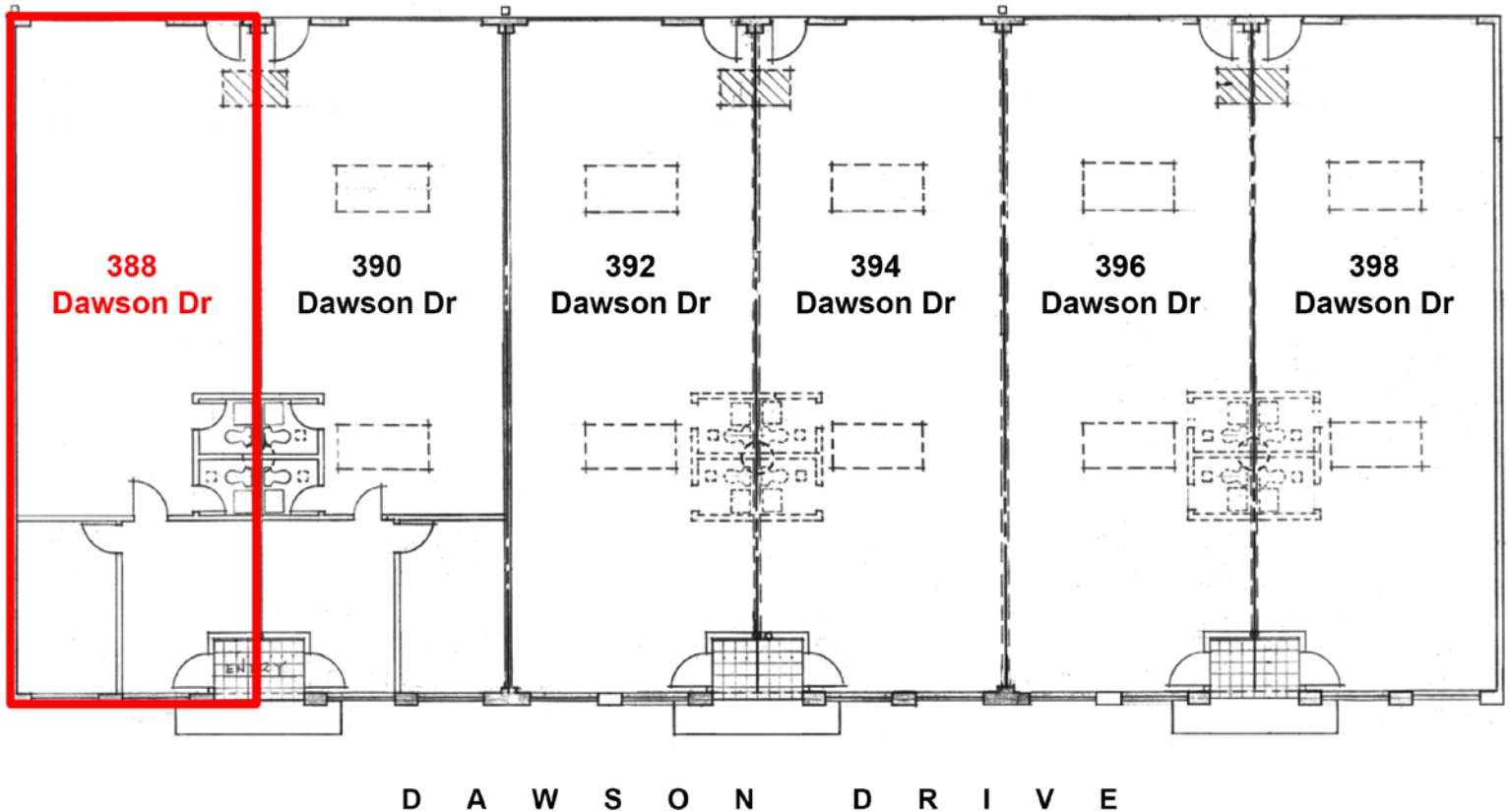
LEASE INFORMATION

Square Feet	1,540
Lease Rate Per Mo	\$2,079
Lease Rate PSF	\$1.45*

* Plus a \$0.08 per square foot Common Area Maintenance (CAM) fee. \$225.00/yr HVAC maintenance fee. \$50 non-refundable key deposit.

Tenant to verify all information.

SITE PLAN



NOT TO SCALE