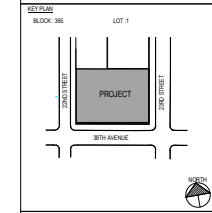


NO.	DATE	ISSUE OR REVISION
1	05/12/12	ISSUE FOR DOB APPROVAL
1	10/17/2012	REVISIONS AS PER DOB COMMENTS
2	08/12/2013	BULLETIN 1 ISSUE FOR CONSTRUCTION
3	01/14/2014	BULLETIN 5
4	02/07/2014	BULLETIN 8
5	01/23/2015	BULLETIN 11
6	02/09/2016	ISSUE FOR POST APPROVAL AMENDMENT
7	06/04/2016	ISSUE FOR POST APPROVAL AMENDMENT #3



FARRELL PROPERTIES LLC
22-11 38TH AVENUE, LONG ISLAND CITY
CLIENT REPRESENTATIVE
1940 AVENUE OF THE AMERICANS, NEW YORK, NY 10018-4796

ARCHITECT
HILW INTERNATIONAL LLP
115 FIFTH AVENUE, 5TH FLOOR - NEW YORK, NY 10003

STRUCTURAL ENGINEER
HILW INTERNATIONAL LLP
115 FIFTH AVENUE, 5TH FLOOR - NEW YORK, NY 10003

MECHANICAL ENGINEER
HILW INTERNATIONAL LLP
115 FIFTH AVENUE, 5TH FLOOR - NEW YORK, NY 10003

ELECTRICAL ENGINEER
HILW INTERNATIONAL LLP
115 FIFTH AVENUE, 5TH FLOOR - NEW YORK, NY 10003

PLUMBING ENGINEER
HILW INTERNATIONAL LLP
115 FIFTH AVENUE, 5TH FLOOR - NEW YORK, NY 10003

MECHANICAL CONSULTANT
HILW INTERNATIONAL LLP
115 FIFTH AVENUE, 5TH FLOOR - NEW YORK, NY 10003

STRUCTURAL CONSULTANT
HILW INTERNATIONAL LLP
115 FIFTH AVENUE, 5TH FLOOR - NEW YORK, NY 10003

MECHANICAL CONSULTANT
HILW INTERNATIONAL LLP
115 FIFTH AVENUE, 5TH FLOOR - NEW YORK, NY 10003

ELECTRICAL CONSULTANT
HILW INTERNATIONAL LLP
115 FIFTH AVENUE, 5TH FLOOR - NEW YORK, NY 10003

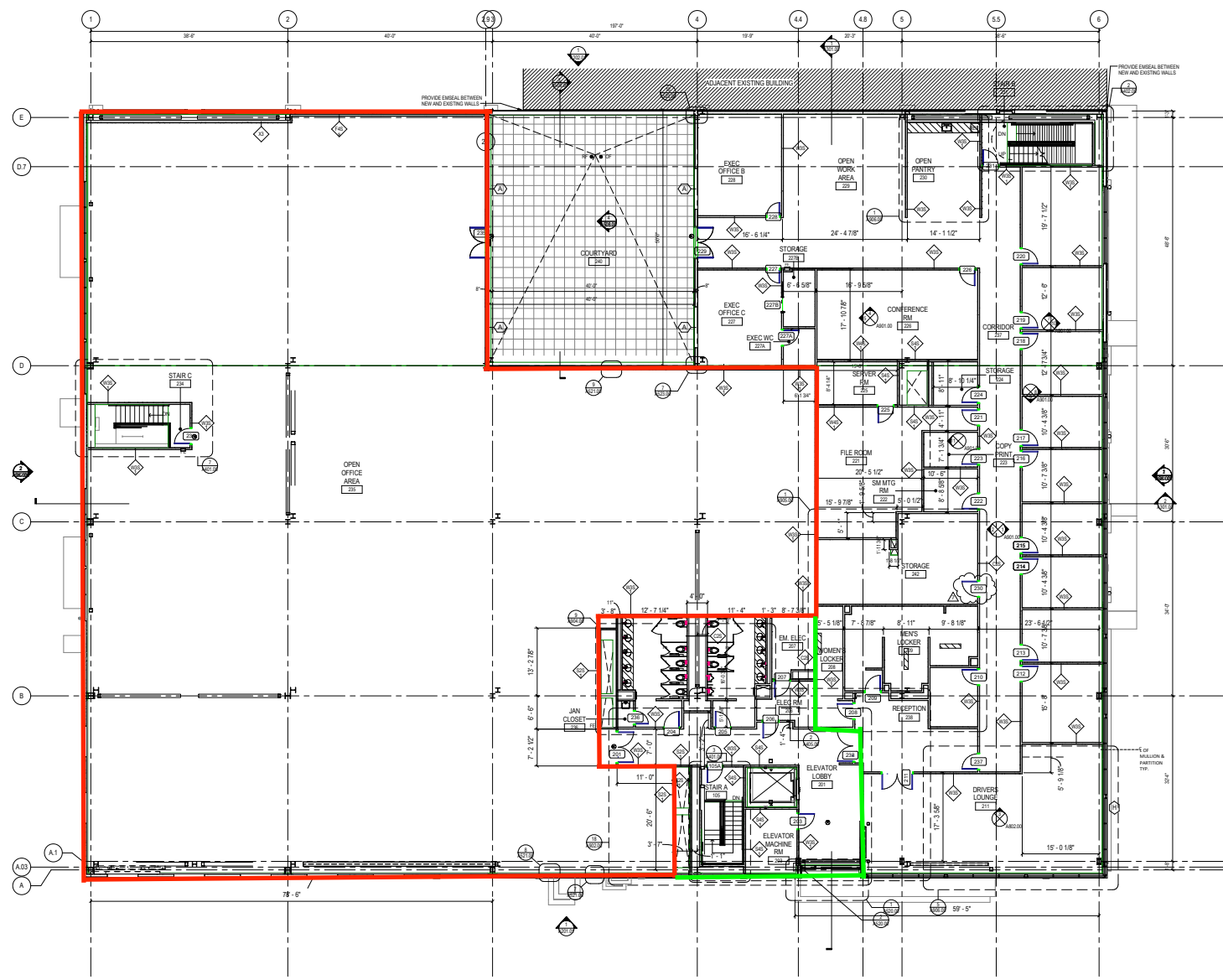
PLUMBING CONSULTANT
HILW INTERNATIONAL LLP
115 FIFTH AVENUE, 5TH FLOOR - NEW YORK, NY 10003

HILW International LLP
Architects
Engineers
Interior
Planning
Consulting

110 W. Avenue
New York, NY 10003
Phone: 212 693 4800
Fax: 212 693 4844

DRAWING NO.
SECOND FLOOR CONSTRUCTION PLAN

DATE:	02/09/16	PROJECT NO.:	2010-0095
SCALE:	1/8" = 1'-0"		
DRAWN BY:	Author		
DRAWING NO.:	A102.03		
	SHEET NO.		



1 SECOND FLOOR PLAN
18"x12"

F E D C B A