



4211 Kingsway | Burnaby, BC

First-Class Office Space in Proximity to Metrotown For Lease

Burnaby Centre

Opportunity to lease office space across from Central Park, within walking distance from two SkyTrain stations, Metrotown Shopping Centre, and many other popular dining and retail locations. The building includes access to fitness and pool facilities.

Rob DesBrisay
Managing Partner
604 691 6602
rdesbrisay@naicommercial.ca

Jesse Godin
Senior Associate
604 691 6636
jgodin@naicommercial.ca

NAI Commercial
1075 W Georgia St, Suite 1300
Vancouver, BC V6E 3C9
+1 604 683 7535
naicommercial.ca

4211 Kingsway, Burnaby, BC

Location

Located at the corner of Kingsway and Barker Avenue, Burnaby Centre acts as a pillar on the gateway to Burnaby. The renovated building offers excellent exposure and street-front appeal.

Proximity to local amenities including attached retail mall and Metrotown Shopping Centre. Frequent bus service, SkyTrain, and all major highways within three kilometres provide numerous options for commuting.

This building offers a unique leasing opportunity, great location, with amazing mountain and city views. After-hour card access along with secured underground parking makes this an ideal location for most types of businesses.

Available Units

Unit	Lease Rate	Add'l Rent (2025 est.)	Availability	Size
M11	\$23.00/SF	\$14.89/SF	Immediate	5,379 SF
308	\$20.00/SF	\$16.53/SF	Immediate	2,369 SF
400	\$20.00/SF	\$16.53/SF	Jan 1 st , 2027	4,235 SF
700	\$28.00/SF	\$16.53/SF	Immediate	5,500 SF

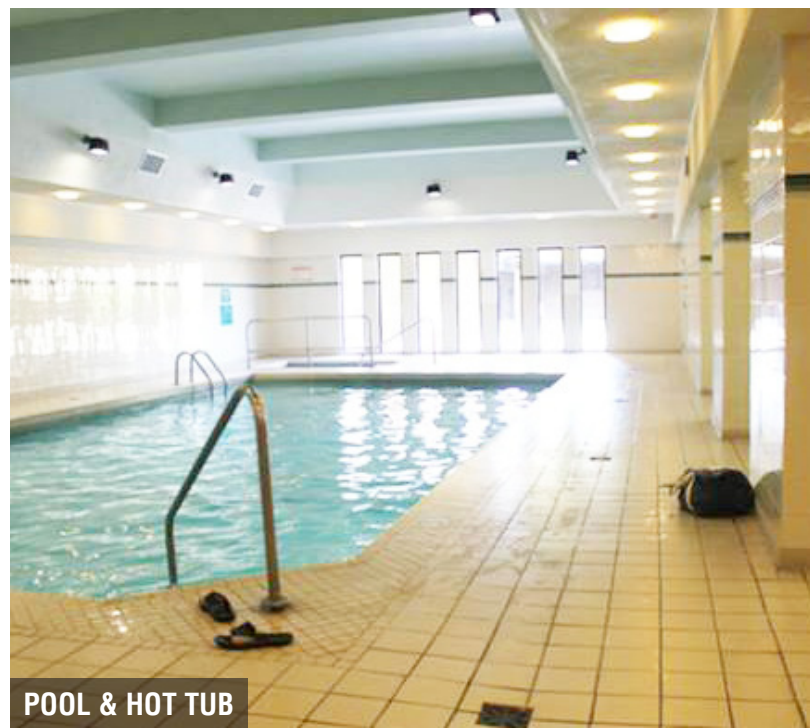
Property Details

Parking

3 stalls per 1,000 SF at \$90.00 per stall per month plus taxes

Features

- ▶ Two SkyTrain stations within walking distance
- ▶ Walking distance to Metrotown, retail and restaurants
- ▶ Directly across from Central Park
- ▶ Recently renovated lobby
- ▶ Access to fitness facility, pool and hot tub
- ▶ Local retail attached directly to the tower
- ▶ Amazing views



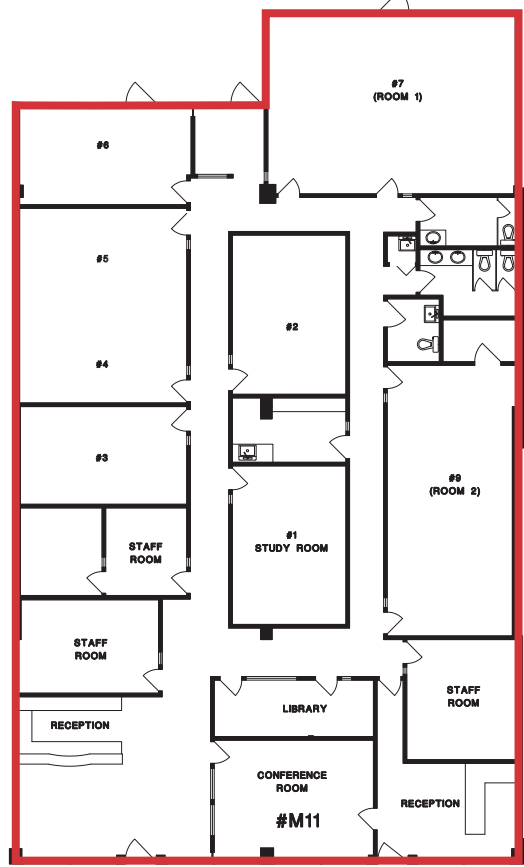
BUILDING LOBBY

POOL & HOT TUB

Floor Plans

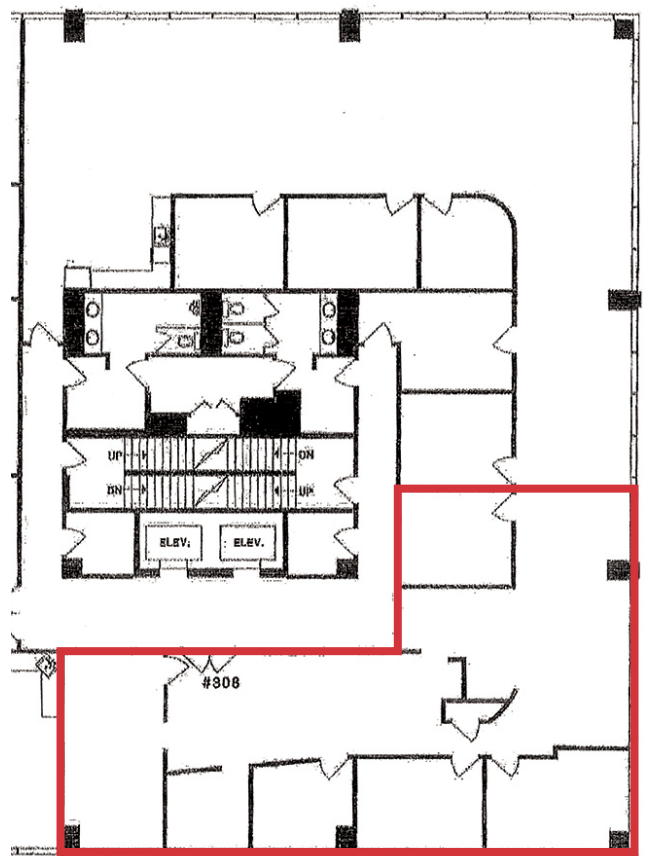
Unit M11

5,379 SF



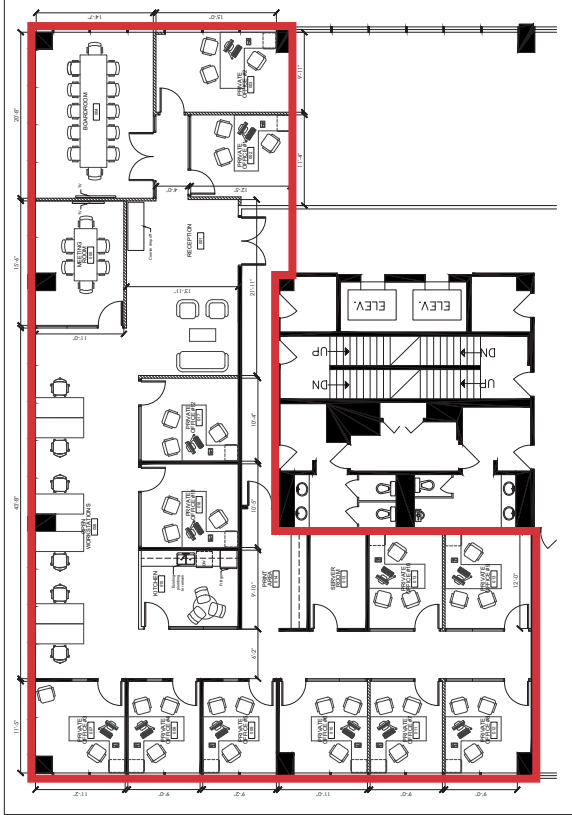
Unit 308

2,369 SF



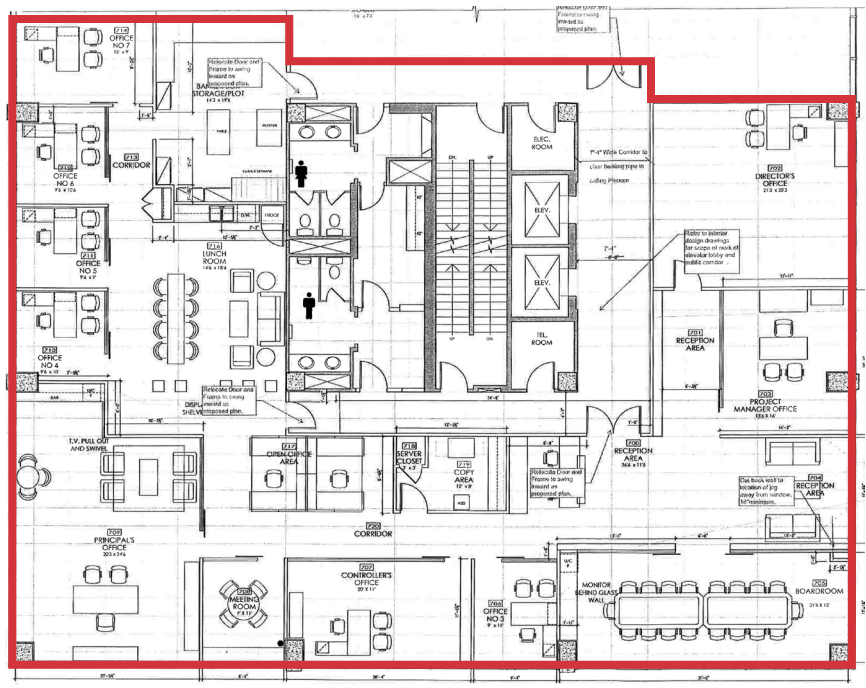
Unit 400

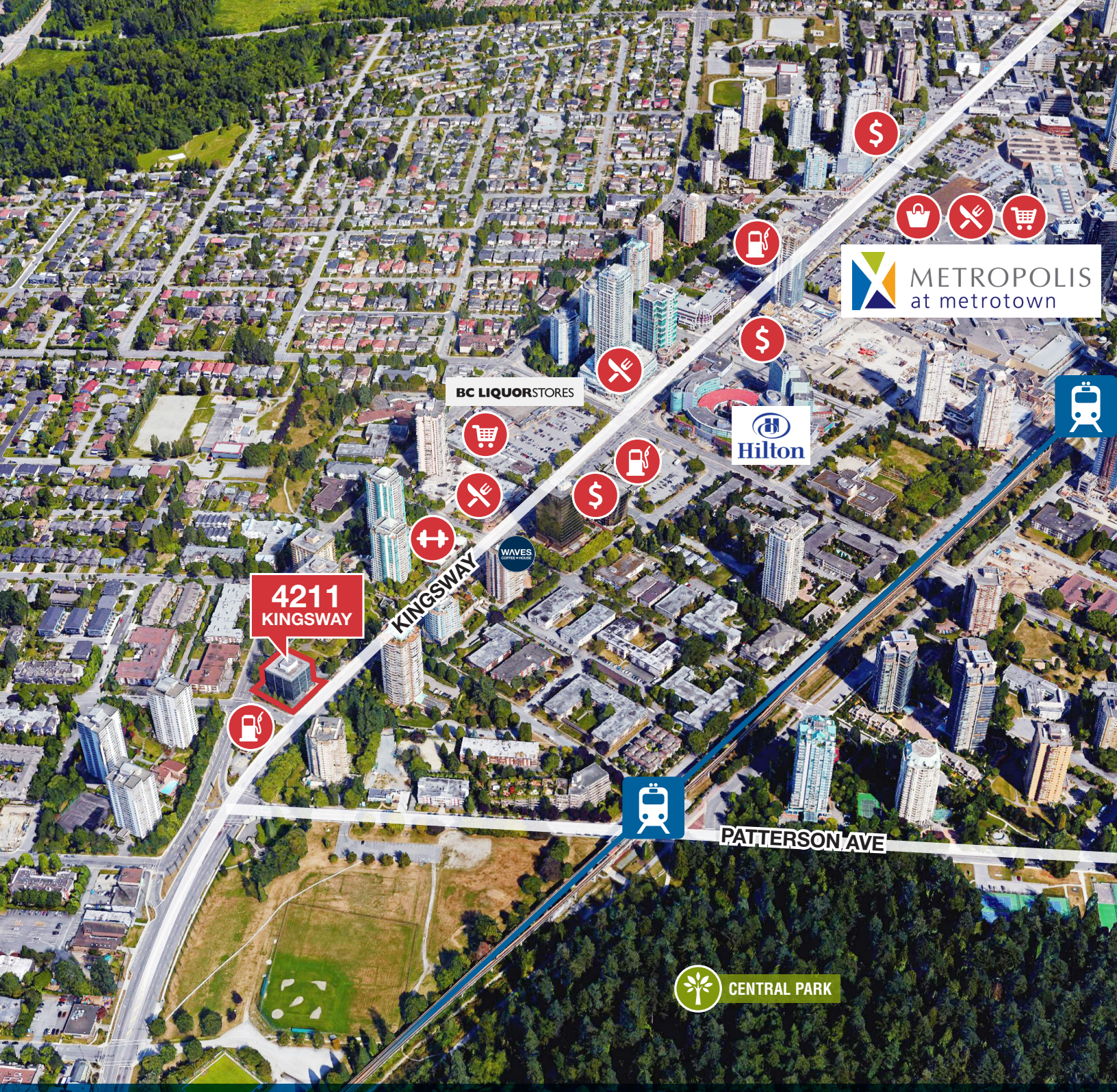
4,235 SF



Unit 700

5,500 SF





4211
KINGSWAY

KINGSWAY

PATTERSON AVE

CENTRAL PARK

Hilton

BC LIQUOR STORES

METROPOLIS
at metrotown

Rob DesBrisay
Managing Partner
604 691 6602
rdesbrisay@naicommercial.ca

Jesse Godin
Senior Associate
604 691 6636
jgodin@naicommercial.ca

NAICommercial

No warranty or representation, express or implied, is made as to the accuracy of the information contained herein, and the same is submitted subject to errors, omissions, change of price, rental or other conditions, prior sale, lease or financing, or withdrawal without notice, and of any special listing conditions imposed by our principals no warranties or representations are made as to the condition of the property or any hazards contained therein are any to be implied. Aerial image courtesy of Google, Landsat/Copernicus

NAI Commercial
1075 W Georgia St, Suite 1300
Vancouver, BC V6E 3C9
+1 604 683 7535
naicommercial.ca