

FOR LEASE

BALTIMORE COUNTY, MD

3110 LORD BALTIMORE DR

EXECUTIVE PARK WEST | 3100-3300 LORD BALTIMORE DRIVE | WINDSOR MILL, MD 21244



PROPERTY HIGHLIGHTS:

- ▶ FITNESS CENTER AND CONFERENCE ROOM ON-SITE
- ▶ TOTAL OF 450,000 SQUARE FEET IN TWELVE BUILDINGS IN THIS GATED BUSINESS PARK
- ▶ PROMINENT BUILDING SIGNAGE AVAILABLE FRONTING LORD BALTIMORE DRIVE
- ▶ WITHIN 3 MILES OF SOCIAL SECURITY ADMINISTRATION HEADQUARTERS AND CENTERS FOR MEDICARE AND MEDICAID SERVICES
- ▶ WITHIN 2 MILES OF BELTWAY EXIT 17 AT SECURITY BOULEVARD
- ▶ WITHIN 1/4 MILE OF BELTWAY EXIT 18 AT LIBERTY ROAD

DAVID S. BROWN
ENTERPRISES, LTD.

KEVIN KEANE | SVP, OFFICE LEASING
410.581.2519 | KEVIN@DAVIDSBROWN.COM

BRENT MANGUM | VP, OFFICE LEASING
410.581.2518 | BRENT@DAVIDSBROWN.COM

NOAH ADLER | LEASING ASSOCIATE
410.581.2510 | NADLER@DAVIDSBROWN.COM

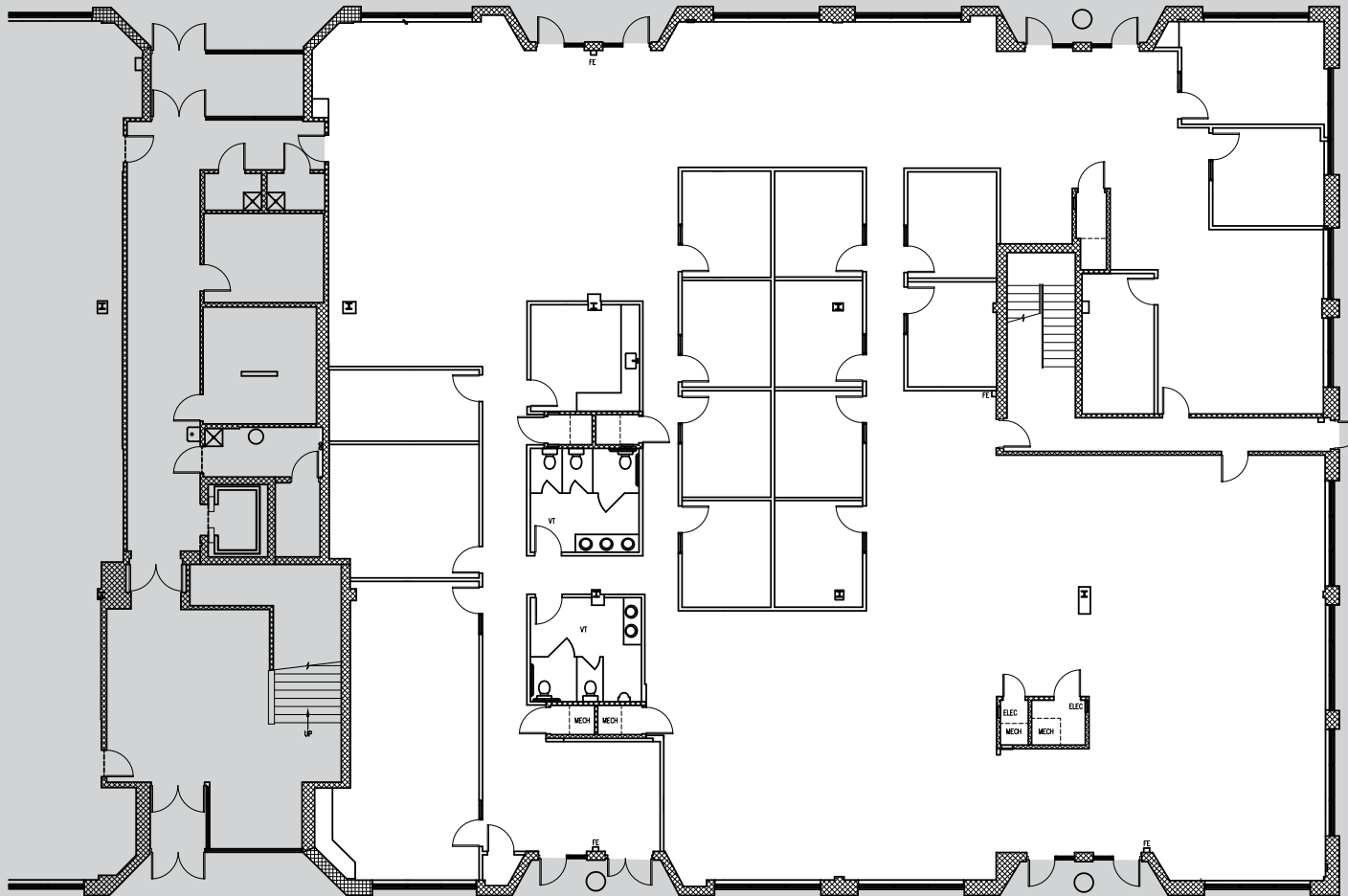
DAVID S. BROWN ENTERPRISES | 100 PAINTERS MILL ROAD, OWINGS MILLS, MD 21117 | 410.581.2520 | WWW.DAVIDSBROWN.COM |

FOR LEASE

BALTIMORE COUNTY, MD

3110 LORD BALTIMORE DR

EXECUTIVE PARK WEST | 3100-3300 LORD BALTIMORE DRIVE | WINDSOR MILL, MD 21244



AVAILABLE

► SUITES 104, 107 & 117 - 10,733 SF

FOR LEASE

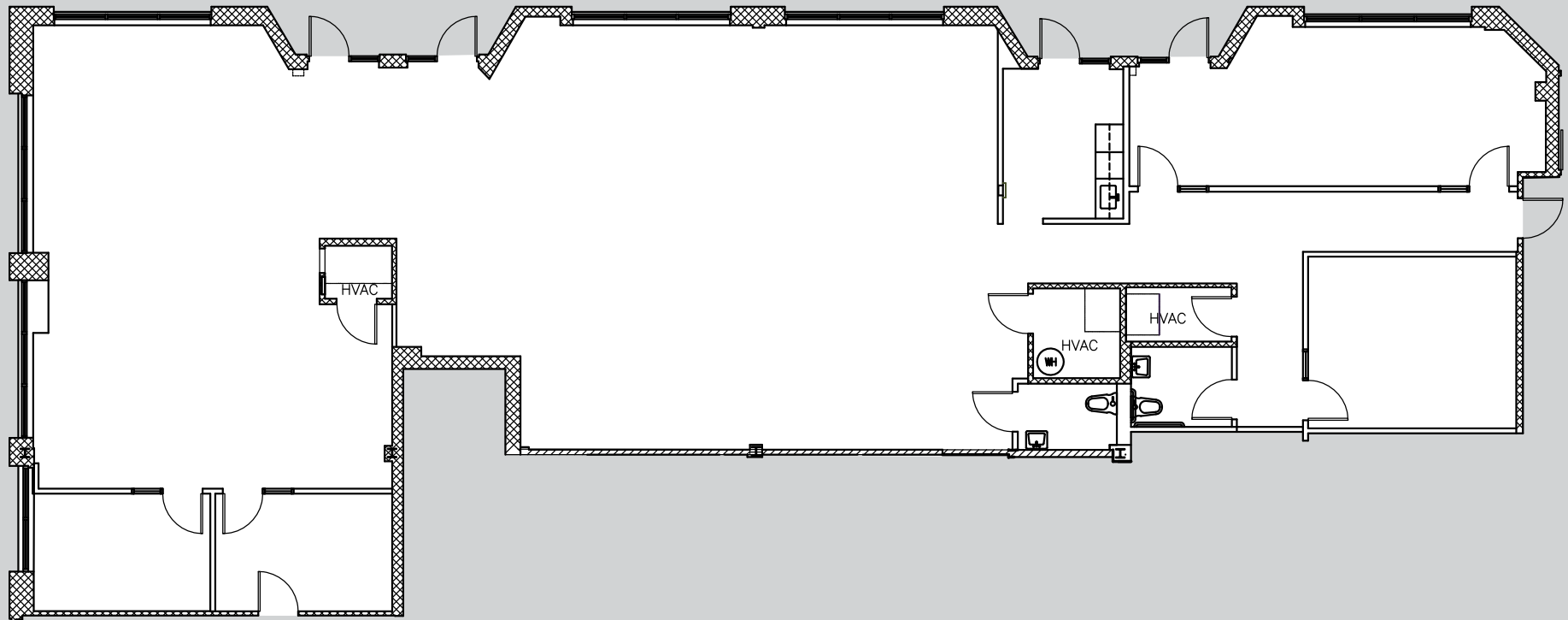
B BALTIMORE COUNTY, MD

3110 LORD BALTIMORE DR

EXECUTIVE PARK WEST | 3100-3300 LORD BALTIMORE DRIVE | WINDSOR MILL, MD 21244

AVAILABLE

▶ SUITES 110-113 - 3,921 SF



B DAVID S. BROWN
ENTERPRISES, LTD.

KEVIN KEANE | SVP, OFFICE LEASING

410.581.2519 | KEVIN@DAVIDSBROWN.COM

BRENT MANGUM | VP, OFFICE LEASING

410.581.2518 | BRENT@DAVIDSBROWN.COM

NOAH ADLER | LEASING ASSOCIATE

410.581.2510 | NADLER@DAVIDSBROWN.COM

FOR LEASE

B BALTIMORE COUNTY, MD

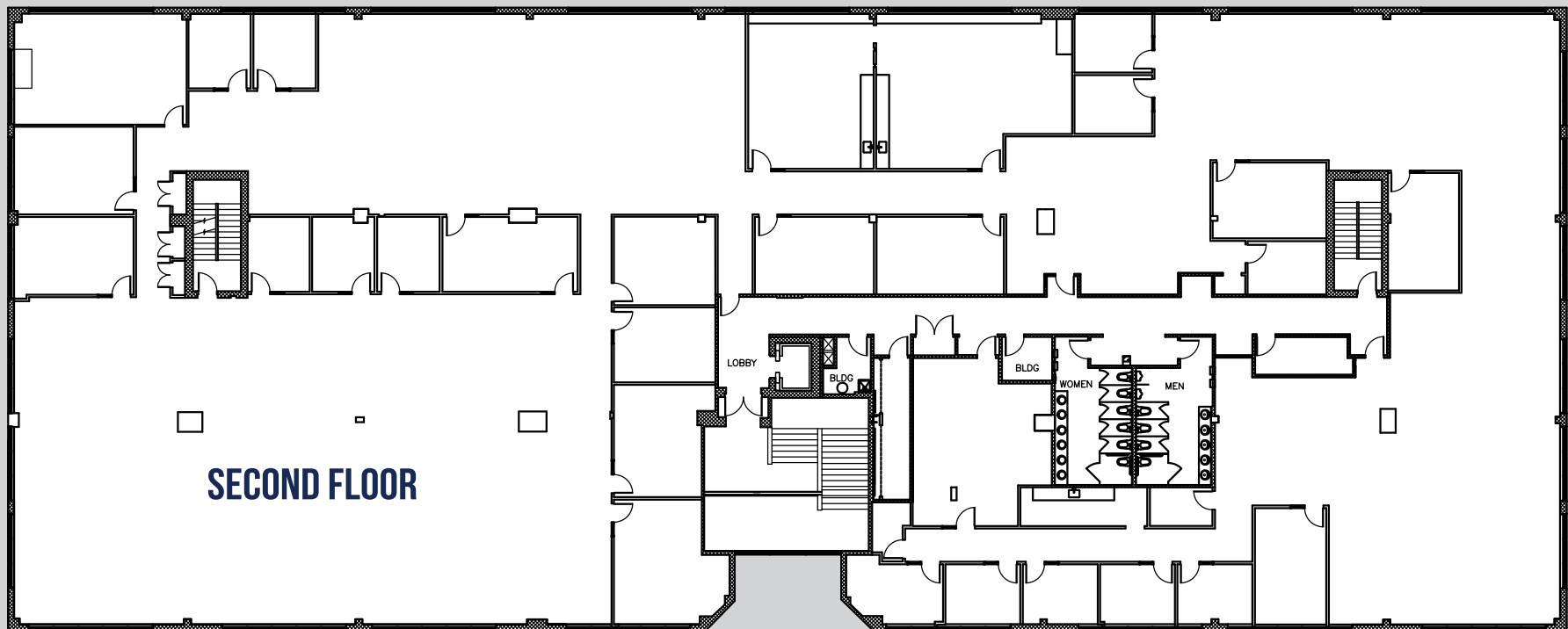
3110 LORD BALTIMORE DR

EXECUTIVE PARK WEST | 3100-3300 LORD BALTIMORE DRIVE | WINDSOR MILL, MD 21244

AVAILABLE

▶ SECOND FLOOR - UP TO 23,860 SF

SUITE 200 VIRTUAL TOUR ▶



3110 LORD BALTIMORE DR

EXECUTIVE PARK WEST | 3100-3300 LORD BALTIMORE DRIVE | WINDSOR MILL, MD 21244

MAP

