



AVAILABLE FOR LEASE

1200 Roosevelt Road
Glen Ellyn, Illinois 60137

One Oakbrook Terrace
Suite 400
Oakbrook Terrace, Illinois 60181
+1 630 932 1234

hiffman.com

PROPERTY HIGHLIGHTS

52,400 SF office building with rare full floor vacancy available for lease (up to 23,910 SF contiguous across two floors). Property is highly visible on Roosevelt Road with close proximity to local amenities and restaurants.



FULL FLOOR VACANCY
AVAILABLE



UNDERGROUND
COVERED PARKING
AVAILABLE

Contact

Jason Wurtz
+1 630 693 0692
jwurtz@hiffman.com

Bennett Baker
+1 630 317 0751
bbaker@hiffman.com

Sarah Walker
+1 630 389 8911
swalker@hiffman.com



CLOSE PROXIMITY TO
AMENITIES



3.33 / 1,000 SF
PARKING RATIO



IMMEDIATE ACCESS
TO I-355



PRIME LOCATION OFF ROOSEVELT
ROAD WITH ACCESS TO PUBLIC
TRANSPORTATION

NO WARRANTY OR REPRESENTATION, EXPRESS OR IMPLIED, IS MADE AS TO THE ACCURACY OF THE INFORMATION CONTAINED HEREIN, AND THE SAME IS SUBMITTED SUBJECT TO ERRORS, OMISSIONS, CHANGE OF PRICE, RENTAL OR OTHER CONDITIONS, PRIOR SALE, LEASE OR FINANCING, OR WITHDRAWAL WITHOUT NOTICE, AND OF ANY SPECIAL LISTING CONDITIONS IMPOSED BY OUR PRINCIPALS NO WARRANTIES OR REPRESENTATIONS ARE MADE AS TO THE CONDITION OF THE PROPERTY OR ANY HAZARDS CONTAINED THEREIN ARE ANY TO BE IMPLIED.

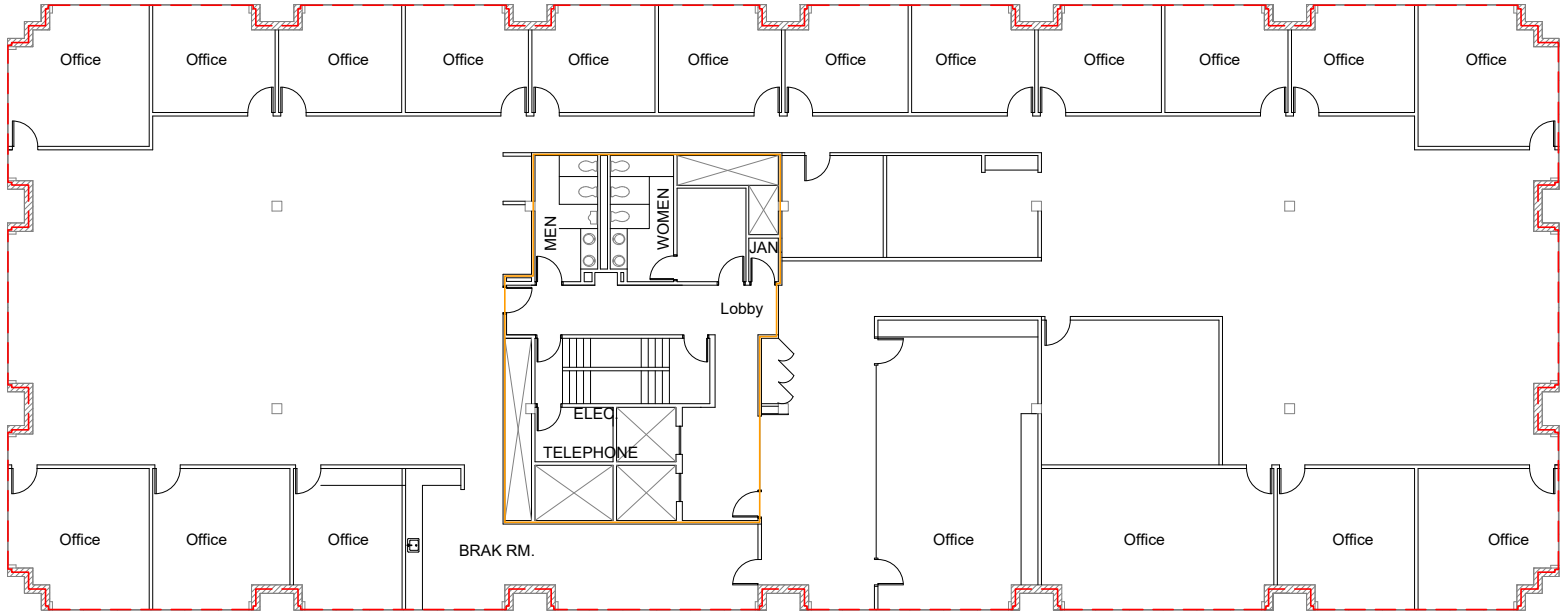


23,910 SF AVAILABLE CONTIGUOUS

SPACE AVAILABLE

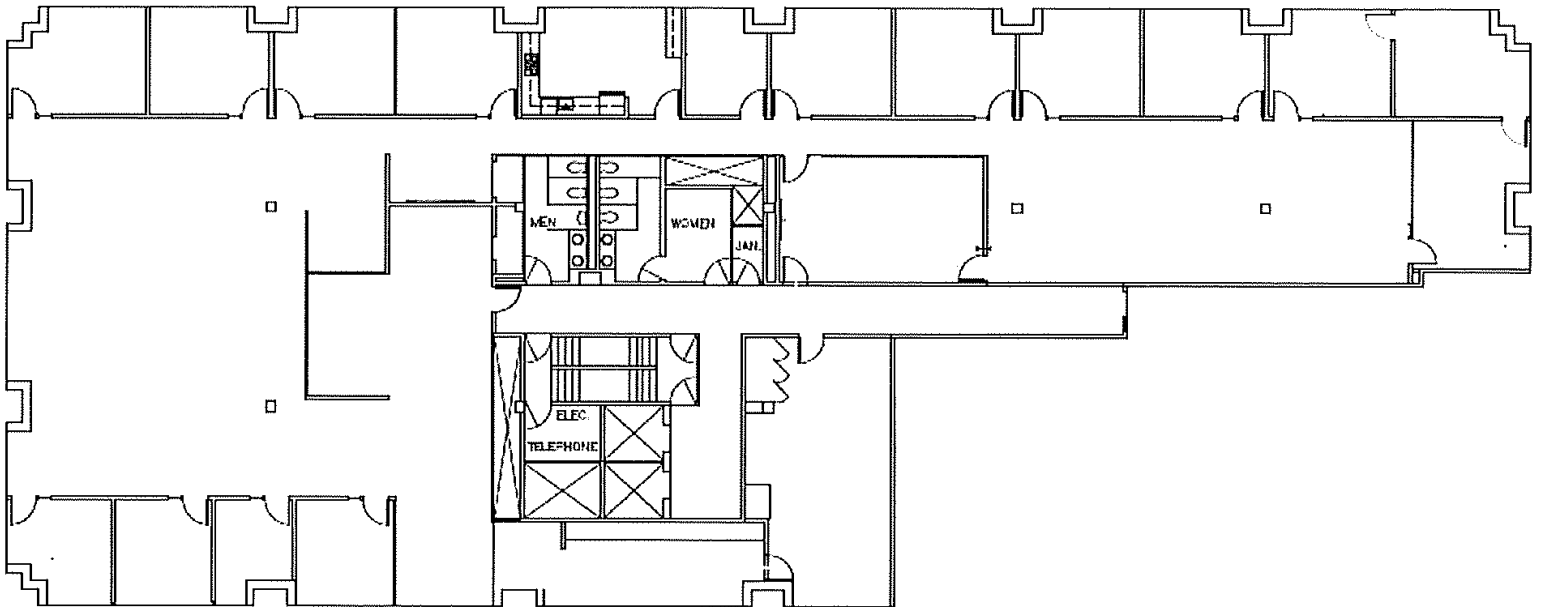
FOURTH FLOOR

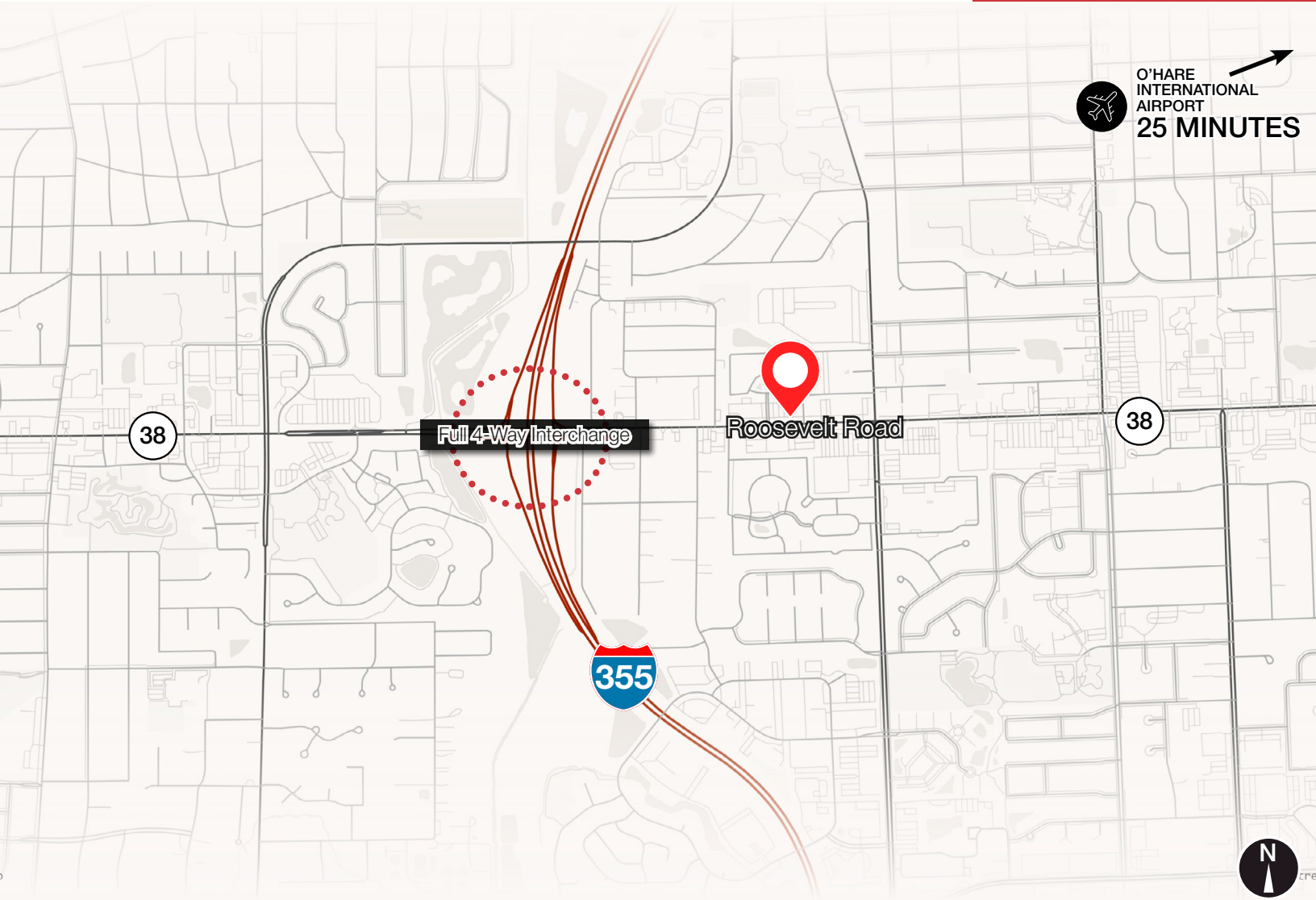
Suite 400 13,911 SF (Divisible to 5,540 SF)



THIRD FLOOR

Suite 300 9,999 SF





Contact

Jason Wurtz
+1 630 693 0692
jwurtz@hiffman.com

Bennett Baker
+1 630 317 0751
bbaker@hiffman.com

Sarah Walker
+1 630 389 8911
swalker@hiffman.com