



1549 RALPH AVENUE, BROOKLYN, NY 11236

**FOR
LEASE**

1,400 SF RETAIL SPACE + 1,000 BASEMENT



HIGHLY DESIRABLE LOCATION ON A BUSY AVENUE

PROPERTY INFORMATION

LOCATION	Along Ralph Ave & E 79th St
GROUND FLOOR	1,400 SF
BASEMENT	1,000 SF
HVAC	Yes
PARKING AREA	Yes

**▶ LEASE PRICE
(Upon Request)**

For complete offering information or inspection, please contact exclusive broker:

LEON LIPO
LLIPO@CTNYC.COM
646-942-4172

TRANSPORTATION

TRAINS



BUS

B47

ROADS

RALPH AVENUE

EAST 79TH STREET

FOSTER AVENUE

EXISTING TENANTS



97-77 QUEENS BLVD. SUITE 1120, REGO PARK, NY 11374 • 718-937-8100 • WWW.CTNYC.COM

All information is from sources deemed reliable and is submitted subject to errors, omission, changes of price or other conditions, prior to sale, rent, and withdrawal without notice.

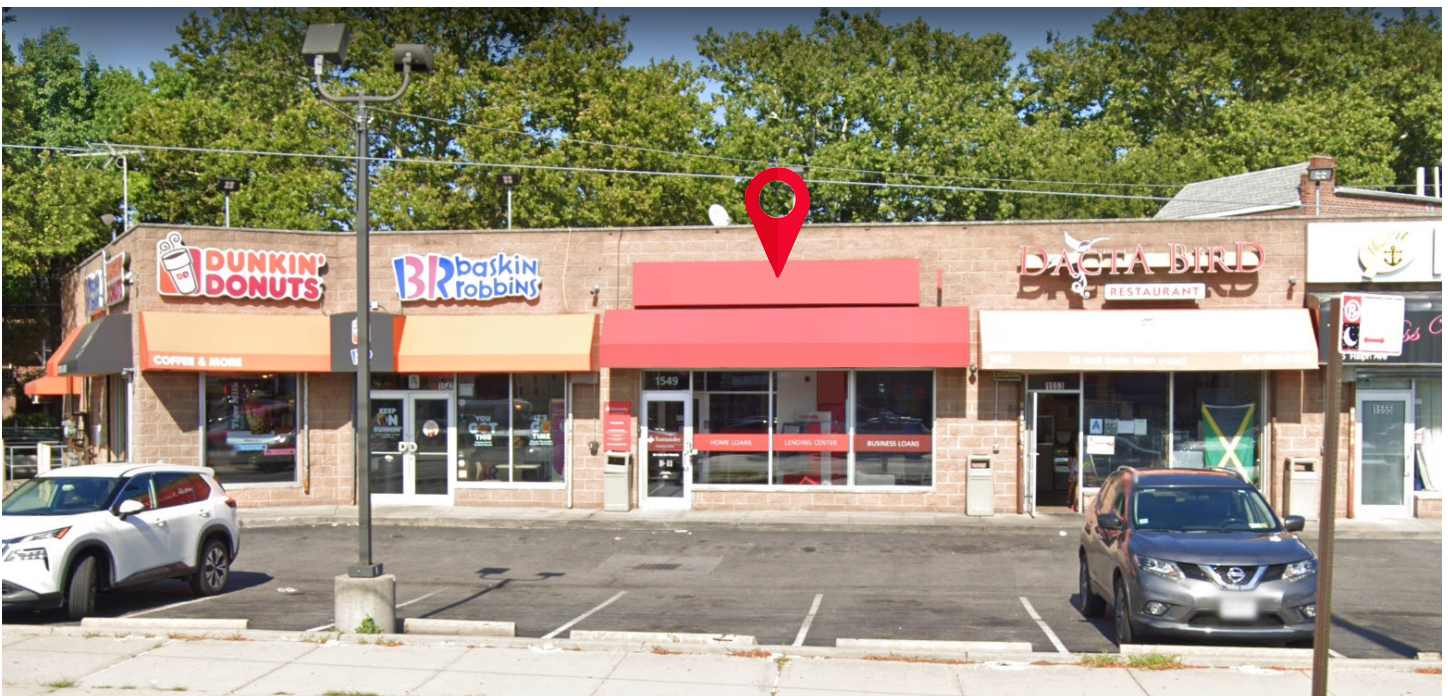


1549 RALPH AVENUE,
BROOKLYN, NY 11236

FOR
LEASE

1,400 SF RETAIL SPACE + 1,000 BASEMENT

PHOTOS



97-77 QUEENS BLVD. SUITE 1120, REGO PARK, NY 11374 • 718-937-8100 • WWW.CTNYC.COM

All information is from sources deemed reliable and is submitted subject to errors, omission, changes of price or other conditions, prior to sale, rent, and withdrawal without notice.



**1549 RALPH AVENUE,
BROOKLYN, NY 11236**

**FOR
LEASE**

1,400 SF RETAIL SPACE + 1,000 BASEMENT

GROUND FLOOR



97-77 QUEENS BLVD. SUITE 1120, REGO PARK, NY 11374 • 718-937-8100 • WWW.CTNYC.COM

All information is from sources deemed reliable and is submitted subject to errors, omission, changes of price or other conditions, prior to sale, rent, and withdrawal without notice.



1549 RALPH AVENUE,
BROOKLYN, NY 11236

FOR
LEASE

1,400 SF RETAIL SPACE + 1,000 BASEMENT

GROUND FLOOR & BASEMENT



97-77 QUEENS BLVD. SUITE 1120, REGO PARK, NY 11374 • 718-937-8100 • WWW.CTNYC.COM

All information is from sources deemed reliable and is submitted subject to errors, omission, changes of price or other conditions, prior to sale, rent, and withdrawal without notice.