

Compton

*For Rent*  
**70 White Lion Street  
Islington N1**



# Exceptional Islington offices with private terraces, natural light and flexible fitted space

**For Rent**

**Size**

3,380 - 15,648 Ft<sup>2</sup>

**Rent**

£62.50 - £67.50 per sq ft

**Fitout**

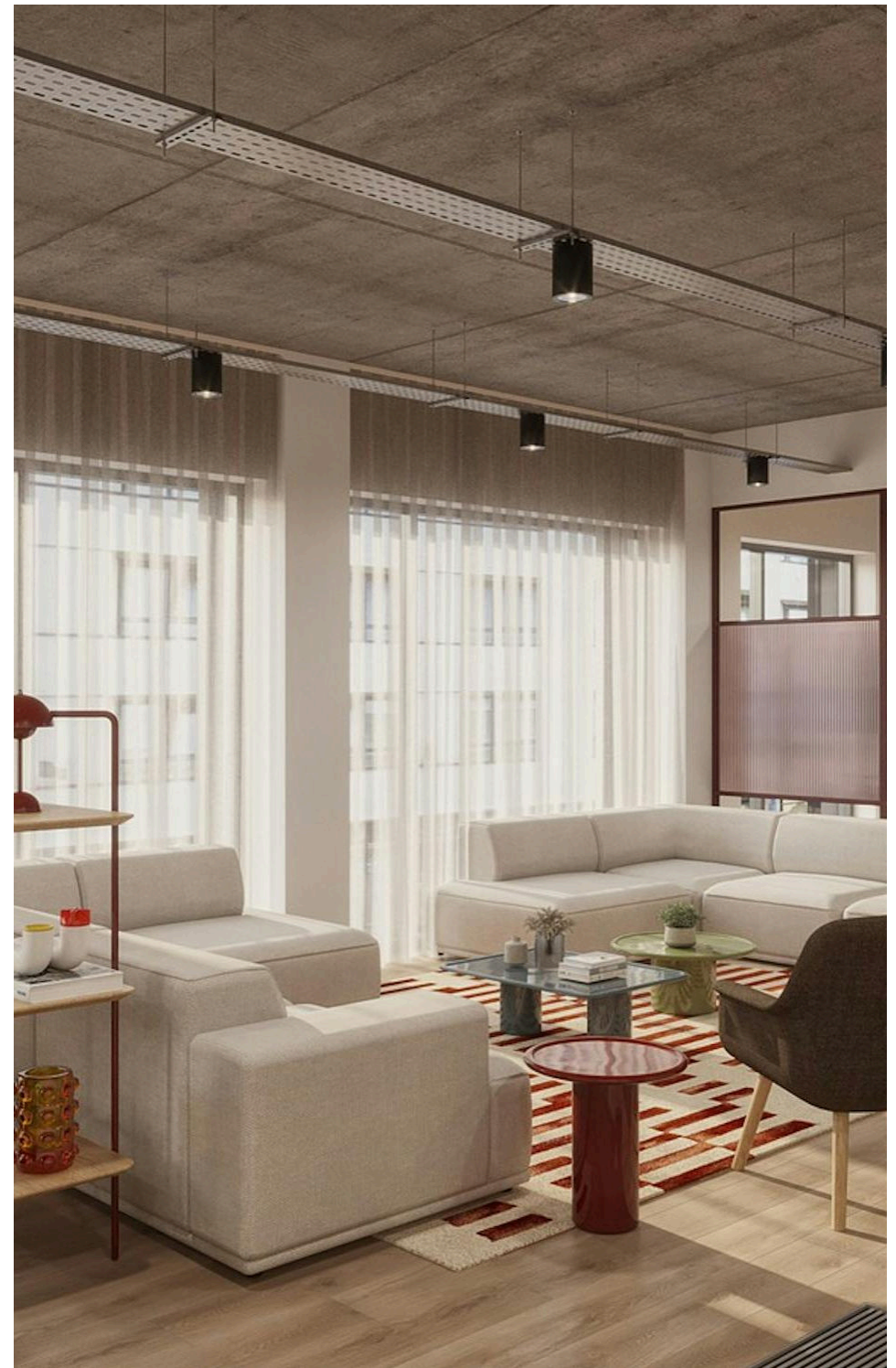
Fitted. 2nd floor offered fully fitted, 3rd & 4th floors can be offered fitted, subject to terms

**The Painter Building**

70 White Lion Street  
Islington N1

**Description**

The Painter Building offers inspiring office accommodation designed around how modern businesses work today. The available floors provide flexible solutions, from a fully fitted, plug-and-play option to spaces that can be tailored to a tenant's requirements. Abundant natural light, efficient layouts and the rare benefit of private outdoor terraces create a workspace that supports productivity, collaboration and wellbeing. It's an ideal home for creative, growing and forward-thinking occupiers looking for more than just an office.



For Rent

**The Painter Building**  
70 White Lion Street  
Islington N1

CGI

**Size**

3,380 - 15,648 Ft<sup>2</sup>

**Rent**

£62.50 - £67.50 per sq ft

**Fitout**

Fitted. 2nd floor offered fully fitted, 3rd & 4th floors can be offered fitted, subject to terms



Compton

For Rent

The Painter Building  
70 White Lion Street  
Islington N1

CGI



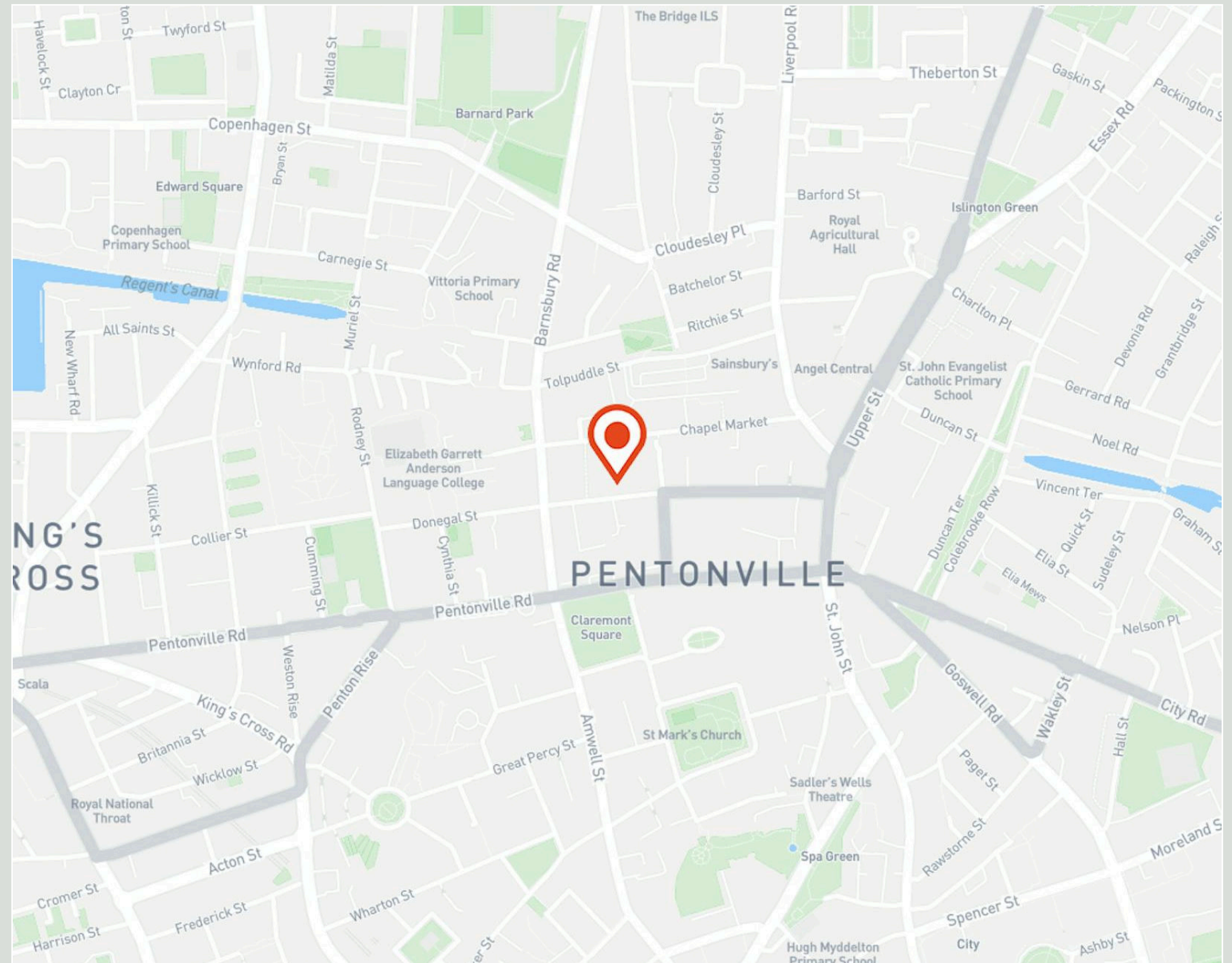
Compton

For Rent

**The Painter Building**  
70 White Lion Street  
Islington N1

Location

Set on White Lion Street in the heart of Islington, The Painter Building benefits from an energetic and well-established neighbourhood. Upper Street is moments away, offering an outstanding choice of places to eat, drink and shop, ideal for lunchtime breaks or after-work socials. Angel Underground station and numerous bus routes are close by, providing quick and easy connections across London.



*For Rent*

**The Painter Building**

70 White Lion Street

Islington N1

**Amenities**

- Private terraces to the 3rd and 4th floors
- 2nd floor offered fully fitted, 3rd & 4th floors can be offered fully fitted, subject to terms
- Excellent natural daylight across all floors
- Contemporary finishes with character features
- Secure cycle storage and shower facilities
- Surrounded by cafes, bars, shops and gyms

For Rent

**The Painter Building**  
70 White Lion Street  
Islington N1

*Availability*

<b>Name</b>	<b>Sq Ft</b>	<b>Rent (Sq Ft)</b>	<b>Total Month</b>	<b>Availability</b>
4th - Private Terraces	3,380	£65	£18,308.33	Coming Soon
3rd - Private Terrace	5,403	£62.50	£28,140.63	Coming Soon
2nd - Fully Fitted	6,865	£67.50	£38,615.63	Coming Soon
<b>Total</b>	<b>15,648</b>	<b>£65</b>	<b>£85,064.59</b>	

For *Rent*

**The Painter Building**  
70 White Lion Street  
Islington N1

**Tenure**

New Lease

**Compton Concierge**

Want your workspace *managed?*

Find out more

**[compton.london/concierge](https://compton.london/concierge)**

Contact Us

[compton.london](https://www.compton.london)

020 7101 2020

[enquiries@compton.london](mailto:enquiries@compton.london)

All appointments to view must be arranged via sole agents, Compton, through:



**Joshua Miller**

[jm@compton.london](mailto:jm@compton.london)

0207 101 2020 | 07917 725 365



**Elliott Stern**

[es@compton.london](mailto:es@compton.london)

0207 101 2020 | 07834 918700