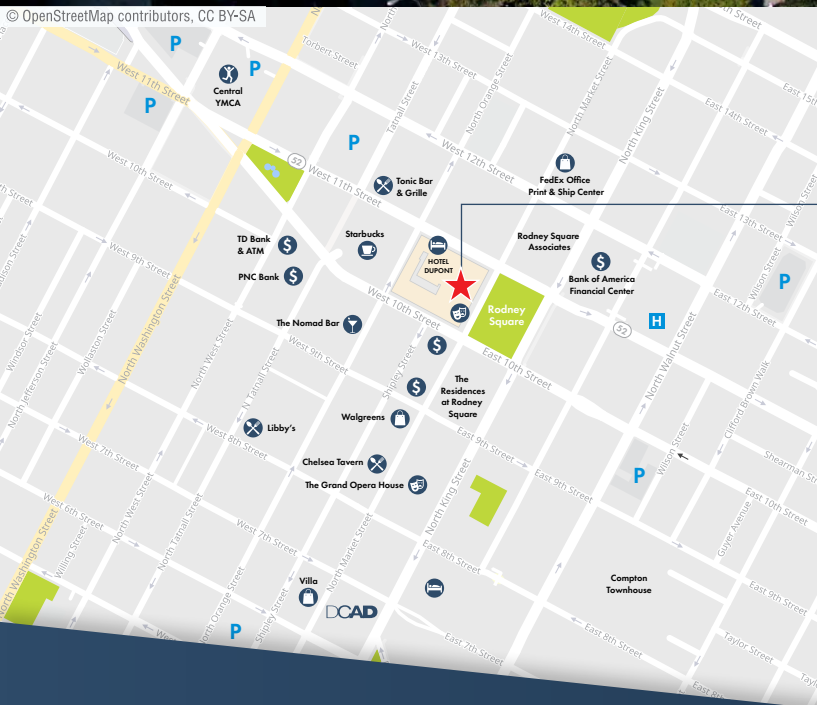


AVAILABLE

1007 N. MARKET STREET, WILMINGTON, DE 19898



© OpenStreetMap contributors, CC BY-SA



1007 N. MARKET STREET
WILMINGTON • DE

Location:

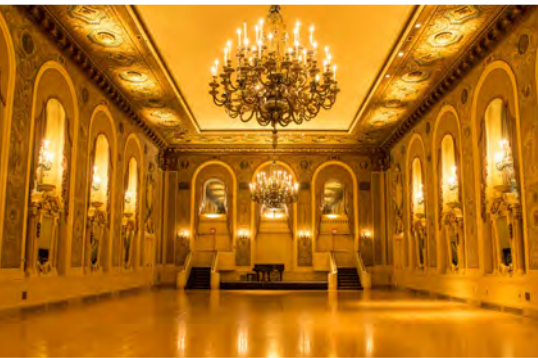
1007 N. Market Street
Wilmington, DE 19898



For more information please contact:
Kate Vaughan | 302.691.4066 | kvaughan@virtusREA.com

BUILDING AMENITIES

1007 N. Market Street

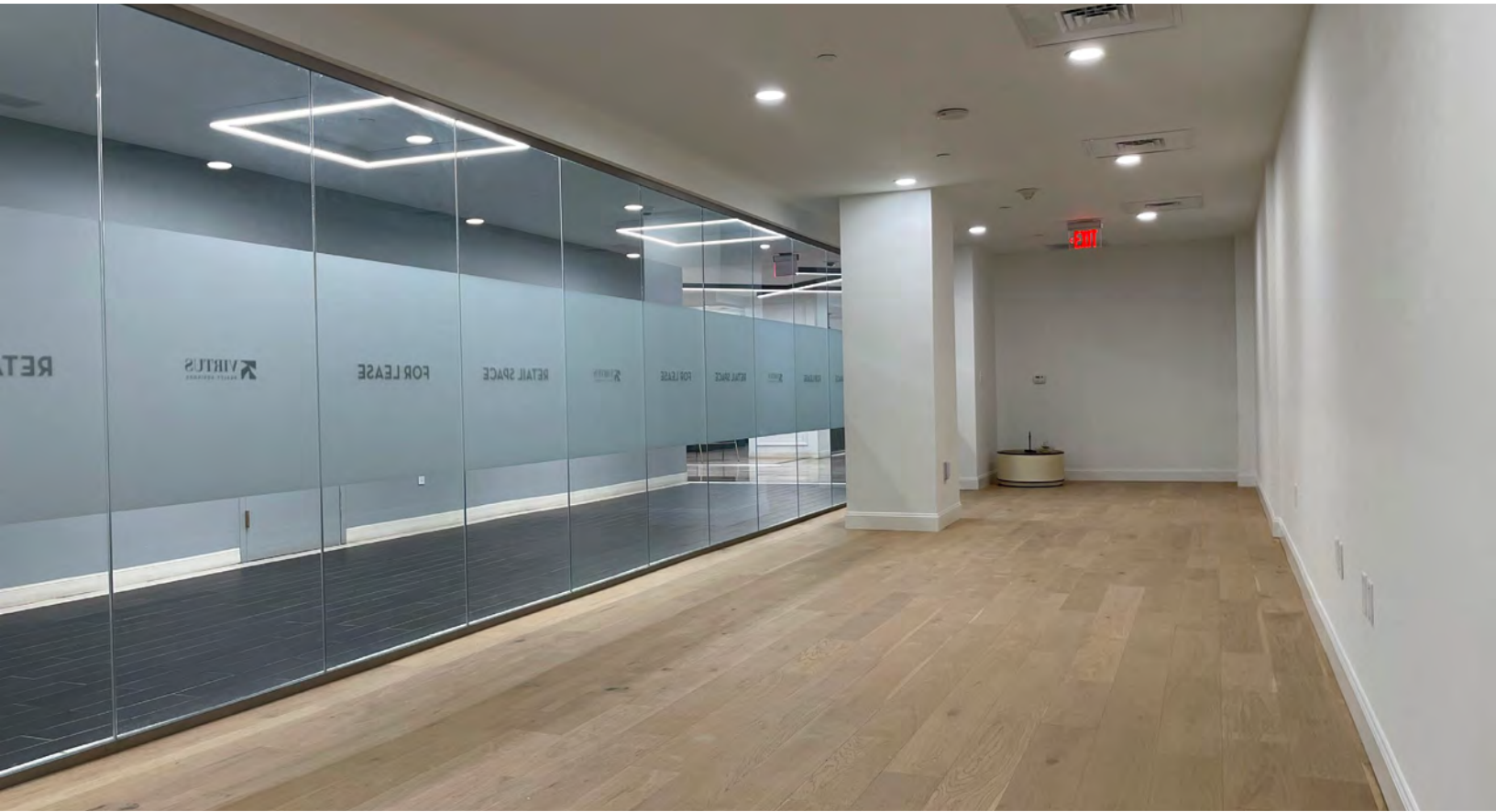


Property highlights

- Prestigious location facing Rodney Square
- Easy access to and from I-95
- 2 retail suites available on the ground floor
- 24 hour security
- **622 RSF** interior suite facing Currie Salon at 10th Street Entrance
- Tremendous access to downtown hotels, restaurants and retailers
- **1,397 RSF** with Rodney Square frontage and entrance & interior building entrance

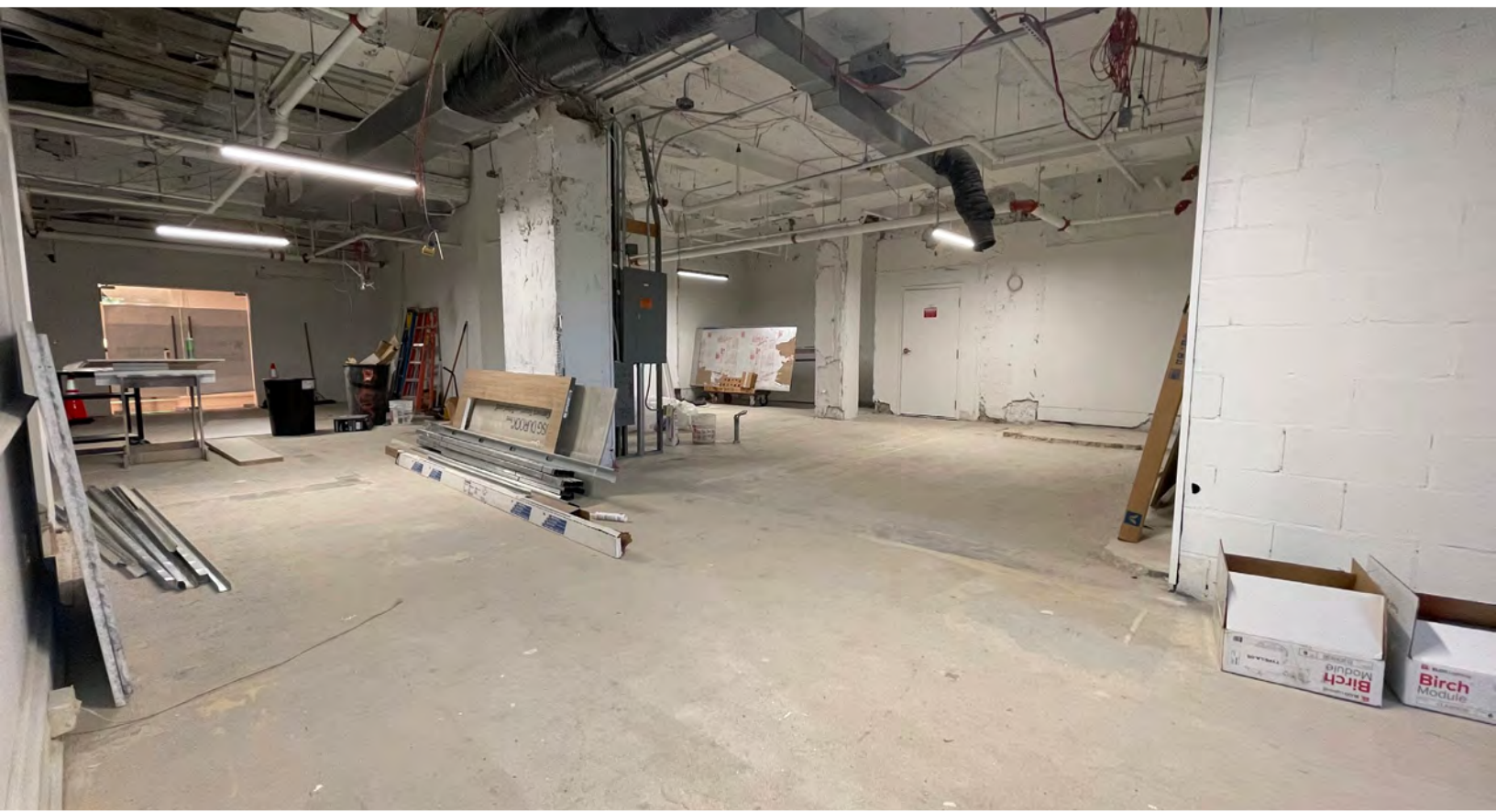
GROUND FLOOR – 622 RSF

1007 N. Market Street



GROUND FLOOR – 1,397 RSF

1007 N. Market Street



THE PREMISES

1007 N. Market Street

W 10th St

W 11th St

N Orange St

N Orange St

W 10th St

W 11th St

DE. CO



101 DUPONT PLACE



CURRIE SALON



M&T BANK



622 RSF AVAILABLE



1,397 RSF AVAILABLE



CHEMOURS



LE CAVALIER

THE PLAYHOUSE
RODNEY SQUARE



ELEVATORS



HOTEL DUPONT

N Market St

N Market St

W 10th St

W 11th St

RODNEY SQUARE

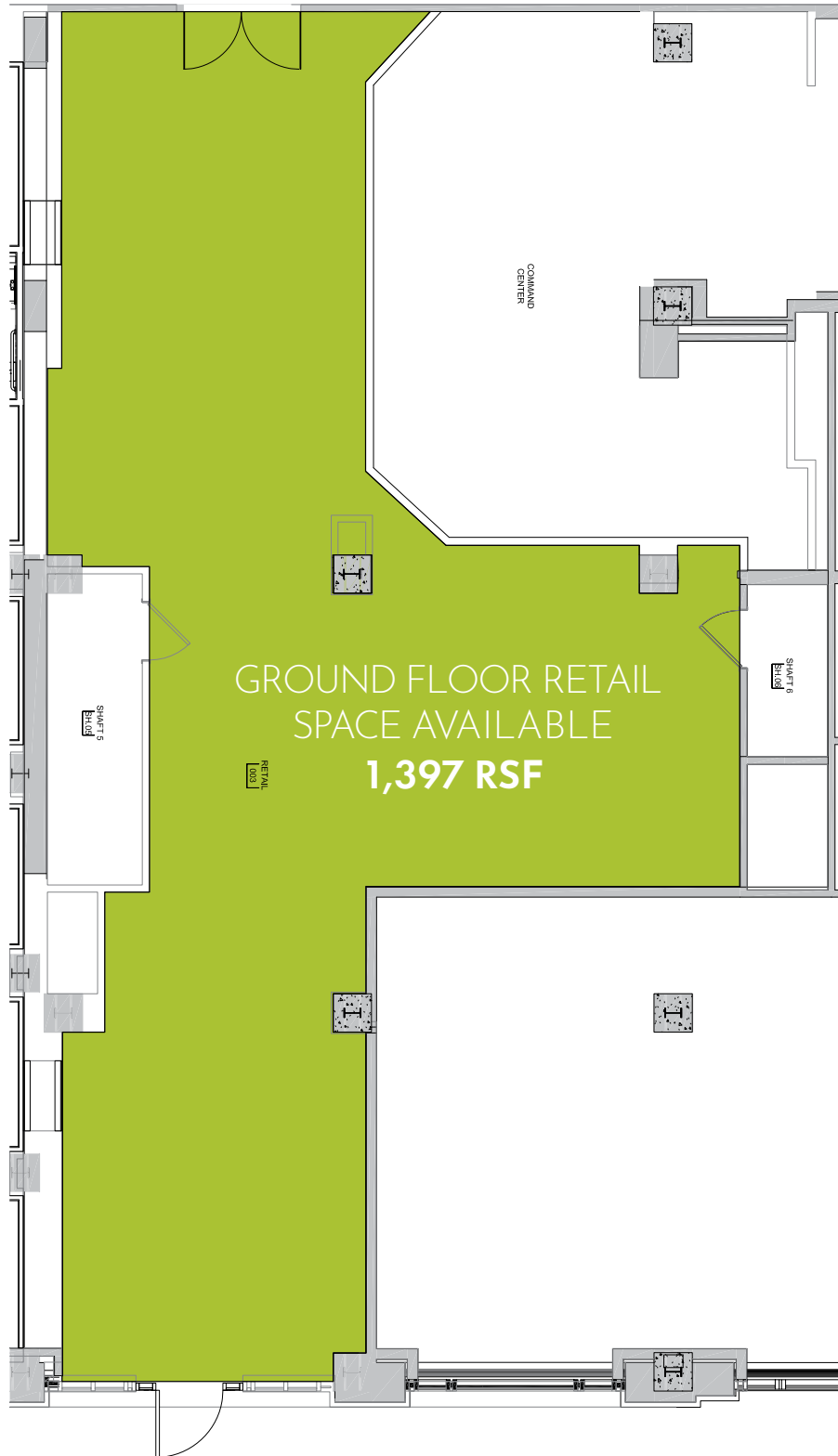
GROUND FLOOR PLAN – 622 RSF

1007 N. Market Street



GROUND FLOOR PLAN – 1,397 RSF

1007 N. Market Street





 **VIRTUS**
REALTY ADVISORS

For more information please contact:
Kate Vaughan | 302.691.4066 | kvaughan@virtusREA.com