

±2,000 SF INDUSTRIAL SUITE AVAILABLE FOR SUBLEASE  
KEARNY INDUSTRIAL PARK  
7720 CLAIREMONT MESA BOULEVARD, SAN DIEGO, CA 92111



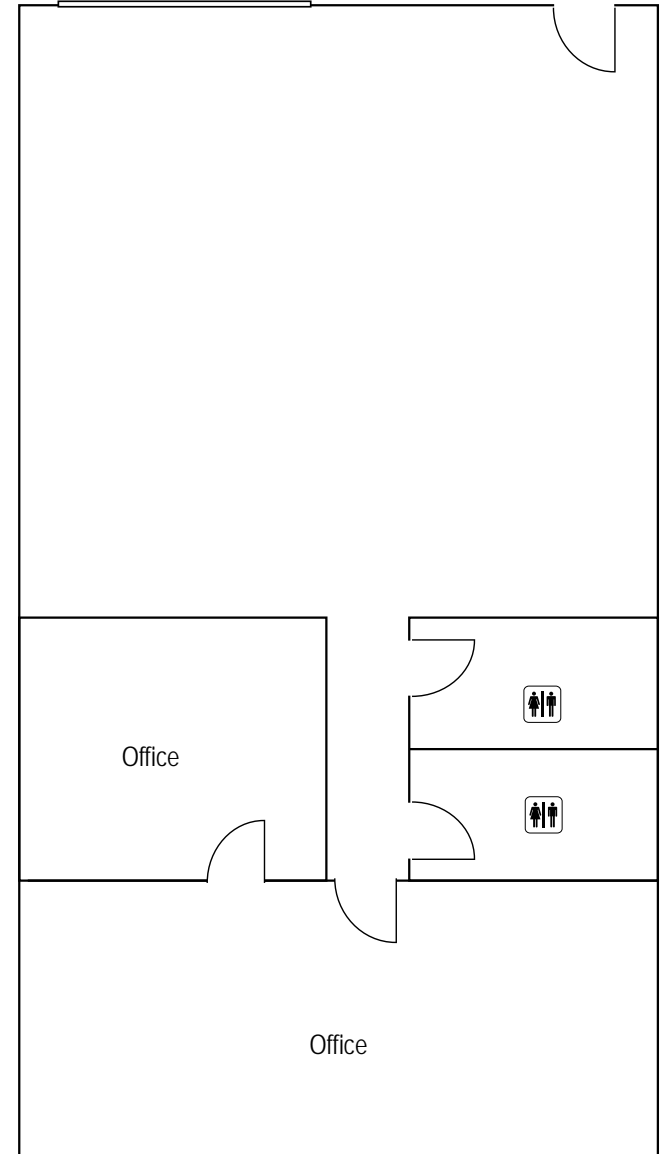
JOSH WEST, SIOR  
SENIOR VICE PRESIDENT/ PARTNER  
LICENSE #01923375  
858.458.3358 • JWEST@VOITCO.COM

**Voit**  
REAL ESTATE SERVICES



## FLOOR PLAN

Roll Up Door



**±2,000 SF**  
AVAILABLE SIZE

**\$2.35 GROSS PSF**  
SUBLEASE RATE

**12/31/2026**  
SUBLEASE EXPIRATION

## PROPERTY FEATURES

<b>STORIES</b>	One (1)
<b>DRIVE INS</b>	One (1) /10' w x 10' h
<b>BUILDING HT</b>	±18'
<b>YEAR BUILT</b>	1978
<b>PARKING RATIO</b>	±2.50/1,000 SF

**JOSH WEST, SIOR**  
SENIOR VICE PRESIDENT/ PARTNER  
LICENSE #01923375  
858.458.3358 · JWEST@VOITCO.COM

**Voit**  
REAL ESTATE SERVICES

4180 La Jolla Village Drive, Suite 100, La Jolla, CA 92037 · 858.453.0505 · Lic #01991785 · www.voidco.com

Licensed as a Real Estate Salesperson by the DRE. The information contained herein has been obtained from sources we deem reliable. While we have no reason to doubt its accuracy, we do not guarantee it. ©2025 Voit Real Estate Services, Inc. All Rights Reserved.