

EXECUTIVE SUITES AVAILABLE

EASY ACCESS FROM I-4



Starting At: \$700/mo per Office

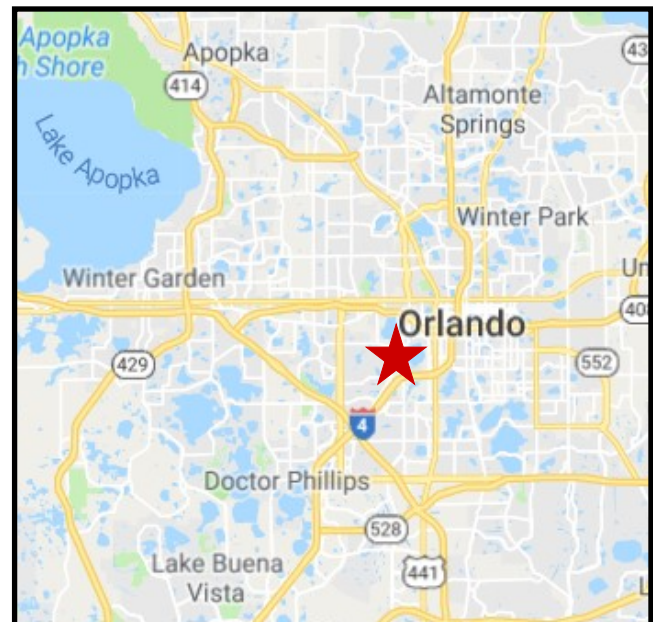
2250 LUCIEN WAY #305, MAITLAND, FL 32751

LOCATION OVERVIEW:

- Co-Working Space Available
Recent build out includes sleek finishes, controlled suite access, private windowed offices with frosted glass walls, and modern wall mural.
- Lucien Green Office Building
Professionally managed and maintained with on site representation and staff.
- Convenient Access to I-4 in Maitland
Maitland Center Office Park is an established business center with many national offices

BUILDING FEATURES

BUILDING SIZE	42,555 SQ FEET
YEAR BUILT	1984
ZONING	WS-RT
ON-SITE PARKING	146 SPACES / 3.43 Ratio
CLASS B OFFICE BUILDING	
PROPERTY MANAGER ON SITE	



For more information, please contact:

BILL MILLER

RE/MAX Central Realty
(407) 415-2263
bmiller@mycflre.com



300 Primera Blvd Suite 100
Lake Mary, FL 32746

EXECUTIVE SUITES AVAILABLE

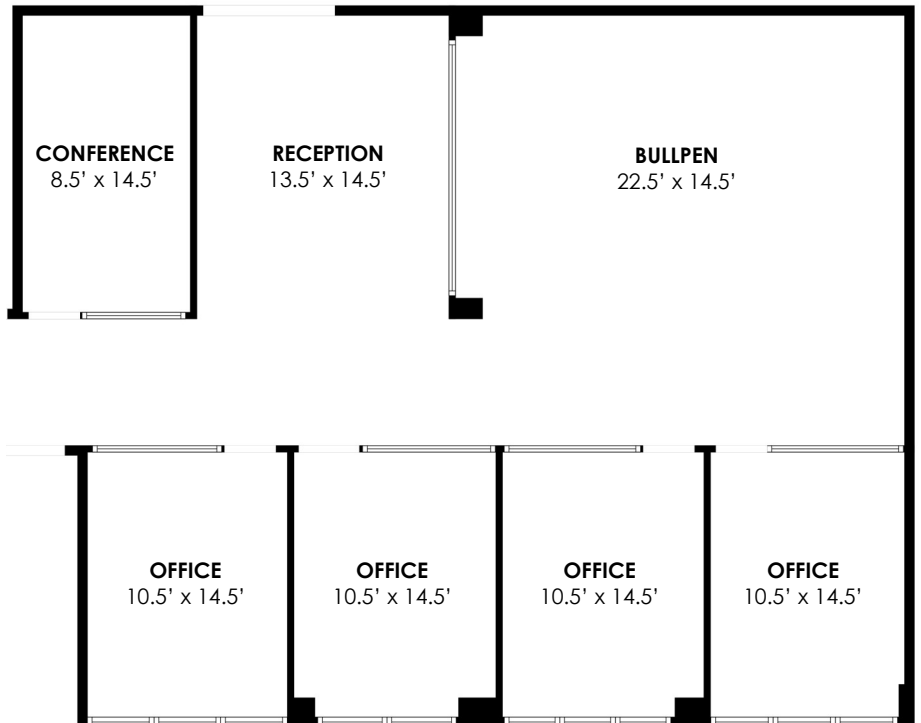
PHOTOS:



FLOOR PLAN:

Options Available:

- **4 Offices w/ Windows**
- **Open Bullpen w/ 8 workstations**
- **Shared Conference**
- **Shared Breakroom**
- **Common Lobby**
- **Common Restrooms**



For more information, please contact:

BILL MILLER

RE/MAX Central Realty
(407) 415-2263
bmiller@mycflre.com



300 Primera Blvd Suite 100
Lake Mary, FL 32746