

139 Reade St

(Between Greenwich & Hudson Streets)



As Exclusive Agents, we are pleased to present the following for Lease:

Retail Café

Fully Built

Prime Tribeca Location

 **Douglas Elliman**

Commercial

575 MADISON AVENUE, NEW YORK, NEW YORK 10022

139 Reade Street, Retail

One of kind opportunity to lease retail space supporting A+ quality residential condominium in the heart of Tribeca.

Location Between Greenwich St & Hudson St

Space Ground Level - Approx 400 SF
Basement Storage - Approx 100 SF

Frontage 14'

Ceiling Height 12'

Rental \$9,000

Possession Arranged

Features

- Private Restroom
- Water / Sewer / Heat included with rent
- Direct Metered Electric
- AC Window Unit
- Nearby proximity to 1, 2, 3 (Chambers St Station)

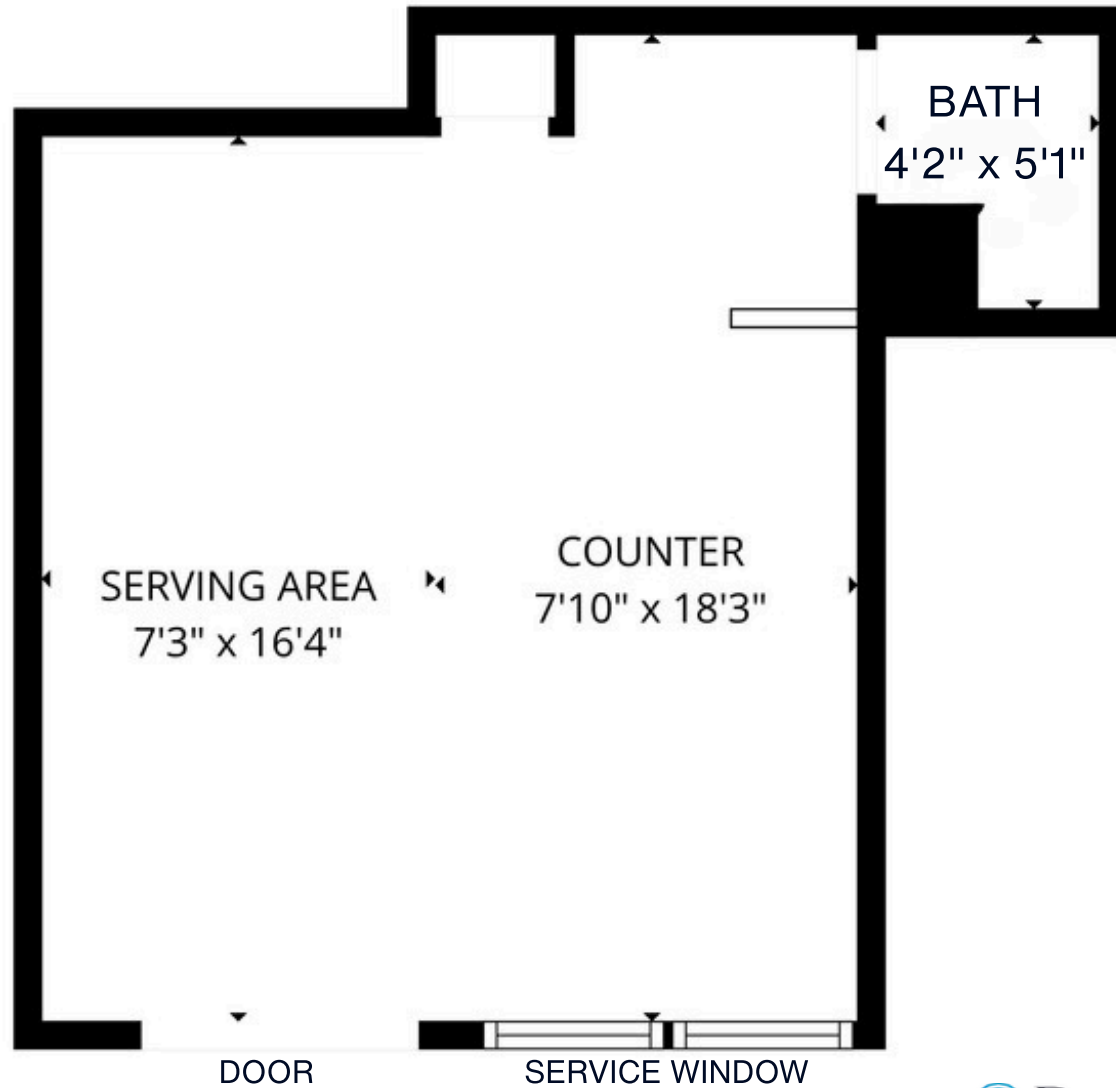
Potential Use

- Coffee / Tea
- Non-vented cooking
- Jewelry / Accessories
- Clothing
- Concierge Services
- Showroom



139 Reade Street, Retail

FLOOR PLANS



 **DouglasElliman**
Commercial

575 MADISON AVENUE, NEW YORK, NEW YORK 10022

Renderings and floor plans are intended only as a general reference. Features, materials, finishes, layout and actual measurements may be different than indicated.

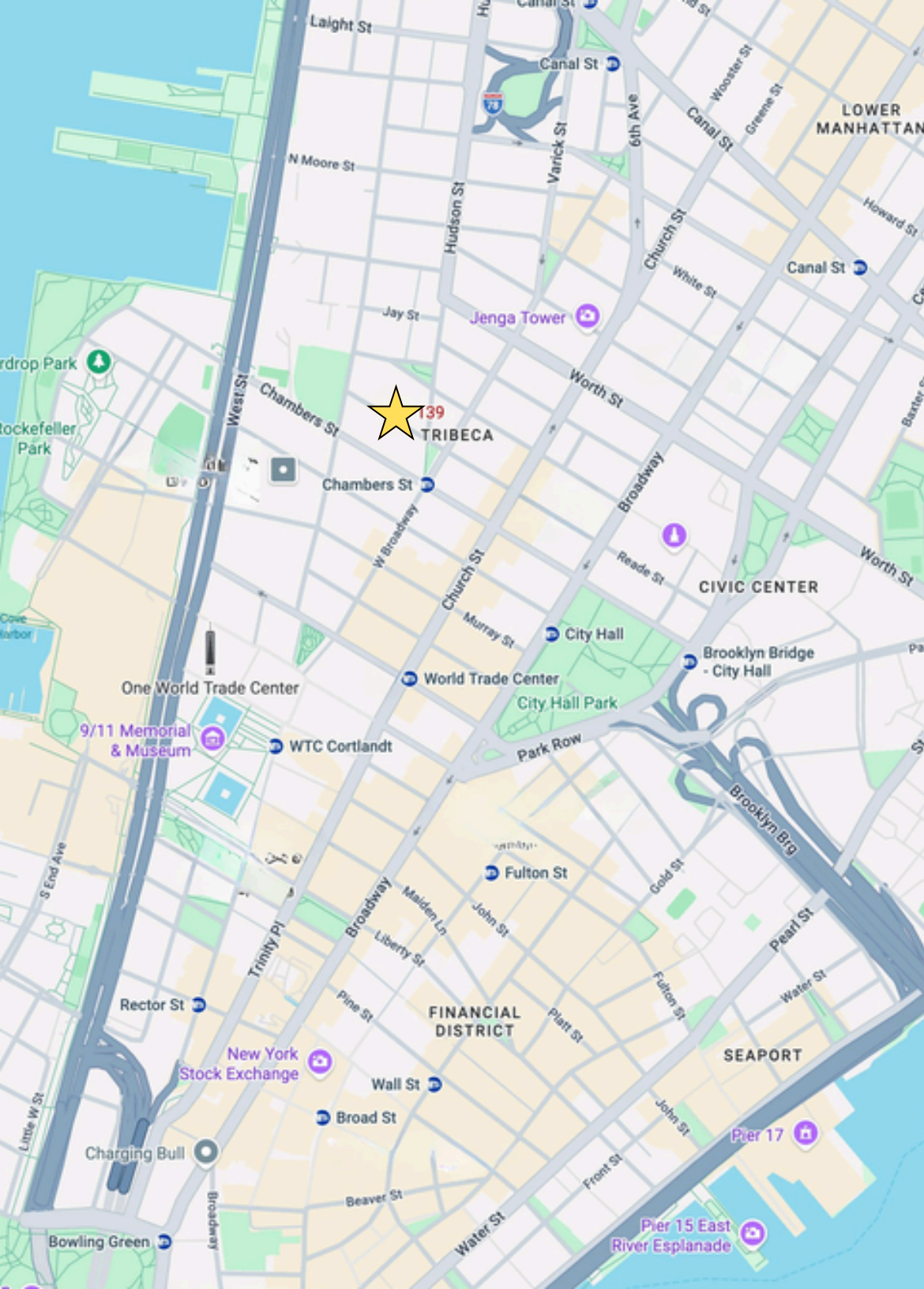
139 Reade Street, Retail

ADDITIONAL PHOTOS



 **Douglas Elliman**
Commercial

575 MADISON AVENUE, NEW YORK, NEW YORK 10022 2



For further information and inspection, please contact:

Louis Puopolo

Division Head NYC - DE Commercial

Licensed Associate Real Estate Broker

917-374-0099

louis.puopolo@elliman.com

 **Douglas Elliman**
Commercial

575 MADISON AVENUE, NEW YORK, NEW YORK 10022

©2025 DOUGLAS ELLIMAN COMMERCIAL, LLC. ALL RIGHTS RESERVED. THE INFORMATION CONTAINED IN THIS DOCUMENT IS PROPRIETARY TO DOUGLAS ELLIMAN COMMERCIAL, LLC AND SHALL BE USED SOLELY FOR THE PURPOSES OF EVALUATING THIS PROPOSAL. ALL SUCH DOCUMENTATION AND INFORMATION REMAINS THE PROPERTY OF DOUGLAS ELLIMAN COMMERCIAL, LLC AND SHALL BE KEPT CONFIDENTIAL. REPRODUCTION OF ANY PART OF THIS DOCUMENT IS AUTHORIZED ONLY TO THE EXTENT NECESSARY FOR ITS EVALUATION. IT IS NOT TO BE SHOWN TO ANY THIRD PARTY WITHOUT THE PRIOR WRITTEN AUTHORIZATION OF DOUGLAS ELLIMAN COMMERCIAL, LLC. ALL INFORMATION CONTAINED HEREIN IS FROM SOURCES DEEMED RELIABLE; HOWEVER, NO REPRESENTATION OR WARRANTY IS MADE AS TO THE ACCURACY THEREOF.