

# Transportation Terminal

Available Immediately

[Milton] - Halton Hills

Halton, Ontario

Industrial Business  
Development  
Group

contact:

**Tony Vaccarello**  
Sales Representative  
Analyst

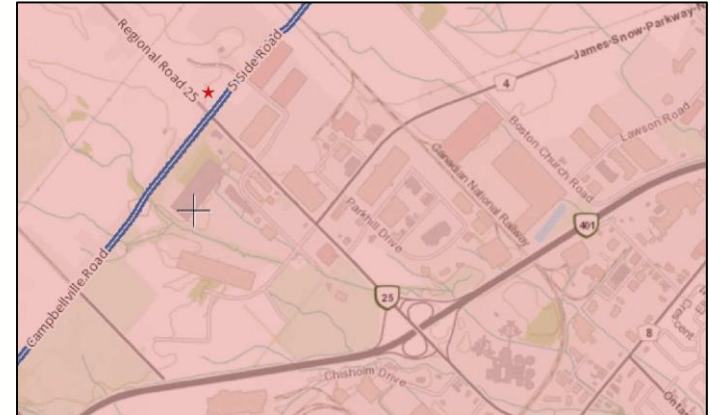
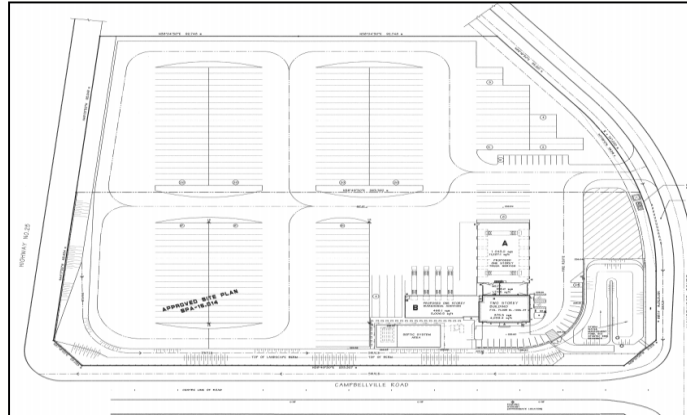
Cell Ph No: 416-823-2929  
tvaccarello@trebnet.com

**Commercial Focus  
Realty Inc., Brokerage**  
35 The Links Road,  
Suite 202, Toronto, ON  
M2P 1T7  
T: 416-972-9220

[www.cfrealty.ca](http://www.cfrealty.ca)  
[tvaccarello@trebnet.com](mailto:tvaccarello@trebnet.com)  
[tvaccarello@cfrealty.ca](mailto:tvaccarello@cfrealty.ca)  
[tvrealty@gmail.com](mailto:tvrealty@gmail.com)

12.21 ACRE Transportation Terminal Facility @ Hwy 25 (Bronte Rd) & Hwy 401 - Exit 320  
Corner Exposure of Highway 25 & Campbellville S. R. (5<sup>th</sup> Line) - Three road Frontages

- **12.21 Acre Truck, Trailer Parking, Office & Proposed Expansion**
- **8,000 Square Foot Office Building - Completion May with occupancy June 2019**
- **Proposed Cross-Dock and Warehouse Facilities to be constructed and**
- **12,000 Square Foot Repair Facility - 5 Bays all Drive Through & pit bay**



- **Highway 25 & Highway 401 (Milton, Ontario) and Campbellville Side Road**
- **Truck Parking available by contract only - Offices currently under construction**
- **Fenced and gated card access - video surveillance / 24 Hr Security - electronic entry**
- **C-TPAT compliant - Truck Engine Outlets Available - outside storage available**

**Call (416) 823-2929 : Tony Vaccarello for all details and availability  
all terms & conditions to be negotiated**

**COMMERCIAL FOCUS REALTY inc.**  
Brokerage

Copyright Commercial Focus Realty Inc., Brokerage. The information contained herein (the "information") is intended for informational purposes only and should not be relied upon by recipients hereof. Although the information is believed to be correct, its accuracy, correctness or completeness cannot be guaranteed and has not been verified by either Commercial Focus Realty Inc., Brokerage (CFR) or any of its affiliates (CFR and its affiliates are collectively referred to herein as "CFR"). CFR neither guarantees, warrants nor assumes any responsibility or liability of any kind with respect to the accuracy, correctness, completeness, or suitability of, or decisions based upon or in connection with, the information. The recipient of the information should take such steps as the recipient may deem appropriate with respect to using the information. The information may change and property described herein may be withdrawn from the market at any time without notice or obligation of any kind on the part of CFR. The information is protected by copyright and shall be fully enforced.

# Transportation Terminal

for Lease – Custom Design build  
Opportunity

[Milton] - Halton Hills

Halton, Ontario

Industrial Business  
Development  
Group

12.21 ACRE Transportation Terminal Facility @ Hwy 25 (Bronte Rd) & Hwy 401 - Exit 320  
Corner Exposure of Highway 25 & Campbellville S. R. (5<sup>th</sup> Line) - Three road Frontages

**Truck & Trailer Parking – Office Space Completion May 2019**  
**Repair Facility & Cross Docking/Warehouse Proposed**  
**EXISTING PARKING AVAILABLE ONLY THROUGH CONTRACT**

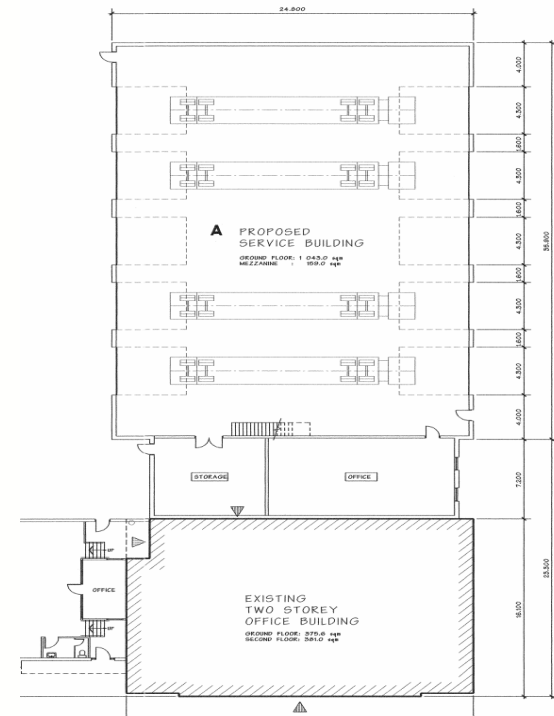
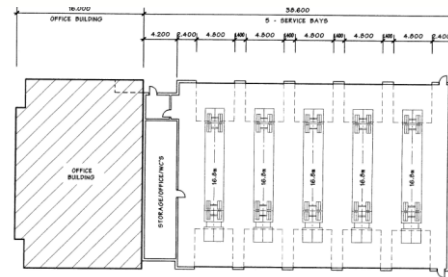
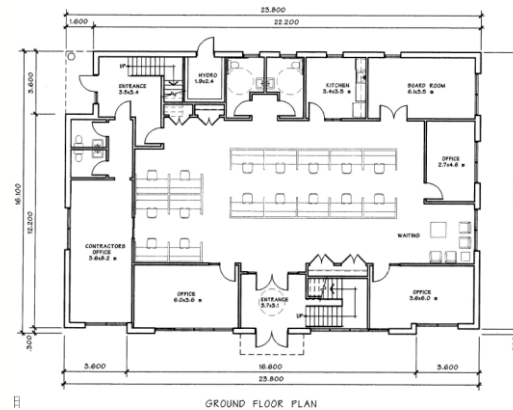
contact:

**Tony Vaccarello**  
Sales Representative  
Analyst

Cell Ph No: 416-823-2929  
tvaccarello@trebnet.com

**Commercial Focus  
Realty Inc., Brokerage**  
35 The Links Road,  
Suite 202, Toronto, ON  
M2P 1T7  
T: 416-972-9220

[www.cfrealty.ca](http://www.cfrealty.ca)  
[tvaccarello@trebnet.com](mailto:tvaccarello@trebnet.com)  
[tvaccarello@cfrealty.ca](mailto:tvaccarello@cfrealty.ca)  
[tvrealty@gmail.com](mailto:tvrealty@gmail.com)



**COMMERCIAL FOCUS REALTY inc.**  
Brokerage

Copy right Commercial Focus Realty Inc., Brokerage. The information contained herein (the "information") is intended for informational purposes only and should not be relied upon by recipients hereof. Although the information is believed to be correct, its accuracy, correctness or completeness cannot be guaranteed and has not been verified by either Commercial Focus Realty Inc., Brokerage (CFR) or any of its affiliates (CFR and its affiliates are collectively referred to herein as "CFR"). CFR neither guarantees, warrants nor assumes any responsibility or liability of any kind with respect to the accuracy, correctness, completeness, or suitability of, or decisions based upon or in connection with, the information. The recipient of the information should take such steps as the recipient may deem appropriate with respect to using the information. The information may change and property described herein may be withdrawn from the market at any time without notice or obligation of any kind on the part of CFR. The information is protected by copyright and shall be fully enforced.

# Transportation Terminal

Available Immediately

[Milton] - Halton Hills

Halton, Ontario

Industrial Business  
Development  
Group

12.21 ACRE Transportation Terminal Facility @ Hwy 25 (Bronte Rd) & Hwy 401 - Exit 320  
Corner Exposure of Highway 25 & Campbellville S. R. (5<sup>th</sup> Line) - Three road Frontages

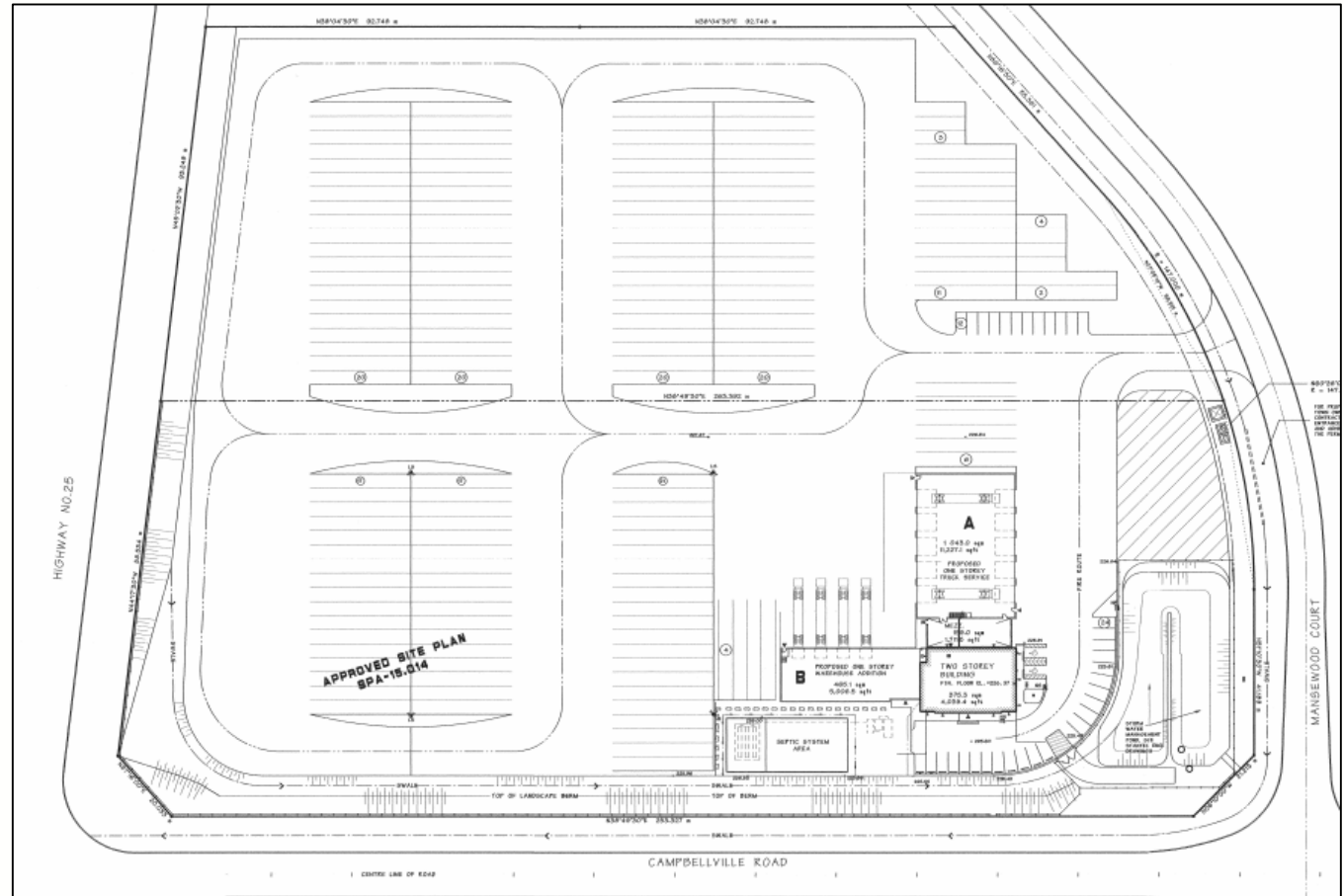
contact:

**Tony Vaccarello**  
Sales Representative  
Analyst

Cell Ph No: 416-823-2929  
tvaccarello@trebnet.com

**Commercial Focus  
Realty Inc., Brokerage**  
35 The Links Road,  
Suite 202, Toronto, ON  
M2P 1T7  
T: 416-972-9220

[www.cfarealty.ca](http://www.cfarealty.ca)  
[tvaccarello@trebnet.com](mailto:tvaccarello@trebnet.com)  
[tvaccarello@cfarealty.ca](mailto:tvaccarello@cfarealty.ca)  
[tvarealty@gmail.com](mailto:tvarealty@gmail.com)



**COMMERCIAL FOCUS REALTY inc.**  
Brokerage

Copyright Commercial Focus Realty Inc., Brokerage. The information contained herein (the "information") is intended for informational purposes only and should not be relied upon by recipients hereof. Although the information is believed to be correct, its accuracy, correctness or completeness cannot be guaranteed and has not been verified by either Commercial Focus Realty Inc., Brokerage (CFR) or any of its affiliates (CFR and its affiliates are collectively referred to herein as "CFR"). CFR neither guarantees, warrants nor assumes any responsibility or liability of any kind with respect to the accuracy, correctness, completeness, or suitability of, or decisions based upon or in connection with, the information. The recipient of the information should take such steps as the recipient may deem appropriate with respect to using the information. The information may change and property described herein may be withdrawn from the market at any time without notice or obligation of any kind on the part of CFR. The information is protected by copyright and shall be fully enforced.