

CITY CENTRE PLAZA FOR LEASE

RESTAURANT/RETAIL OPPORTUNITIES ALONG HIGHWAY 111
71680 Highway 111, Rancho Mirage, CA 92270



OFFERING SUMMARY

LEASE RATES: \$2.25-\$2.75 PSF+NNN

AVAILABLE SPACES: 1,365-4,517 SF

Curtis Barlow
(760) 899-7700
CalDRE #01380247

©2023 Coldwell Banker. All Rights Reserved. Coldwell Banker Commercial® and the Coldwell Banker Commercial logos are trademarks of Coldwell Banker Real Estate LLC. The Coldwell Banker® System is comprised of company owned offices which are owned by a subsidiary of Anywhere Advisors LLC and franchised offices which are independently owned and operated. The Coldwell Banker System fully supports the principles of the Equal Opportunity Act.



**COLDWELL BANKER
COMMERCIAL**
LYLE & ASSOCIATES,
LP

ABOUT THE PROPERTY

CITY CENTRE PLAZA

71680 Highway 111 Rancho Mirage, CA 92270



PROPERTY DESCRIPTION

The City Centre Plaza is a small strip center located on Highway 111 adjacent to the Hilton Garden Inn and the Holiday Inn Express. Pinot's Palette, and Shabu Shabu Zen Japanese Hot Pot are co-tenants in the strip center. Highway 111 monument sign identification is available. M-U; Mixed-Use Zoning.

Space A is a 4,517 SF, beautifully furnished restaurant/retail space, once the renowned Hibachi Japanese Steakhouse, furnished with 24 Teppan Tables and a full sushi bar. It is located on the west end of the strip center. \$2.75/PSF + NNN. APN 684-240-024.

Space G is a 1,365 SF space, a former a nail salon, is located on the east end of the strip center, adjacent to the Hilton Garden Inn. \$2.25 PSF + NNN. APN 684-240-023.



Curtis Barlow
(760) 899-7700
CalDRE #01380247



**COLDWELL BANKER
COMMERCIAL**
LYLE & ASSOCIATES,
LP

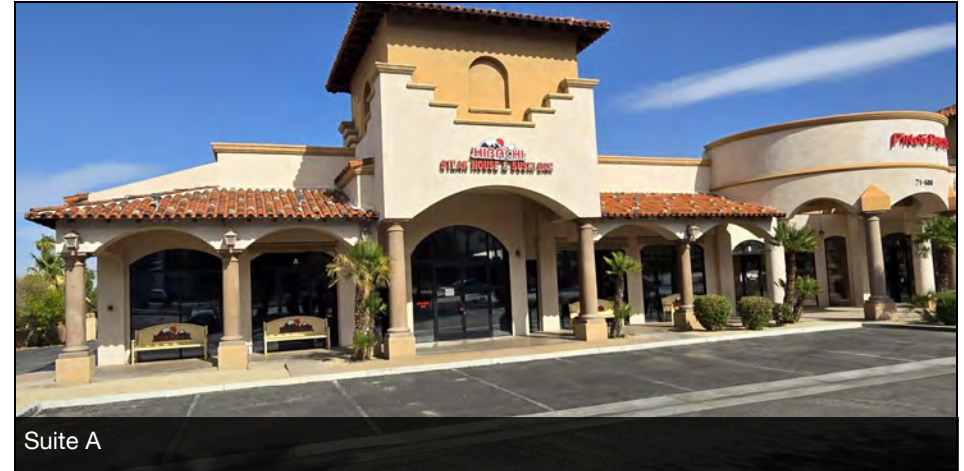
EXTERIOR PHOTOS

CITY CENTRE PLAZA

71680 Highway 111 Rancho Mirage, CA 92270



Suite G



Suite A



Suite G



Monument Sign

Curtis Barlow
(760) 899-7700
CalDRE #01380247



**COLDWELL BANKER
COMMERCIAL**
LYLE & ASSOCIATES,
LP

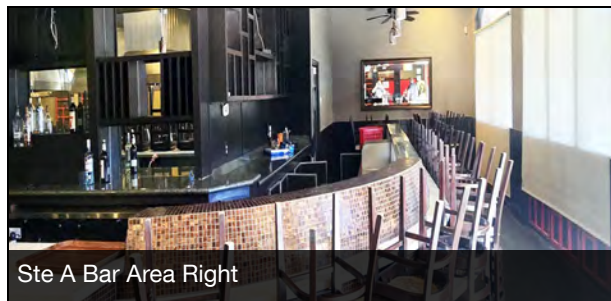
INTERIOR PHOTOS

CITY CENTRE PLAZA

71680 Highway 111 Rancho Mirage, CA 92270



Ste A Bar Area Left



Ste A Bar Area Right



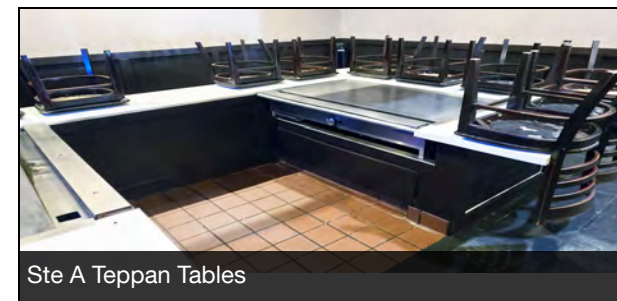
Ste A Dining Area



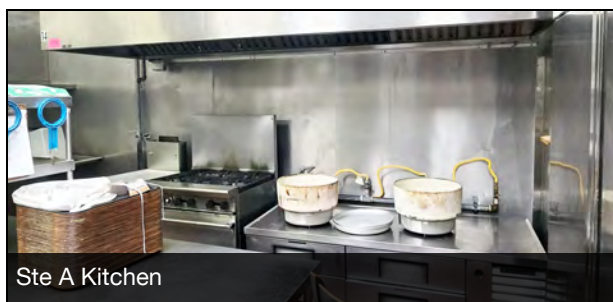
Ste A Dining Area



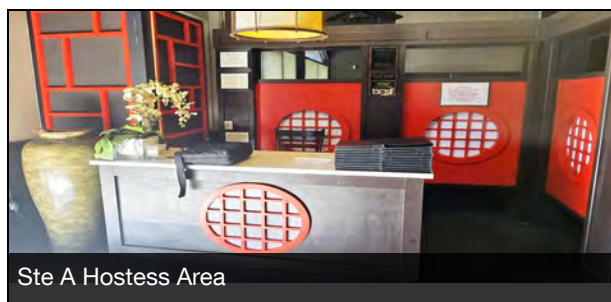
Ste A Bar Area



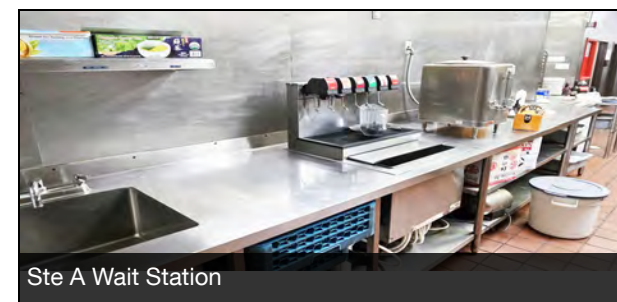
Ste A Teppan Tables



Ste A Kitchen



Ste A Hostess Area



Ste A Wait Station

Curtis Barlow
(760) 899-7700
CalDRE #01380247

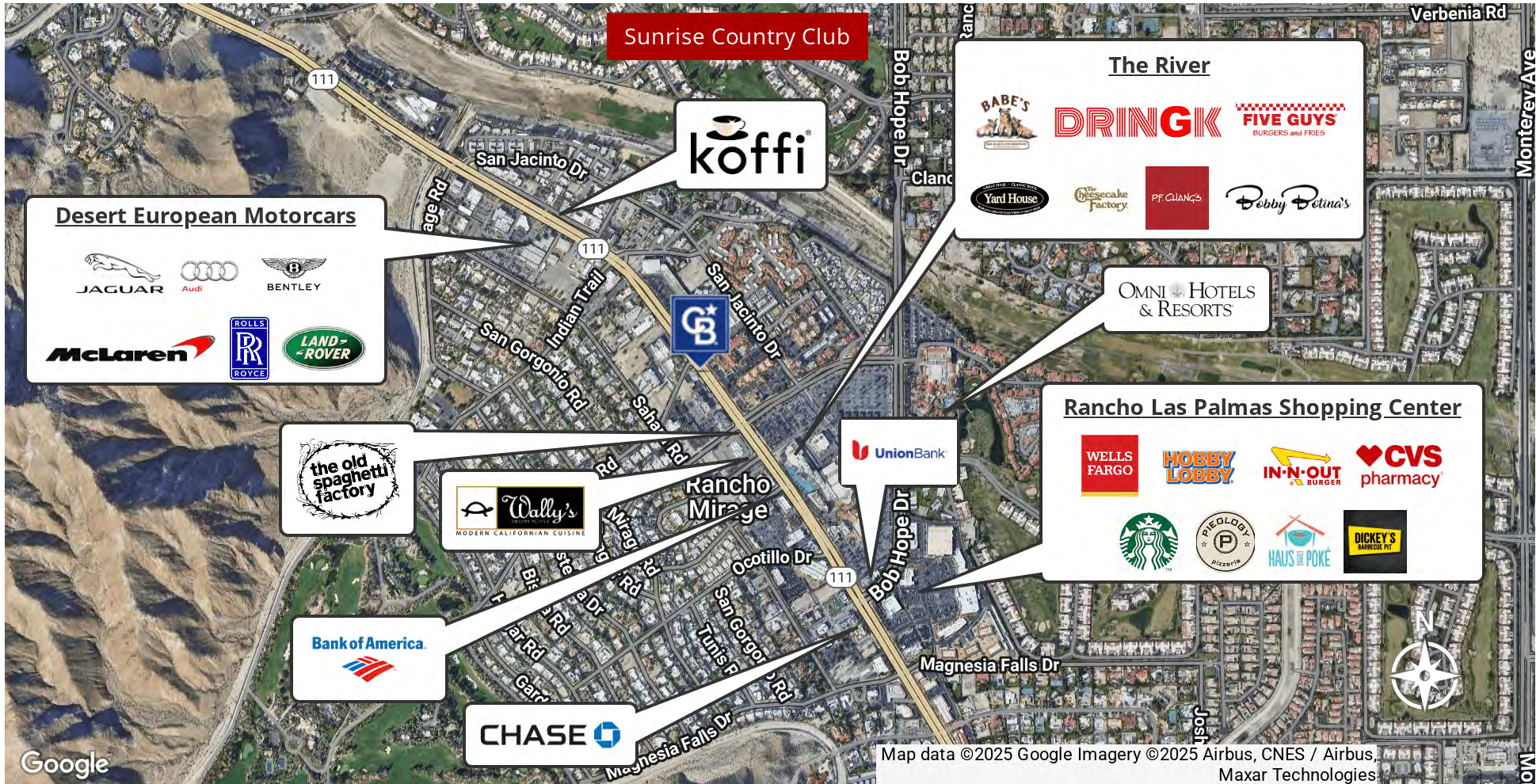


**COLDWELL BANKER
COMMERCIAL**
LYLE & ASSOCIATES,
LP

RETAILER MAP

CITY CENTRE PLAZA

71680 Highway 111 Rancho Mirage, CA 92270



Curtis Barlow
 (760) 899-7700
 CalDRE #01380247



**COLDWELL BANKER
 COMMERCIAL**
 LYLE & ASSOCIATES,
 LP

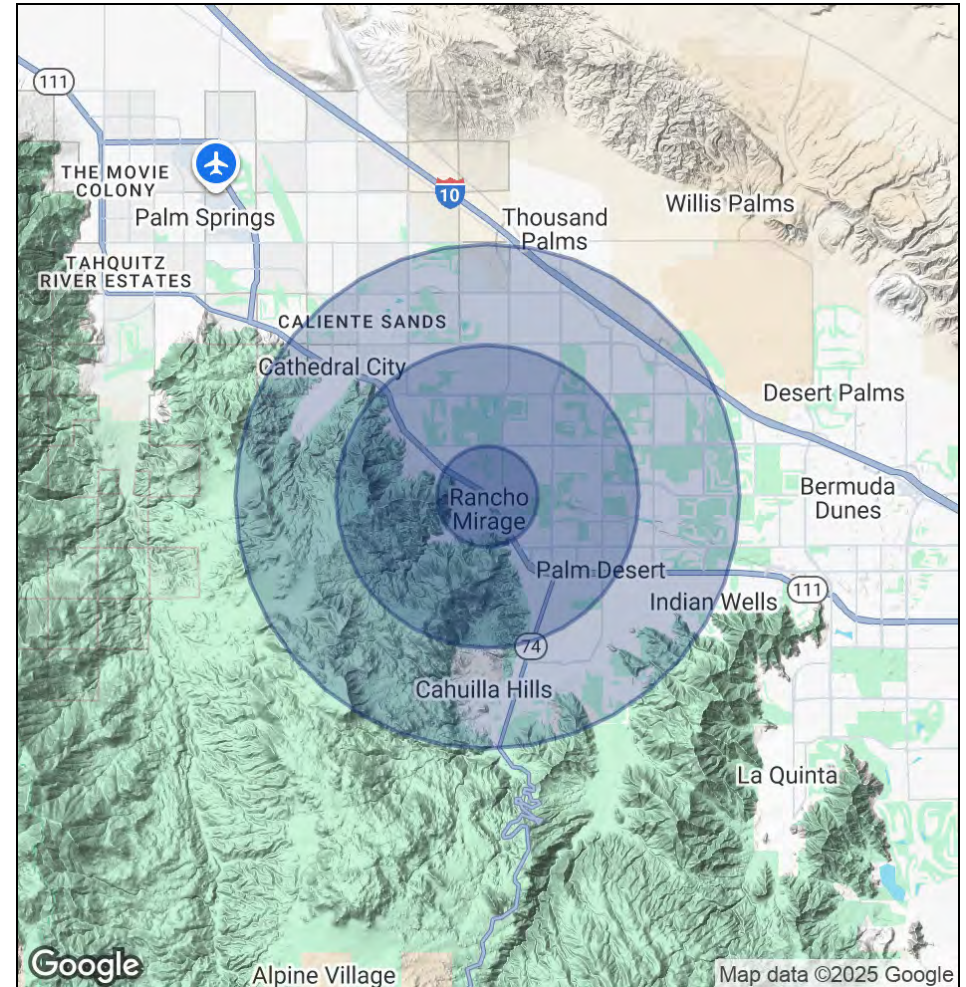
DEMOGRAPHICS

CITY CENTRE PLAZA

71680 Highway 111 Rancho Mirage, CA 92270

POPULATION	1 MILE	3 MILES	5 MILES
Total Population	2,975	35,430	86,379
Average Age	63	55	53
Average Age (Male)	62	54	52
Average Age (Female)	64	57	54
HOUSEHOLDS & INCOME	1 MILE	3 MILES	5 MILES
Total Households	1,667	17,647	40,439
# of Persons per HH	1.8	2	2.1
Average HH Income	\$143,158	\$111,671	\$109,866
Average House Value	\$924,608	\$694,238	\$691,428

* Demographic data derived from 2020 ACS - US Census



Curtis Barlow
 (760) 899-7700
 CalDRE #01380247



CONTACT US

CITY CENTRE PLAZA

71680 Highway 111 Rancho Mirage, CA 92270



CURTIS BARLOW

Executive Vice President

Direct: (760) 899-7700 **Cell:** (760) 899-7700
cbarlow@cbclyle.net

CalDRE #01380247

Curtis Barlow
(760) 899-7700
CalDRE #01380247



COLDWELL BANKER
COMMERCIAL
LYLE & ASSOCIATES,
LP