

ARCHITECT:

GranKriegel

GRAN KRIEGEL ASSOCIATES
ARCHITECTS AND PLANNERS
219 36TH STREET, BOX 25
CAMP DAVID
BROOKLYN, NY 11232
212.206.1560

MEP CONSULTANT:
DVL CONSULTING ENGINEERS, INC
75 MAIN STREET
HACKENSACK, NJ 07801

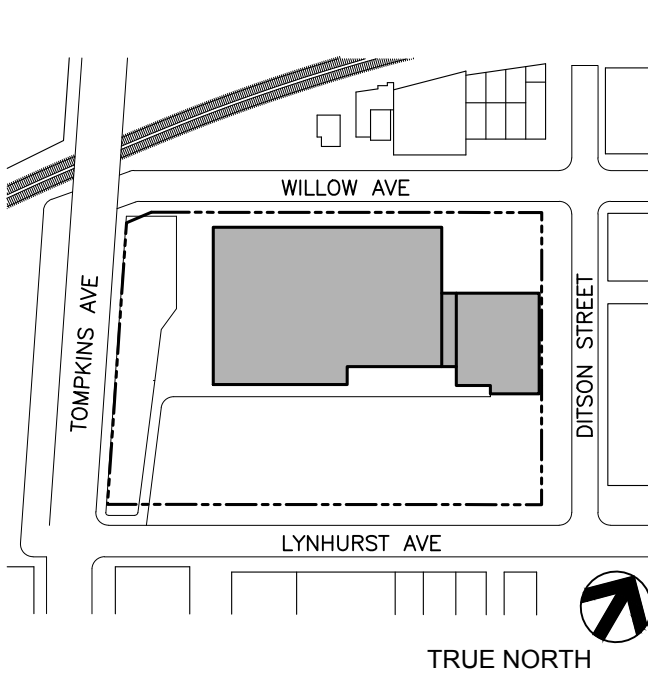
STRUCTURAL CONSULTANT:
YSRAEL A. SEINUK
28 EAST 45TH STREET, 2ND FLOOR
NEW YORK, NY, 1007

CIVIL ENGINEERING CONSULTANT:
YU & ASSOCIATES ENGINEERS, P.C.
5 PENN PLAZA, 23RD FLOOR
NEW YORK, NY, 1001

OWNER:

ONYX EQUITIES, LLC
900 ROUTE 9 NORTH, STE 400
WOODBRIDGE, NJ 07095
PH: 732-362-8800

KEY PLAN



TRUE NORTH

No. DRAWINGS/REVISIONS DATE

DEMOLITION

375 TOMPKINS AVENUE
STATEN ISLAND NY 10305

DOB SCAN

DOB USE

DRAWING TITLE

FIRST FLOOR PLAN 2-2
BASEMENT PLAN

SEAL & SIGNATURE

DATE: OCT 18 2019

PROJECT No: 1919

DRAWING BY: GK

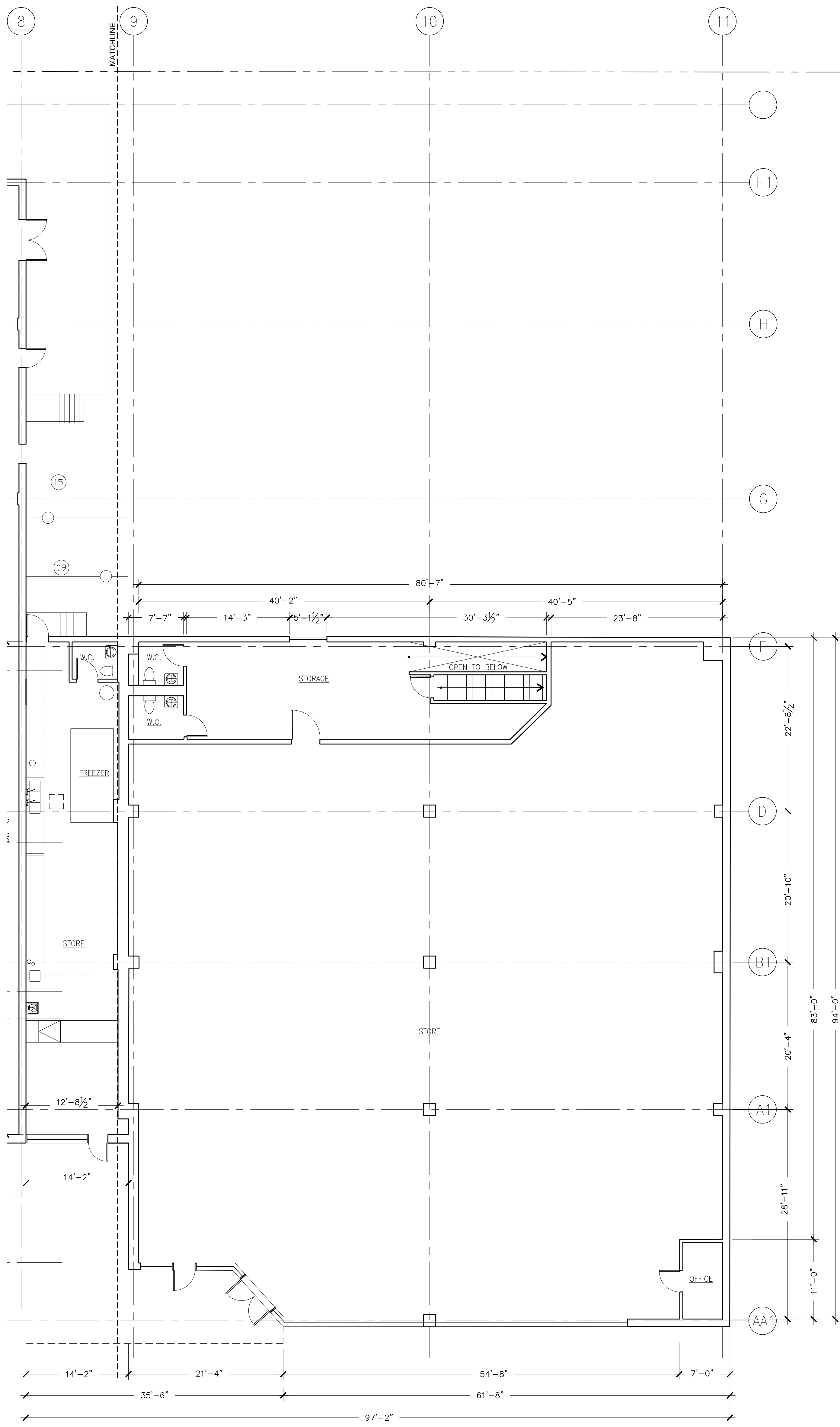
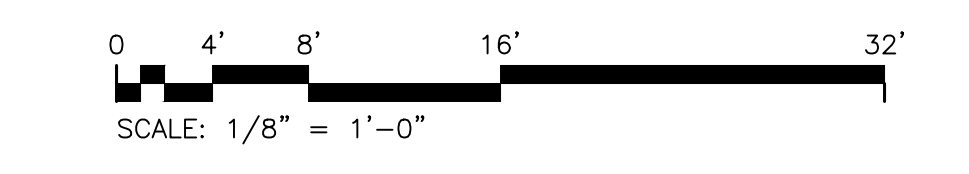
CHK BY: DK

DWG No: A102.00

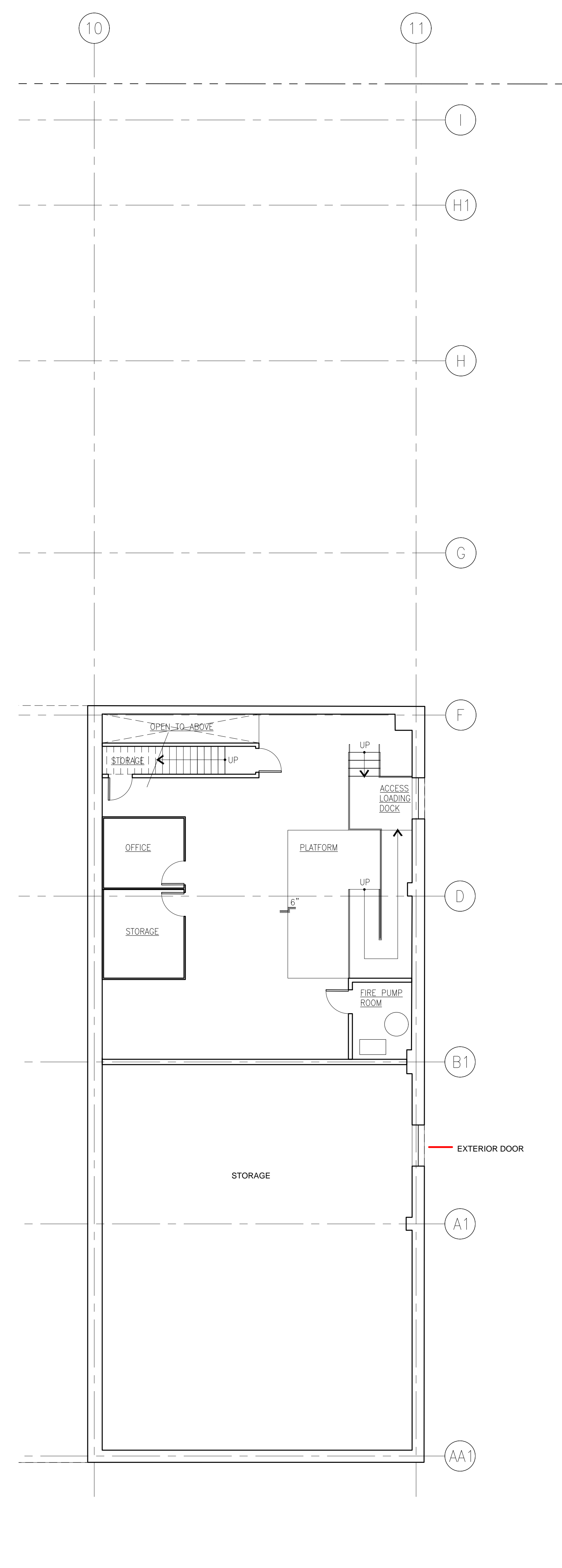
CAD FILE No: 06 of 17

LEGEND - DEMOLITION

- 01 REMOVE PERIMETER CHAIN LINK FENCING INCLUDING BENT POSTS AND TOP RAIL AT LYNHURST AVENUE
- 02 REMOVE ALL EXTERIOR SIGNAGE AT HIP ROOF STRUCTURE INCLUDING SIGNAGE SUPPORTS AND CONNECTIONS;
- 03 REMOVE EXTERIOR SIGNAGE INCLUDING MOUNTING "CURBS" AT FLAT ROOFED PORTION OF FACADE.
- 04 DEMOLISH AND REMOVE CORRUGATED METAL STORAGE STRUCTURES AT WEST SIDE OF BUILDING
- 05 REMOVE LOUVERS AND MISCELLANEOUS OPENINGS IN MASONRY WALLS
- 06 REMOVE ENTRY CANOPY AND LIGHTWEIGHT ENCLOSURE
- 07 REMOVE ALL ROOF-MOUNTED MECHANICAL EQUIPMENT AND ASSOCIATED ROOFTOP DUCTWORK UP TO AND INCLUDING PENETRATIONS
- 08 DEMOLISH EXISTING ROOF ACCESS HATCH.
- 09 REMOVE EXISTING DAMAGED BARRIER AT GAS RIG
- 10 REMOVE ALL CASEWORK AND STORE FIXTURES, INCLUDING ANCHORAGES AND GROUNDS - DO NOT DISTURB EXISTING FLOORING-
- 11 REMOVE WALK-IN COOLERS, CONCRETE PADS AND ASSOCIATED REFRIGERATION LINES
- 12 DEMOLISH AND REMOVE ALL INTERIOR FINISHES INCLUDING FINISHED FLOORING AND INTERIOR SIGNAGE
- 13 DEMOLISH AND REMOVE ALL COOKING AND FOOD PREP EQUIPMENT
- 14 DEMOLISH AND REMOVE ALL REFRIGERATED CASES
- 15 REMOVE TRASH COMPACTOR AND CONTAINER;
- 16 REMOVE CHAIN LINK FENCE AT TRANSFORMER AT NORTH SIDE OF BUILDING
- 17 REMOVE EXISTING RAILING AT THE LOADING DOCK
- 18 REMOVE CEILING TILES, LIGHTING AND SUPPORT SYSTEM -DO NOT DISTURB STEEL FIRE PROOFING-



1 FIRST FLOOR PLAN 2-2
1/8" = 1'-0"



2 BASEMENT PLAN
1/8" = 1'-0"