

TIMES SQUARE, NEW YORK, NY

1721 BROADWAY

BETWEEN W. 54TH AND W. 55TH STREET

MIDTOWN HIGH-TRAFFIC RETAIL FOR LEASE



THE DANA COMMERCIAL TEAM

EST. 1911
Douglas Elliman
REAL ESTATE

PROPERTY DETAILS

PREMISES

Ground Floor: 2,026 square feet
Basement: 800 square feet

FRONTAGE

25 Feet on Broadway

POSSESSION

Immediate

CEILING HEIGHT

9 Feet 6 Inches

TENANT

Previously Souvenir Store, Pharmacy before that

ASKING RENT

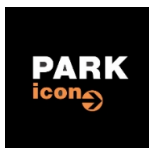
\$27,000 month



FEATURES

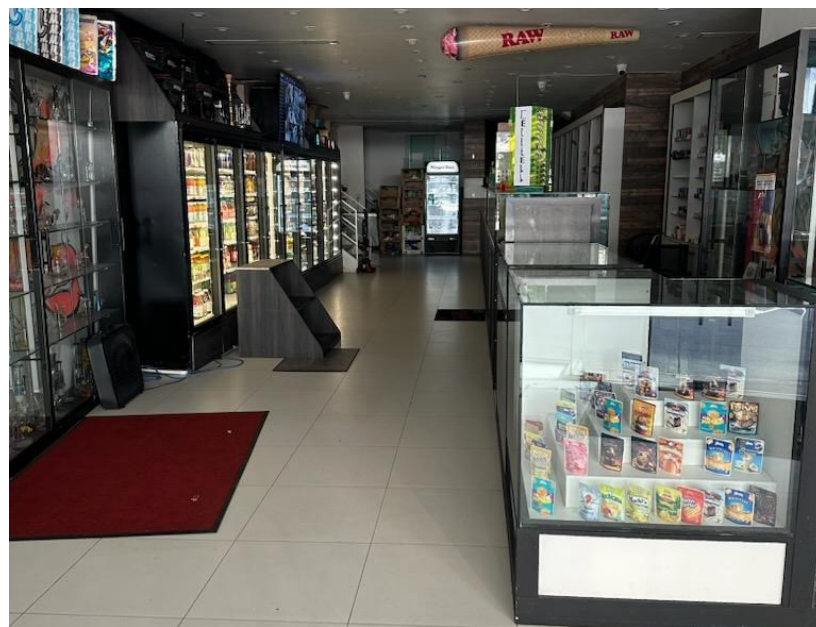
- Conveniently located steps from the Subway Lines, which sees 26 million riders annually.
- Only blocks from Central Park, Columbus Circle, and Times Square
- High Foot-Traffic! Near Broadway Shows!

NEARBY TENANTS INCLUDE



1721 BROADWAY

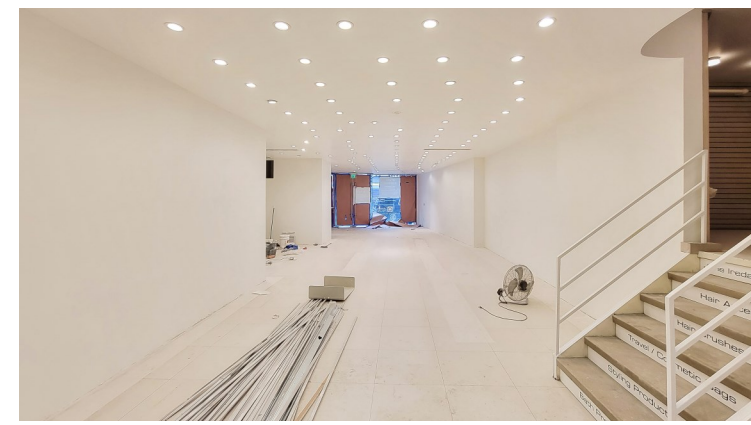
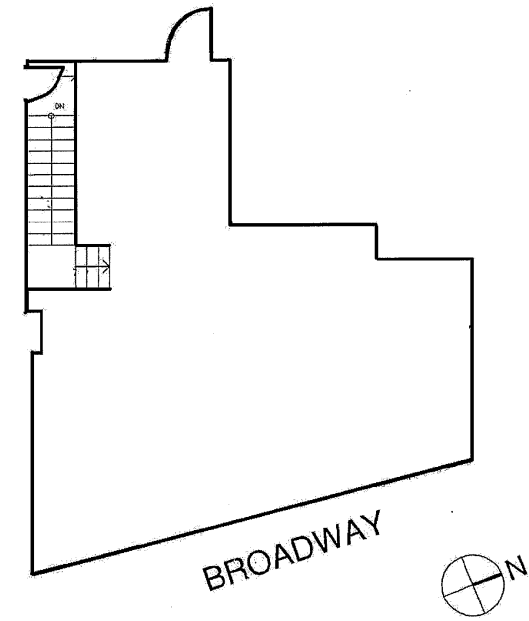
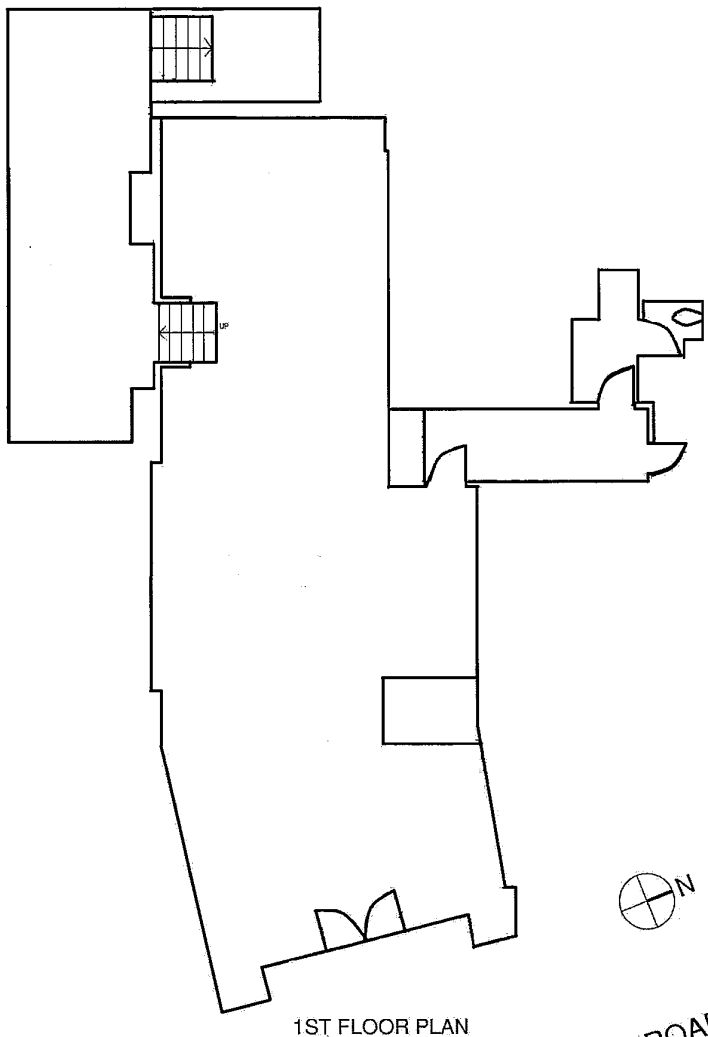
BETWEEN WEST 54TH STREET AND WEST 55TH STREET



FLOOR PLANS

1721 BROADWAY

BETWEEN WEST 54TH STREET AND WEST 55TH STREET



Exclusively Represented by:
THE DANA COMMERCIAL TEAM
AT DOUGLAS ELLIMAN REAL ESTATE

GARY DANA
516-946-7207
gdana@elliman.com

RICK DANA
917.952.0624
rdana@elliman.com

575 MADISON AVENUE, NY, NY 10022. 212.891.7000 © 2021 DOUGLAS ELLIMAN REAL ESTATE. ALL MATERIAL PRESENTED HEREIN IS INTENDED FOR INFORMATION PURPOSES ONLY. WHILE, THIS INFORMATION IS BELIEVED TO BE CORRECT, IT IS REPRESENTED SUBJECT TO ERRORS, OMISSIONS, CHANGES OR WITHDRAWAL WITHOUT NOTICE. ALL PROPERTY INFORMATION, INCLUDING, BUT NOT LIMITED TO SQUARE FOOTAGE, ROOM COUNT, NUMBER OF BEDROOMS AND THE SCHOOL DISTRICT IN PROPERTY LISTINGS SHOULD BE VERIFIED BY YOUR OWN ATTORNEY, ARCHITECT OR ZONING EXPERT. IF YOUR PROPERTY IS CURRENTLY LISTED WITH ANOTHER REAL ESTATE BROKER, PLEASE DISREGARD THIS OFFER. IT IS NOT OUR INTENTION TO SOLICIT THE OFFERINGS OF OTHER REAL ESTATE BROKERS. WE COOPERATE WITH THEM FULLY. EQUAL HOUSING OPPORTUNITY. 🏠

