



INNOVATION  
PROPERTIES  
GROUP

ipgsf.com

SUITE 102

1933 Davis St. San Leandro CA

11,443 SF

Ground level Industrial or Flex

GATE 510

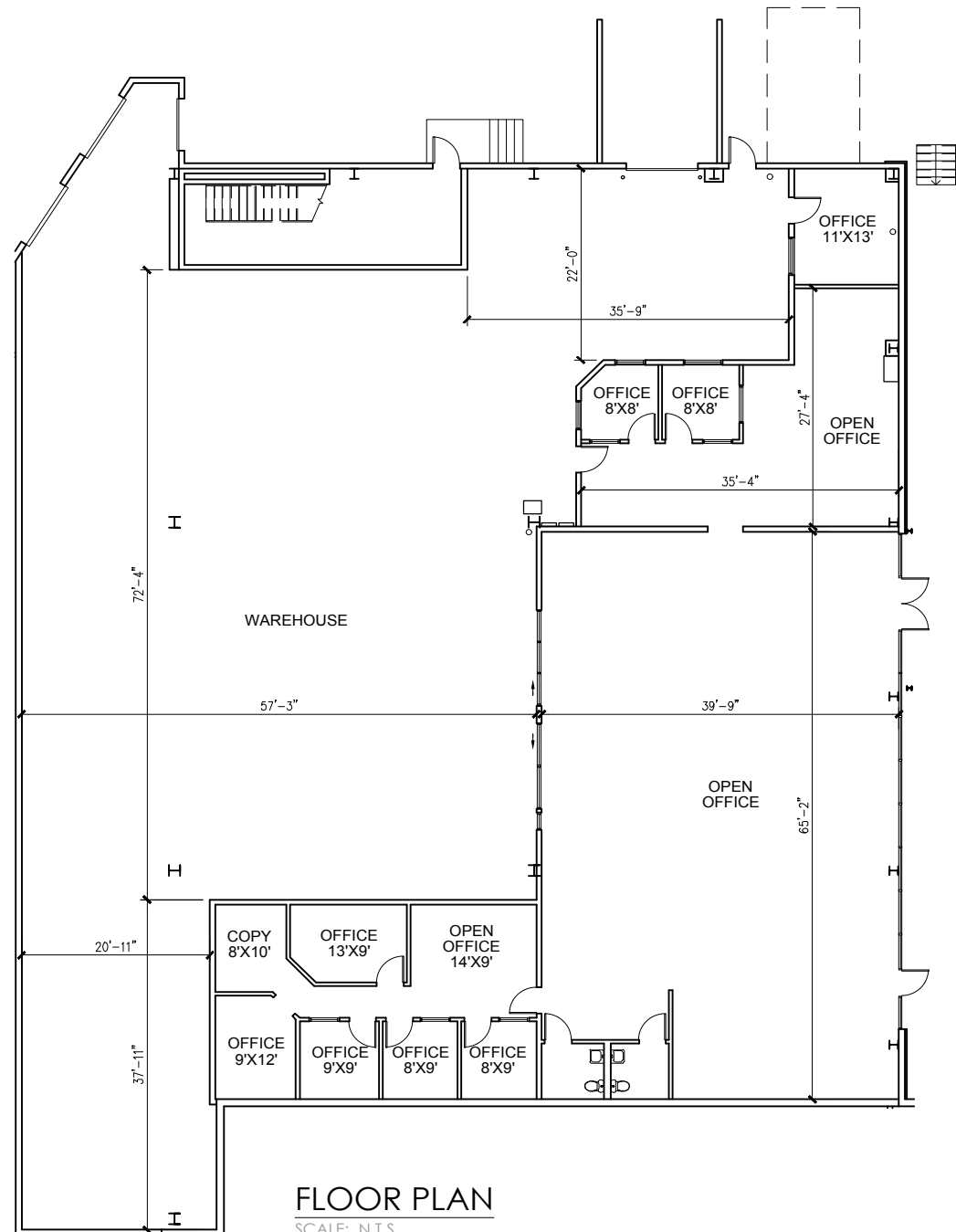
State Of The Art  
R&D Campus



Suite: 102  
SF: 11,443

## Space Features:

- Can be combined with suite 105 for a total of 34,154 SF
- Two (2) docks
- One (1) Drive in
- Eight (8) Private Offices
- Two (2) Conference Rooms / Open Area
- Two (2) Restrooms
- 200 amps @ 480v
- Science-Focused Campus Ideal For Climate Tech, Life Sciences, EV, Ag-Tech, Lab, Biotech, AI, Health Tech, Robotics, Cleantech, Chemistry, Medical Device, Food Science, Drone Tech, VR.
- Robust HVAC System Heavy Power
- Flexible Opportunity
- Landlord Will Build To Tenants Spec Requirements





# Many Commute Options



## For leasing information

**Innovation Properties Group**  
181 2nd Street, San Francisco, CA  
www.ipgsf.com | CL 02031924

**Rocky Kile | Director**  
(401) 263-4218 | rocky@ipgsf.com  
DRE: 02233435

**Taylor Stein | Senior Vice President**  
(415) 518-8550 | taylore@ipgsf.com  
DRE: 02059122

**Ivan Smiljanic | Partner**  
(510) 717-5008 | ivane@ipgsf.com  
DRE: 01995999

**Denis Dineen | Senior Associate**  
(650) 580-4383 | denise@ipgsf.com  
DRE: 02142178

ipgsf.com

This document has been prepared by IPG for advertising and general information only. IPG makes no guarantees, representations or warranties of any kind, expressed or implied, regarding the information including, but not limited to, warranties of content, accuracy and reliability. Any interested party should undertake their own inquiries as to the accuracy of the information. IPG excludes unequivocally all inferred or implied terms, condition and warranties arising out of this document and excludes all liability for loss and damages arising there from. This publication is the copyrighted property of IPG and/or its licensor(s). ©2025. All rights reserved.