

FOR LEASE

±0.53 Acre

Trucking | Container | Equipment
Yard

402 N Sullivan Street
Santa Ana, CA



Jack Haley, SIOR, CCIM

Principal | Lee & Associates

D: 714.564.7172

jhaley@lee-associates.com

DRE# 01064859

Greg Diab, CCIM

Principal | Lee & Associates

D: 714.564.7171

gdiab@lee-associates.com

DRE# 01098015

21,280 Sq. Ft Land for Lease

402 N Sullivan Street



PROPERTY HIGHLIGHTS

- Ideal Gated & Secured Contractor's Yard or Outdoor Storage Yard
- Excellent Ingress and Egress with Two Driveways
- ±1,100 Sq. Ft. House/Office Space with New Paint and Carpet and ±600 Sq. Ft. Detached Tool Storage/Garage
- M1 Zoning
- Yard Lighting & New Asphalt
- Convenient Access to the 22, 57 & 5 Freeways
- Vacant Now



Jack Haley, SIOR, CCIM
Principal | Lee & Associates
D: 714.564.7172
jhaley@lee-associates.com
DRE# 01064859

Greg Diab, CCIM
Principal | Lee & Associates
D: 714.564.7171
gdiab@lee-associates.com
DRE# 01098015

All information contained herein has been provided by Seller/Lessor and/or third parties, but has not been independently verified by Lee & Associates or its agent(s). Buyer/Lessee and interested parties should independently verify all information communicated by these sources.



Yard Lighting

±1,100 Sq. Ft. Office Building and Shop

Newer Asphalt Paving

±21,280 Sq. Ft. Land for Lease

EXCLUSIVE AGENTS



Jack Haley, SIOR, CCIM

Principal | Lee & Associates

D: 714.564.7172

jhaley@lee-associates.com

DRE# 01064859



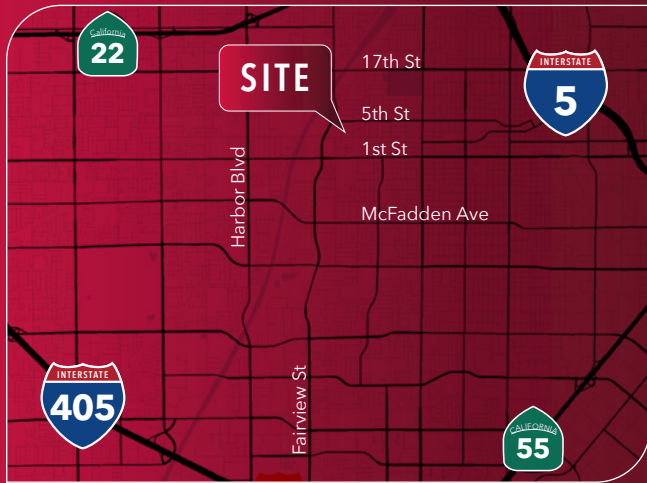
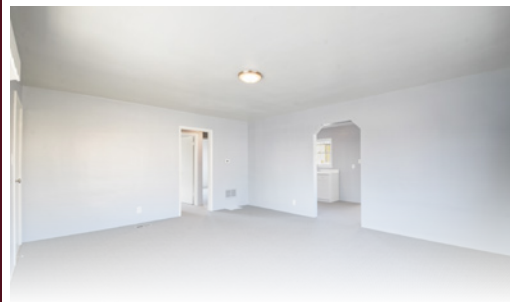
Greg Diab, CCIM

Principal | Lee & Associates

D: 714.564.7171

gdiab@lee-associates.com

DRE# 01098015



Lee & Associates Commercial Real Estate
Services, Inc. - Orange

1004 W. Taft Avenue, Suite 150,

Orange, CA 92865

LeeOrange.com | Corporate ID# 0101126

