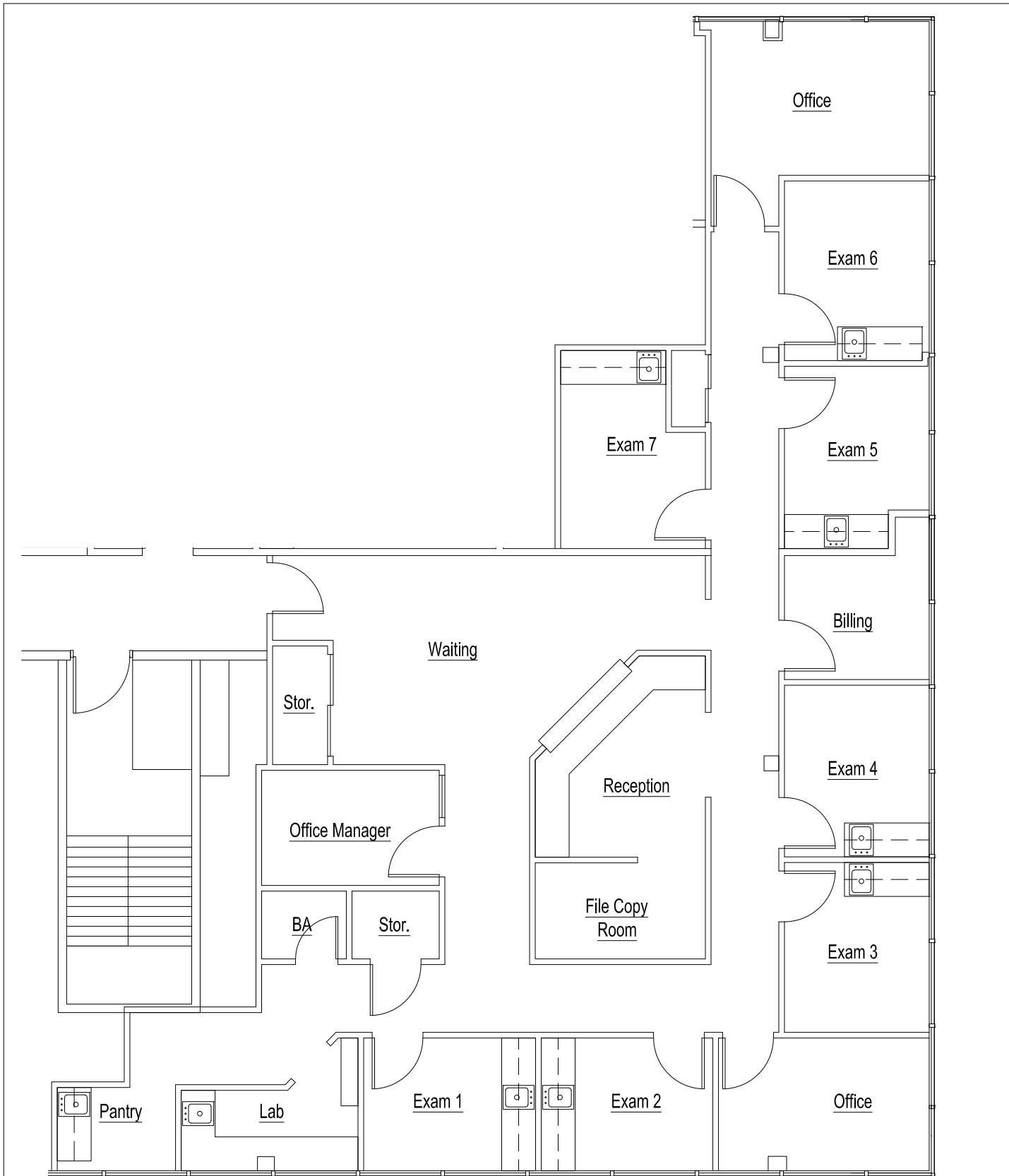


S:\PROJECTS\09\09-103 (1165 Northern Blvd)\09-103.01 (405 expansion-Dr Walczyk)\spaceplans\403-405 expansion 2025-04-10.dwg



TENANT NOTES:

- 1. FURNITURE IS SHOWN FOR SCALE PURPOSES ONLY. TENANT IS RESPONSIBLE FOR PROVIDING FINAL FURNITURE PLANS TO LANDLORD & ARCHITECT.
- 2. ADDITIONAL WORK SHOWN THAT IS NOT PART OF STANDARD LEASE WORK LETTER, PLUMBING, MILLWORK, GLASS, ETC. WILL BE AT THE EXPENSE OF THE TENANT UNLESS APPROVED BY LANDLORD

GENERAL NOTES:

THIS PLAN IS NOT TO BE USED FOR CONSTRUCTION PURPOSES. CRCD IS NOT RESPONSIBLE FOR ANY DISCREPANCIES IF USED FOR BUILDING.

COMBINED RESOURCES
CONSULTING AND DESIGN, INC.
155 FIRST STREET, SUITE 102
MINEOLA, NY 11501
P. 516.644.2828 F. 516.644.2820

PROJECT
**1165 Northern Blvd
Suite 405 Expansion
Great Neck, NY**

Please review the space plan and indicate any comments, corrections, changes, or additions directly on the plan. If the space plan shown meets with your approval, please sign below and fax this document back to our office, so that we can proceed with the construction drawings. Thank you.

APPROVED BY: _____ DATE: _____

DATE: 4/10/2025
SCALE: 1/8" = 1'-0"
DRAWN BY: JNM
PROJECT: 09-103

DRAWING No.
405