

Carlsbad Ranch Corporate Center

5800 Armada Drive
Carlsbad, CA 92008
www.cbre.com/sandiego

PROPERTY FEATURES

- + A 42,960 square foot three-story, Class "A" office bldg with a premium coastal Carlsbad Ranch location, overlooking Carlsbad Flower Fields situated on 50 acres of dedicated open space.
- + Located at the corner of Armada Drive and Fleet Street in the Carlsbad Ranch development with convenient I-5 access is provided via Cannon Road and Palomar Airport Road, less than a mile away.
- + Immediate access to the Carlsbad trail system and the Promenade Park overlooking the world-famous Flower Fields with 180-degree ocean views. Walking distance to Karl Strauss Brewery with close proximity to beaches, restaurants, services, hotels and quality retail establishments.
- + Carlsbad is the heart of the North County region and serves as the gateway between the Orange County and San Diego markets.
- + Granite and limestone facade with wood & stone lobby finishes.
- + High Bandwidth AT&T, Cox Communications, Time Warner & Charter/Spectrum Fiber Connectivity available.
- + A Development by DCM Properties, Inc.

PREMIUM CARLSBAD RANCH LOCATION | OCEAN VIEWS



Contact Us

Justin Halenza

First Vice President
+1 760 438 8514
justin.halenza@cbre.com
Lic. 01238120

Michael Mahoney

Senior Vice President
+1 760 685 2915
michael.mahoney3@cbre.com
Lic. 01392972

© 2026 CBRE, Inc. All rights reserved. This information has been obtained from sources believed reliable but has not been verified for accuracy or completeness. CBRE, Inc. makes no guarantee, representation or warranty and accepts no responsibility or liability as to the accuracy, completeness, or reliability of the information contained herein. You should conduct a careful, independent investigation of the property and verify all information. Any reliance on this information is solely at your own risk. CBRE and the CBRE logo are service marks of CBRE, Inc. All other marks displayed on this document are the property of their respective owners, and the use of such marks does not imply any affiliation with or endorsement of CBRE. Photos herein are the property of their respective owners. Use of these images without the express written consent of the owner is prohibited.

Availability

Floor	Suite #	RSF	Rate	Comments	Available
1 st	101	4,244 RSF	\$3.30/SF + E	Double door entry off ground floor lobby, reception area, large conference room, kitchen, copy/server room, 12 private offices and one workstation area.	7/1/26
1 st	105	1,849 RSF	\$3.30/SF + E	Double door entry off ground floor lobby, conference, 2 private offices, kitchen and open bullpen area.	Now
2 nd	235	2,684 RSF	\$3.30/SF + E	High-end finishes throughout, reception with double door entry off the second floor lobby, 3 private offices, conference room or executive office, open office area, kitchen, work room and server room.	Now
3 rd	310	3,913 RSF	\$3.30/SF + E	High-end finishes throughout, double door entry off lobby, multiple private offices, conference room or executive office and open office area.	7/1/26
3 rd	350	3,024 RSF	\$3.30/SF + E	Double door entry, conference, 8 private offices, kitchen, and open bullpen area.	Now
3 rd	310/350	6,937 RSF	\$3.30/SF + E	CONTIGUOUS OPTION See conceptual plan.	7/1/26



Suite 101 - 4,244 RSF

Class "A" Office

Double door entry off ground floor lobby, reception area, large conference room, kitchen, copy/server room, 12 private offices and one workstation area.



Not to Scale

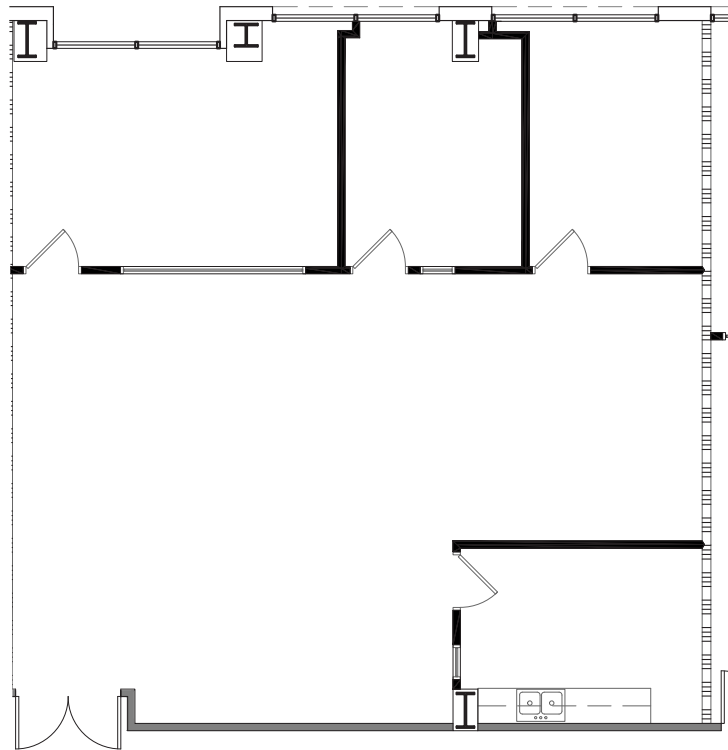
FIRST FLOOR



Suite 105 - 1,849 RSF

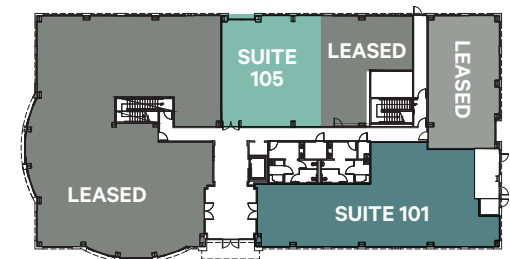
Class "A" Office

Double door entry off ground floor lobby, conference, 2 private offices, kitchen and open bullpen area.

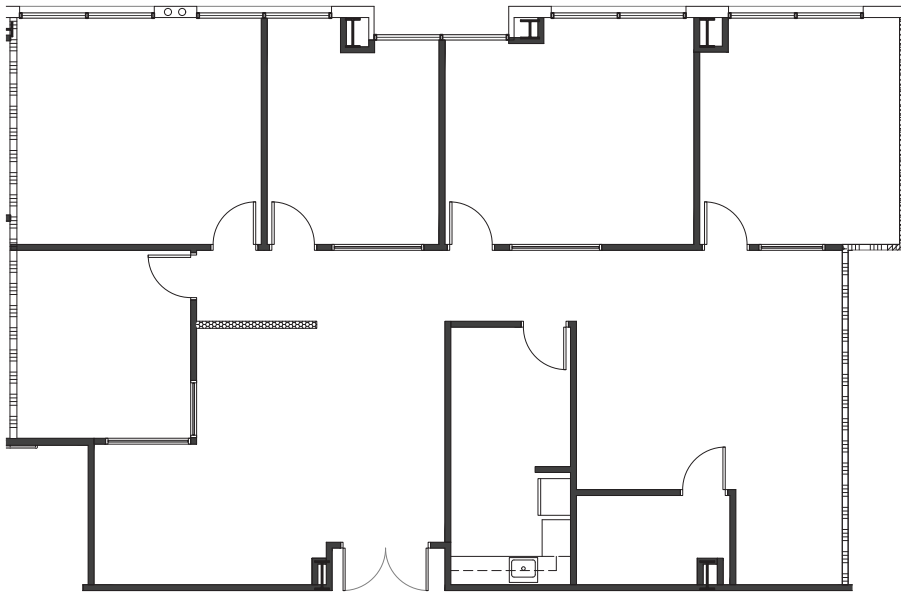


Not to Scale

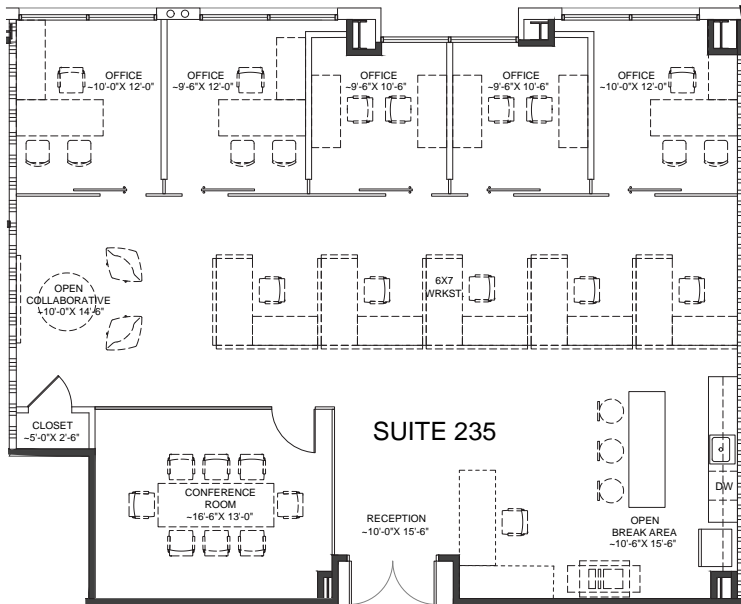
FIRST FLOOR



As-Built



Hypothetical Plan



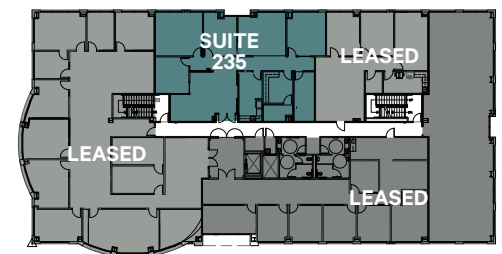
Not to Scale

Suite 235 - 2,684 RSF

Class "A" Office

High-end finishes throughout, reception with double door entry off the second floor lobby, 3 private offices, conference room or executive office, open office area, kitchen, work room and server room.

SECOND FLOOR

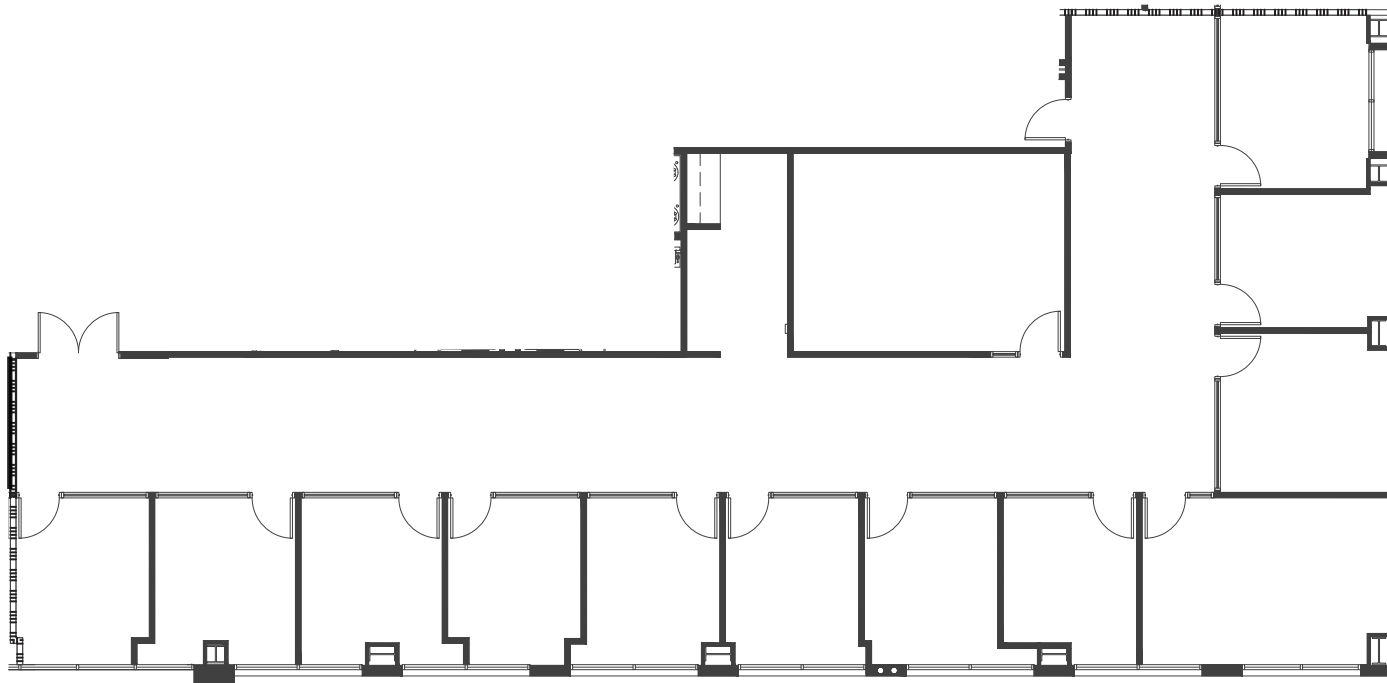


Suite 310 - 3,913 RSF

Expansive Top Floor Views

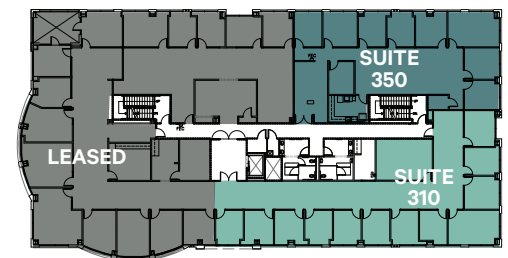
High-end finishes throughout, double door entry off lobby, multiple private offices, conference room or executive office and open office area.

Available 7/1/26.



Not to Scale

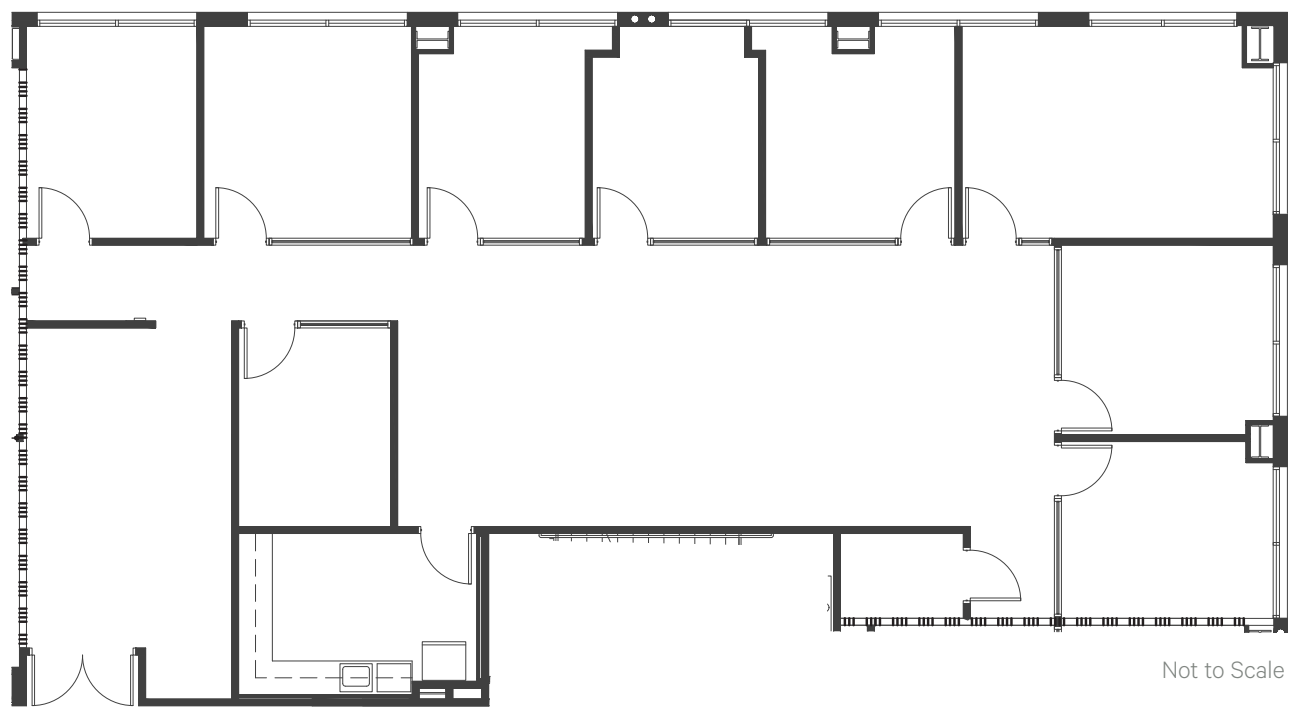
THIRD FLOOR



Suite 350 - 3,024 RSF

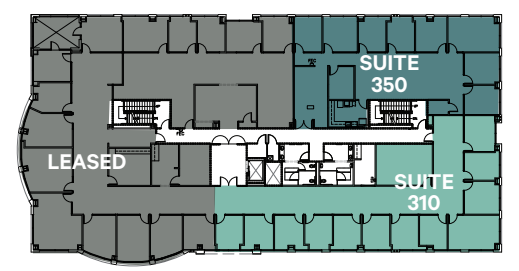
Class "A" Office

Double door entry, conference, 8 private offices,
kitchen and open bullpen area.



Not to Scale

THIRD FLOOR



Suite 310/350 - 6,937 RSF

Contiguous Option
Conceptual plan.



THIRD FLOOR



Carlsbad Ranch Corporate Center
5800 Armada Drive | Carlsbad, CA 92008

For Lease

Unparalleled Access to The Flower Fields

Carlsbad Ranch Corporate Center provides immediate access to the Carlsbad trail system and the Promenade Park overlooking the world-famous Flower Fields, with 180-degree ocean views. The 55-acres of Giant Tecolote Ranunculus flowers that make up The Flower Fields are in bloom for approximately six to eight weeks each year.

Explore the trail access here: [Armada Drive Trail](#)





CAR COUNTRY CARLSBAD
 25 franchise dealerships, including Alfa Romeo, Audi, Cadillac, Jaguar, Land Rover, Lexus, Mercedes-Benz, Porsche and more.

Kings Fish House, PF Changs, Corner Bakery, BJs Brewhouse

SIMON MALLS
 90 outlet stores
 10 restaurants

THE WINDMILL CARLSBAD
 14,000 SF
 11 food vendors
 Future Redevelopment: PASEO CARLSBAD
 Retail=101,690 SF

WESTIN
 HOTELS & RESORTS

SHERATON
 Carlsbad Resort & Spa

HILTON
 GRAND VACATIONS

LEGO CALIFORNIA

CARLSBAD RANCH CORPORATE CENTER

Grand Pacific Palisades
 A Carlsbad Resort

